

Beautiful 1.25+/- Acre House Lot Oktober County, MS



\$27,500

Directions: From the intersection of Highway 25 and Highway 12, turn right onto Old Highway 12. Travel 2 miles, then turn left onto Densbrook Lane. Travel 1/8 of a mile and the destination will be on the right.



Call me today!

MICHAEL COOPER, REALTOR®
Mcooper@TomSmithLand.com
662.268.6333 **office** | 662.285.8686 **cell**



TomSmithLandandHomes.com

Information is believed to be accurate but not guaranteed.

This 1.25+/- acre lot is a beautiful homesite in Oktibbeha County with a well maintained road system. Located in the peaceful Densbrook subdivision, this lot offers scattered mature hardwoods and underground power for an unobstructed view. The homesite is just minutes from town but gives a quiet country feel. Better hurry, This one won't last long! Call Michael for a private showing.



Call me today!

MICHAEL COOPER, REALTOR®
Mcooper@TomSmithLand.com
662.268.6333 **office** | 662.285.8686 **cell**

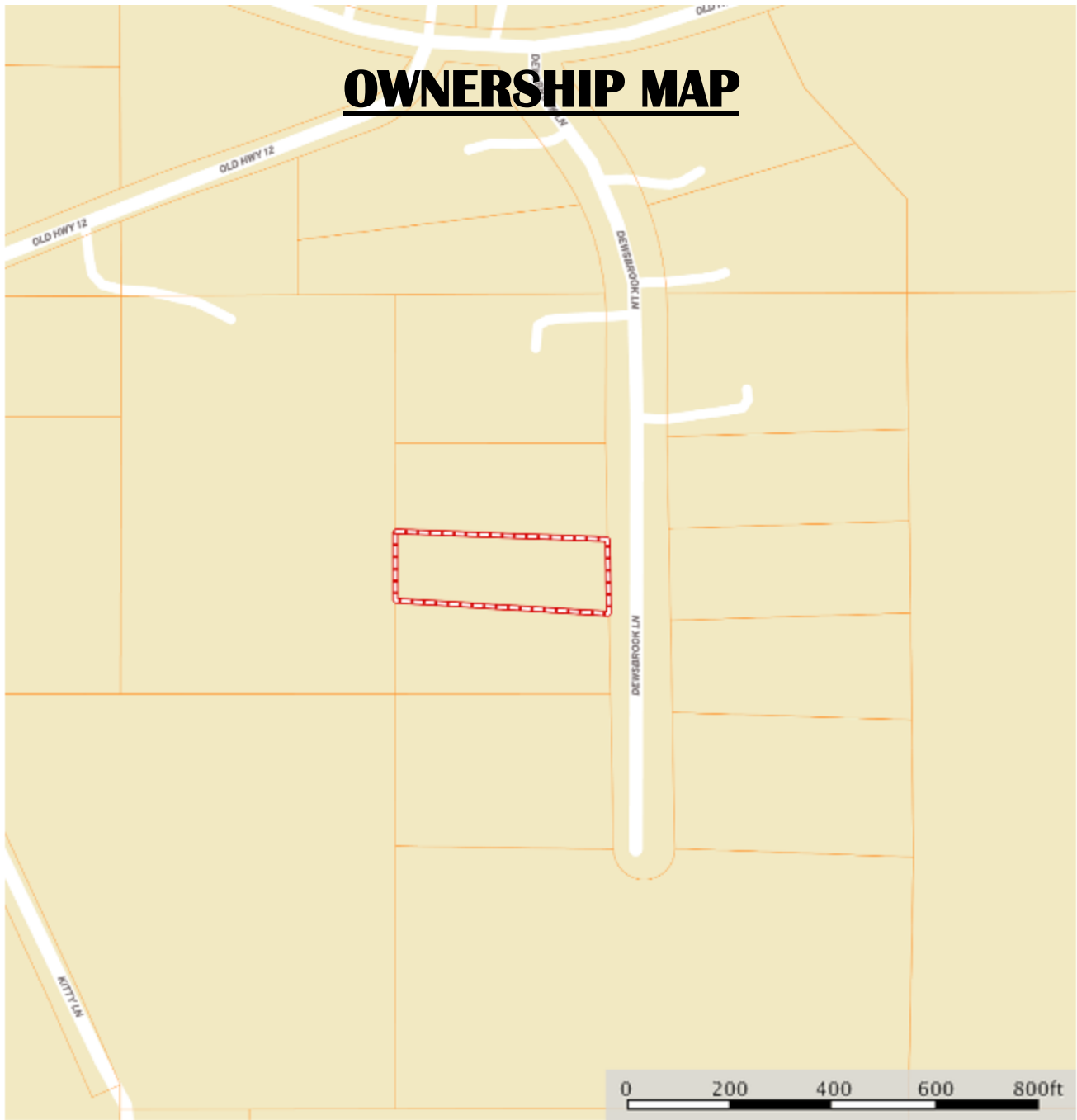


Expect More. Get More.

TomSmithLandandHomes.com

Information is believed to be accurate but not guaranteed.

OWNERSHIP MAP



□ Boundary □ Boundary



Call me today!

MICHAEL COOPER, REALTOR®
Mcooper@TomSmithLand.com
662.268.6333 **office** | 662.285.8686 **cell**



TomSmithLandandHomes.com

Information is believed to be accurate but not guaranteed.



Call me today!

MICHAEL COOPER, REALTOR®
Mcooper@TomSmithLand.com
662.268.6333 **office** | 662.285.8686 **cell**



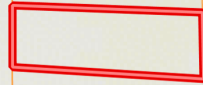
Expect More. Get More.

TomSmithLandandHomes.com

Information is believed to be accurate but not guaranteed.

TOPO MAP

291



Call me today!

MICHAEL COOPER, REALTOR®
Mcooper@TomSmithLand.com
662.268.6333 **office** | 662.285.8686 **cell**



Expect More. Get More.

TomSmithLandandHomes.com

Information is believed to be accurate but not guaranteed.



SOIL CODE	SOIL DESCRIPTION	ACRES	%	CAP
Mu	Mathiston silt loam	1.9	100.0	2w
TOTALS		1.9	100%	2.0



Call me today!

MICHAEL COOPER, REALTOR®
 Mcooper@TomSmithLand.com
 662.268.6333 office | 662.285.8686 cell



TomSmithLandandHomes.com

Information is believed to be accurate but not guaranteed.



Directions: From the intersection of Highway 25 and Highway 12, turn right onto Old Highway 12. Travel 2 miles, then turn left onto Densbrook Lane. Travel 1/8 of a mile and the destination will be on the right.



Call me today!

MICHAEL COOPER, REALTOR®
 Mcooper@TomSmithLand.com
 662.268.6333 **office** | 662.285.8686 **cell**



TomSmithLandandHomes.com

Information is believed to be accurate but not guaranteed.