

Investment and Hunting Property! 79 +/- Acres in Scott County, Mississippi



\$162,075

Check out this great investment tract!! This 79 +/- acre property in Scott County, MS offers great hunting, paved road frontage, available utilities, a creek, and more! The hardwoods were cut in 2018, leaving some scattered pines. Branch Creek and Coffee Bogue traverse this property and offers potential to develop a duck hole. Don't miss out; this property is priced right!!!

Directions From Morton: Travel North on MS-13 for approximately 5.6 miles. Turn left onto MS--483 and go .7 miles. Turn left onto McCurdy Road and in 1.2 miles, the property will be on the left.



call me today!

BILL PATRICK, REALTOR®

Bill@TomSmithLand.com

601.898.2772 office | 601.573.0749 cell

601 Crescent Blvd., Suite 103 Ridgeland, MS 39157



Expect More. Get More.



TomSmithLandandHomes.com



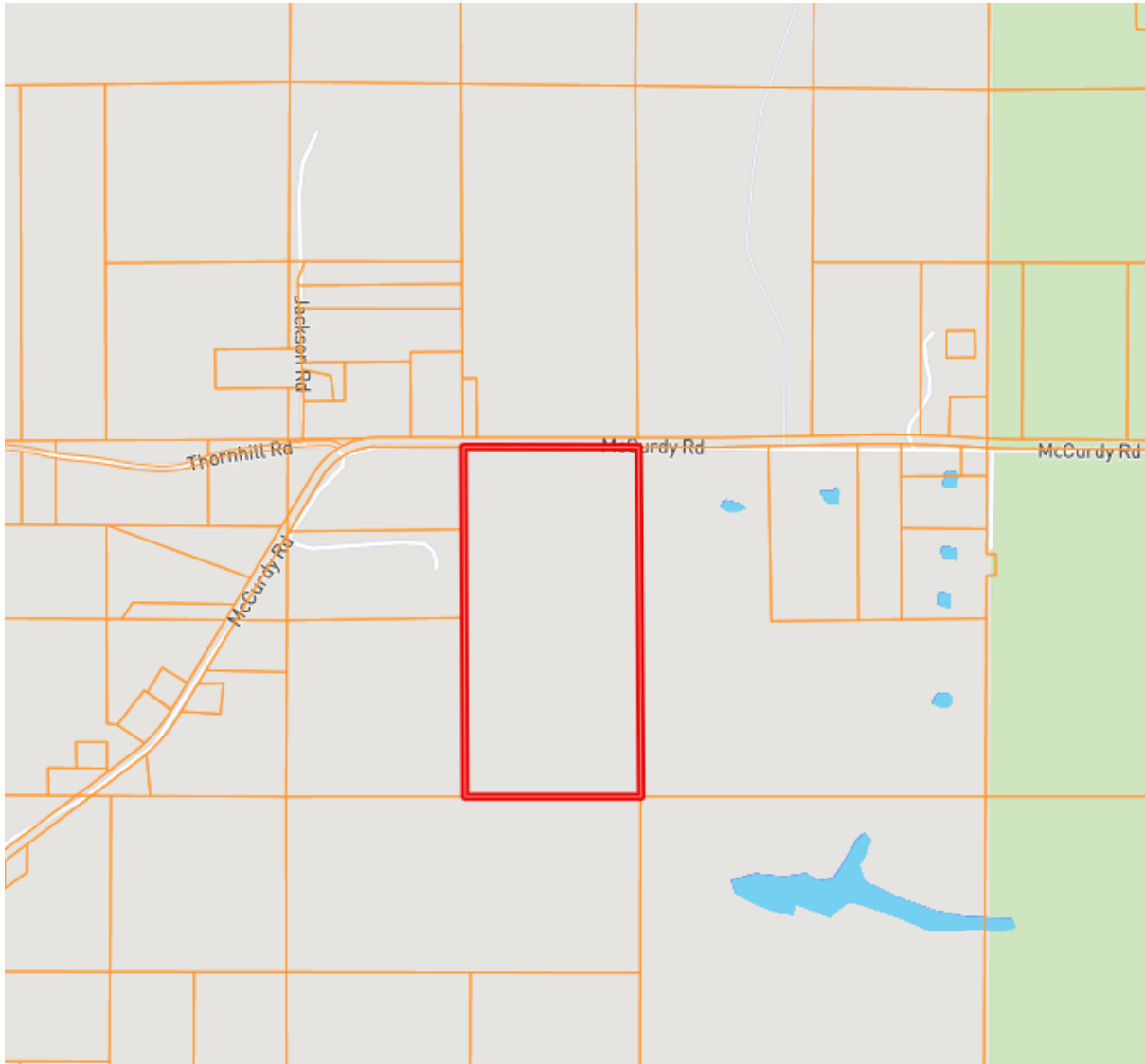
BILL PATRICK, REALTOR®
Bill@TomSmithLand.com
601.898.2772 **office** | 601.573.0749 **cell**
601 Crescent Blvd., Suite 103 Ridgeland, MS 39157



Expect More. Get More.

TomSmithLandandHomes.com

Information is believed to be accurate but not guaranteed.



BILL PATRICK, REALTOR®

Bill@TomSmithLand.com

601.898.2772 **office** | 601.573.0749 **cell**

601 Crescent Blvd., Suite 103 Ridgeland, MS 39157



TomSmithLandandHomes.com



Aerial Map

BILL PATRICK, REALTOR®

Bill@TomSmithLand.com

601.898.2772 office | 601.573.0749 cell

601 Crescent Blvd., Suite 103 Ridgeland, MS 39157



Expect More. Get More.



TomSmithLandandHomes.com



SOIL CODE	SOIL DESCRIPTION	ACRES	%	CAP
Ad	Adaton silt loam, 0 to 1 percent slopes	19.5	24.06	3w
St	Stough fine sandy loam, 0 to 2 percent slopes	12.6	15.6	2w
QuA	Quitman loam, 0 to 2 percent slopes	2.4	3.01	2w
Rk	Rosebloom and Arkabutla soils, frequently flooded	46.4	57.33	5w
TOTALS		80.9	100%	3.96

Soil Map

BILL PATRICK, REALTOR®

Bill@TomSmithLand.com

601.898.2772 office | 601.573.0749 cell

601 Crescent Blvd., Suite 103 Ridgeland, MS 39157



Expect More. Get More.



TomSmithLandandHomes.com

Information is believed to be accurate but not guaranteed.

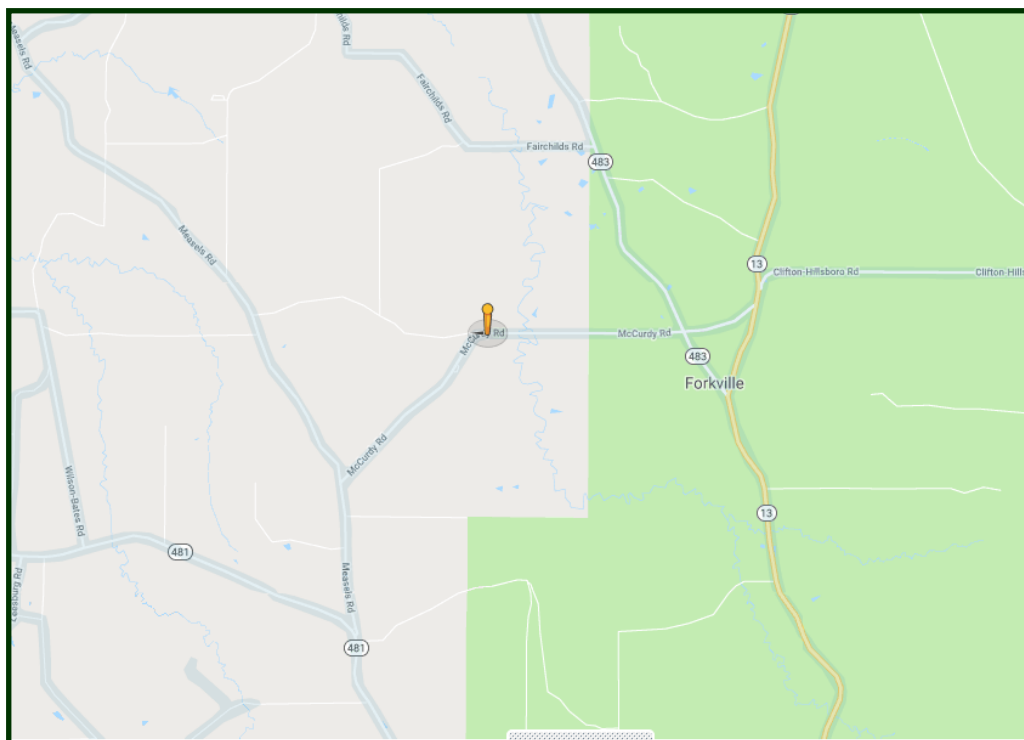


Bill@TomSmithLand.com

601 Crescent Blvd., Suite 103 Ridgeland, MS 39157



Information is believed to be accurate but not guaranteed.



Directional Map

Directions From Morton: Travel North on MS-13 for approximately 5.6 miles. Turn left onto MS--483 and go .7 miles. Turn left onto McCurdy Road and in 1.2 miles, the property will be on the left.

BILL PATRICK, REALTOR®

Bill@TomSmithLand.com

601.898.2772 office | 601.573.0749 cell

601 Crescent Blvd., Suite 103 Ridgeland, MS 39157



Expect More. Get More.



TomSmithLandandHomes.com

Information is believed to be accurate but not guaranteed.