

GREEN ACRES

355± ACRES IN JASPER COUNTY, MS



4908 COUNTY ROAD 8
VOSSBURG, MS 39366

\$799,000

This really is the place to be! Until his recent passing, This Jasper County, MS property was owned by "Eb," one of the stars of Green Acres, played by Laurel's own Tom Lester. The property consists of 355± acres of merchantable pine timber, hardwood timber, several food plots, and an excellent established road system. It features a 1,600 SF 2BR, 2 BA cabin complete with a wood-burning fireplace, large family room, spacious kitchen, and your very own screened-in porch. There is also a 20X50 five-bay equipment storage building that contains a 20'X20' Bunkhouse! There are two stocked ponds for your fishing pleasure, and the compound is entirely secluded. When it comes to deer hunting, Jasper Co. MS, is a sleeper. All you have to do is look up the harvest in Magnolia Records to see the quality of animals available for harvest in Jasper Co. The property is a special place with unlimited potential for you and your family, as it is an outstanding recreational property. Call Tom today for your private showing!

Directions from I-59, Exit 118 at Vossburg, MS: Travel southeast on Jasper County Road 35 for 1.9 miles. Road name changes to CR 39. Continue on County Road 39 for 1.3 miles. Turn left on County Road 8; proceed 1 mile. The gated entrance will be on the right.



Call The Land Man today!

TOM SMITH, ALC, BROKER®
Tom@TomSmithLand.com
601.898.2772 office | 601.454.9397 cell



TomSmithLand.com

Information is believed to be accurate but not guaranteed.

CAMPHOUSE



COMPLETE WITH ITS OWN 1,600 S.F. 2-BEDROOM 2 BATH CABIN WITH A CUSTOM STONE, WOOD-BURNING FIREPLACE AND ALL THE ROOM THE FAMILY OR HUNTERS NEED, THIS SINGLE-STORY CAMP HOUSE OVERLOOKS TWO PONDS STOCKED WITH BASS AND BREAM AND SITS ADJACENT TO A 20' X 50', FIVE-BAY EQUIPMENT SHED AND 20' X 20' BUNKHOUSE.



TOM SMITH, ALC, BROKER®
Tom@TomSmithLand.com
601.898.2772 office | 601.454.9397 cell



TomSmithLand.com

Information is believed to be accurate but not guaranteed.



TOM SMITH, ALC, BROKER®
Tom@TomSmithLand.com
601.898.2772 office | 601.454.9397 cell



TomSmithLand.com

Information is believed to be accurate but not guaranteed.



TOM SMITH, ALC, BROKER®

Tom@TomSmithLand.com

601.898.2772 office | 601.454.9397 cell

Expect More. Get More.



TomSmithLand.com

Information is believed to be accurate but not guaranteed.



TOM SMITH, ALC, BROKER®
Tom@TomSmithLand.com
601.898.2772 office | 601.454.9397 cell



TomSmithLand.com

Information is believed to be accurate but not guaranteed.



TOM SMITH, ALC, BROKER®
 Tom@TomSmithLand.com
 601.898.2772 office | 601.454.9397 cell



TomSmithLand.com

Information is believed to be accurate but not guaranteed.



TOM SMITH, ALC, BROKER®
Tom@TomSmithLand.com
601.898.2772 office | 601.454.9397 cell



TomSmithLand.com

Information is believed to be accurate but not guaranteed.

AERIAL MAP



[CLICK HERE FOR AN INTERACTIVE MAP](#)



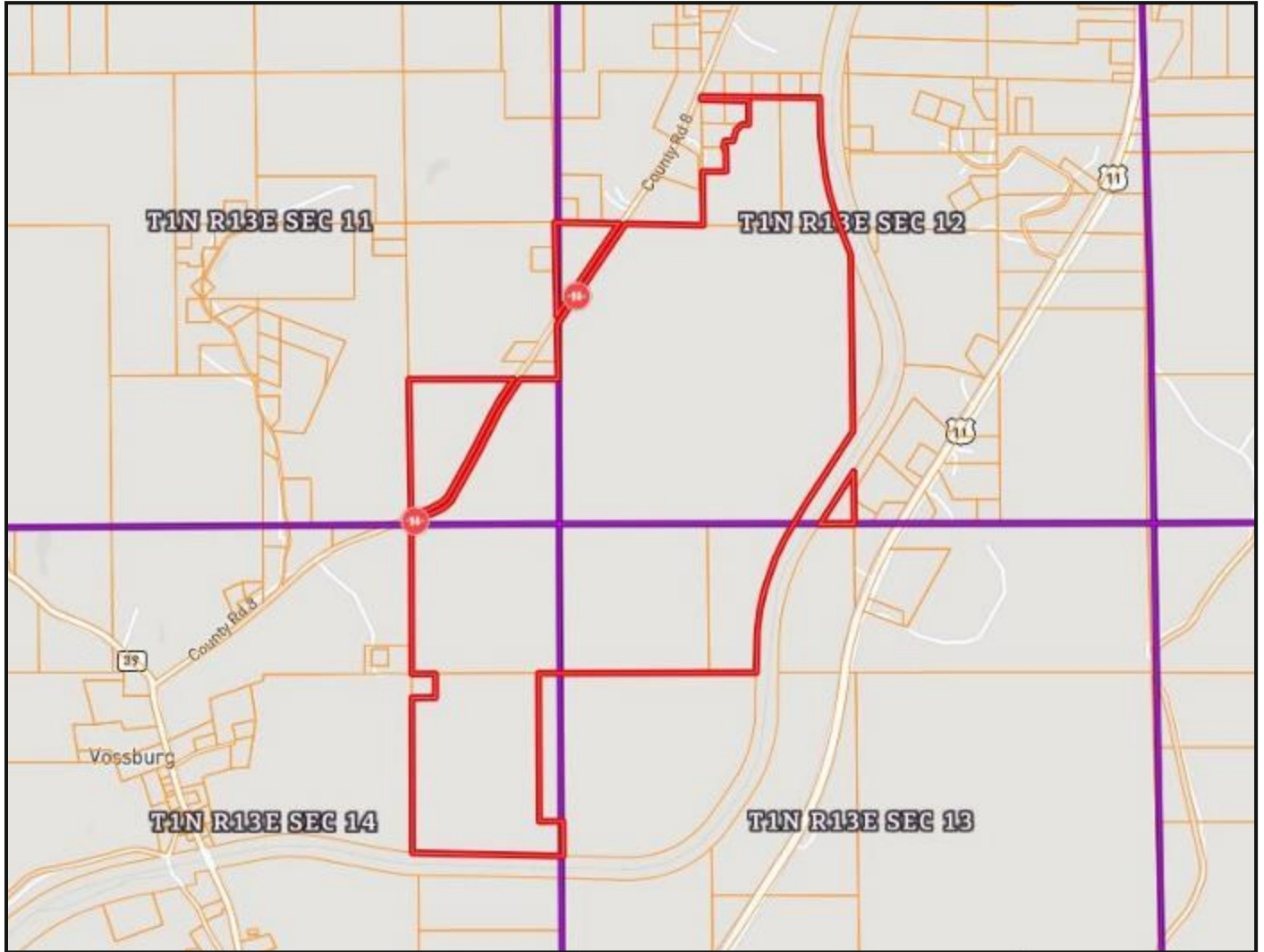
TOM SMITH, ALC, BROKER®
Tom@TomSmithLand.com
601.898.2772 **office** | 601.454.9397 **cell**



TomSmithLand.com

Information is believed to be accurate but not guaranteed.

OWNERSHIP MAP



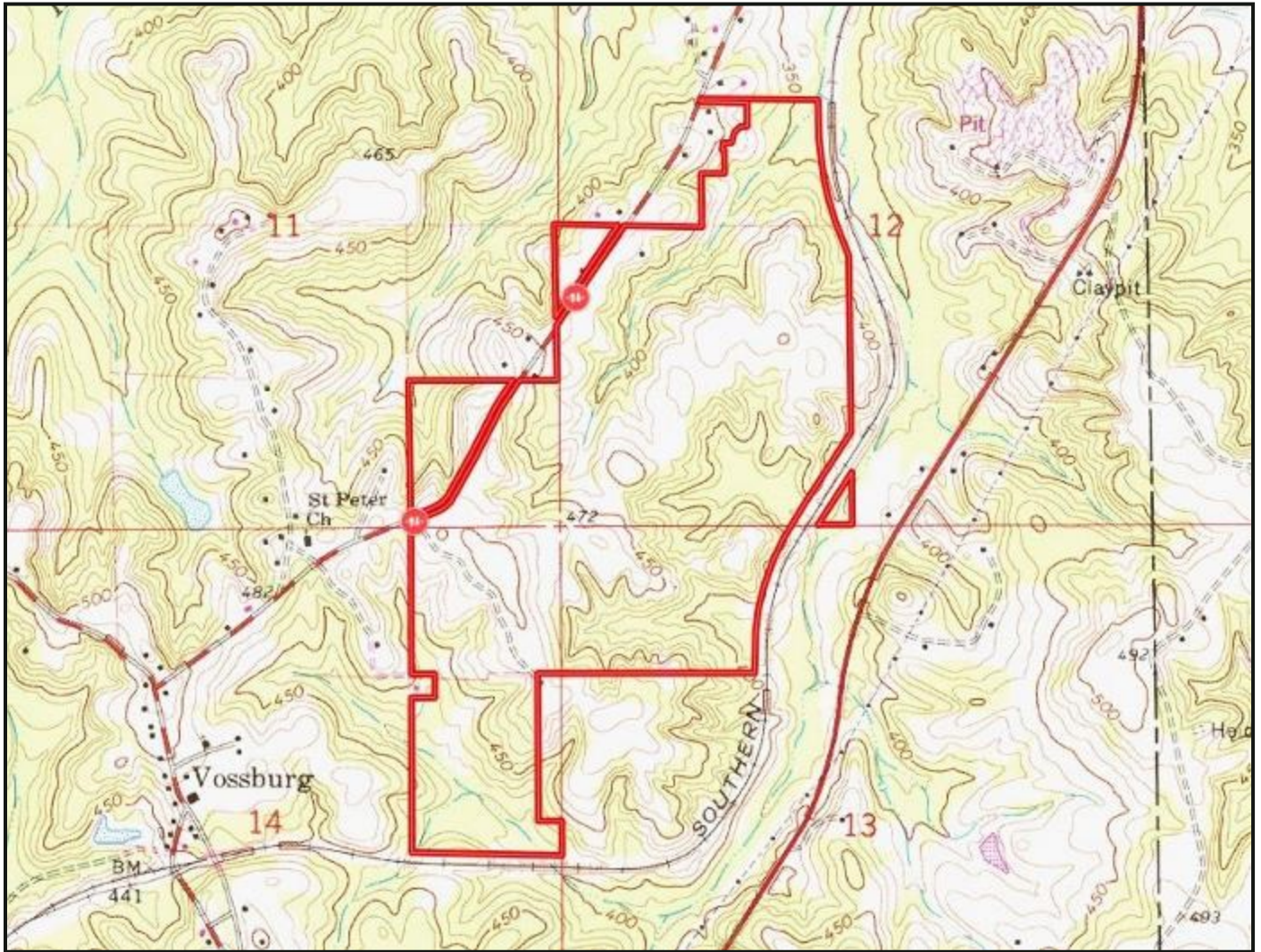
TOM SMITH, ALC, BROKER®
Tom@TomSmithLand.com
601.898.2772 office | 601.454.9397 cell



TomSmithLand.com

Information is believed to be accurate but not guaranteed.

TOPO MAP



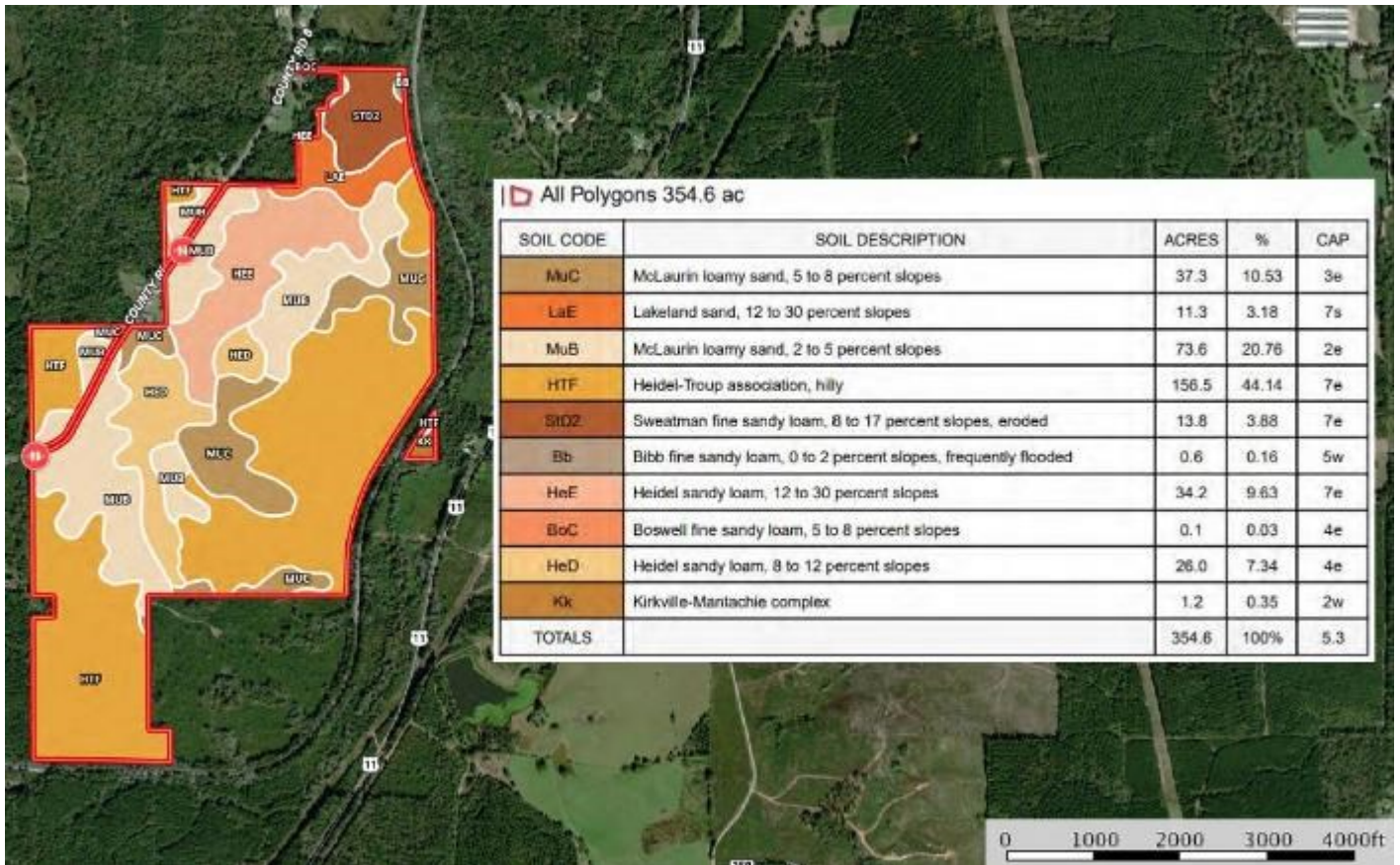
TOM SMITH, ALC, BROKER®
Tom@TomSmithLand.com
601.898.2772 office | 601.454.9397 cell



TomSmithLand.com

Information is believed to be accurate but not guaranteed.

SOIL MAP



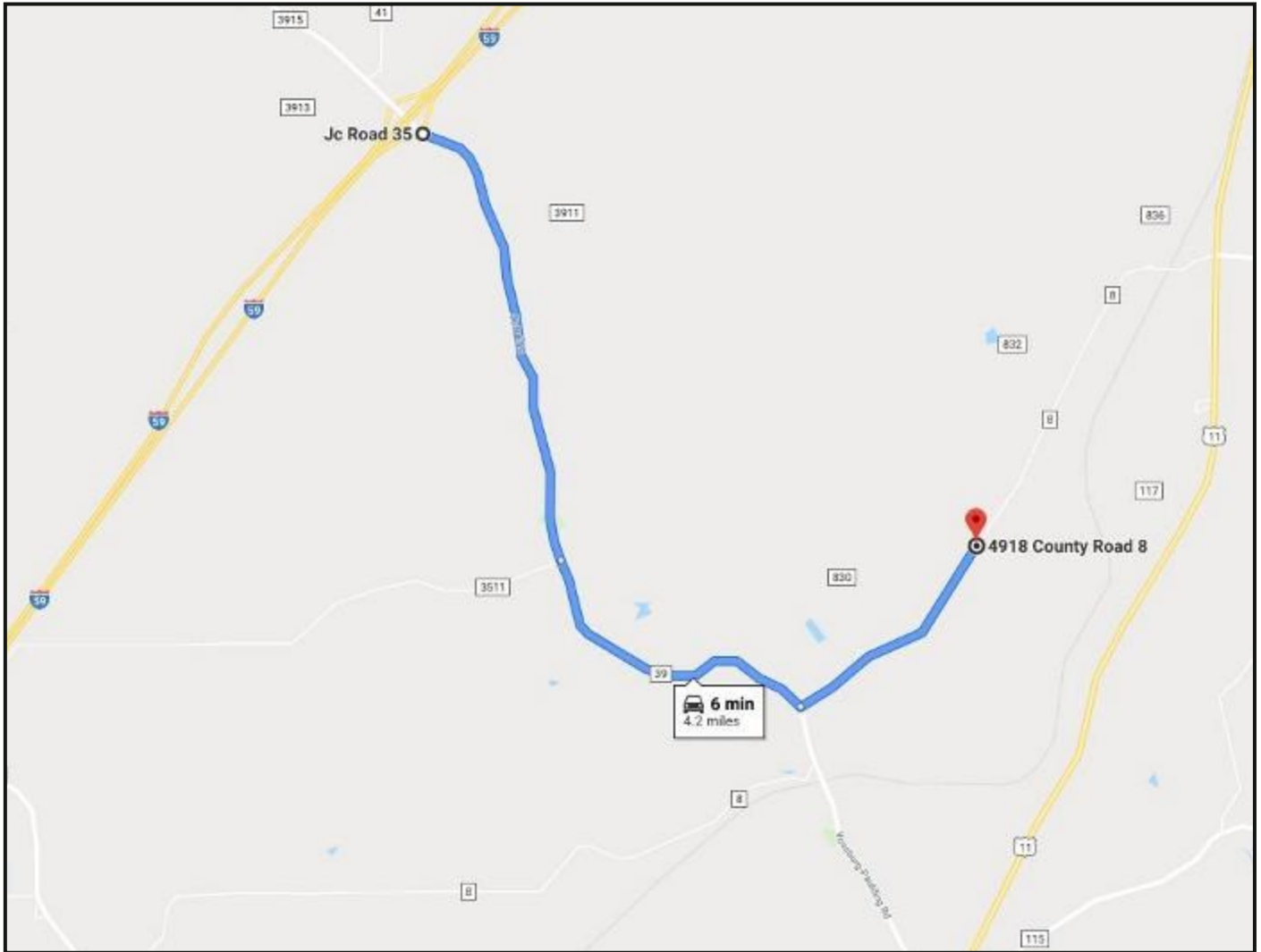
TOM SMITH, ALC, BROKER®
 Tom@TomSmithLand.com
 601.898.2772 office | 601.454.9397 cell



TomSmithLand.com

Information is believed to be accurate but not guaranteed.

DIRECTIONAL MAP



Directions from I-59, Exit 118 at Vossburg, MS: Travel southeast on Jasper County Road 35 for 1.9 miles. Road name changes to CR 39. Continue on County Road 39 for 1.3 miles. Turn left on County Road 8; proceed 1 mile. The gated entrance will be on the right.

[GOOGLE MAP LINK](#)



Call The Land Man today!

TOM SMITH, ALC, BROKER®

Tom@TomSmithLand.com

601.898.2772 office | 601.454.9397 cell



TomSmithLand.com

Information is believed to be accurate but not guaranteed.