

RECREATIONAL HUNTING PARADISE

355± ACRES IN JASPER COUNTY, MS



4908 COUNTY ROAD 8
VOSSBURG, MS 39366

\$750,000

This Jasper County, MS property comprises 355± acres of merchantable pine timber, hardwood timber, several food plots, and an excellent established road system. It features a 1,600 SF, two bedroom, two bath cabin complete with a wood-burning fireplace, a large family room, a spacious kitchen, and your own screened-in porch. A 20X50 five-bay equipment storage building also contains a 20'X20' bunkhouse! There are two stocked ponds for your fishing pleasure, and the compound is entirely secluded. When it comes to deer hunting, Jasper County, MS, is a sleeper. All you have to do is look up the harvest in Magnolia Records to see the quality of animals available for harvest in Jasper County. The property is a special place with unlimited potential for you and your family, as it is an outstanding recreational property. Call Tom today for your private showing!



*Call the
land man
today!*

TOM SMITH, ALC®, BROKER
Tom@TomSmithLand.com
601.898.2772 **office** | 601.454.9397 **cell**



TomSmithLandandHomes.com

Information is believed to be accurate but not guaranteed.

CAMPHOUSE



COMPLETE WITH ITS OWN 1,600 S.F. 2-BEDROOM 2 BATH CABIN WITH A CUSTOM STONE, WOOD-BURNING FIREPLACE AND ALL THE ROOM THE FAMILY OR HUNTERS NEED, THIS SINGLE-STORY CAMP HOUSE OVERLOOKS TWO PONDS STOCKED WITH BASS AND BREAM AND SITS ADJACENT TO A 20' X 50', FIVE-BAY EQUIPMENT SHED AND 20' X 20' BUNKHOUSE.



Call the land man today!

TOM SMITH, ALC®, BROKER

Tom@TomSmithLand.com

601.898.2772 **office** | 601.454.9397 **cell**



Expect More. Get More.



TomSmithLandandHomes.com

Information is believed to be accurate but not guaranteed.



*Call the
land man
today!*

TOM SMITH, ALC®, BROKER

Tom@TomSmithLand.com

601.898.2772 **office** | 601.454.9397 **cell**



Expect More. Get More.



TomSmithLandandHomes.com

Information is believed to be accurate but not guaranteed.



TOM SMITH, ALC®, BROKER
 Tom@TomSmithLand.com
 601.898.2772 **office** | 601.454.9397 **cell**



Expect More. Get More.

TomSmithLandandHomes.com

Information is believed to be accurate but not guaranteed.



*Call the
land man
today!*

TOM SMITH, ALC®, BROKER

Tom@TomSmithLand.com

601.898.2772 **office** | 601.454.9397 **cell**



Expect More. Get More.



TomSmithLandandHomes.com

Information is believed to be accurate but not guaranteed.



*Call the
land man
today!*

**Tom
Smith
LAND AND
HOMES**

Expect More. Get More.



TOM SMITH, ALC®, BROKER
 Tom@TomSmithLand.com
 601.898.2772 **office** | 601.454.9397 **cell**

TomSmithLandandHomes.com

Information is believed to be accurate but not guaranteed.



*Call the
land man
today!*

TOM SMITH, ALC®, BROKER

Tom@TomSmithLand.com

601.898.2772 **office** | 601.454.9397 **cell**



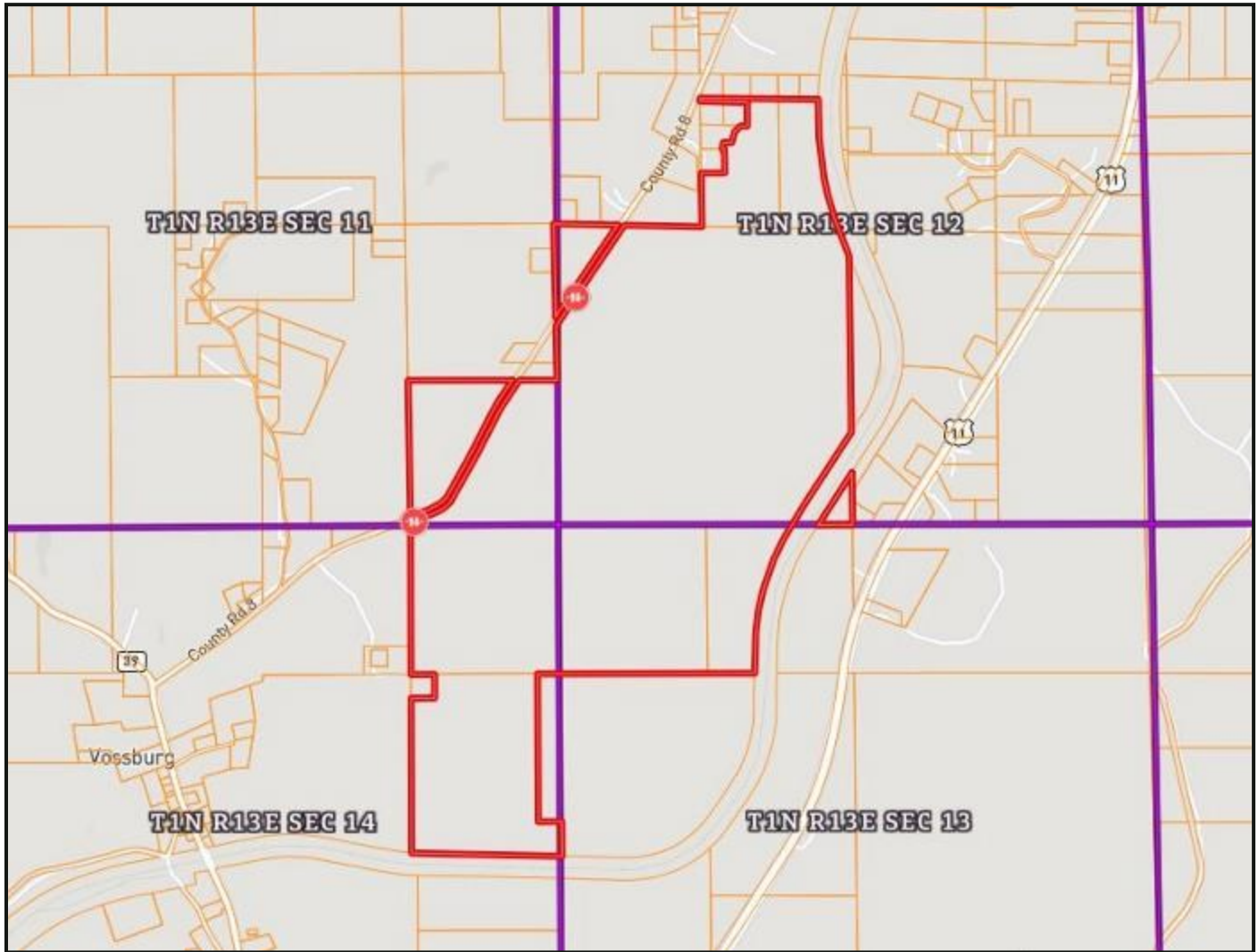
Expect More. Get More.



TomSmithLandandHomes.com

Information is believed to be accurate but not guaranteed.

OWNERSHIP MAP



*Call the
land man
today!*

TOM SMITH, ALC®, BROKER

Tom@TomSmithLand.com

601.898.2772 **office** | 601.454.9397 **cell**



Expect More. Get More.



TomSmithLandandHomes.com

Information is believed to be accurate but not guaranteed.

AERIAL MAP



[CLICK HERE FOR AN INTERACTIVE MAP](#)

*Call the
land man
today!*

TOM SMITH, ALC®, BROKER

Tom@TomSmithLand.com

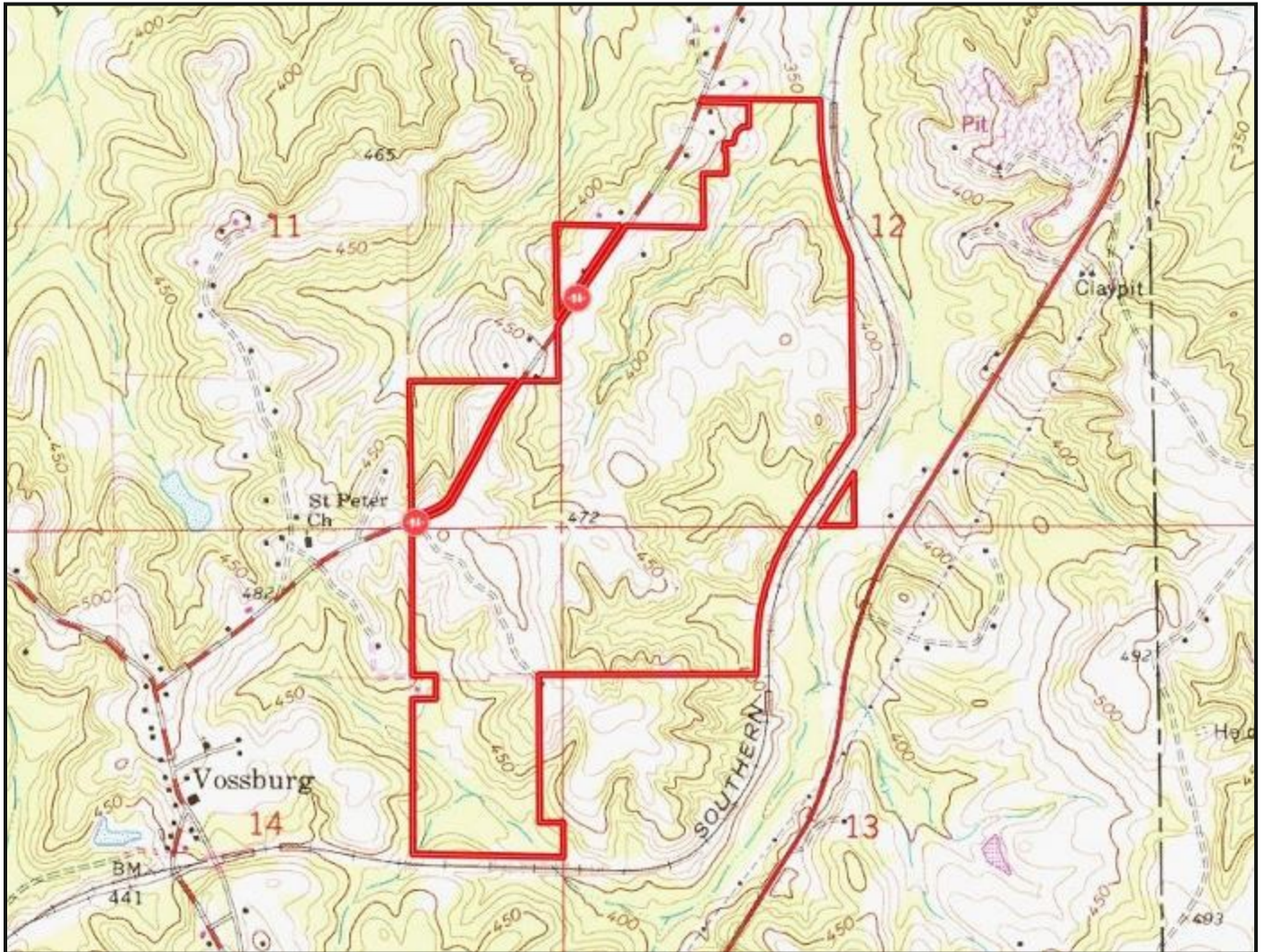
601.898.2772 **office** | 601.454.9397 **cell**



TomSmithLandandHomes.com

Information is believed to be accurate but not guaranteed.

TOPO MAP



*Call the
land man
today!*

TOM SMITH, ALC®, BROKER

Tom@TomSmithLand.com

601.898.2772 **office** | 601.454.9397 **cell**



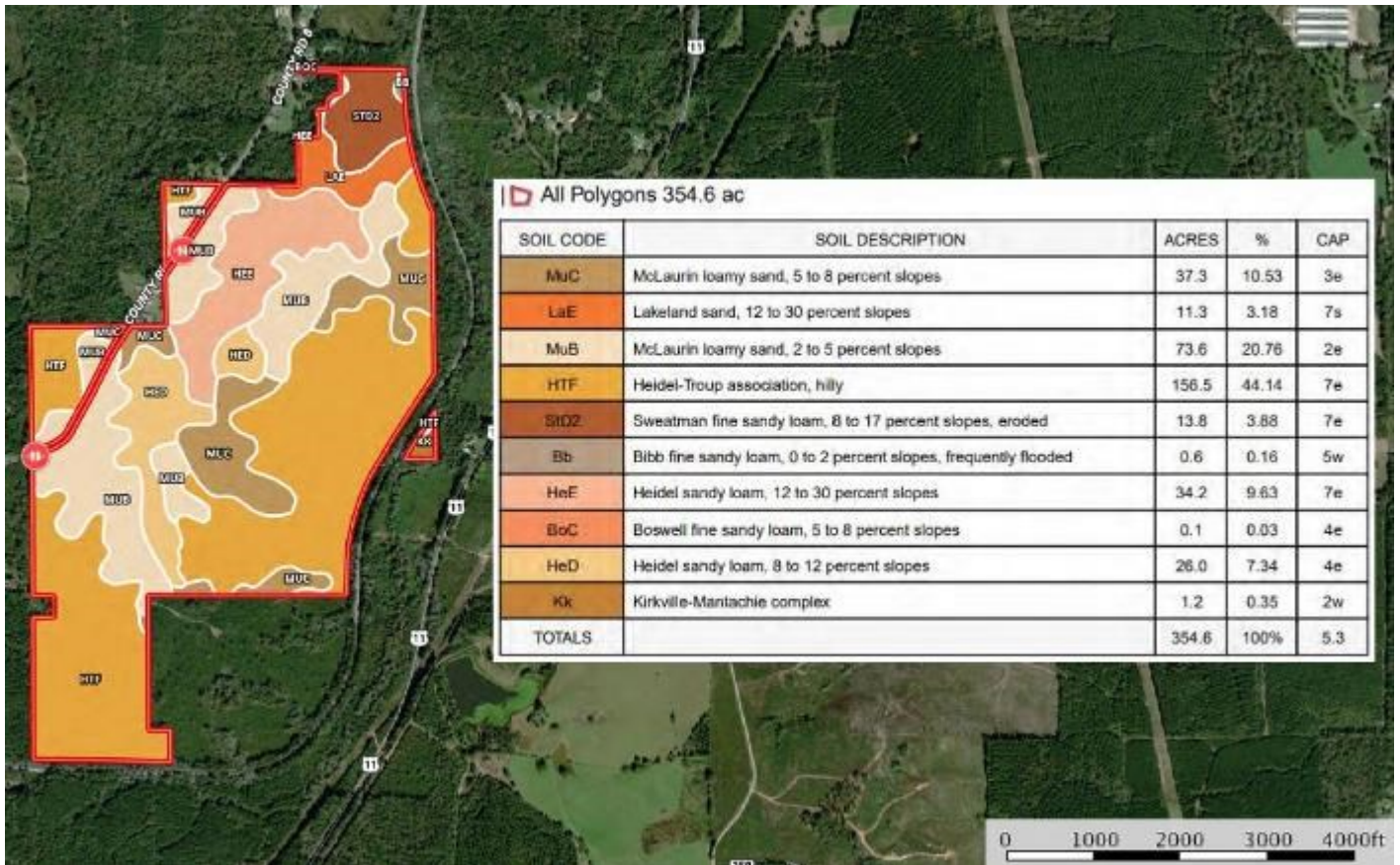
Expect More. Get More.



TomSmithLandandHomes.com

Information is believed to be accurate but not guaranteed.

SOIL MAP



Call the land man today!

TOM SMITH, ALC®, BROKER

Tom@TomSmithLand.com

601.898.2772 **office** | 601.454.9397 **cell**



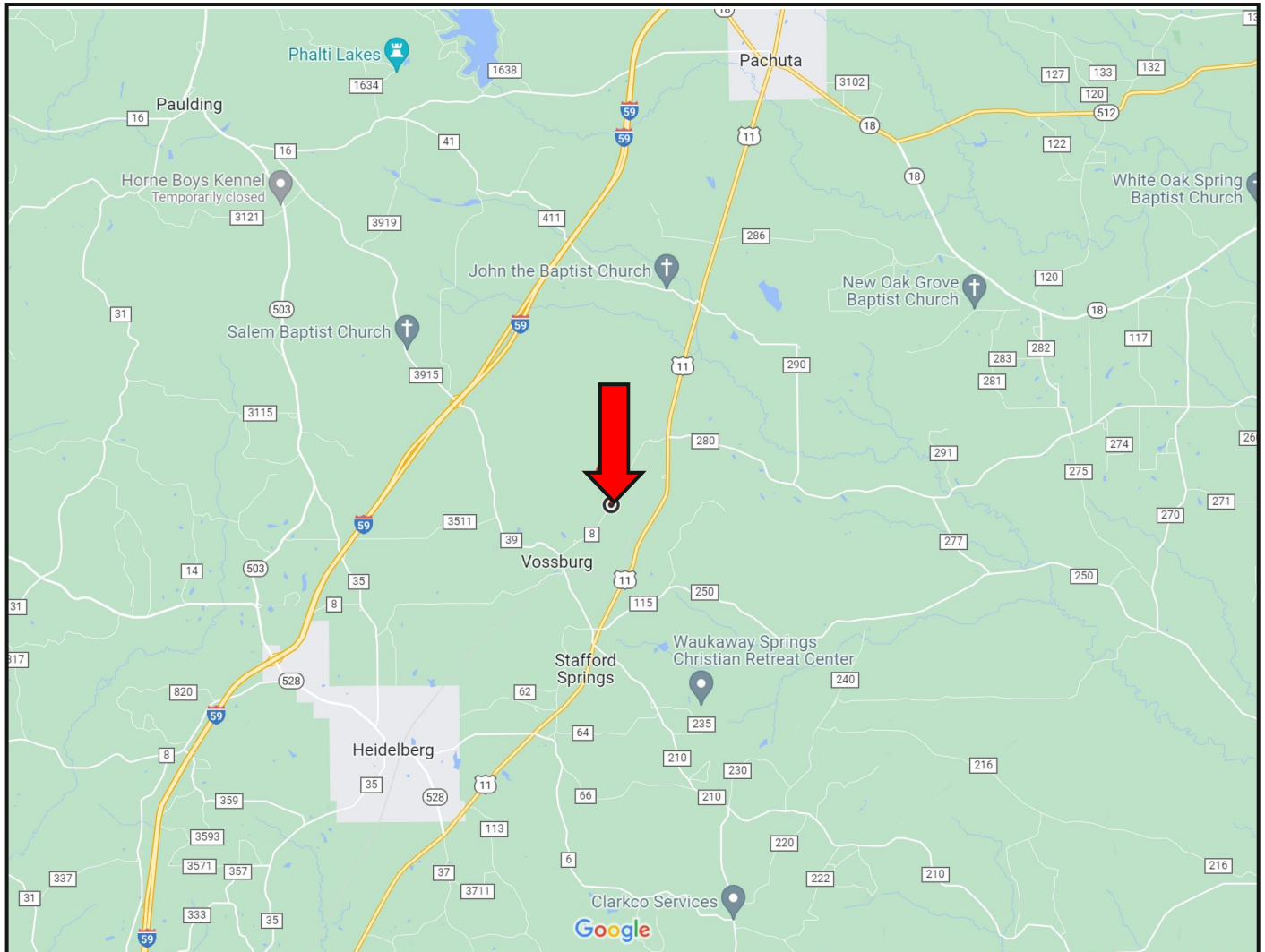
Expect More. Get More.



TomSmithLandandHomes.com

Information is believed to be accurate but not guaranteed.

DIRECTIONAL MAP



Directions from I-59, Exit 118 at Vossburg, MS: Travel southeast on Jasper County Road 35 for 1.9 miles. Road name changes to CR 39. Continue on County Road 39 for 1.3 miles. Turn left on County Road 8; proceed 1 mile. The gated entrance will be on the right.

[GOOGLE MAP LINK](#)

*Call the
land man
today!*



TOM SMITH, ALC®, BROKER
Tom@TomSmithLand.com
601.898.2772 **office** | 601.454.9397 **cell**

TomSmithLandandHomes.com

Information is believed to be accurate but not guaranteed.