



\$2,200/ACRE
333± Acre Hunting Estate
Tate County, MS



- 333+/- Acres in Tate County, MS
- 200+/- Acres MATURE HARDWOODS!
- 40+/- Acres Crop Ground
- Several Ponds
- Outstanding Deer and Turkey Hunting
- Extensive Road System Throughout
- Outstanding Timber Investment
- 8+/- Acres of Established Food Plots
- 30+/- Acres of 12 Year Old Planted Pine
- 15+/- Acres of 45+/- Year Old Pine Saw Timber
- 1.5 Miles of Paved Road Frontage
- 20+/- Acres of 22+/- Year Old Planted Pine
- Once in a Lifetime Opportunity
- Absolutely Beautiful Property!

Directions: From I-55 N take exit 257 for MS-310 toward Como and travel 17.2 miles, turn left onto Bemis Brunt Road and travel 1.1 miles, continue onto Thyatira Tyro and travel 2.4 miles, turn right onto Looxahoma-Tyro Road and travel 0.6 miles, turn left onto Wyatte-Tyro Road and travel 0.5 miles, turn left onto Pearl Smith Road and travel 0.8 miles, Property will be on the right. [Google Map Link](#)



Call The Land Man today!

TOM SMITH, ALC, BROKER®

Tom@TomSmithLand.com

601.898.2772 office | 601.454.9397 cell



TomSmithLand.com

Information is believed to be accurate but not guaranteed.

333+/- Acre Hunting Estate in Tate County, MS

This 333+/- acre estate in Tate County, MS is a rare find! This is one of the most beautiful tracts you will find! The character of the land is second to none as the majestic, towering hardwoods command respect as you ride along the expansive road system traversing the 333+/- acres. Very large established food plots are on the property which will challenge the best of hunters. The timber make-up is diverse and features 200+/- acres of MATURE HARDWOODS, 15+/- acres of 45-50 year old pine saw timber, 20 +/- acres of 22-25 year old planted pine, 30+/- acres of 12 year old planted pine and 40 +/- acres of crop ground. Did I mention this property offers diversity?!

The deer and turkey management has been outstanding. This tract produces trophy animals on a consistent basis. You and your family will not go wrong on this wonderful place. It offers everything you could be looking for: hunting, fishing, farming, income, hardwoods, pine, creeks, ponds, paved roads...it just doesn't get any better!

Private Showings Only. Please call Tom Smith, 601.454.9397 or email Tom@TomSmithLand.com to schedule your viewing of this premier property.



TOM SMITH, ALC, BROKER®
Tom@TomSmithLand.com
601.898.2772 office | 601.454.9397 cell



TomSmithLand.com

Information is believed to be accurate but not guaranteed.



TOM SMITH, ALC, BROKER®
Tom@TomSmithLand.com
601.898.2772 office | 601.454.9397 cell



TomSmithLand.com

Information is believed to be accurate but not guaranteed.



TOM SMITH, ALC, BROKER®
Tom@TomSmithLand.com
601.898.2772 office | 601.454.9397 cell



TomSmithLand.com

Information is believed to be accurate but not guaranteed.

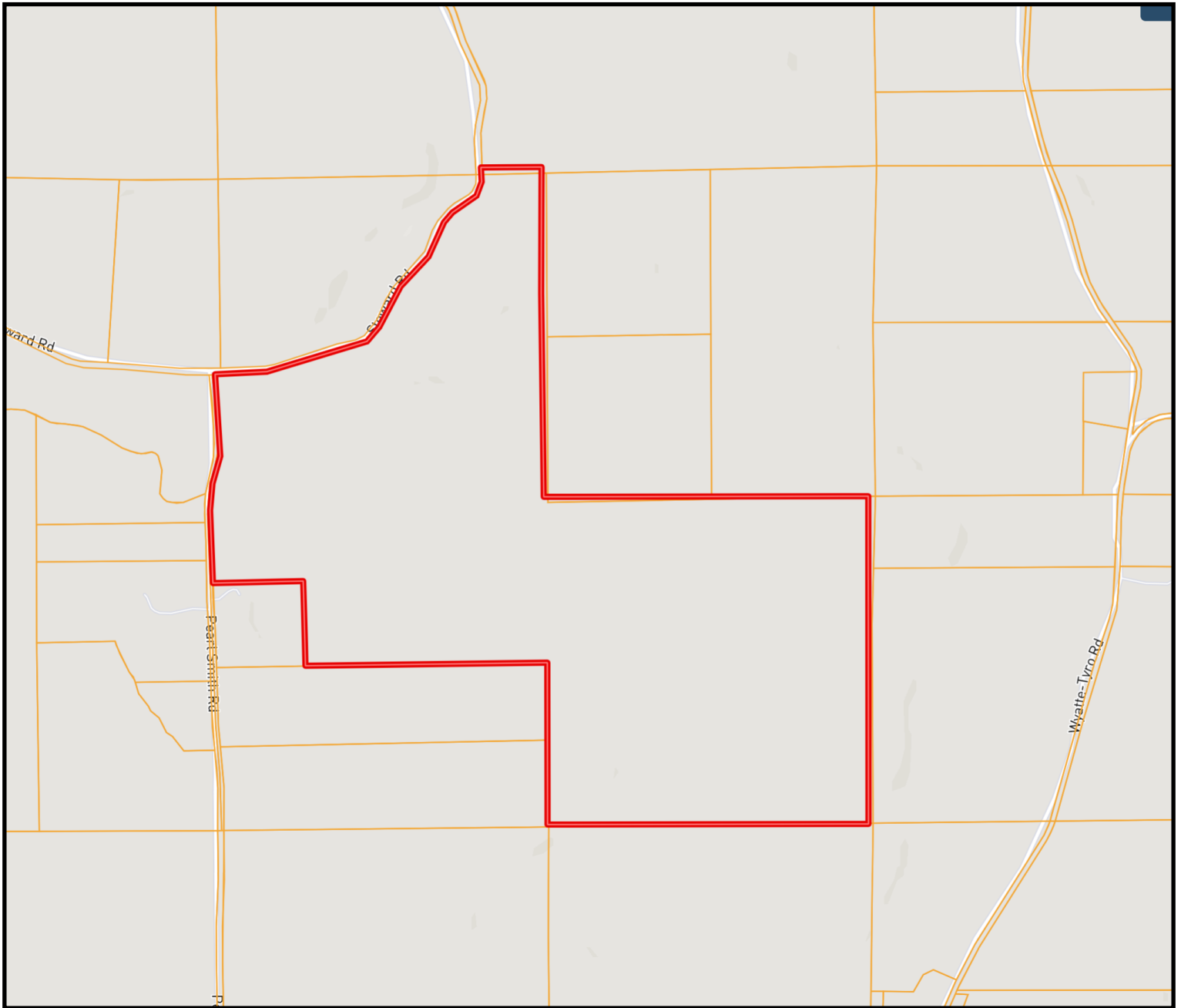


TOM SMITH, ALC, BROKER®
Tom@TomSmithLand.com
601.898.2772 office | 601.454.9397 cell



TomSmithLand.com

Information is believed to be accurate but not guaranteed.



Ownership Map

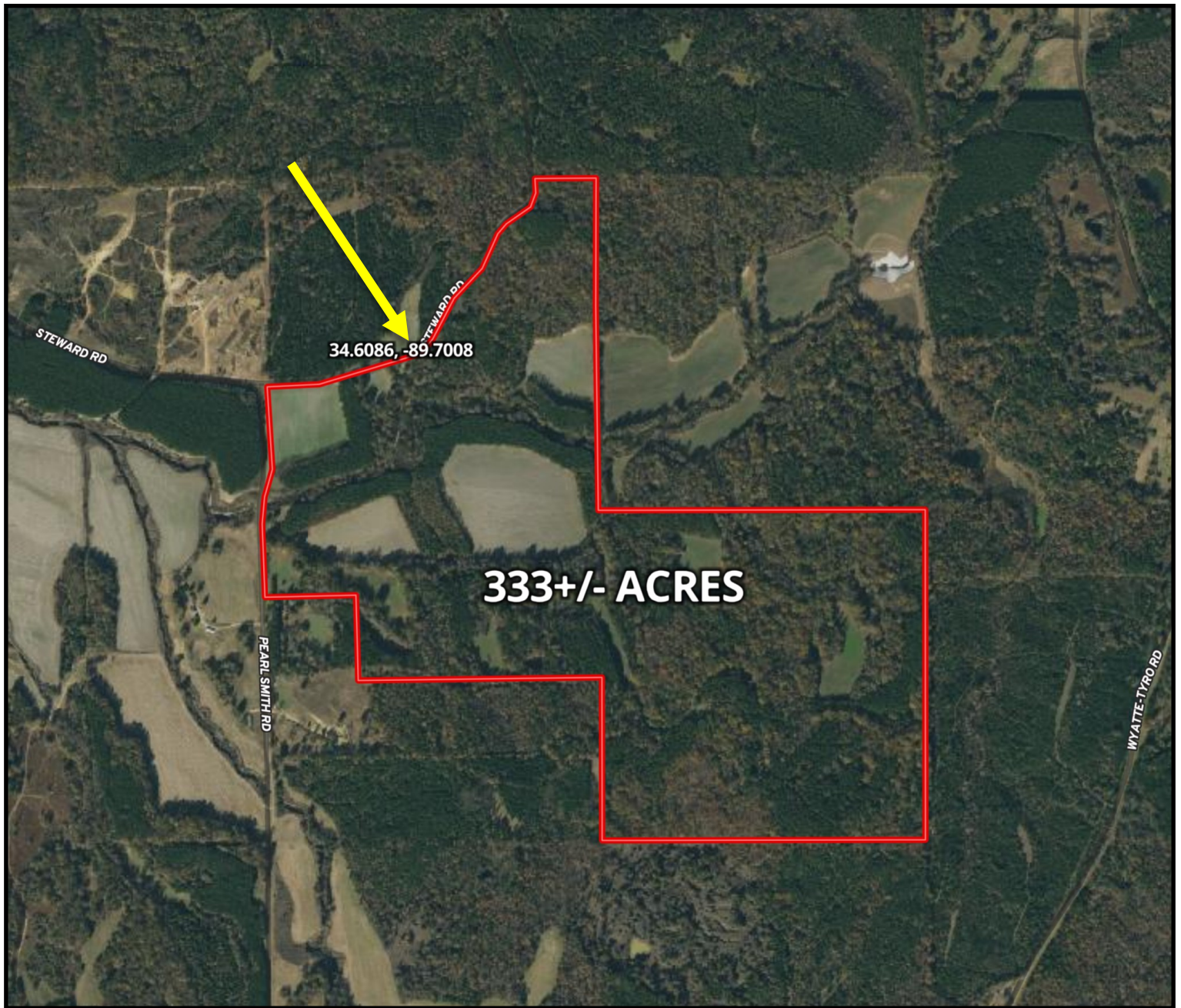


TOM SMITH, ALC, BROKER®
Tom@TomSmithLand.com
601.898.2772 office | 601.454.9397 cell



TomSmithLand.com

Information is believed to be accurate but not guaranteed.



Aerial Map

Click [HERE](#) for an Interactive Map

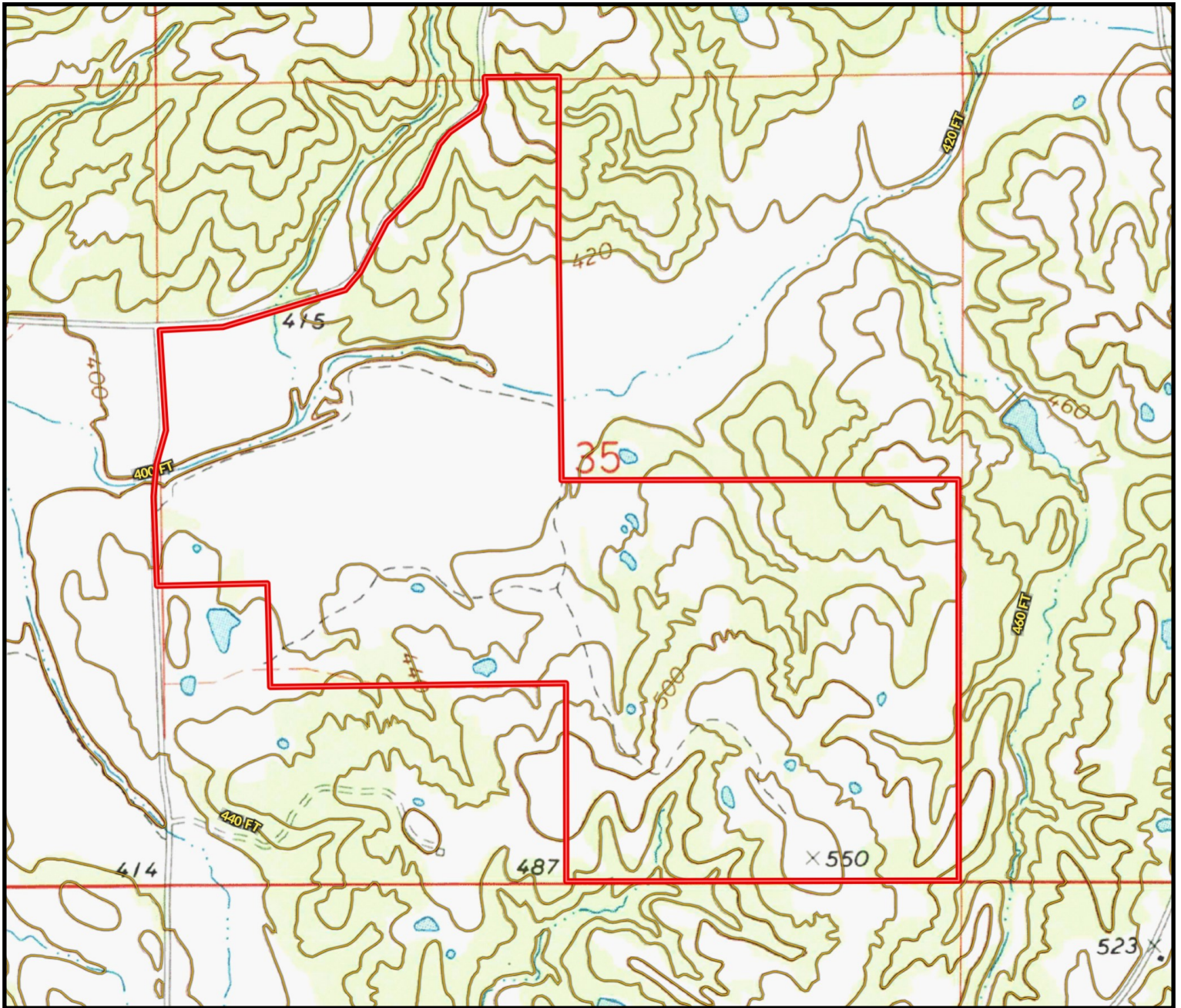


TOM SMITH, ALC, BROKER®
Tom@TomSmithLand.com
601.898.2772 office | 601.454.9397 cell



TomSmithLand.com

Information is believed to be accurate but not guaranteed.



Topo Map

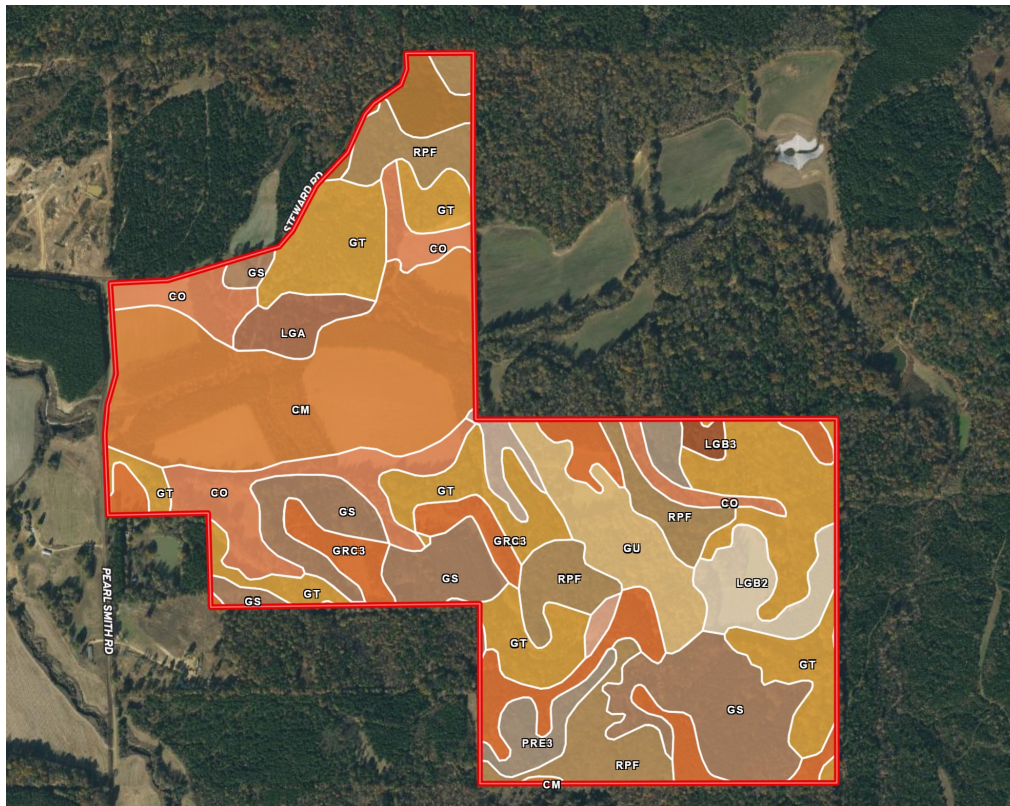


TOM SMITH, ALC, BROKER®
 Tom@TomSmithLand.com
 601.898.2772 office | 601.454.9397 cell



TomSmithLand.com

Information is believed to be accurate but not guaranteed.



Soil Map

SOIL CODE	SOIL DESCRIPTION	ACRES	%	CAP
RpF	Ruston-Providence complex, 17 to 50 percent slopes (smithdale, providence)	33.9	10.16	7e
GrC3	Grenada silt loam, 5 to 8 percent slopes, severely eroded	30.5	9.14	4e
LgB2	Loring-Grenada silt loams, 2 to 5 percent slopes, eroded	11.6	3.49	2e
Gt	Gullied land, sandy	72.8	21.85	7e
LgB3	Loring-Grenada silt loams, 2 to 5 percent slopes, severely eroded	1.8	0.54	3e
PrE3	Providence-Ruston complex 12 to 17 percent slopes, severely eroded (providence-smithdale)	9.1	2.73	7e
GrD3	Grenada silt loam, 8 to 12 percent slopes, severely eroded (loring)	1.3	0.38	6e
Co	Collins silt loam, local alluvium, 0 to 2 percent slopes, occasionally flooded, brief duration	31.1	9.34	2w
Gu	Gullied land, silty	17.1	5.13	7e
MeC3	Memphis silt loam, 5 to 8 percent slopes, severely eroded, north	6.1	1.83	4e
LgA	Loring-Grenada silt loams, 0 to 2 percent slopes	6.7	2.0	2w
cm	Collins silt loam	64.6	19.39	2w
PrE	Providence-Ruston complex, 12 to 17 percent slopes (providence, smithdale)	0.1	0.03	6e
Gs	Grenada-Gullied land complex (loring)	43.2	12.97	4e
LgB	Loring-Grenada silt loams, 2 to 5 percent slopes	3.3	1.0	2e
Fa	Falaya silt loam	0.1	0.02	2w

TOM SMITH, ALC, BROKER®

Tom@TomSmithLand.com

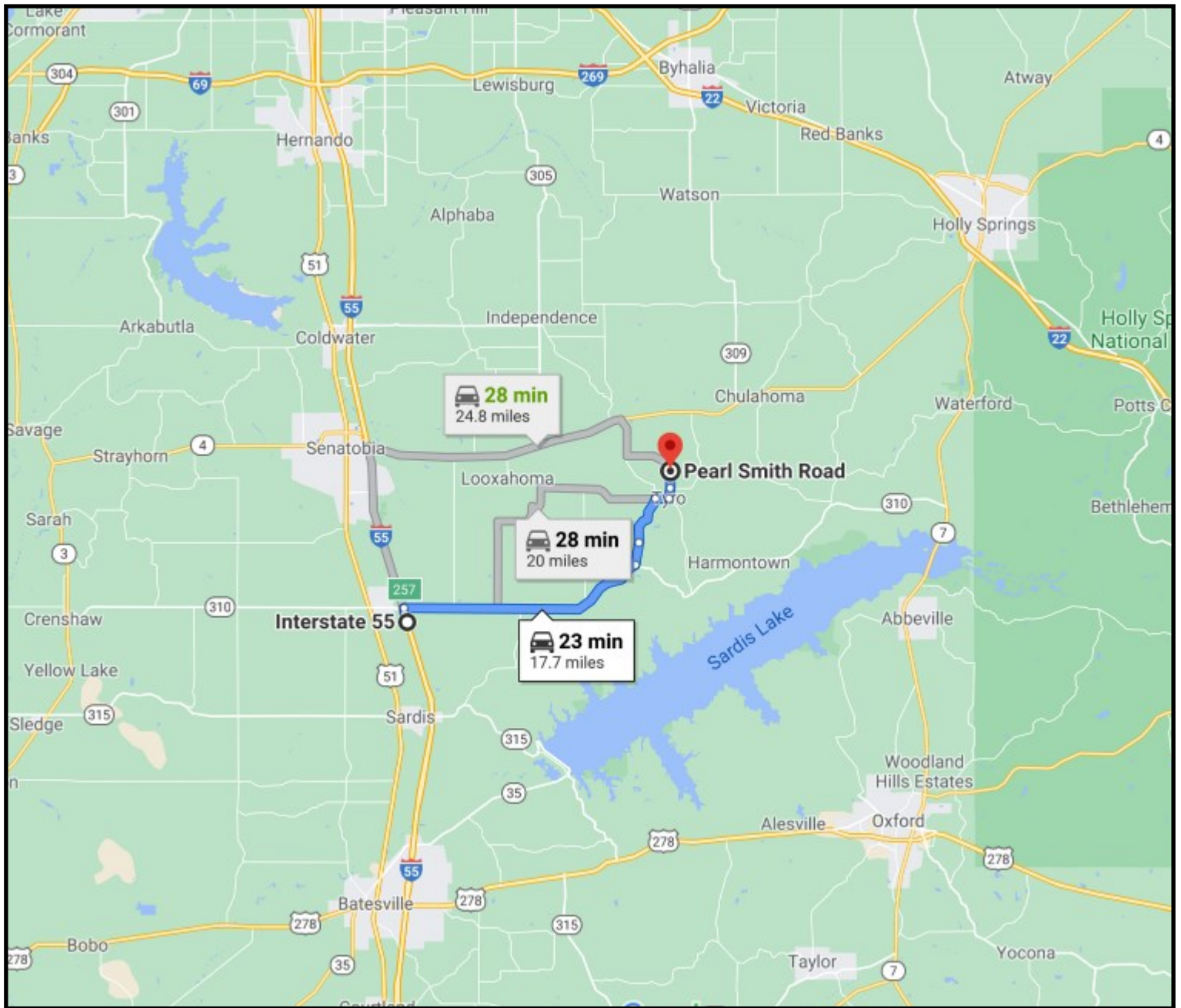
601.898.2772 office | 601.454.9397 cell



TomSmithLand.com

Information is believed to be accurate but not guaranteed.





Directional Map

Directions: From I-55 N take exit 257 for MS-310 toward Como and travel 17.2 miles, turn left onto Bemis Brunt Road and travel 1.1 miles, continue onto Thyatira Tyro and travel 2.4 miles, turn right onto Looxahoma-Tyro Road and travel 0.6 miles, turn left onto Wyatte-Tyro Road and travel 0.5 miles, turn left onto Pearl Smith Road and travel 0.8 miles, Property will be on the right.

[Google Map Link](#)

call The Land Man today!



TOM SMITH, ALC, BROKER®

Tom@TomSmithLand.com

601.898.2772 office | 601.454.9397 cell



Expect More. Get More.

TomSmithLand.com

Information is believed to be accurate but not guaranteed.

