

38+/- Acres in Leake County, MS



\$78,000



If you are looking for an excellent small hunting tract or a great homesite in the country then you will want to check out this 38+/- acre property located just minutes from Thomastown in rural Leake County, MS. This tract features plantation pines that are approximately 11 years old. The property offers county dirt road frontage and utilities are available. Don't miss out, call Chad today!

Directions from Thomastown, MS: Travel north on Hwy 43 from the 4 way in Thomastown, turn left on Beamon Rd. Travel 1.8 miles and the property will be on the right.
Address: Beamon Rd, Kosciusko, MS 39090



Call me today!

CHAD WILSON, REALTOR®
Chad@TomSmithLand.com
601.898.2772 office | 601.750.1970 cell



TomSmithLandandHomes.com

Information is believed to be accurate but not guaranteed.



Call me today!

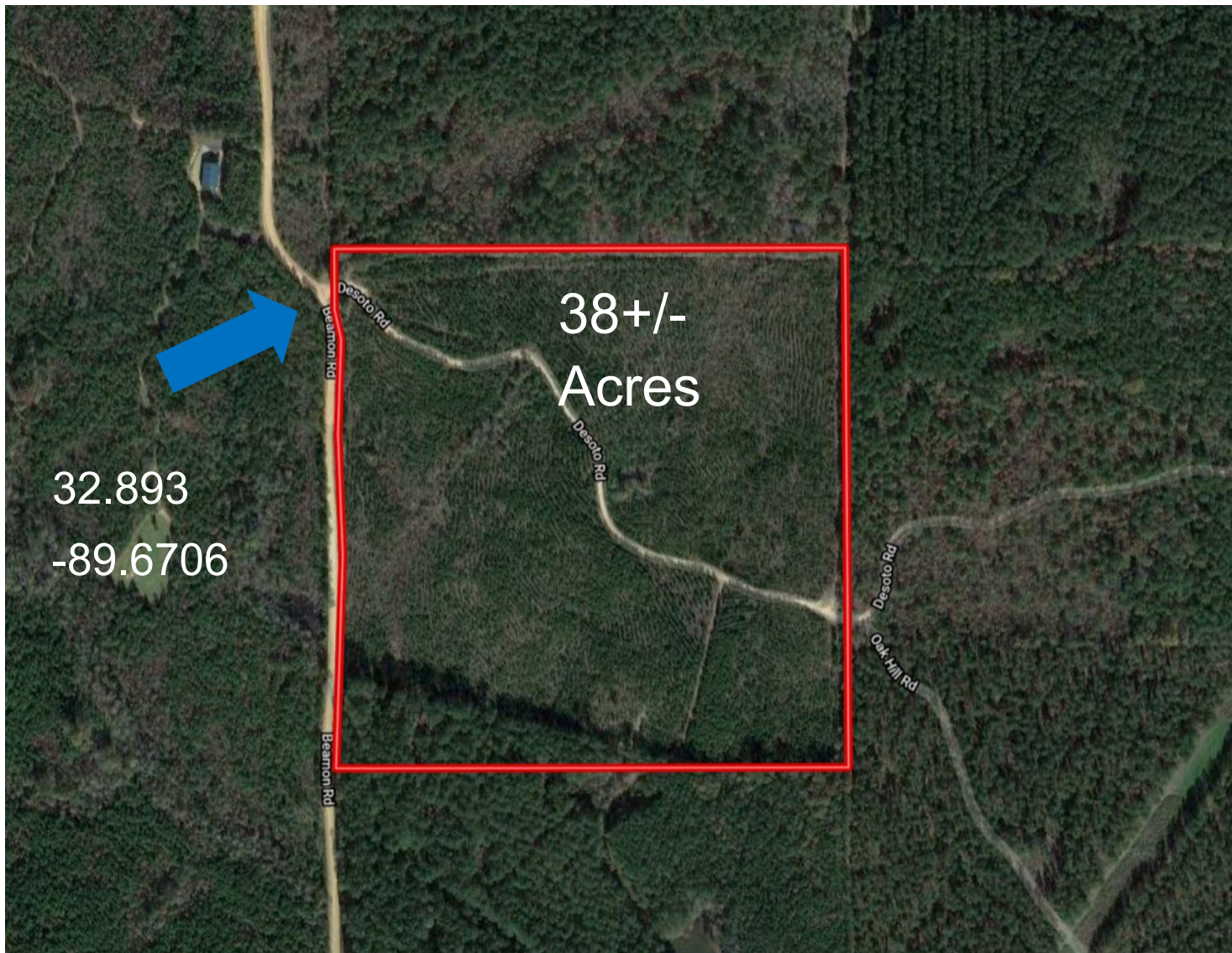
CHAD WILSON, REALTOR®
Chad@TomSmithLand.com
601.898.2772 office | 601.750.1970 cell



Expect More. Get More.

TomSmithLandandHomes.com

Information is believed to be accurate but not guaranteed.



Aerial Map

Call me today!

CHAD WILSON, REALTOR®
Chad@TomSmithLand.com
601.898.2772 office | 601.750.1970 cell



Expect More. Get More.



TomSmithLandandHomes.com

Information is believed to be accurate but not guaranteed.



Flood Map

Call me today!

CHAD WILSON, REALTOR®
Chad@TomSmithLand.com
601.898.2772 office | 601.750.1970 cell

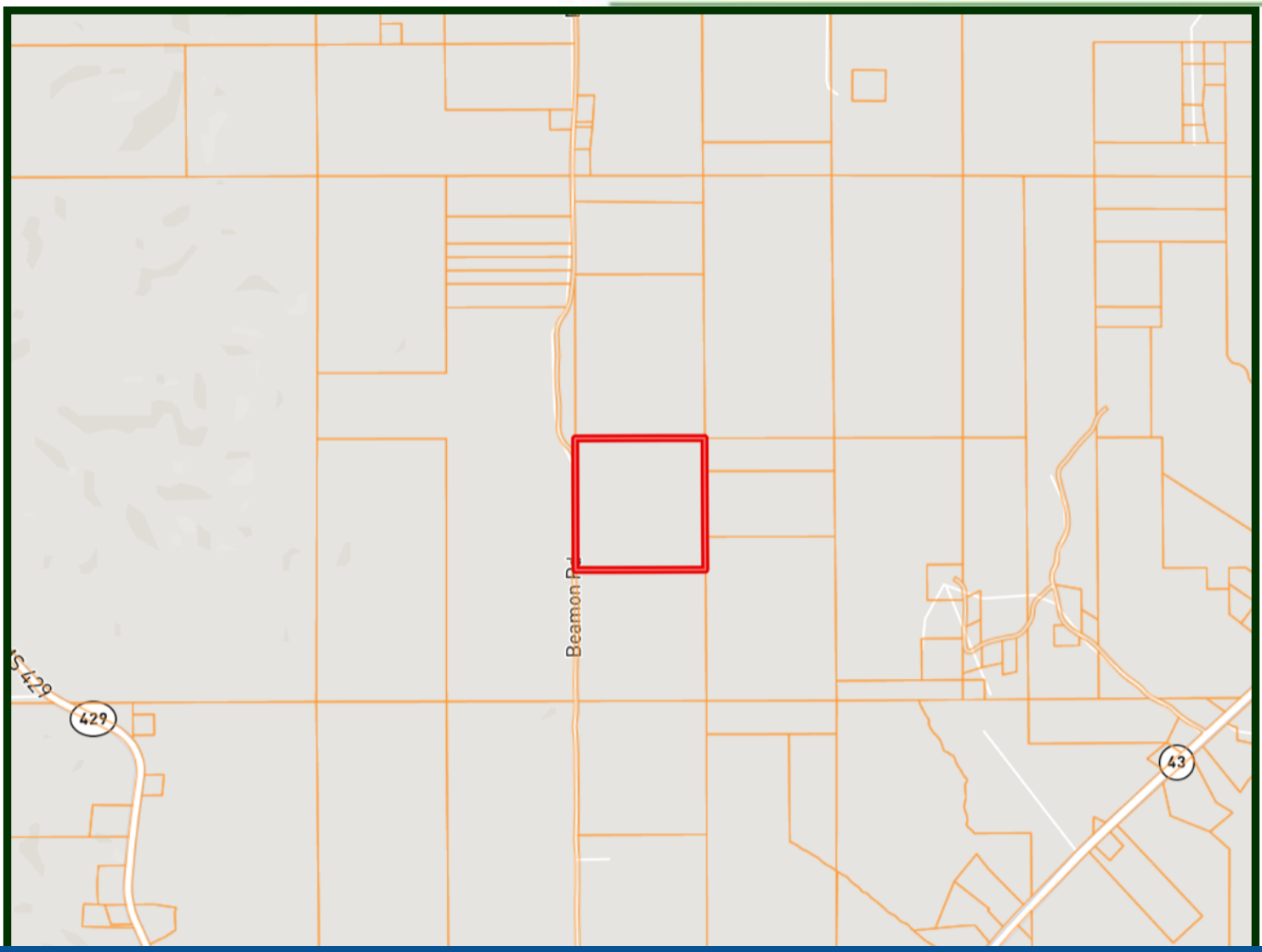


Expect More. Get More.



TomSmithLandandHomes.com

Information is believed to be accurate but not guaranteed.



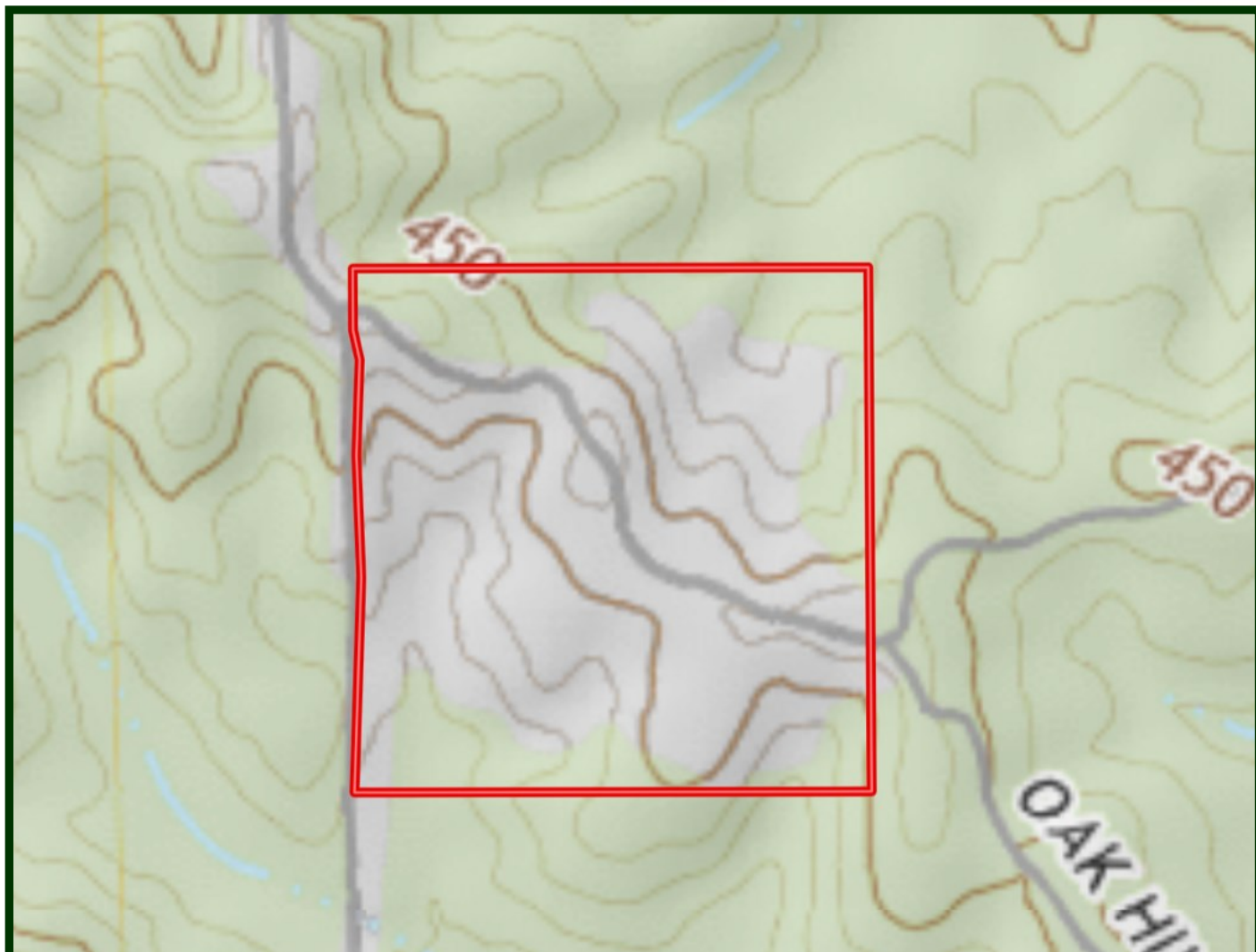
Ownership Map

AUSTIN WILSON, REALTOR®
Austin@TomSmithLand.com
601.898.2772 office | 601.826.0816 cell



TomSmithLandandHomes.com

Information is believed to be accurate but not guaranteed.



Topo Map

Call me today!

CHAD WILSON, REALTOR®
Chad@TomSmithLand.com
601.898.2772 office | 601.750.1970 cell

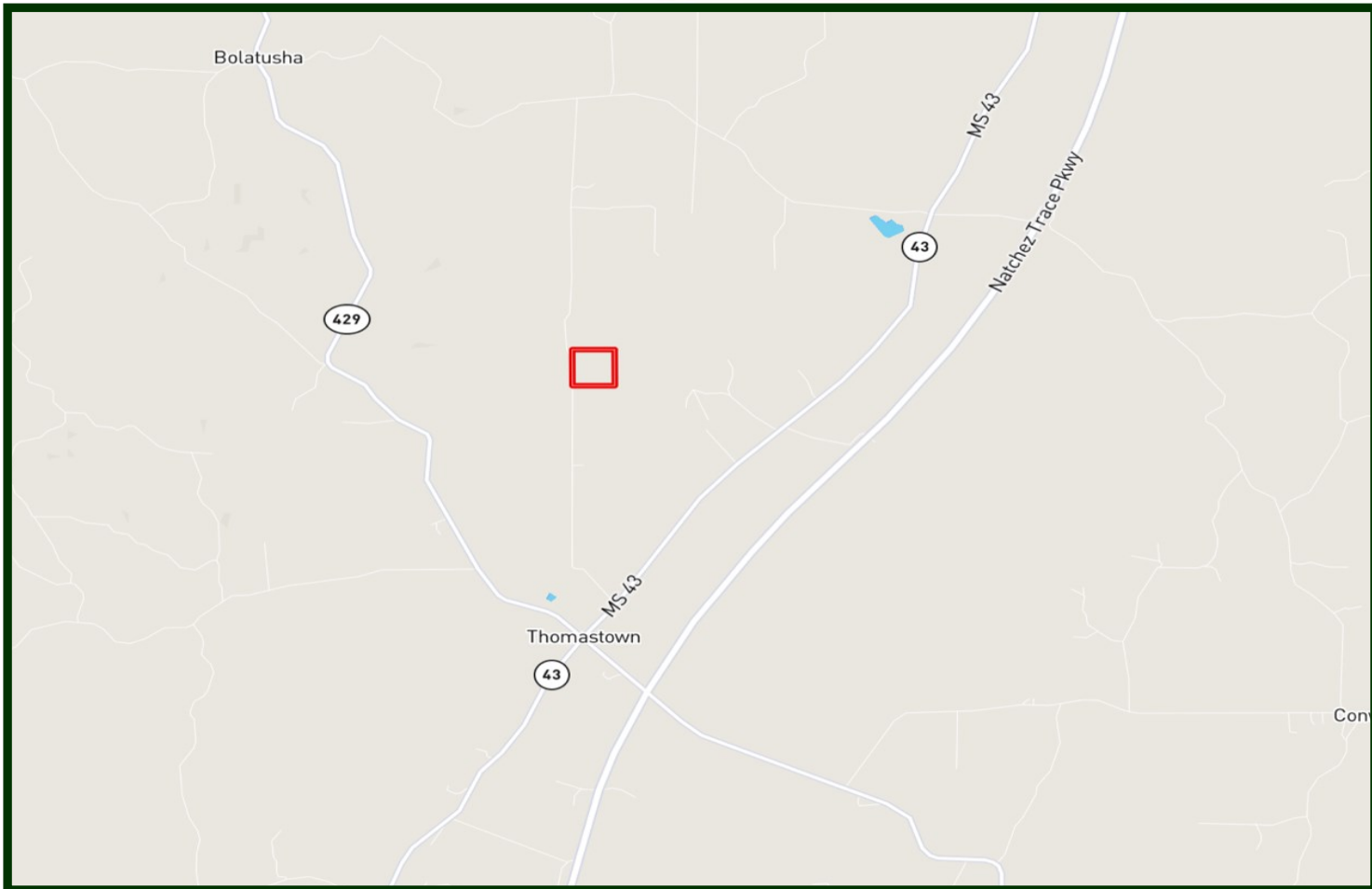


Expect More. Get More.



TomSmithLandandHomes.com

Information is believed to be accurate but not guaranteed.



Directional Map

Travel north on Hwy 43 from the 4 way in Thomastown, turn left on Beamon Rd.
Travel 1.8 miles and the property will be on the right.
Address: Beamon Rd, Kosciusko, MS 39090



Call me today!

CHAD WILSON, REALTOR®
Chad@TomSmithLand.com
601.898.2772 office | 601.750.1970 cell



TomSmithLandandHomes.com

Information is believed to be accurate but not guaranteed.