

38+/- Acres in Leake County, MS

\$78,000



If you are looking for an excellent small hunting tract or a great homesite in the country then you will want to check out this 38+/- acre property located just minutes from Thomastown in rural Leake County, MS. This tract features plantation pines that are approximately 11 years old. The property offers county dirt road frontage and utilities are available. Don't miss out, call Austin today!

Directions from Thomastown, MS: Travel north on Hwy 43 from the 4 way in Thomastown, turn left on Beamon Rd. Travel 1.8 miles and the property will be on the right.

Address: Beamon Rd, Kosciusko, MS 39090



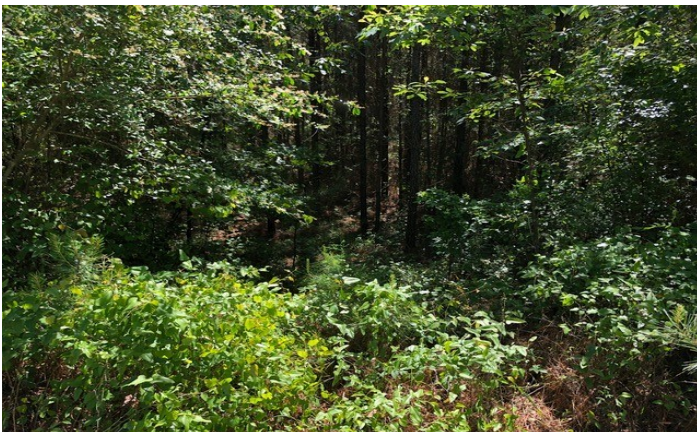
call me today!

AUSTIN WILSON, REALTOR®
Austin@TomSmithLand.com

601.898.2772 office | 601.826.0816 cell



TomSmithLandandHomes.com



AUSTIN WILSON, REALTOR®
Austin@TomSmithLand.com
601.898.2772 office | 601.826.0816 cell

**Tom
Smith
LAND AND
HOMES**
Expect More. Get More.

TomSmithLandandHomes.com

Information is believed to be accurate but not guaranteed.



Aerial Map

AUSTIN WILSON, REALTOR®
Austin@TomSmithLand.com
601.898.2772 office | 601.826.0816 cell



TomSmithLandandHomes.com

Information is believed to be accurate but not guaranteed.



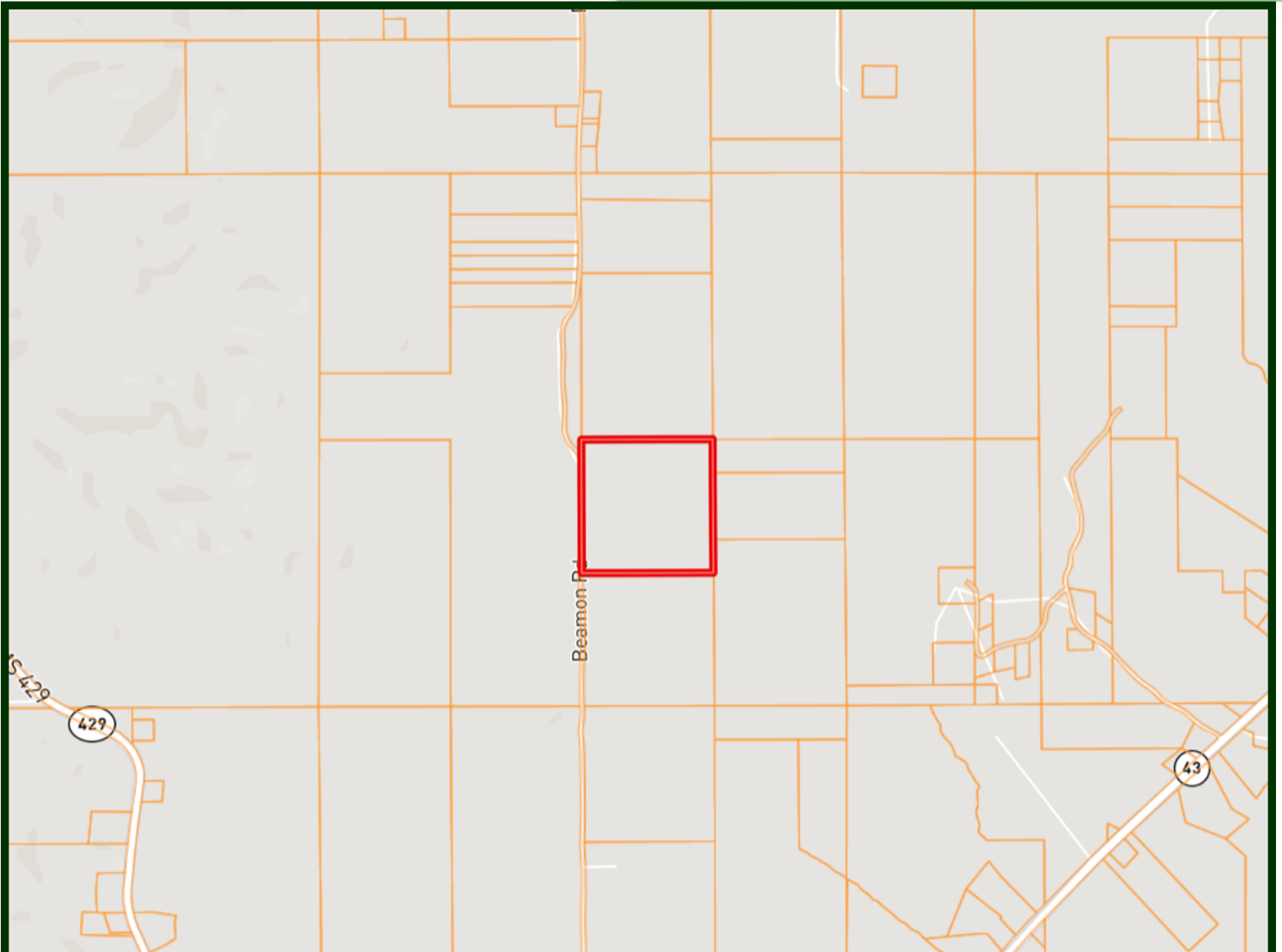
Flood Map

AUSTIN WILSON, REALTOR®
Austin@TomSmithLand.com
601.898.2772 office | 601.826.0816 cell



TomSmithLandandHomes.com

Information is believed to be accurate but not guaranteed.



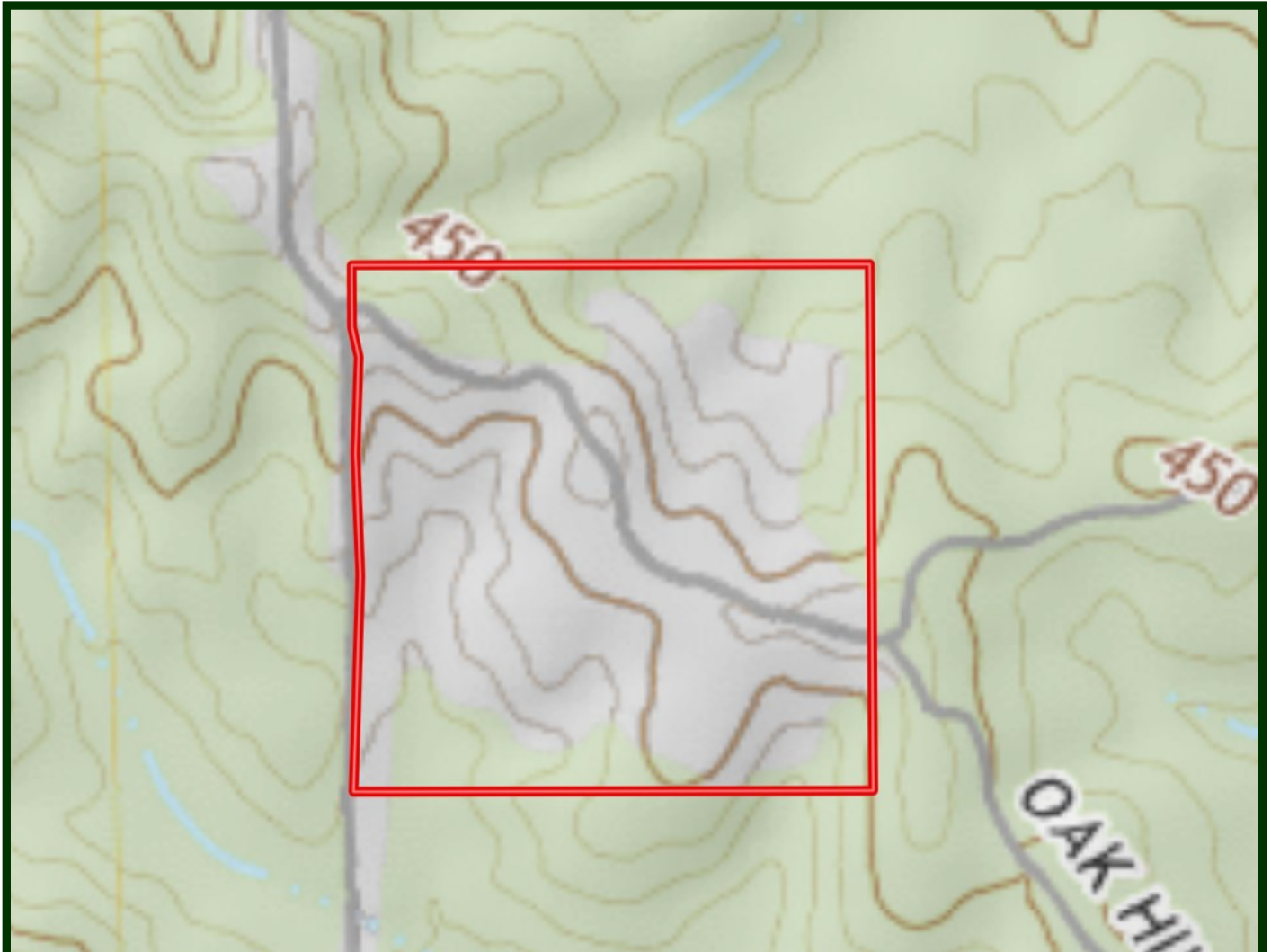
Ownership Map

AUSTIN WILSON, REALTOR®
Austin@TomSmithLand.com
601.898.2772 office | 601.826.0816 cell



TomSmithLandandHomes.com

Information is believed to be accurate but not guaranteed.



Topo Map

AUSTIN WILSON, REALTOR®
Austin@TomSmithLand.com
601.898.2772 office | 601.826.0816 cell



TomSmithLandandHomes.com

Information is believed to be accurate but not guaranteed.



Soil Map

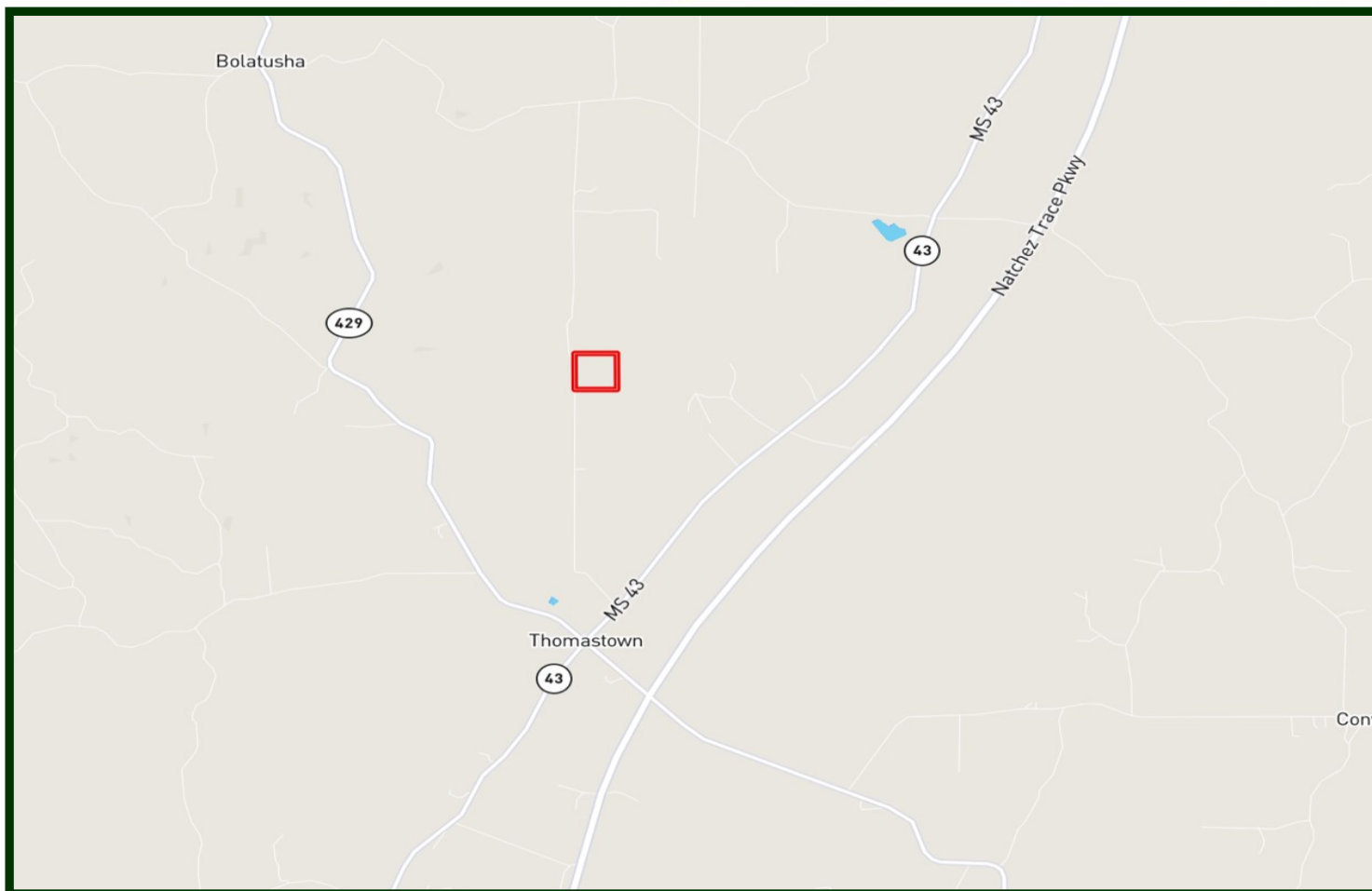
OrB	Ora fine sandy loam, 2 to 5 percent slopes	9.9	24.6%	2e	?
BdA	Bude silt loam, 0 to 2 percent slopes	7.8	19.6%	2w	?
PrC2	Providence silt loam, 5 to 8 percent slopes, eroded	22.3	55.8%	3e	?
Totals	40 Ac	2.6 Cap. Average			

AUSTIN WILSON, REALTOR®
 Austin@TomSmithLand.com
 601.898.2772 office | 601.826.0816 cell



TomSmithLandandHomes.com

Information is believed to be accurate but not guaranteed.



Directional Map

Travel north on Hwy 43 from the 4 way in Thomastown, turn left on Beamon Rd.

Travel 1.8 miles and the property will be on the right.

Address: Beamon Rd, Kosciusko, MS 39090

AUSTIN WILSON, REALTOR®
Austin@TomSmithLand.com
601.898.2772 office | 601.826.0816 cell



TomSmithLandandHomes.com