



149+/- Acres in Holmes County, MS



- 149+/- Acres in Holmes County, MS
- Located in the Emory Community
- Young Plantation Pines
- Wildlife Habitat
- Gravel and Blacktop Frontage

\$285,250

This 149+/- acre tract in the Emory Community of Holmes County, MS is a nice young stand of plantation pines that is part of a very large investment trust. The property offers frontage on two county gravel roads as well as one paved county road. Utilities are available and there are multiple camp sites. Wildlife management is part of this group's method for producing income from this tract.

Directions from the intersection of HWY 12 and HWY 51 in Durant, MS: Travel north on Hwy. 51 for 3.8 miles. Turn left on Brister Road and travel 2.7 miles to the property on the right.

GPS: 33.1681, -89.8282



Call me today!

SAM SAMPLE, REALTOR®
Sam@TomSmithLand.com

601.898.2772 office | 601.668.5697 cell



TomSmithLandandHomes.com



SAM SAMPLE, REALTOR®
 Sam@TomSmithLand.com
 601.898.2772 **office** | 601.668.5697 **cell**



TomSmithLandandHomes.com

Information is believed to be accurate but not guaranteed.



SAM SAMPLE, REALTOR®
Sam@TomSmithLand.com
601.898.2772 **office** | 601.668.5697 **cell**



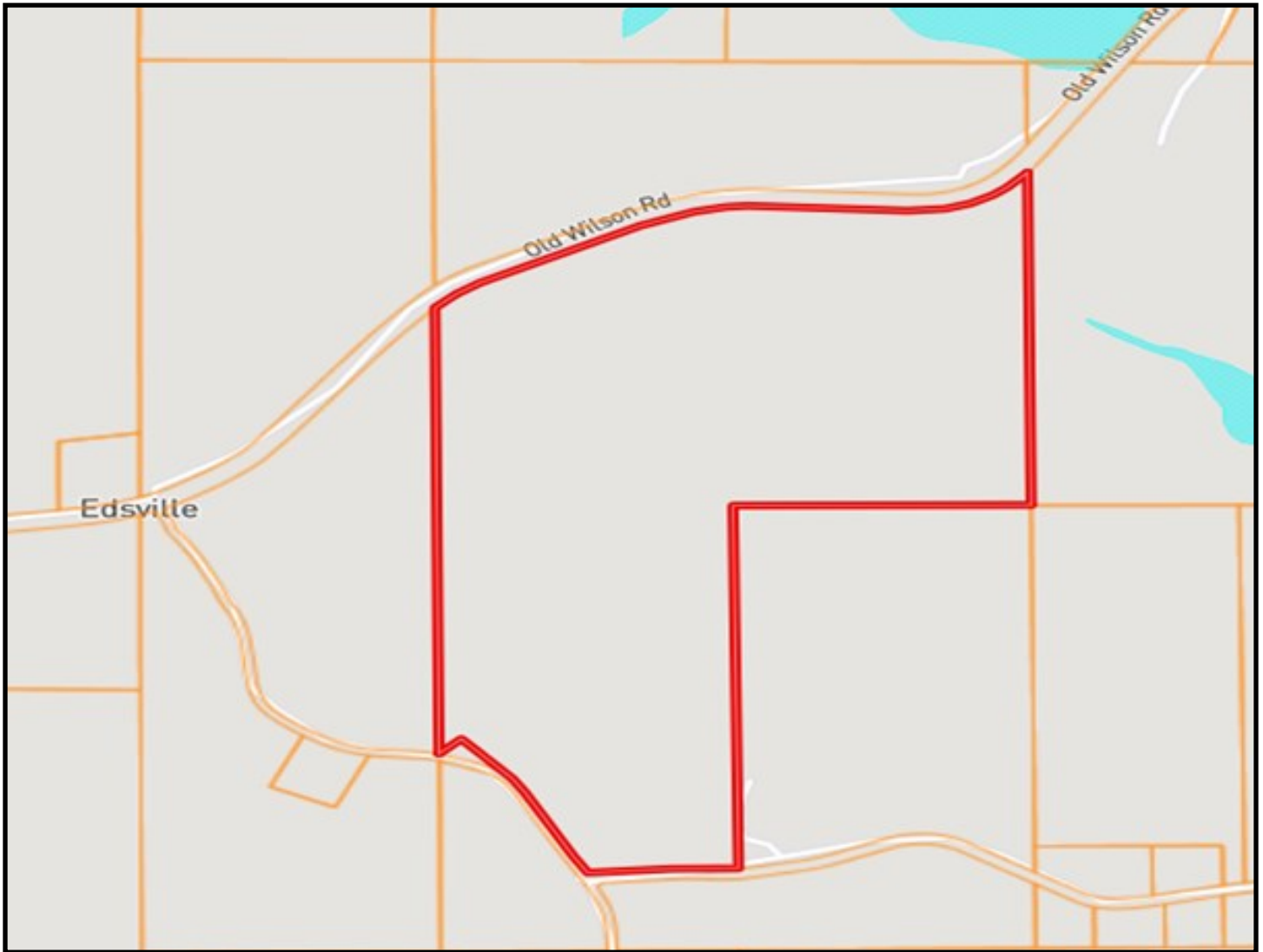
TomSmithLandandHomes.com

Information is believed to be accurate but not guaranteed.



PotlatchDeltic

Preferred
BROKER



Ownership Map



SAM SAMPLE, REALTOR®
Sam@TomSmithLand.com
601.898.2772 office | 601.668.5697 cell



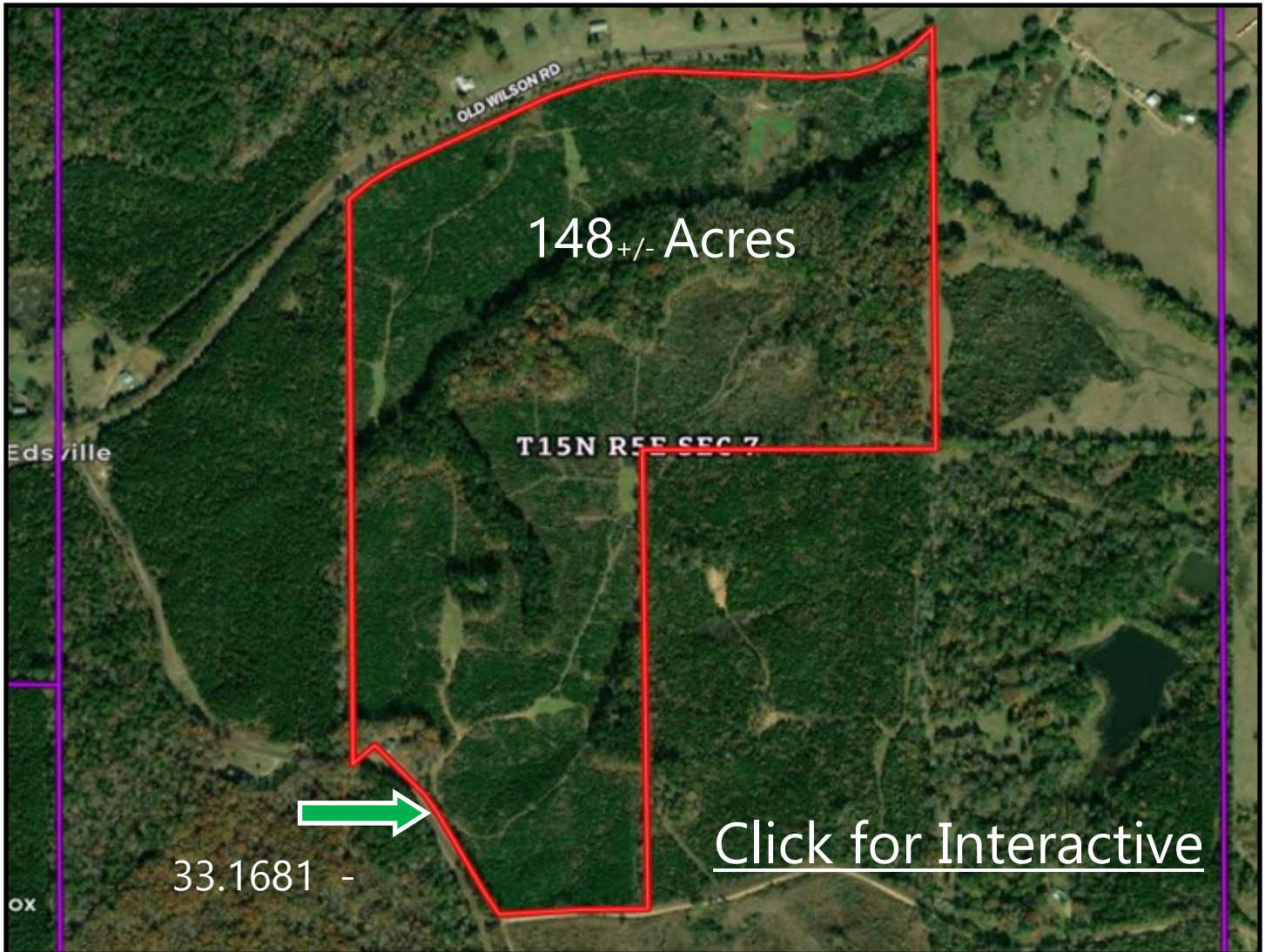
TomSmithLandandHomes.com

Information is believed to be accurate but not guaranteed.



PotlatchDeltic

Preferred
BROKER



Aerial Map



SAM SAMPLE, REALTOR®

Sam@TomSmithLand.com

601.898.2772 office | 601.668.5697 cell



Expect More. Get More.

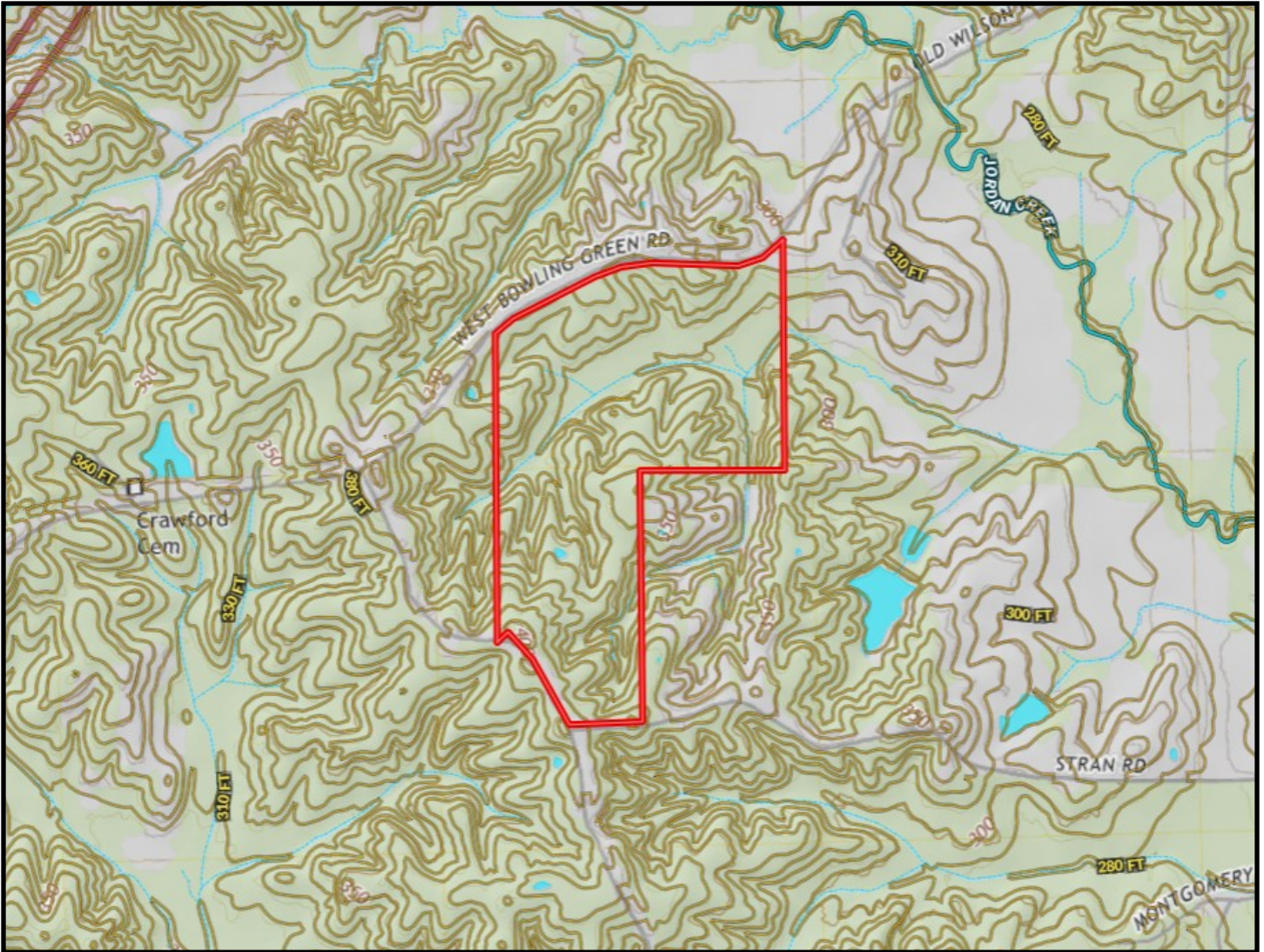
TomSmithLandandHomes.com

Information is believed to be accurate but not guaranteed.



PotlatchDeltic

Preferred
BROKER



Topo Map



SAM SAMPLE, REALTOR®

Sam@TomSmithLand.com

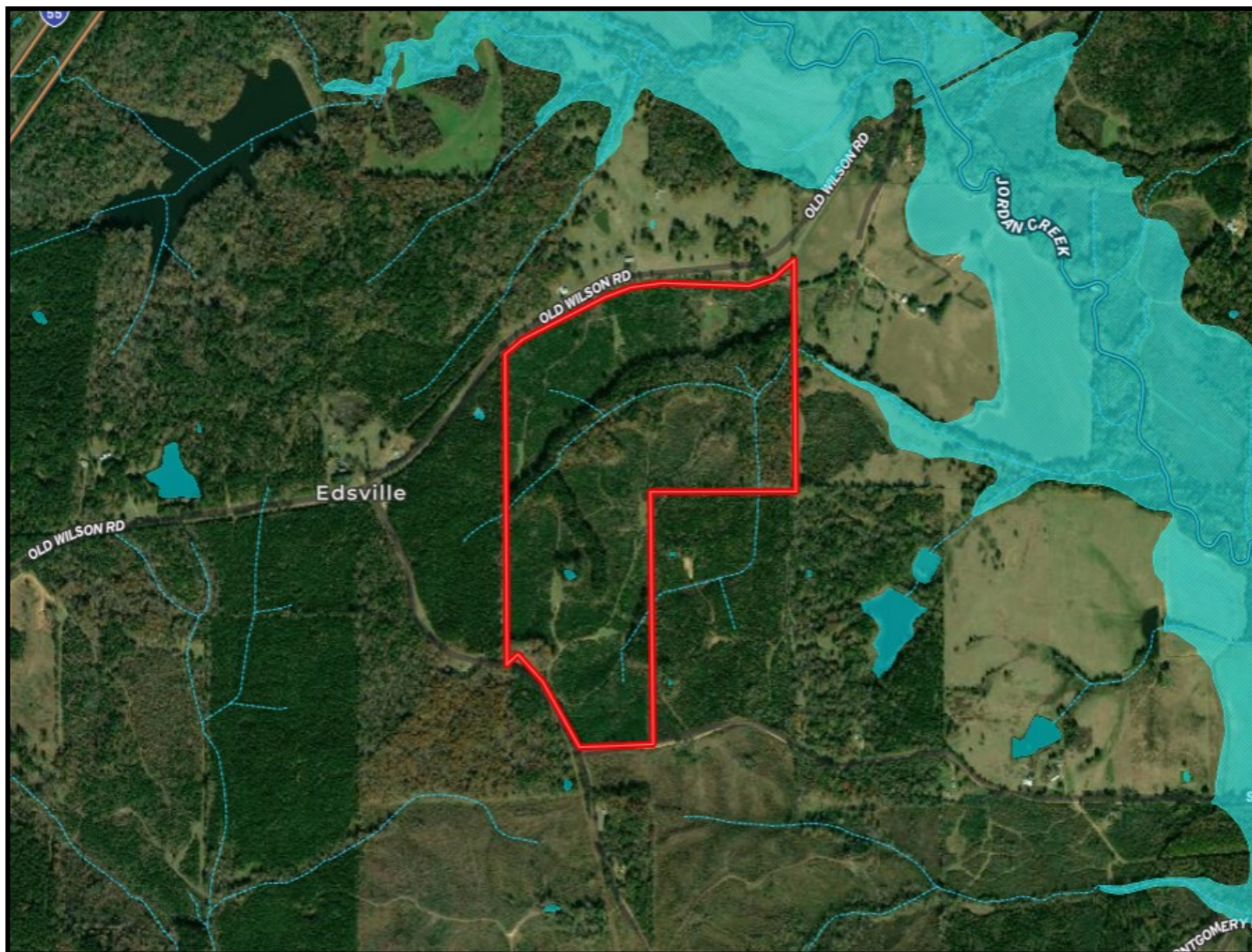
601.898.2772 office | 601.668.5697 cell



Expect More. Get More.

TomSmithLandandHomes.com

Information is believed to be accurate but not guaranteed.



Flood Map

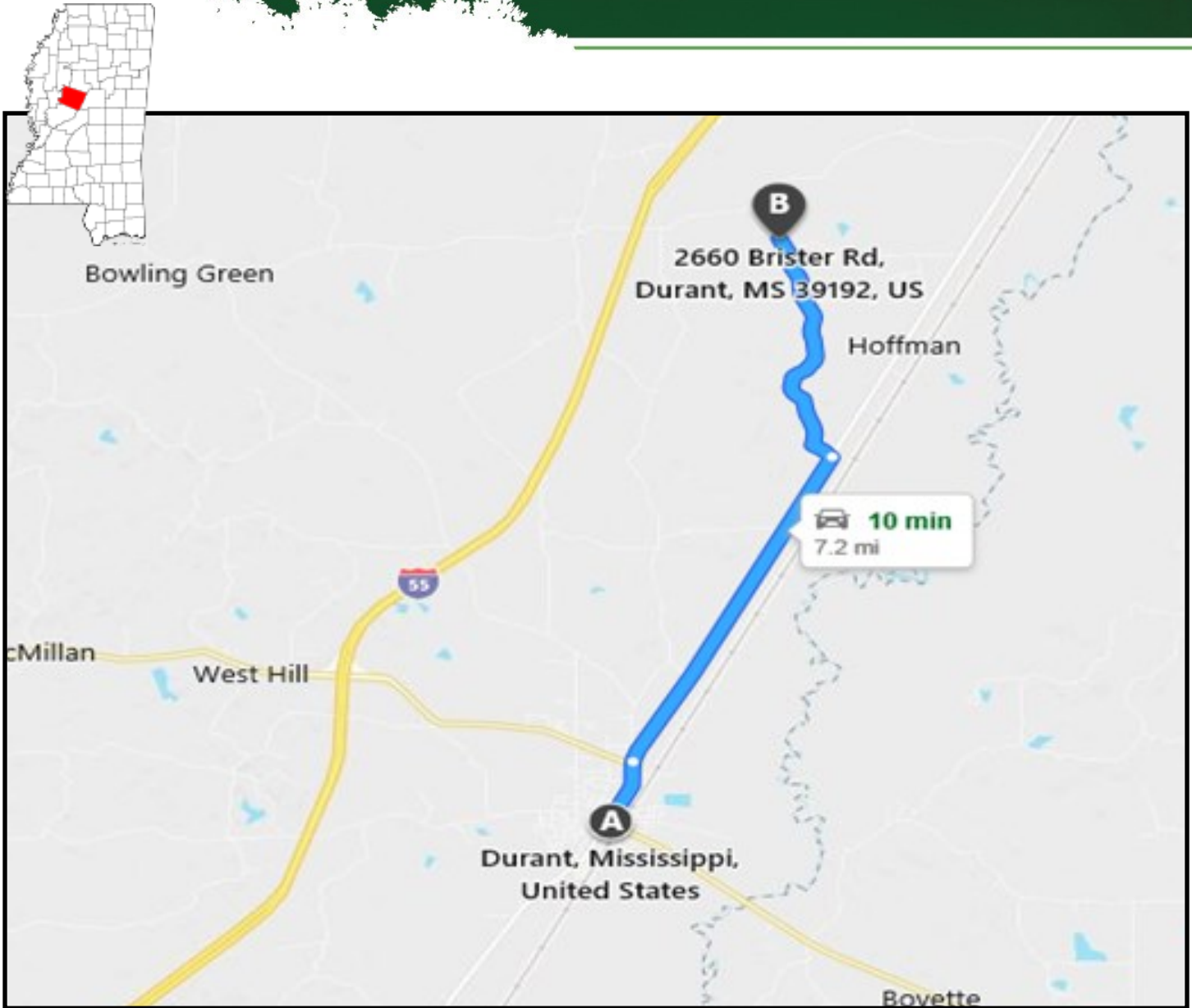


SAM SAMPLE, REALTOR®
Sam@TomSmithLand.com
601.898.2772 office | 601.668.5697 cell



TomSmithLandandHomes.com

Information is believed to be accurate but not guaranteed.



Directional Map

Directions from the intersection of HWY 12 and HWY 51 in Durant, MS: Travel north on Hwy 51 for 3.8 miles. Turn left on Brister Road and travel 2.7 miles to the property on the right. GPS: 33.1681, -89.8282



SAM SAMPLE, REALTOR®
 Sam@TomSmithLand.com
 601.898.2772 office | 601.668.5697 cell



TomSmithLandandHomes.com

Information is believed to be accurate but not guaranteed.