

# 2 +/- ACRE RESIDENTIAL LOT OKTIBBEHA COUNTY, MS



Looking to build in Oktibbeha County, MS? This 2+/- acre lot, located in the Southgate subdivision, is convenient to MS-25. This quiet, secluded lot offers scattered timber and Tobacco Juice creek just behind it. With MSU just minutes away, this is a perfect place to build the house of your dreams. HOA and Covenants apply.

Directions from the intersection of MS-25 and Old Hwy 25 in Starkville, MS: Drive straight on Old Hwy 25 for 1.2 miles. Turn right on Southgate Drive and travel 0.1 miles. Turn right on Bent Brook Drive and travel 0.2 miles; the property will be on the left.



**PRES DAWKINS**, REALTOR®  
PDawkins@TomSmithLand.com  
662.268.6333 office | 662.418.5194 cell



*call us today!*



**JOHN DEL PAPA**, REALTOR®  
John@TomSmithHomes.com  
662.268.6333 office | 662.788.2455 cell

**TomSmithLandandHomes.com**

Information is believed to be accurate but not guaranteed.







**PRES DAWKINS, REALTOR®**  
PDawkins@TomSmithLand.com  
662.268.6333 office | 662.418.5194 cell

Expect More. Get More.

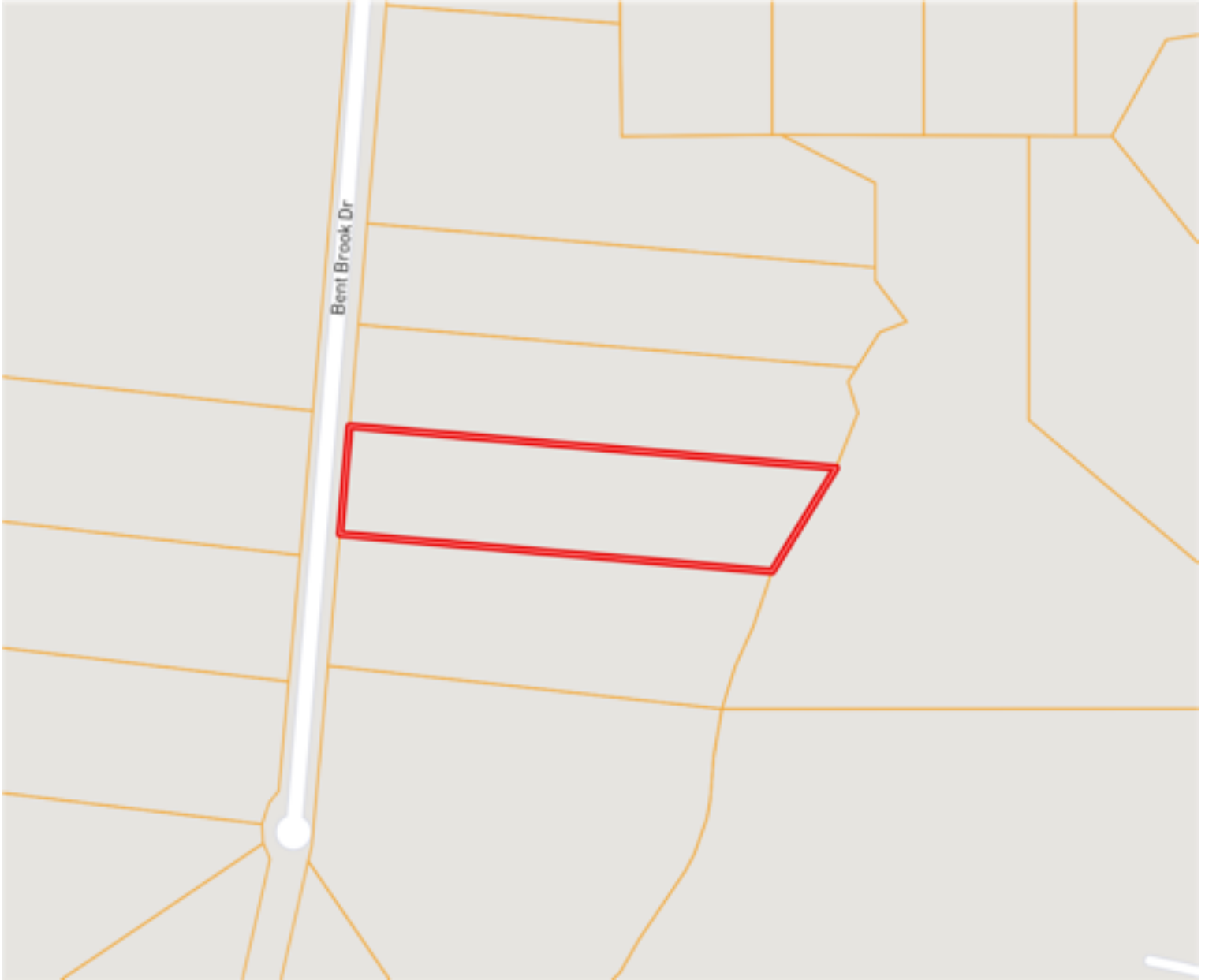
**JOHN DEL PAPA, REALTOR®**  
John@TomSmithHomes.com  
662.268.6333 office | 662.788.2455 cell

**TomSmithLandandHomes.com**

Information is believed to be accurate but not guaranteed.



# Ownership Map



**PRES DAWKINS, REALTOR®**  
PDawkins@TomSmithLand.com  
662.268.6333 office | 662.418.5194 cell

**JOHN DEL PAPA, REALTOR®**  
John@TomSmithHomes.com  
662.268.6333 office | 662.788.2455 cell

**TomSmithLandandHomes.com**

Information is believed to be accurate but not guaranteed.





# Aerial Map



Expect More. Get More.

**PRES DAWKINS**, REALTOR®  
PDawkins@TomSmithLand.com  
662.268.6333 office | 662.418.5194 cell

**JOHN DEL PAPA**, REALTOR®  
John@TomSmithHomes.com  
662.268.6333 office | 662.788.2455 cell

[TomSmithLandandHomes.com](http://TomSmithLandandHomes.com)

Information is believed to be accurate but not guaranteed.



FEMA Flood Map



**PRES DAWKINS, REALTOR®**  
PDawkins@TomSmithLand.com  
662.268.6333 office | 662.418.5194 cell

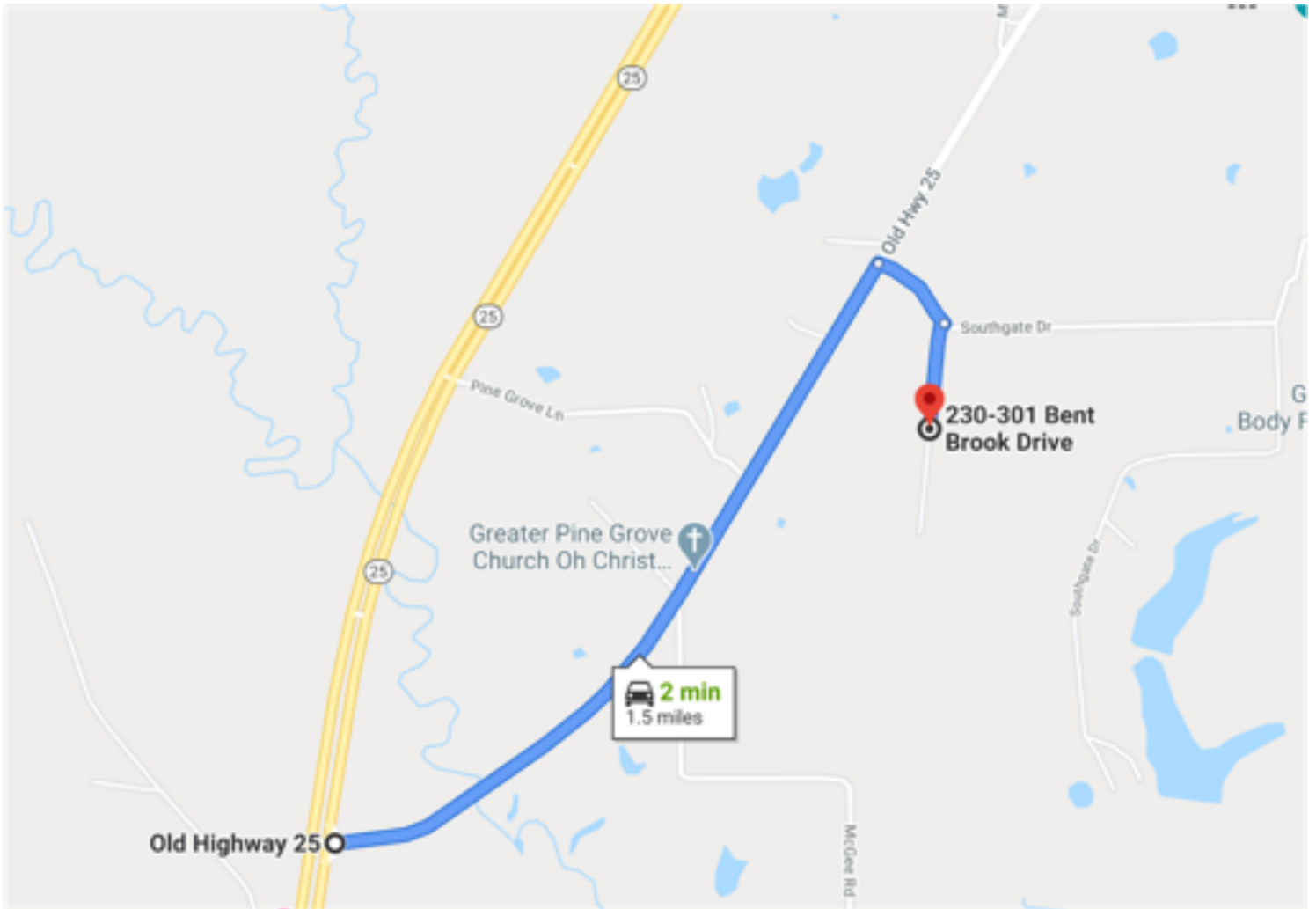
**JOHN DEL PAPA, REALTOR®**  
John@TomSmithHomes.com  
662.268.6333 office | 662.788.2455 cell

[TomSmithLandandHomes.com](http://TomSmithLandandHomes.com)

Information is believed to be accurate but not guaranteed.



## Directional Map



**Directions from the intersection of MS-25 and Old Hwy 25 in Starkville, MS: Drive straight on Old Hwy 25 for 1.2 miles. Turn right on Southgate Drive and travel 0.1 miles. Turn right on Bent Brook Drive and travel 0.2 miles; the property will be on the left.**



**PRES DAWKINS, REALTOR®**  
PDawkins@TomSmithLand.com  
662.268.6333 office | 662.418.5194 cell



*call us today!*



**JOHN DEL PAPA, REALTOR®**  
John@TomSmithHomes.com  
662.268.6333 office | 662.788.2455 cell

**TomSmithLandandHomes.com**

Information is believed to be accurate but not guaranteed.

