

# 2 +/- ACRE RESIDENTIAL LOT OKTIBBEHA COUNTY, MS



**\$31,500**



Looking to build in Oktibbeha County, MS? This 2+/- acre lot, located in the Southgate subdivision, is convenient to MS-25. This quiet, secluded lot offers scattered timber and Tobacco Juice creek just behind it. With MSU just minutes away, this is a perfect place to build the house of your dreams. HOA and Covenants apply.

*Directions from the intersection of MS-25 and Old Hwy 25 in Starkville, MS: Drive straight on Old Hwy 25 for 1.2 miles. Turn right on Southgate Drive and travel 0.1 miles. Turn right on Bent Brook Drive and travel 0.2 miles; the property will be on the left.*



**PRES DAWKINS**, REALTOR®  
PDawkins@TomSmithLand.com  
662.268.6333 office | 662.418.5194 cell



*call us today!*



**JOHN DEL PAPA**, REALTOR®  
John@TomSmithHomes.com  
662.268.6333 office | 662.788.2455 cell

**TomSmithLandandHomes.com**

information is believed to be accurate but not guaranteed.







**PRES DAWKINS, REALTOR®**  
 PDawkins@TomSmithLand.com  
 662.268.6333 office | 662.418.5194 cell

Expect More. Get More.

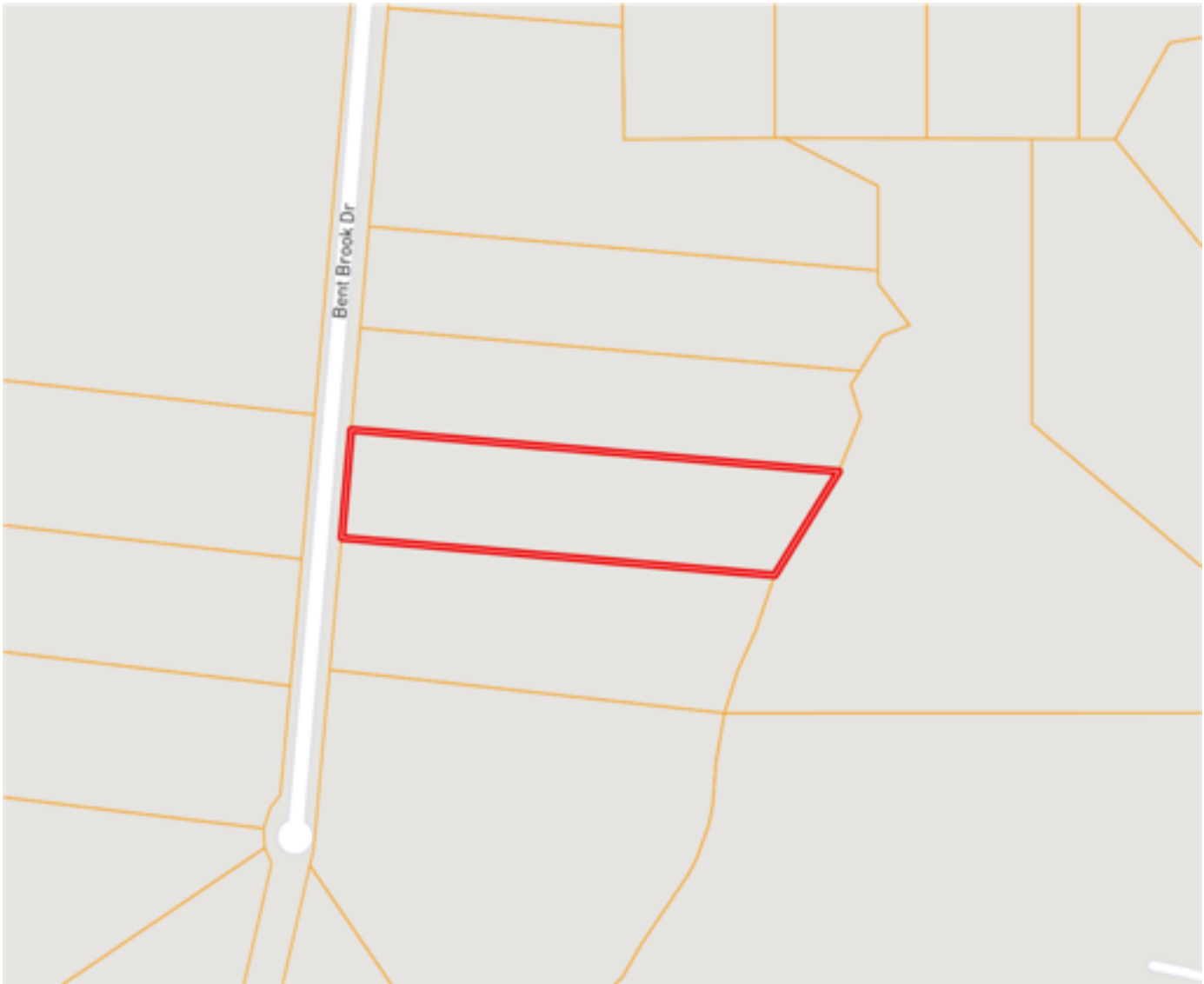
**JOHN DEL PAPA, REALTOR®**  
 John@TomSmithHomes.com  
 662.268.6333 office | 662.788.2455 cell

**TomSmithLandandHomes.com**

Information is believed to be accurate but not guaranteed.

2011-2020  
**BEST**  
 BROKERAGES

## Ownership Map



**PRES DAWKINS, REALTOR®**  
PDawkins@TomSmithLand.com  
662.268.6333 office | 662.418.5194 cell

Expect More. Get More.

**JOHN DEL PAPA, REALTOR®**  
John@TomSmithHomes.com  
662.268.6333 office | 662.788.2455 cell

# TomSmithLandandHomes.com

Information is believed to be accurate but not guaranteed.





## Aerial Map



**PRES DAWKINS, REALTOR®**  
PDawkins@TomSmithLand.com  
662.268.6333 office | 662.418.5194 cell

Expect More. Get More.

**JOHN DEL PAPA, REALTOR®**  
John@TomSmithHomes.com  
662.268.6333 office | 662.788.2455 cell

# TomSmithLandandHomes.com

Information is believed to be accurate but not guaranteed.



## FEMA Flood Map



**PRES DAWKINS, REALTOR®**  
PDawkins@TomSmithLand.com  
662.268.6333 office | 662.418.5194 cell

Expect More. Get More.

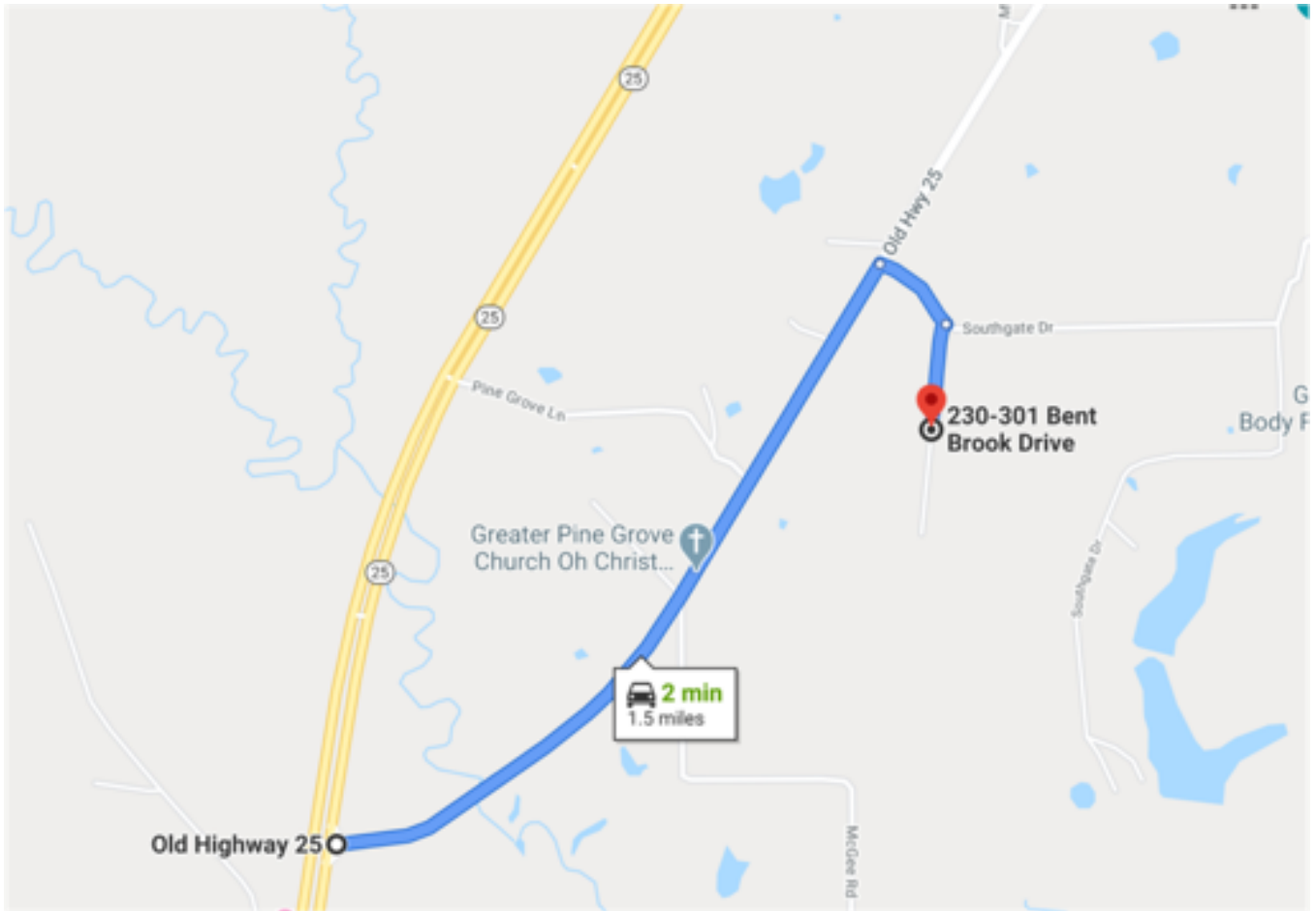
**JOHN DEL PAPA, REALTOR®**  
John@TomSmithHomes.com  
662.268.6333 office | 662.788.2455 cell

# TomSmithLandandHomes.com

Information is believed to be accurate but not guaranteed.



## Directional Map



**Directions from the intersection of MS-25 and Old Hwy 25 in Starkville, MS:** Drive straight on Old Hwy 25 for 1.2 miles. Turn right on Southgate Drive and travel 0.1 miles. Turn right on Bent Brook Drive and travel 0.2 miles; the property will be on the left.



**PRES DAWKINS**, REALTOR®  
PDawkins@TomSmithLand.com  
662.268.6333 office | 662.418.5194 cell



*call us today!*



**JOHN DEL PAPA**, REALTOR®  
John@TomSmithHomes.com  
662.268.6333 office | 662.788.2455 cell

**TomSmithLandandHomes.com**

Information is believed to be accurate but not guaranteed.

