

## 2.35+/- Acre Lot in West Lincoln School District

Lincoln County, MS



\$20,000

Have you been searching for a beautiful location to build your dream home? Look no further than this charming subdivision in the West Lincoln School District in Lincoln County, MS. This 2+/- acre lot is located in the Arlington community of Bogue Chitto and is waiting for your new home.

Covenants do apply including minimum 1,500 square feet and no mobile homes. Pick your contractor or seller may build. Call Blake today for a personal tour.



Directions from I-55 Exit 30 in Bogue Chitto, MS:  
Travel west on Bogue Chitto Road for 4.5 miles.

Turn right onto Arlington Drive and in approximately 100ft turn left onto Spencer. The property will be on the right.



*call me today!*

**BLAKE SASSER**, REALTOR®  
Blake@TomSmithLand.com  
601.990.5070 office | 601-757-5027 cell



**TomSmithLandandHomes.com**

Information is believed to be accurate but not guaranteed.





**BLAKE SASSER**, REALTOR®  
 Blake@TomSmithLand.com  
 601.990.5070 office | 601-757-5027 cell

**TomSmithLandandHomes.com**

Information is believed to be accurate but not guaranteed.





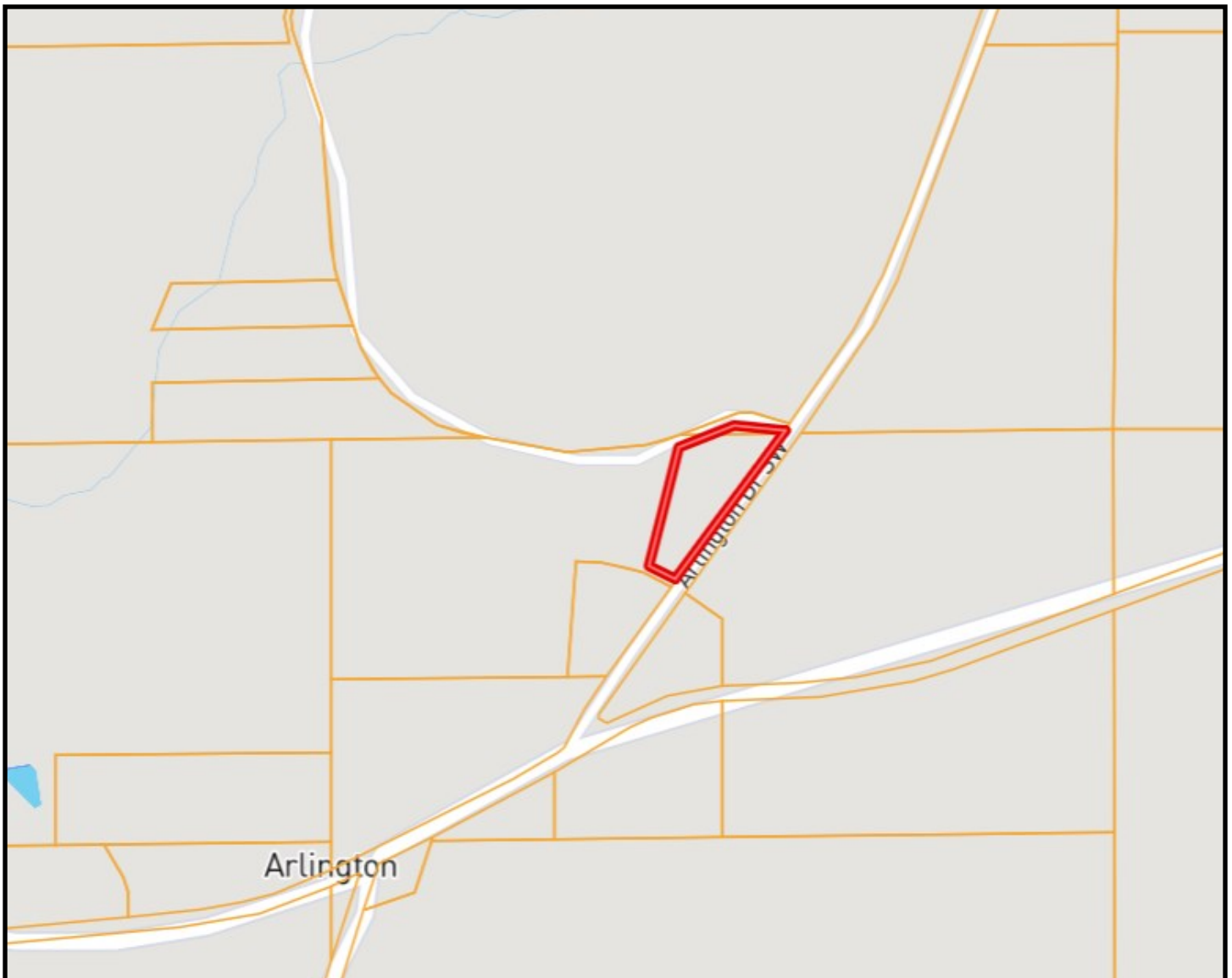
## Aerial Map



**BLAKE SASSER**, REALTOR®  
Blake@TomSmithLand.com  
601.990.5070 office | 601-757-5027 cell

**TomSmithLandandHomes.com**

Information is believed to be accurate but not guaranteed.



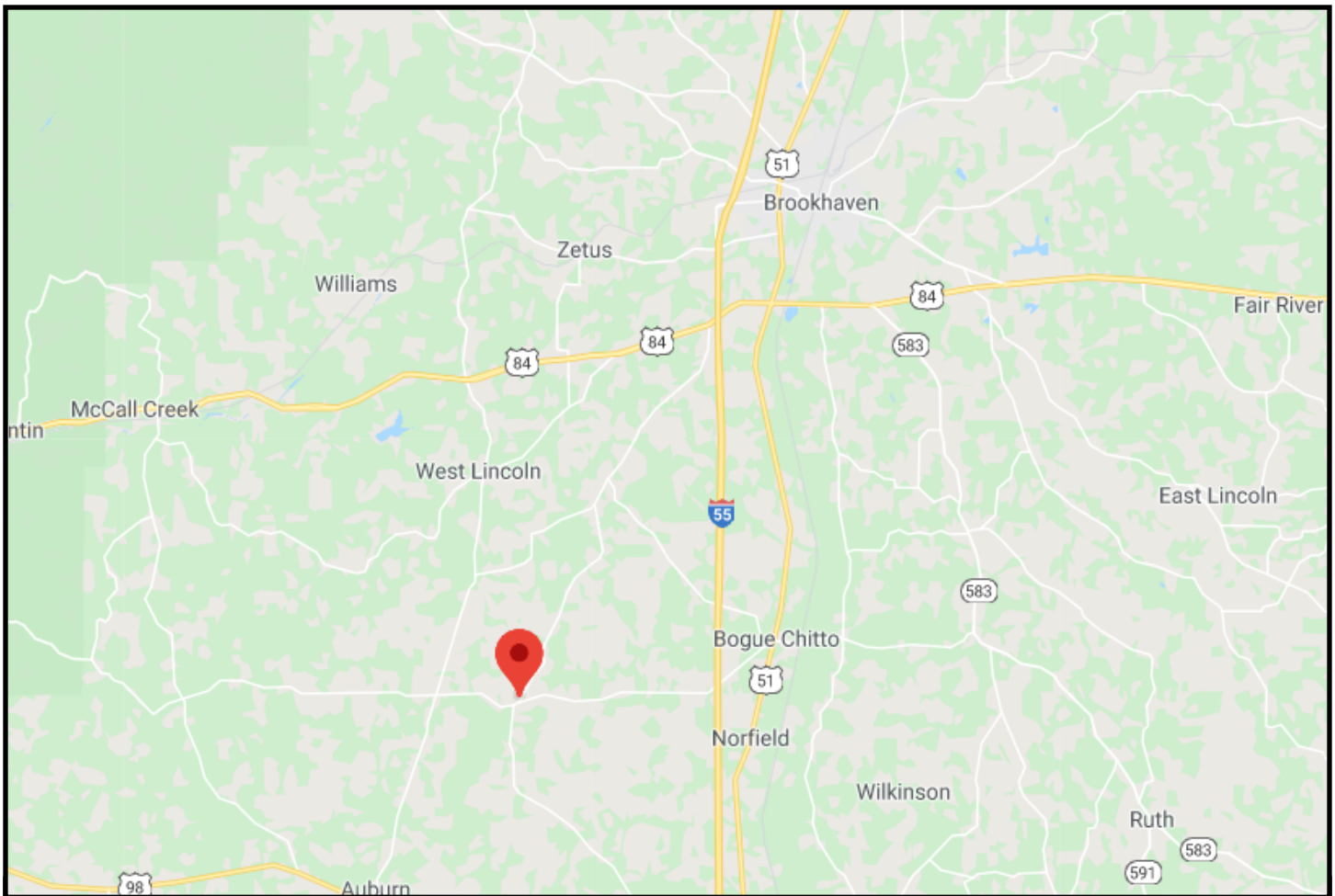
## Ownership Map



**BLAKE SASSER**, REALTOR®  
Blake@TomSmithLand.com  
601.990.5070 office | 601-757-5027 cell

**TomSmithLandandHomes.com**

Information is believed to be accurate but not guaranteed.



## Directional Map

Directions from I-55 Exit 30 in Bogue Chitto, MS: Travel west on Bogue Chitto Road for 4.5 miles. Turn right onto Arlington Drive and in approximately 100ft turn left onto Spencer. The property will be on the right.



**BLAKE SASSER**, REALTOR®  
Blake@TomSmithLand.com  
601.990.5070 office | 601-757-5027 cell



**TomSmithLandandHomes.com**

Information is believed to be accurate but not guaranteed.