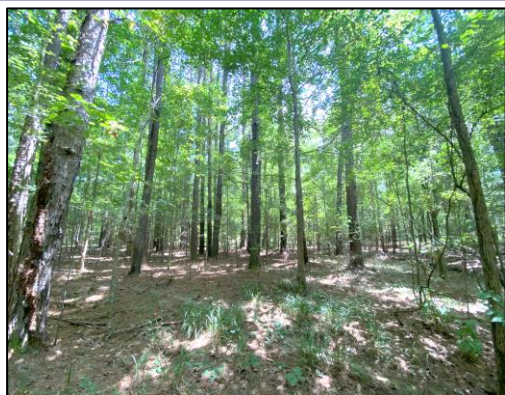


89.46± Acre Development Tract in Byram Hinds County, MS



- Development Opportunities
- Frontage on Siwell Road in Byram, MS
- Secondary Entrance Behind Gary Estates
- Beautiful Timber Throughout
- Quick Access to I-55
- Zoned Residential Estate District

Directions From I-55: Take exit 85 for Byram, then drive west on South Siwell Road. In 1.1 miles, the property will be on your left. The property can also be accessed at the dead end of Hollow Pine Street in Gary Estates.



Call me today!

CLAY SIMMONS, REALTOR®
Clay@TomSmithHomes.com
601.898.2772 **office** | 601.672.6864 **cell**

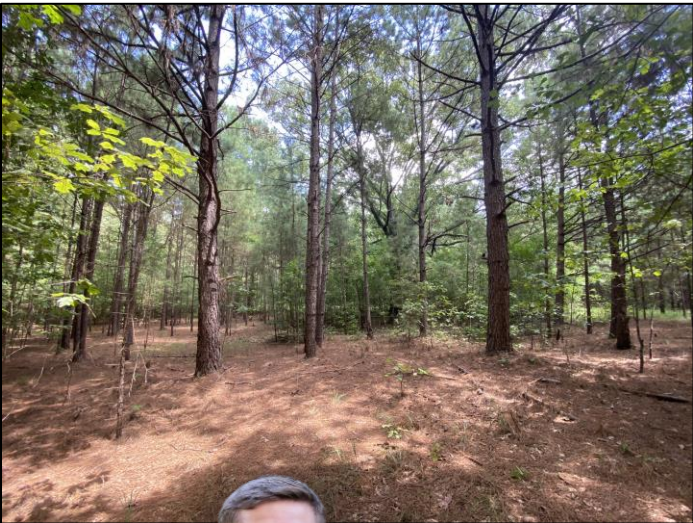


TomSmithLandandHomes.com

Information is believed to be accurate but not guaranteed.



Looking for a development opportunity or location for a family estate in the city limits of Byram, MS? This Hinds County property features 12± acres with frontage on South Siwell Road, with an additional 77± acres behind it. The entire tract is currently zoned in the Residential Estate District. The topography and property make-up offers slightly rolling terrain, hardwood timber, young pine timber and fields. This property is ideal for a family estate or the possibility of a commercial development. For more details and to schedule your private showing, call Clay Simmons today!



Call me today!

CLAY SIMMONS, REALTOR®

Clay@TomSmithHomes.com

601.898.2772 **office** | 601.672.6864 **cell**



TomSmithLandandHomes.com

Information is believed to be accurate but not guaranteed.

32.193895, -90.273013

12± Acres

77± Acres

Aerial Map

Overview Map



Call me today!

CLAY SIMMONS, REALTOR®

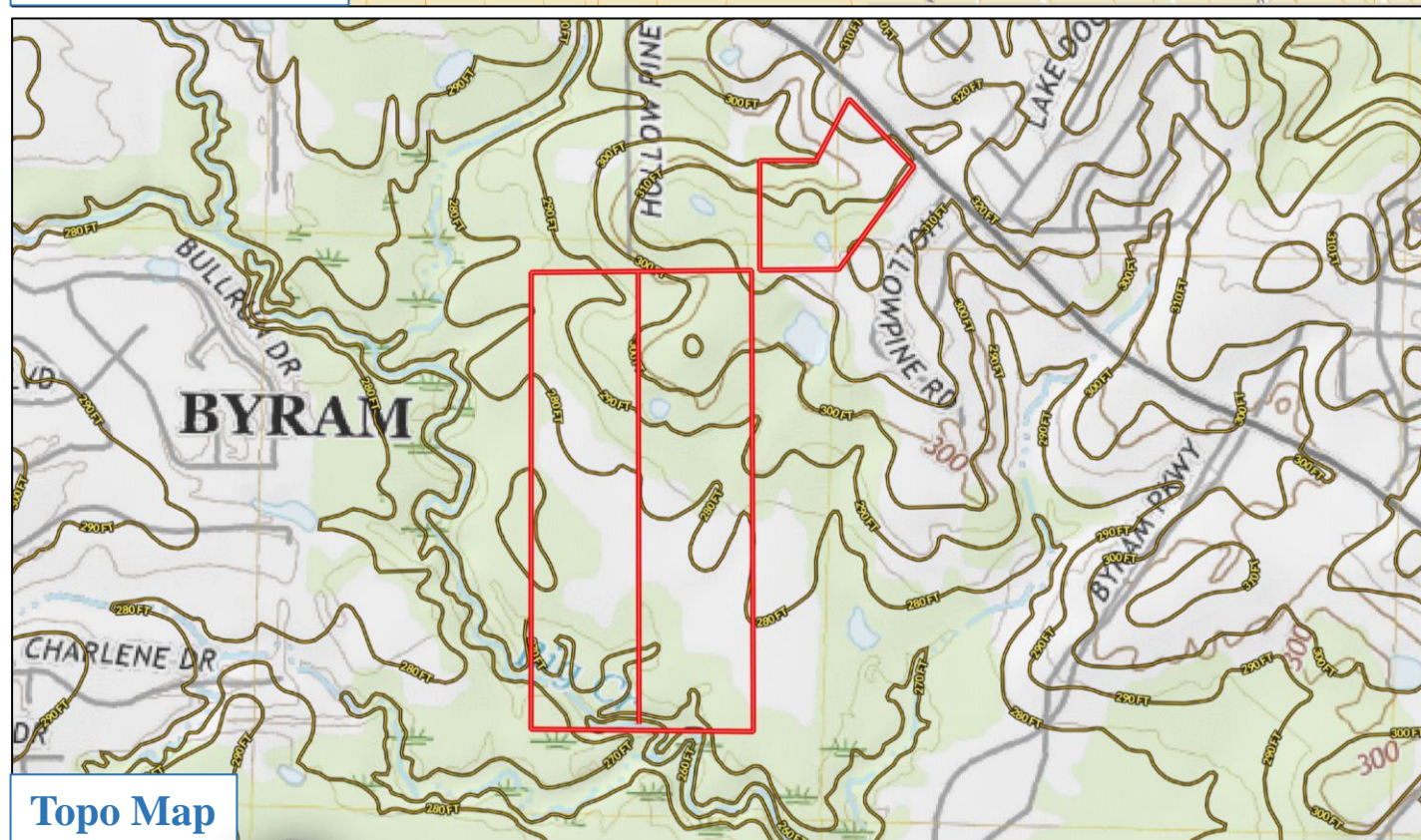
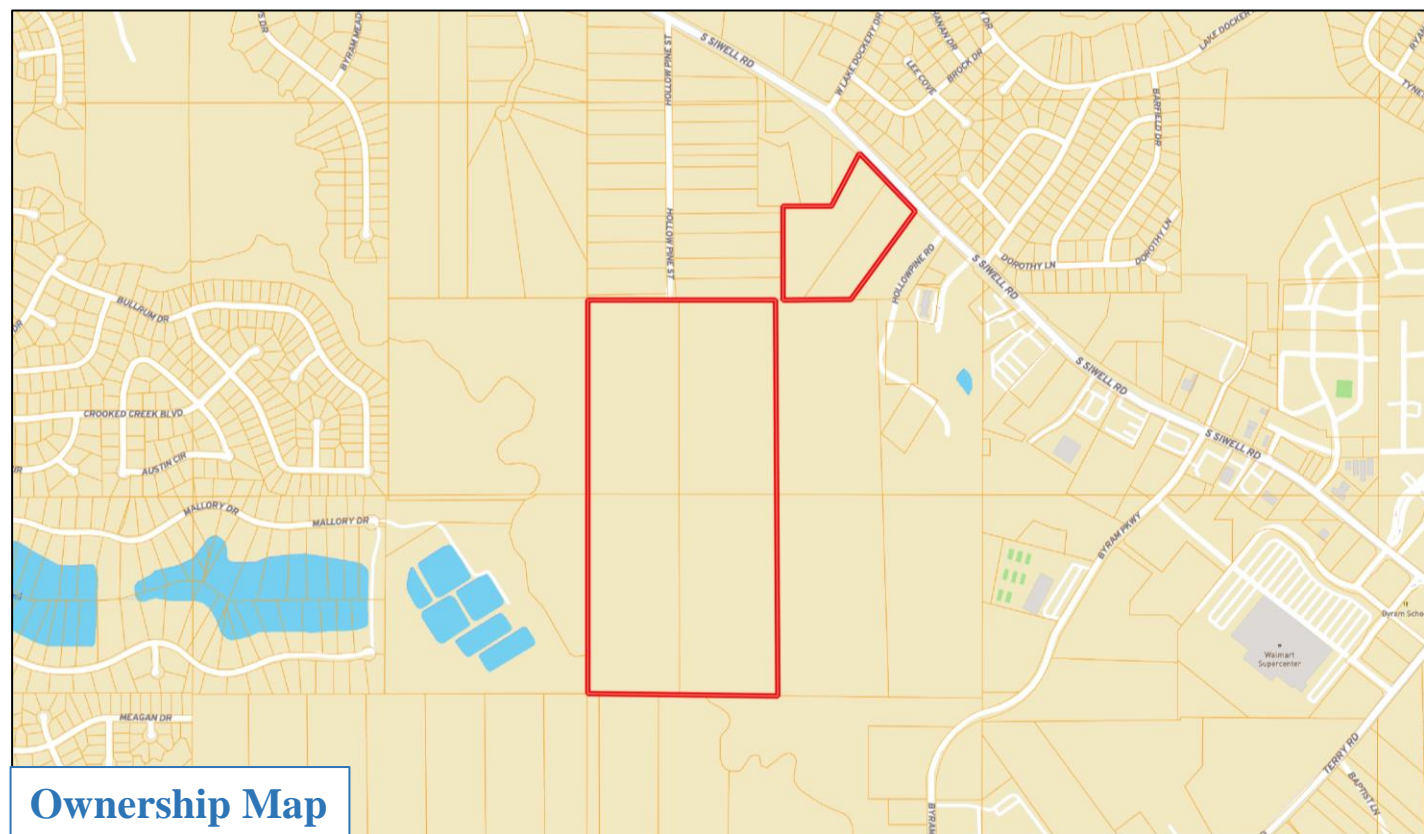
Clay@TomSmithHomes.com

601.898.2772 office | 601.672.6864 cell



TomSmithLandandHomes.com

Information is believed to be accurate but not guaranteed.



Call me today!

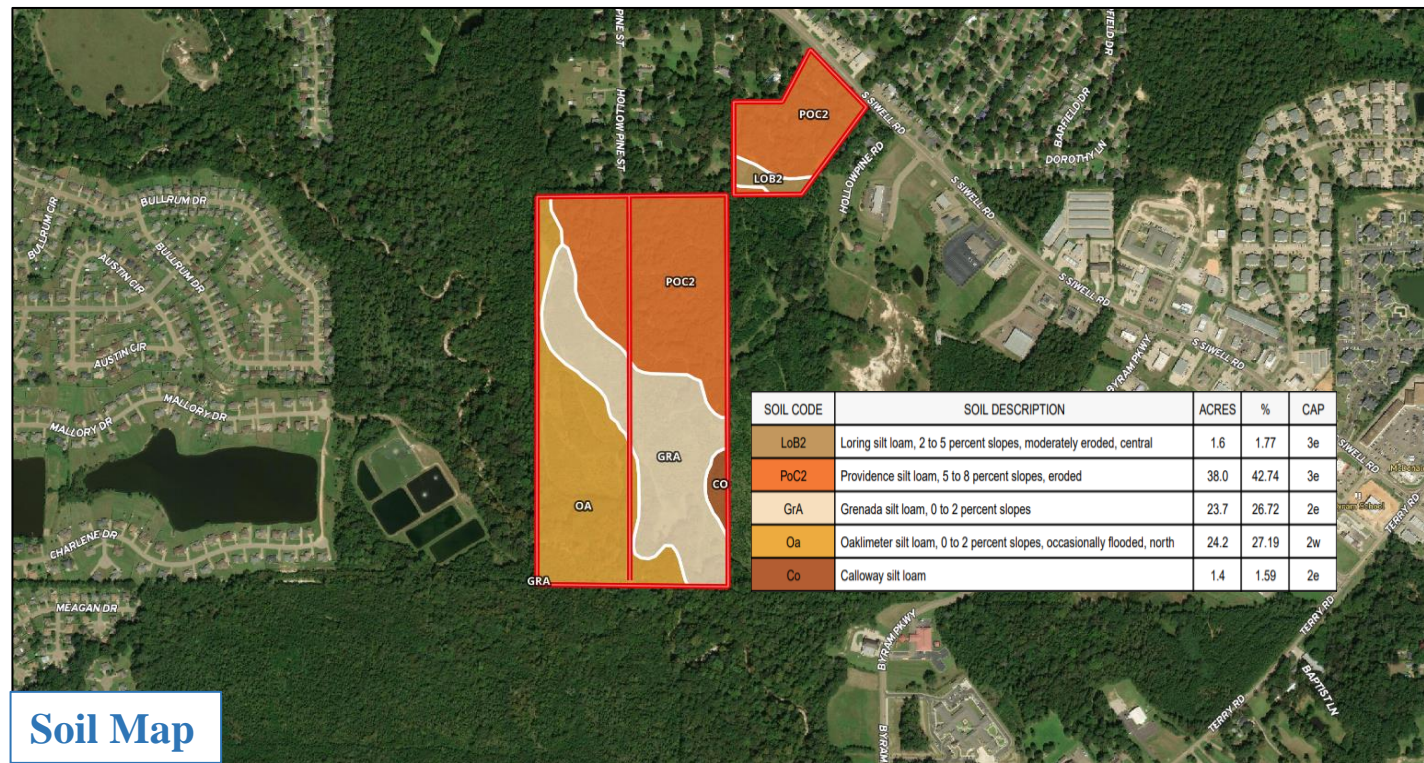
CLAY SIMMONS, REALTOR®
 Clay@TomSmithHomes.com
 601.898.2772 **office** | 601.672.6864 **cell**



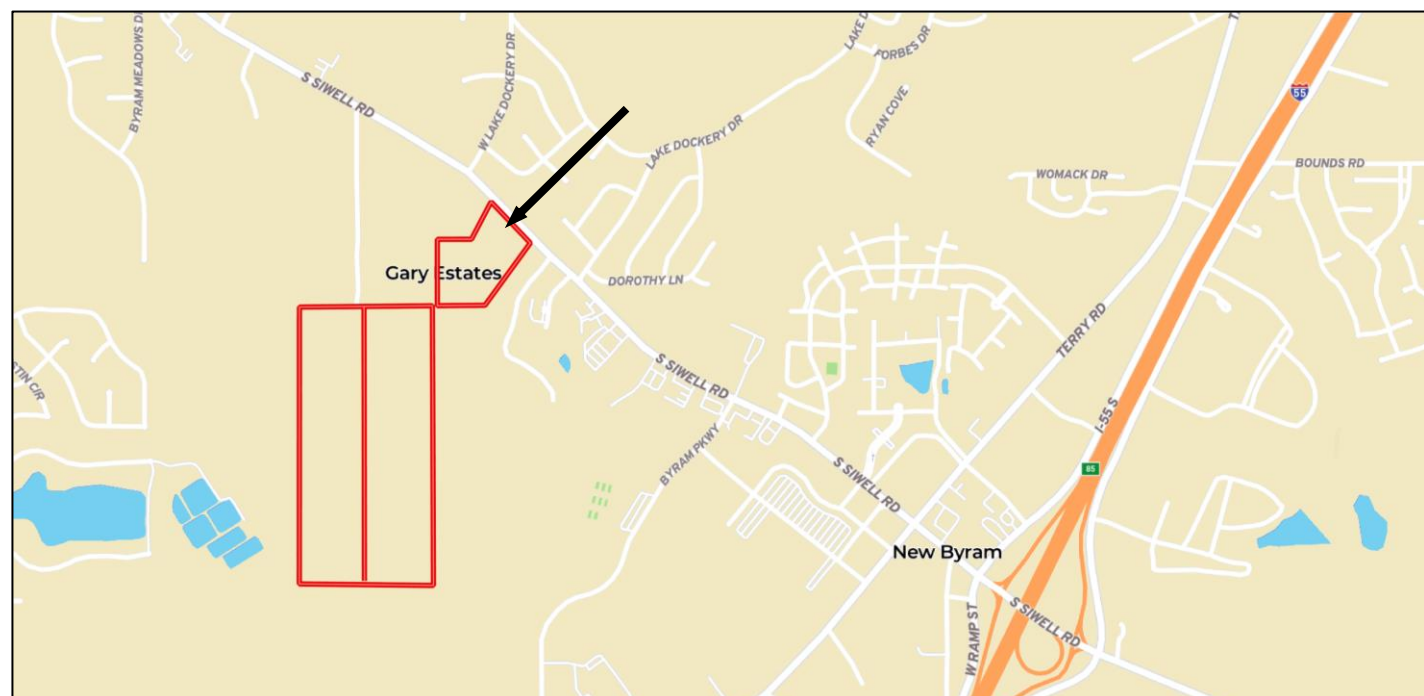
TomSmithLandandHomes.com

Information is believed to be accurate but not guaranteed.

LandReport
 2011-2021
BEST
 BROKERAGES



Soil Map



Directions From I-55: Take exit 85 for Byram, then drive west on South Siwell Road. In 1.1 miles, the property will be on your left. The property can also be accessed at the dead end of Hollow Pine Street in Gary Estates.



Call me today!

CLAY SIMMONS, REALTOR®

Clay@TomSmithHomes.com
601.898.2772 **office** | 601.672.6864 **cell**



TomSmithLandandHomes.com

Information is believed to be accurate but not guaranteed.

2011-2021
BEST
BROKERAGES