



# TIMBER INVESTMENT | HUNTING TRACT 120+/- ACRES IN LEAKE COUNTY, MS

*If you are looking for the perfect hunting tract that will also give you a return on your investment, you have just found it!* This 120+/- acre tract in Leake County, Mississippi is the perfect investment; just sit back and watch your money grow! The property consists of four age group stands of plantation pine. The property fronts Mississippi Highway 43. There is an excellent road system, established food plots as well as signs of deer and turkey population. This property is priced to SELL, so, don't drag your feet on taking a look at this property! Call Tom Smith to schedule your appointment TODAY!

**Directions From The Town Square in Canton, MS:** Travel east on W Peace Street toward N Union Street for 1.7 miles, turn left onto MS-43 N / Old Sharon Road and travel 22.7 miles, property will be on the left.

[Google Map Link](#)

**\$1,725 / ACRE**



*Call The Land Man Today!*

**TOM SMITH**, ALC®, BROKER

Tom@TomSmithLand.com

601.898.2772 **office** | 601.454.9397 **cell**

112 Village Blvd, Madison, MS 39110



Expect More. Get More.

**TomSmithLandandHomes.com**

Information is believed to be accurate but not guaranteed.



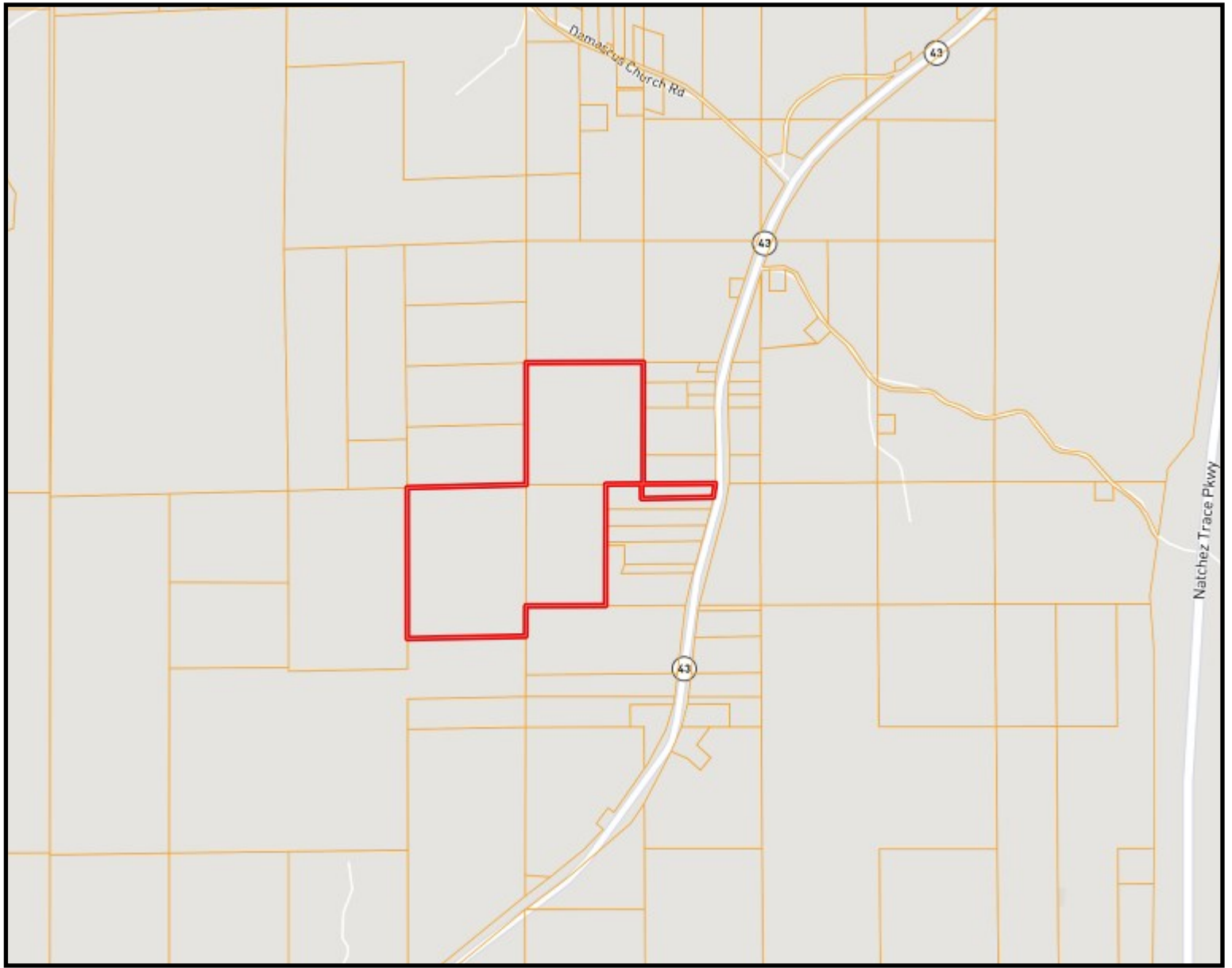
**TOM SMITH**, ALC®, BROKER  
 Tom@TomSmithLand.com  
 601.898.2772 office | 601.454.9397 cell



Expect More. Get More.

**TomSmithLandandHomes.com**

Information is believed to be accurate but not guaranteed.



# OWNERSHIP MAP



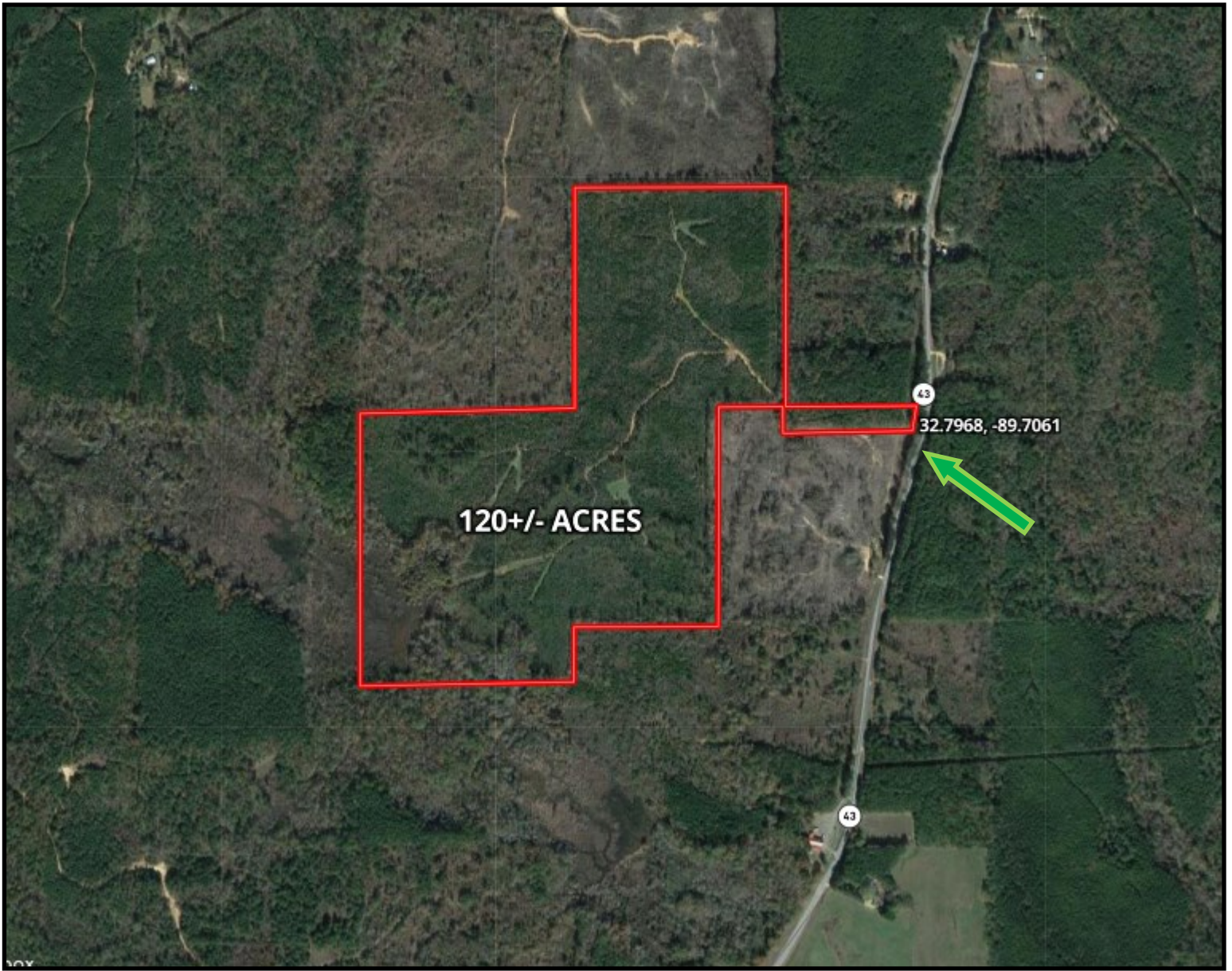
**TOM SMITH**, ALC®, BROKER  
Tom@TomSmithLand.com  
601.898.2772 office | 601.454.9397 cell



Expect More. Get More.

[TomSmithLandandHomes.com](http://TomSmithLandandHomes.com)

Information is believed to be accurate but not guaranteed.



# AERIAL MAP

[Click for Interactive Map](#)



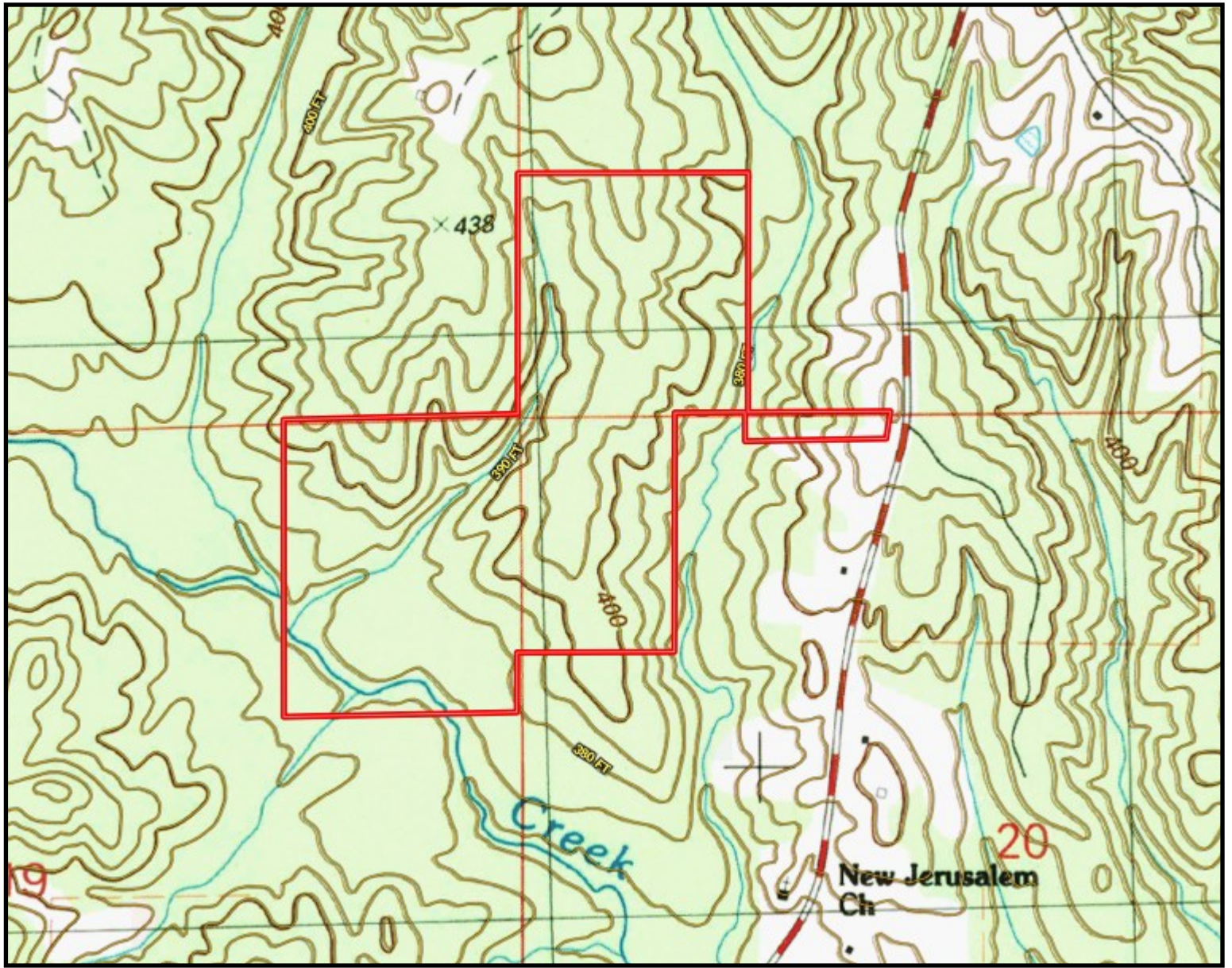
**TOM SMITH**, ALC®, BROKER  
Tom@TomSmithLand.com  
601.898.2772 **office** | 601.454.9397 **cell**



Expect More. Get More.

[TomSmithLandandHomes.com](http://TomSmithLandandHomes.com)

Information is believed to be accurate but not guaranteed.



# TOPO MAP



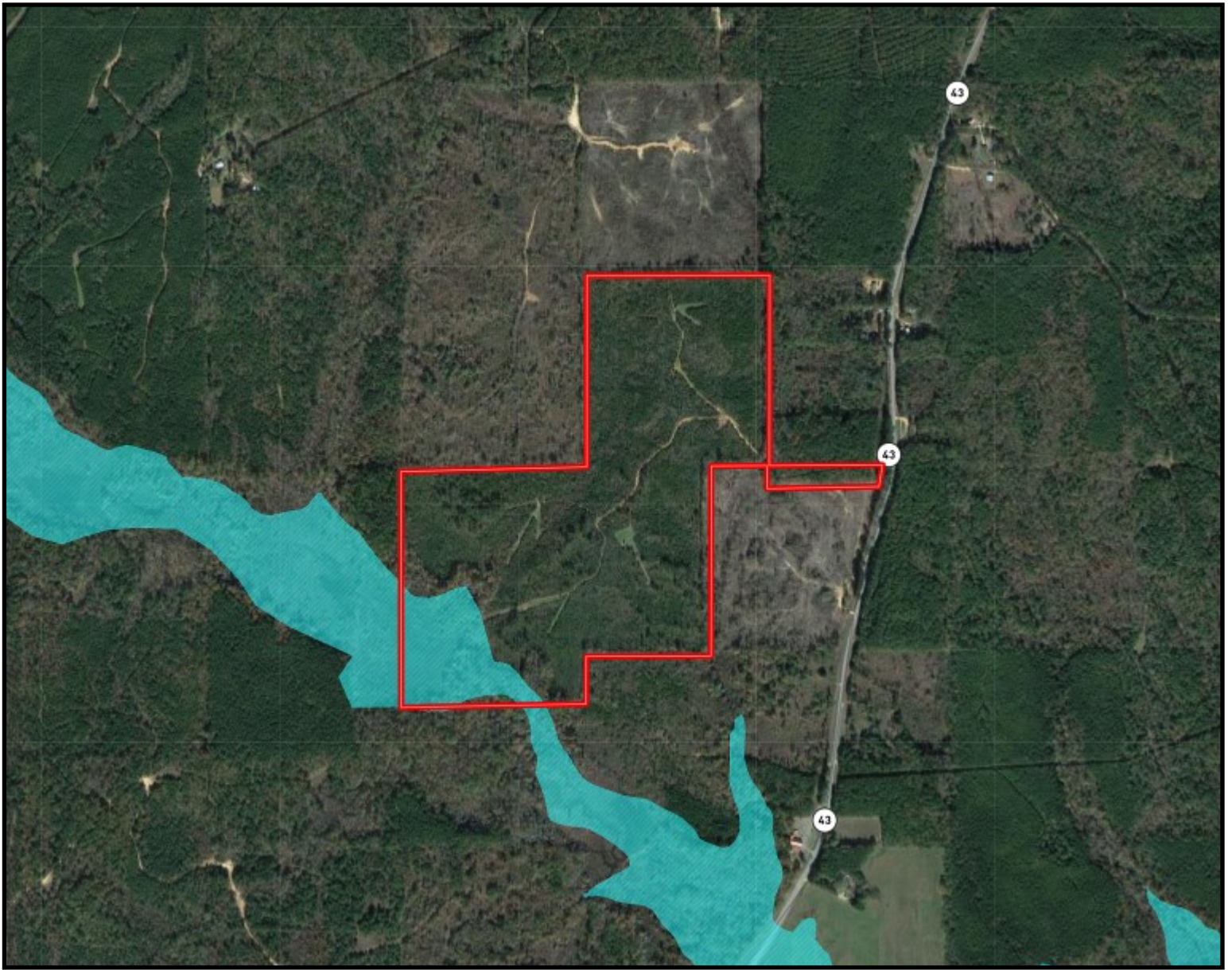
**TOM SMITH**, ALC®, BROKER  
Tom@TomSmithLand.com  
601.898.2772 office | 601.454.9397 cell



Expect More. Get More.

[TomSmithLandandHomes.com](http://TomSmithLandandHomes.com)

Information is believed to be accurate but not guaranteed.



# FLOOD MAP



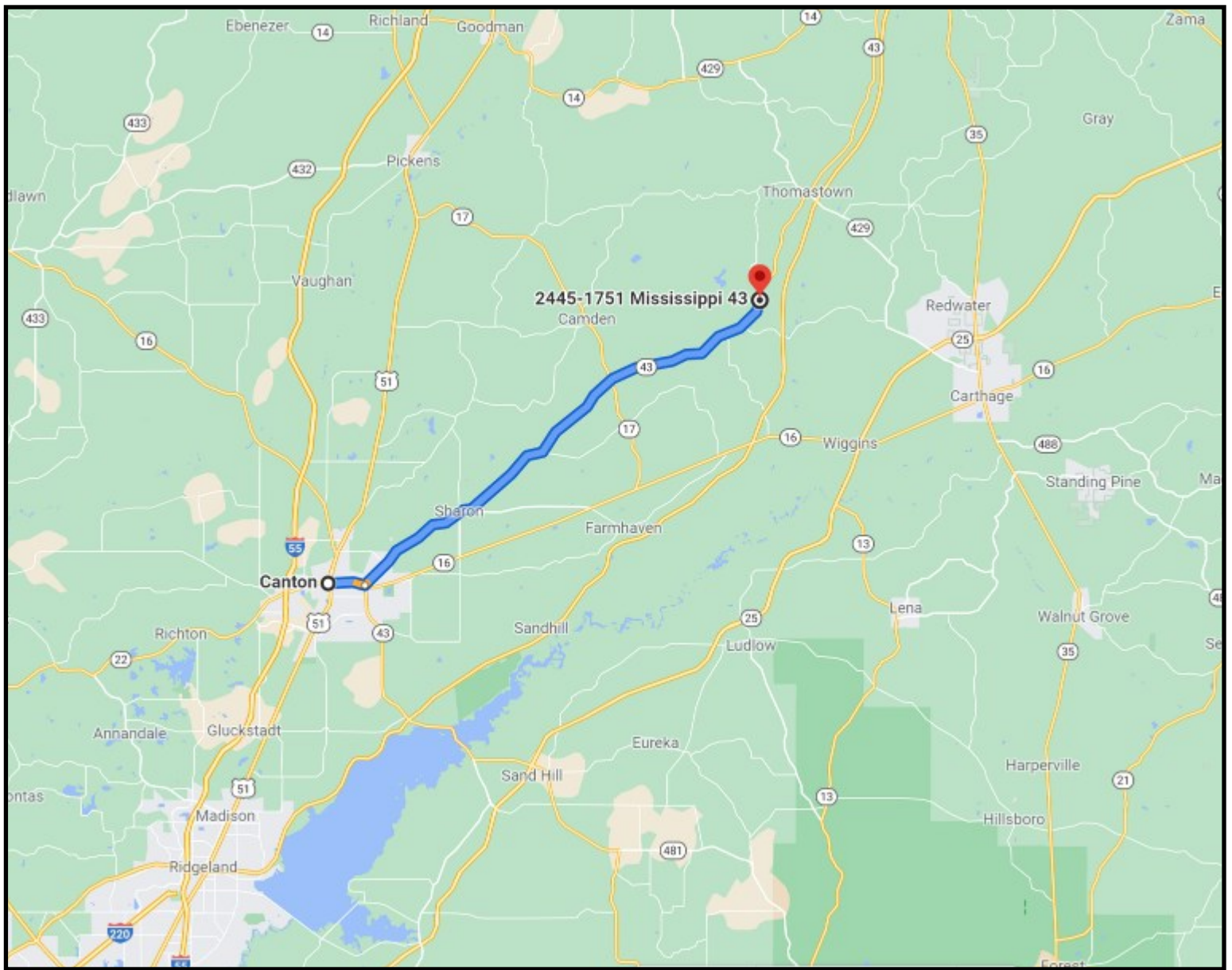
**TOM SMITH**, ALC®, BROKER  
Tom@TomSmithLand.com  
601.898.2772 **office** | 601.454.9397 **cell**



Expect More. Get More.

[TomSmithLandandHomes.com](http://TomSmithLandandHomes.com)

Information is believed to be accurate but not guaranteed.



## DIRECTIONAL MAP

**Directions From The Town Square in Canton, MS:** Travel east on W Peace Street toward N Union Street for 1.7 miles, turn left onto MS-43 N / Old Sharon Road and travel 22.7 miles, property will be on the left.

[Google Map Link](#)



*Call The Land Man Today!*

**TOM SMITH**, ALC®, BROKER  
Tom@TomSmithLand.com  
601.898.2772 **office** | 601.454.9397 **cell**

112 Village Blvd, Madison, MS 39110



Expect More. Get More.

**TomSmithLandandHomes.com**

Information is believed to be accurate but not guaranteed.