

# Timber Investment | Hunting Tract 152+/- Acres in Leake County, MS

*If you are looking for the perfect hunting tract that will also give you a return on your Investment, you have just found it!* This 152+/- acre tract in Leake County, Mississippi is the perfect investment; just sit back and watch your money grow! The property consists of four age group stands of plantation pine. The property fronts Mississippi Highway 43. There is an excellent road system, established food plots as well as signs of deer and turkey population. This property is priced to SELL, so, don't drag your feet on taking a look at this property! Call Tom Smith to schedule your appointment TODAY! Directions from town square in Canton, MS: Travel east on W Peace Street toward N Union Street for 1.7 miles, turn left onto MS-43 N/Old Sharon Road and travel 22.7 miles, property will be on the left. [Click for Google Map Link](#)

**\$1,725 / Acre**

*Call The Land Man today!*



**TOM SMITH**, ALC, BROKER®  
Tom@TomSmithLand.com  
601.898.2772 office | 601.454.9397 cell



**TomSmithLand.com**

Information is believed to be accurate but not guaranteed.





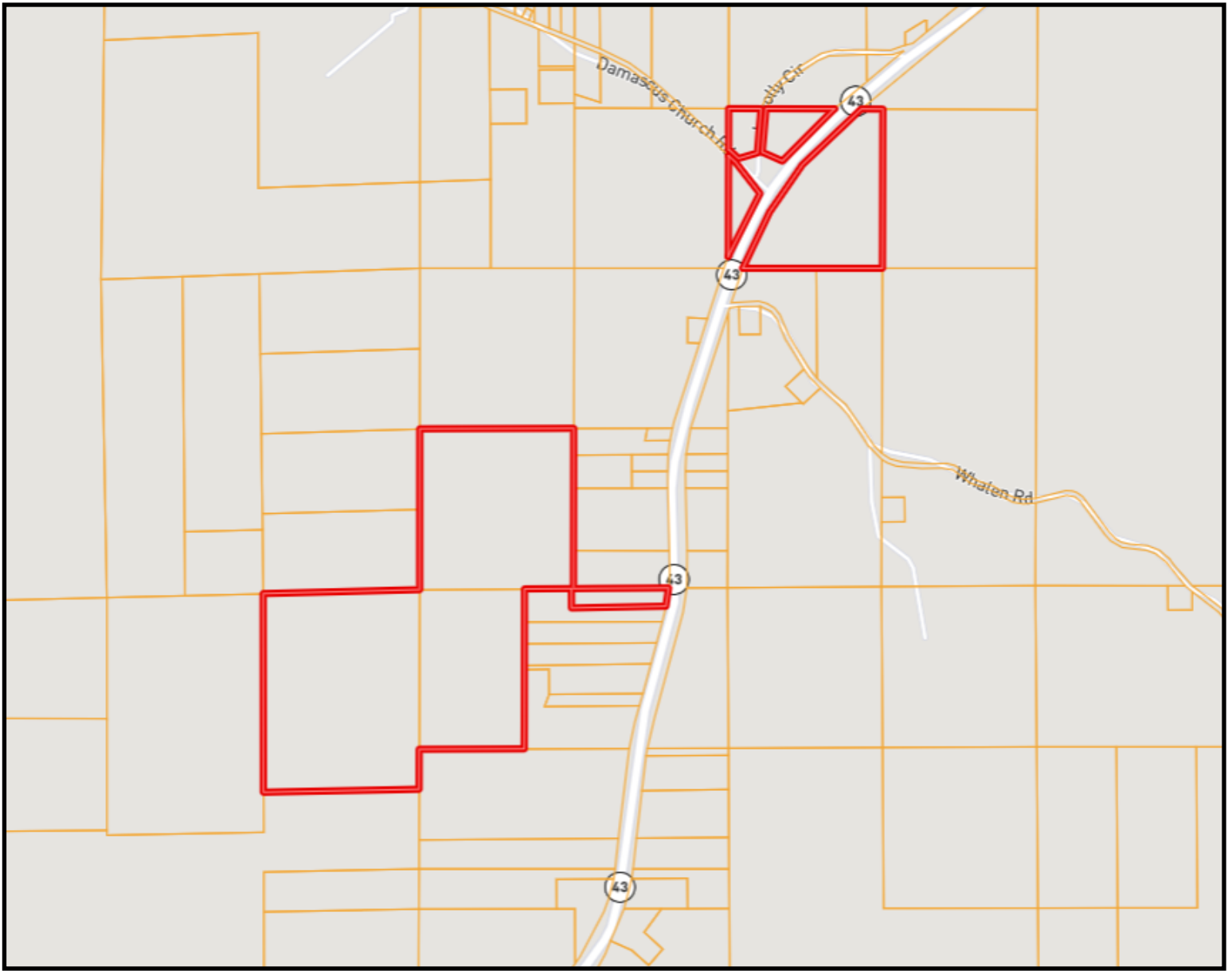
**TOM SMITH**, ALC, BROKER®  
 Tom@TomSmithLand.com  
 601.898.2772 office | 601.454.9397 cell



**TomSmithLand.com**

Information is believed to be accurate but not guaranteed.





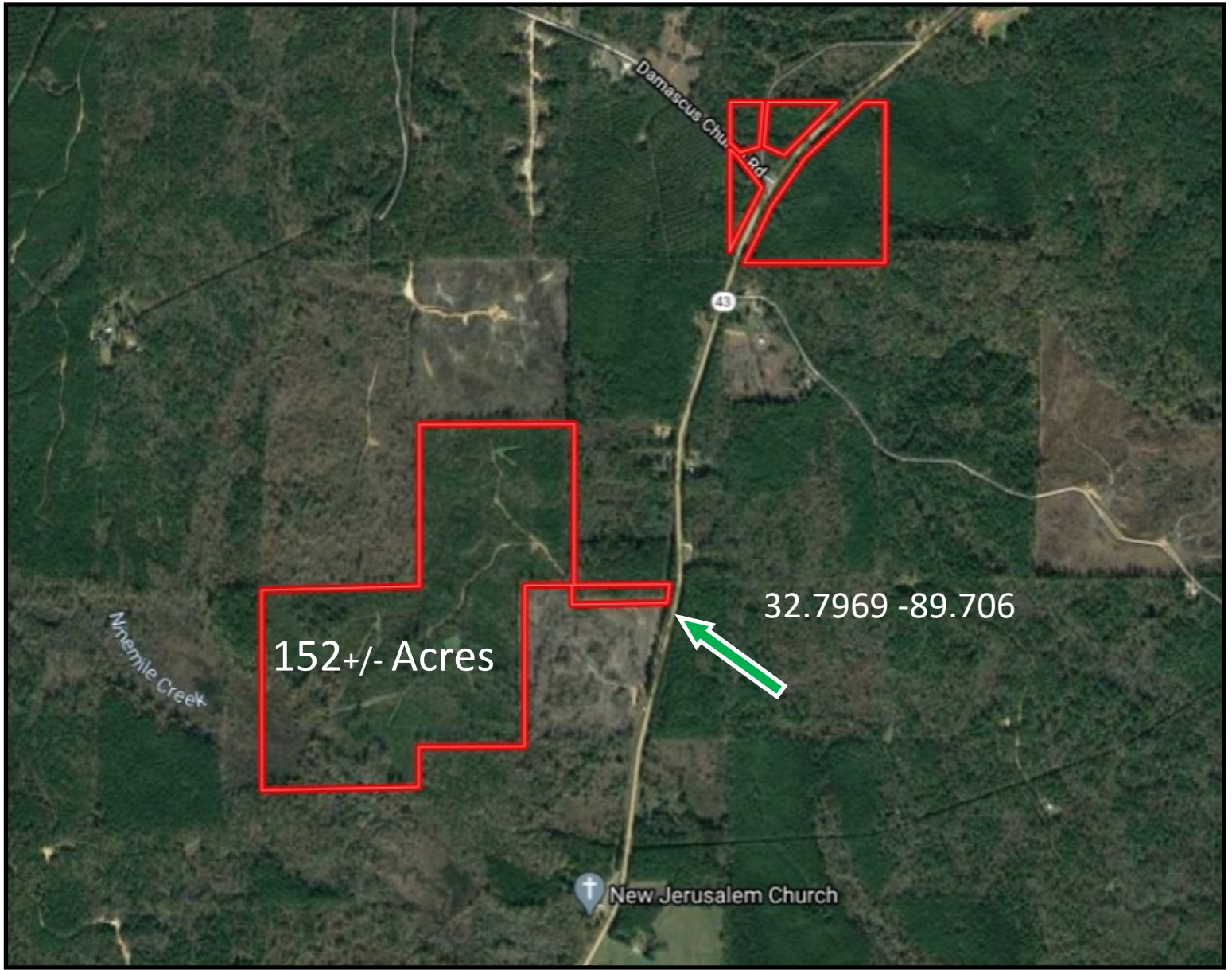
## Ownership Map

**TOM SMITH**, ALC, BROKER®  
Tom@TomSmithLand.com  
601.898.2772 office | 601.454.9397 cell



**TomSmithLand.com**

Information is believed to be accurate but not guaranteed.



## Aerial Map

[Click for Interactive Map](#)

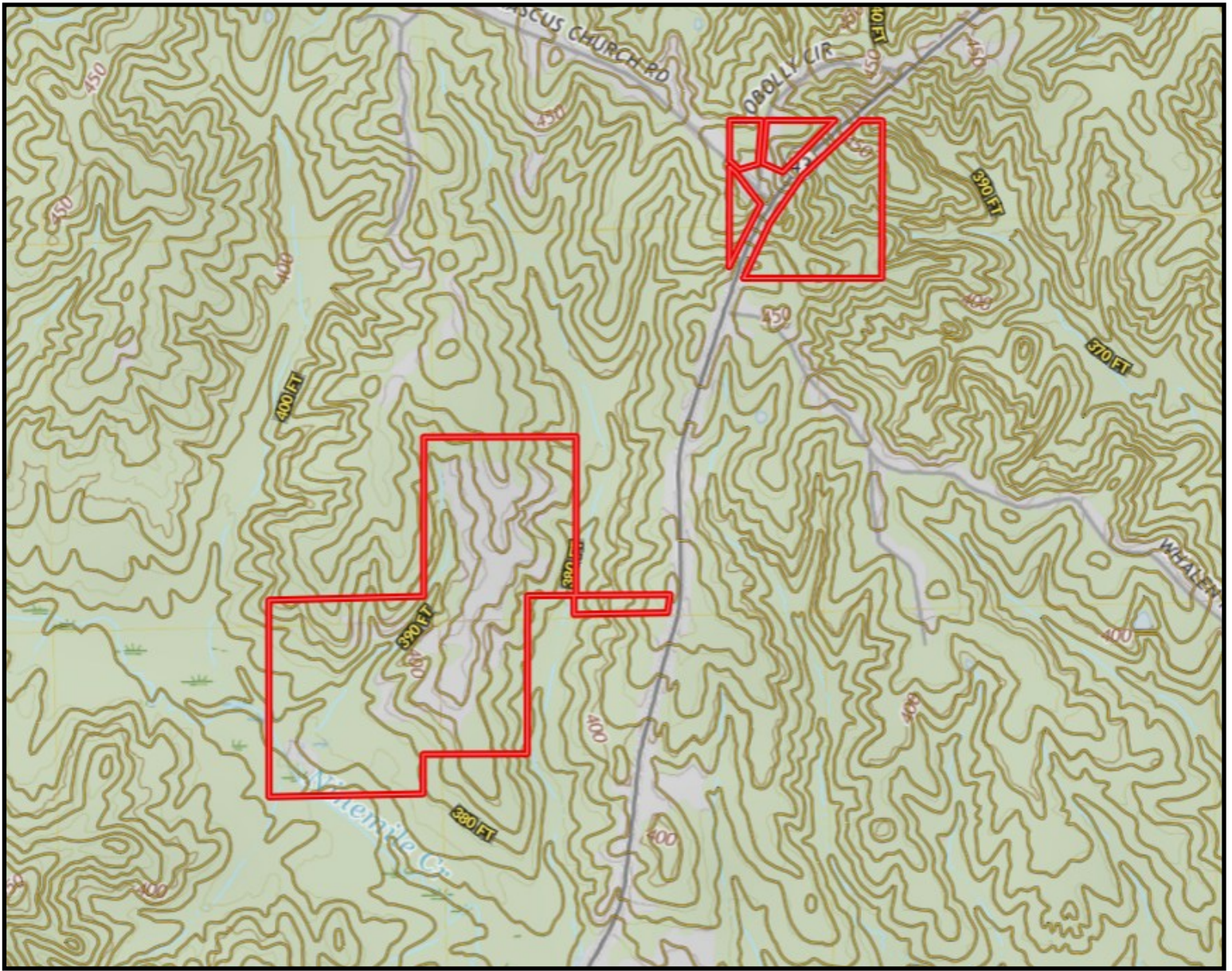
**TOM SMITH**, ALC, BROKER®  
Tom@TomSmithLand.com  
601.898.2772 office | 601.454.9397 cell



**TomSmithLand.com**

Information is believed to be accurate but not guaranteed.





## Topo Map

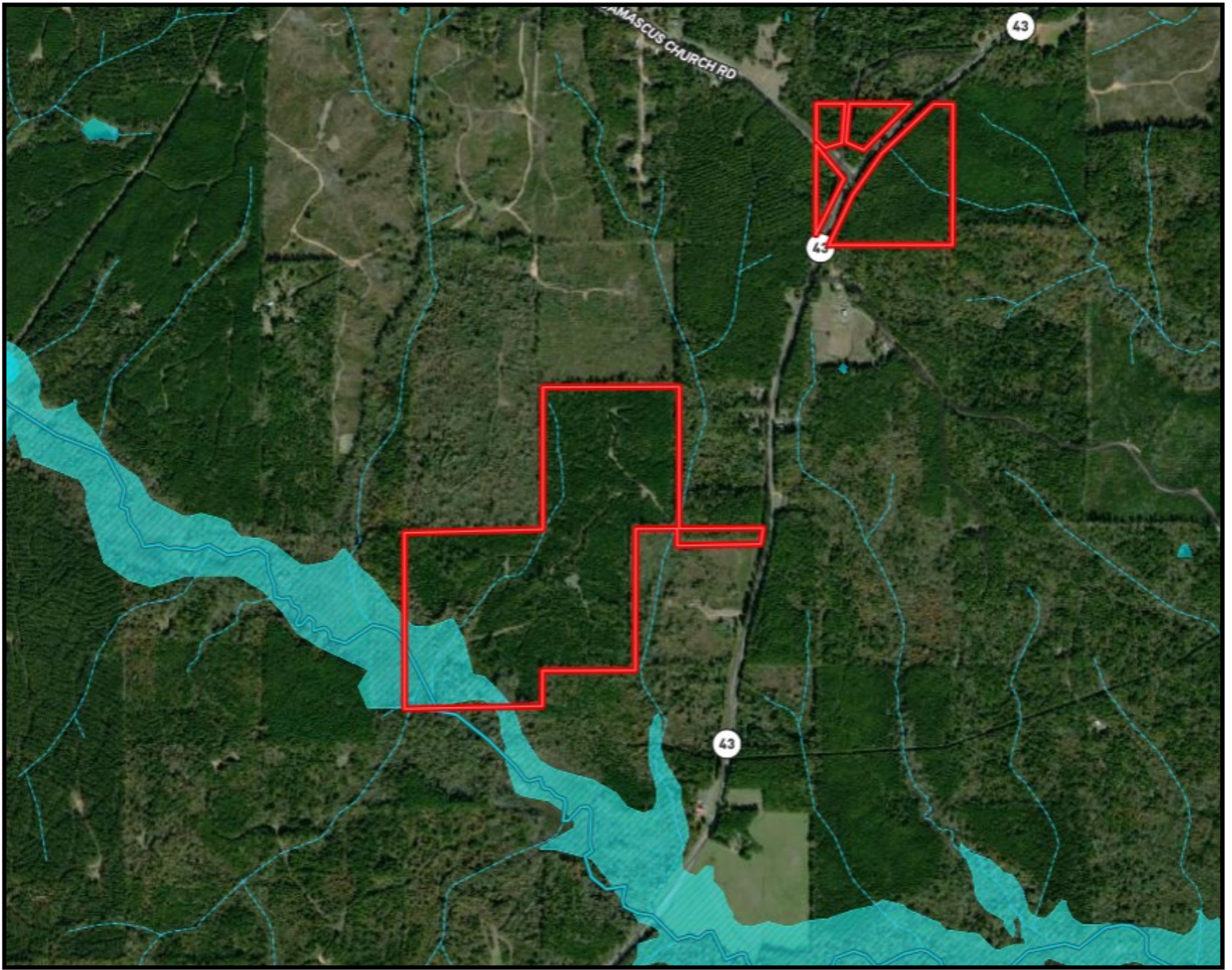
**TOM SMITH**, ALC, BROKER®  
 Tom@TomSmithLand.com  
 601.898.2772 office | 601.454.9397 cell



**TomSmithLand.com**

Information is believed to be accurate but not guaranteed.





# Flood Map

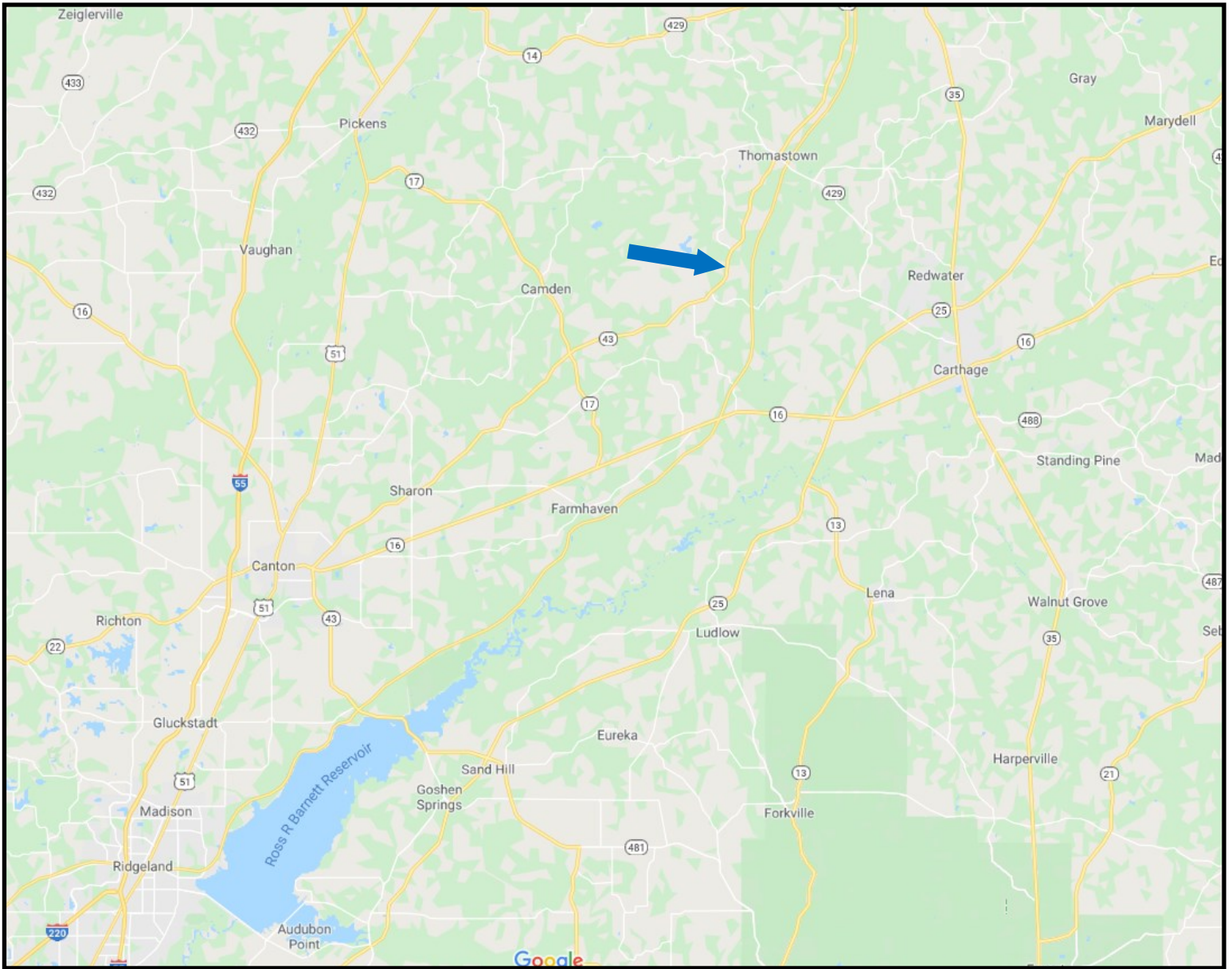
**TOM SMITH**, ALC, BROKER®  
Tom@TomSmithLand.com  
601.898.2772 office | 601.454.9397 cell



**TomSmithLand.com**

Information is believed to be accurate but not guaranteed.





## Directional Map

*Directions from town square in Canton, MS: Travel east on W Peace Street toward N Union Street for 1.7 miles, turn left onto MS-43 N / Old Sharon Road and travel 22.7 miles, property will be on the left. [Click for Google Map Link](#)*



**TOM SMITH**, ALC, BROKER®  
Tom@TomSmithLand.com  
601.898.2772 office | 601.454.9397 cell



# TomSmithLand.com

Information is believed to be accurate but not guaranteed.