

# 29.88+/- Acre Hunting Tract Newton County, MS



**\$67,230**



Have you been looking for a great deer and turkey hunting tract? This 29.88+/- acre tract in Newton County, MS is it! The property features a creek, a good stand of hardwood timber, an internal road system and multiple home or camp sites. Located just south of I20 in Lawrence, MS, the property offers road frontage on HWY 505, and is convenient to Jackson and Meridian. Additional acreage is available. Call Preston today to schedule a viewing!

Directions from I-20 E in Lawrence, MS: Take exit 100 to merge onto US-80 E. Travel 3.3 miles. Turn right onto MS-505 S. Travel 5.6 miles and the property will be on the left.



*Call me today!*

**PRESTON SMITH**, MANAGING BROKER  
Preston@TomSmithLand.com  
601.990.5070 office | 601.209.7150 cell



Expect More. Get More.

**TomSmithLandandHomes.com**

Information is believed to be accurate but not guaranteed.



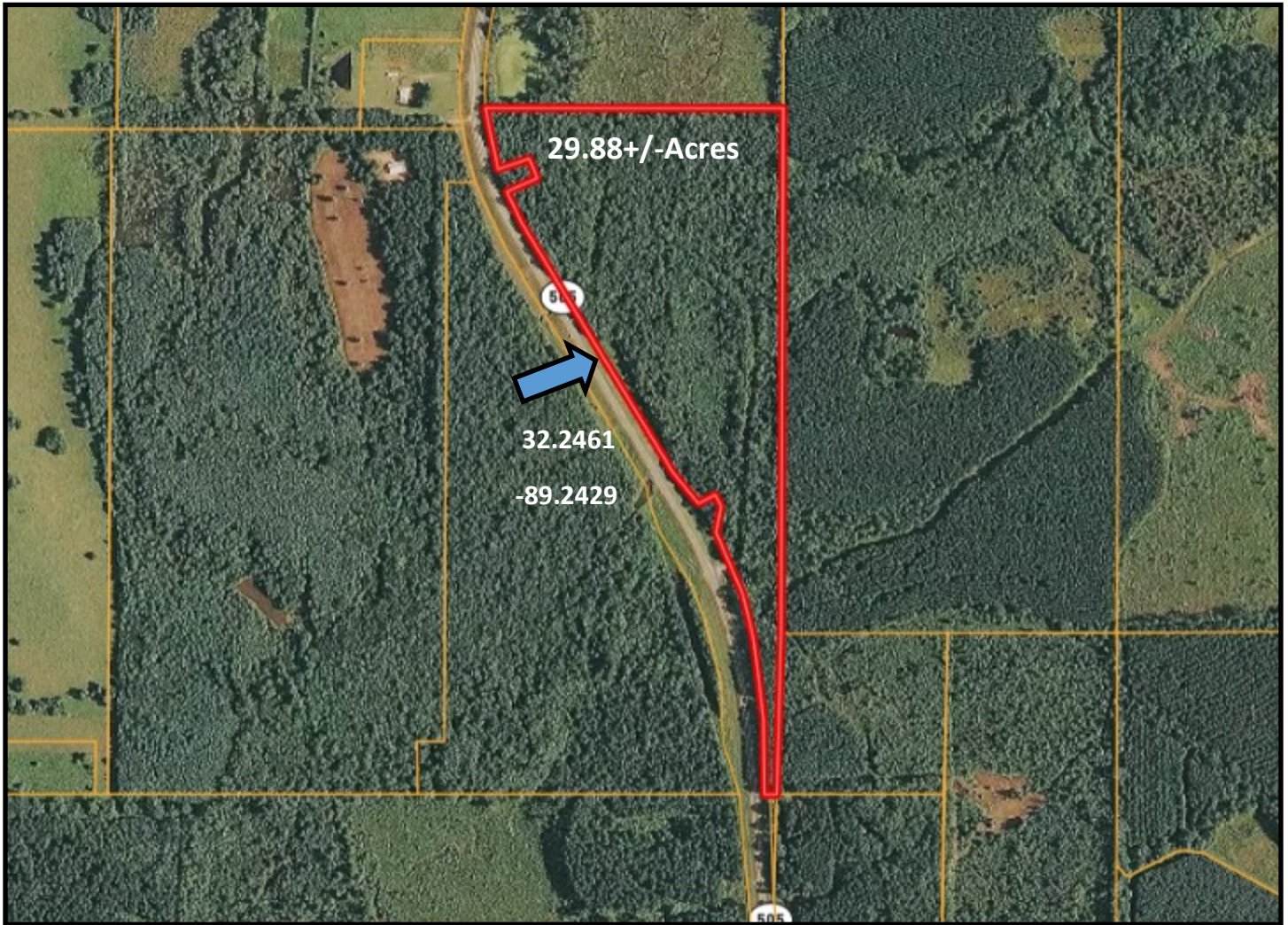
*Call me today!*

**PRESTON SMITH**, MANAGING BROKER  
Preston@TomSmithLand.com  
601.990.5070 office | 601.209.7150 cell



**TomSmithLandandHomes.com**

Information is believed to be accurate but not guaranteed.



Aerial Map



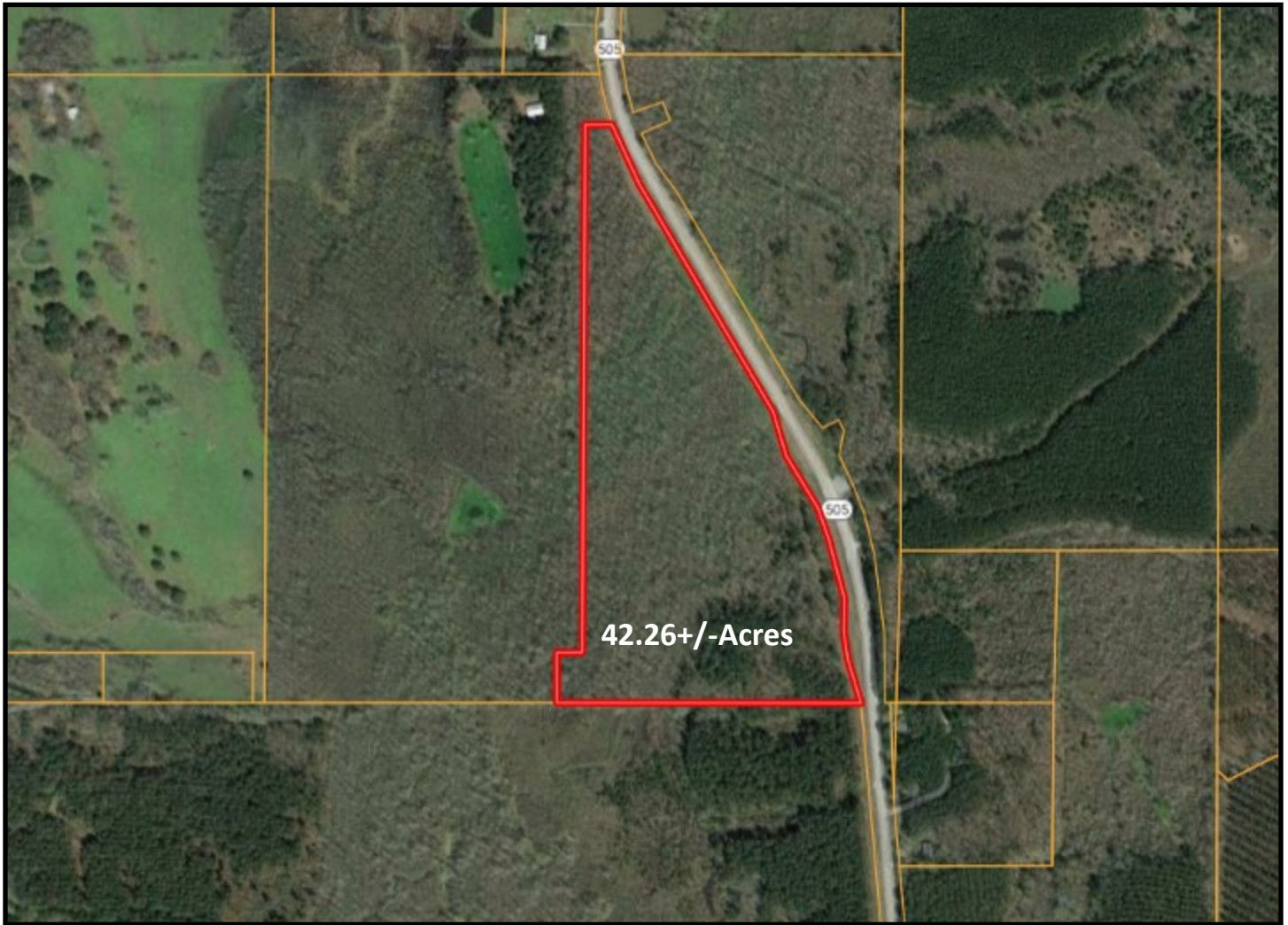
*call me today!*

**PRESTON SMITH**, MANAGING BROKER  
Preston@TomSmithLand.com  
601.990.5070 office | 601.209.7150 cell



**TomSmithLandandHomes.com**

Information is believed to be accurate but not guaranteed.



Additional Land Available



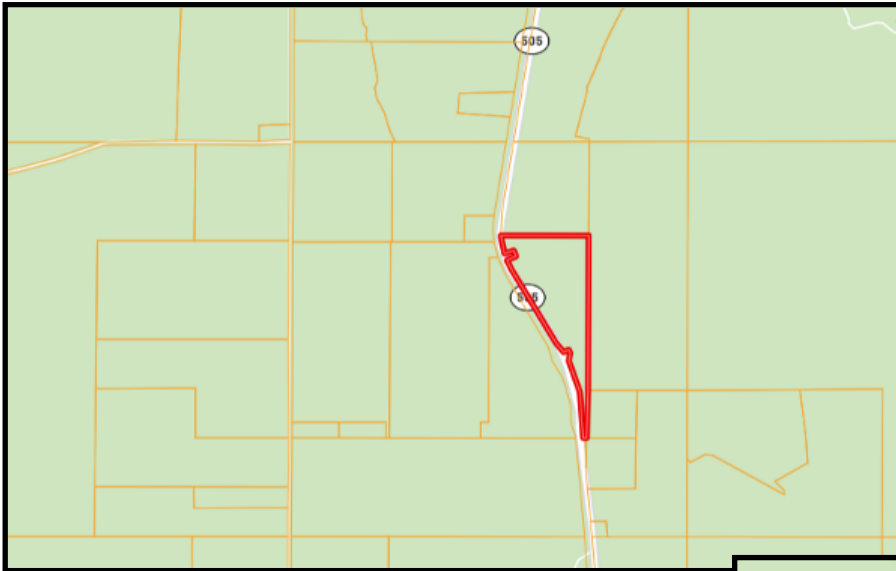
*call me today!*

**PRESTON SMITH**, MANAGING BROKER  
Preston@TomSmithLand.com  
601.990.5070 office | 601.209.7150 cell



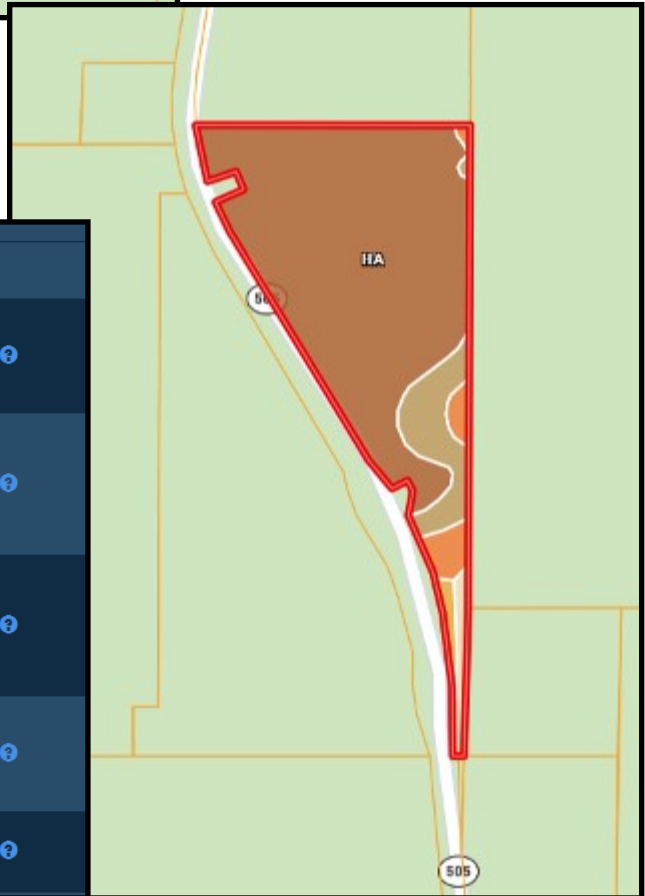
**TomSmithLandandHomes.com**

Information is believed to be accurate but not guaranteed.



Ownership Map

Soil Map



CODE	DESCRIPTION	ACRES	%	CAP
SbD2	Sawyer fine sandy loam, eroded sloping phase (sweatman) (8 to 12 percent slopes)	3.26	10.1%	6e
SbC2	Sawyer fine sandy loam, eroded gently sloping phase (sweatman) (5 to 8 percent slopes)	1.45	4.5%	4e
VaB	Vaiden-Eutaw clays, very gently sloping phases (vaiden-vaiden) (2 to 5 percent slopes)	0.9	2.8%	3e
McB	Mayhew silty clay loam, very gently sloping phase (2 to 5 percent slopes)	0.54	1.7%	3e
Ha	Houlka clay (0 to 2 percent slopes)	26.12	80.9%	2w



*call me today!*



**PRESTON SMITH**, MANAGING BROKER  
 Preston@TomSmithLand.com  
 601.990.5070 office | 601.209.7150 cell

Expect More. Get More.



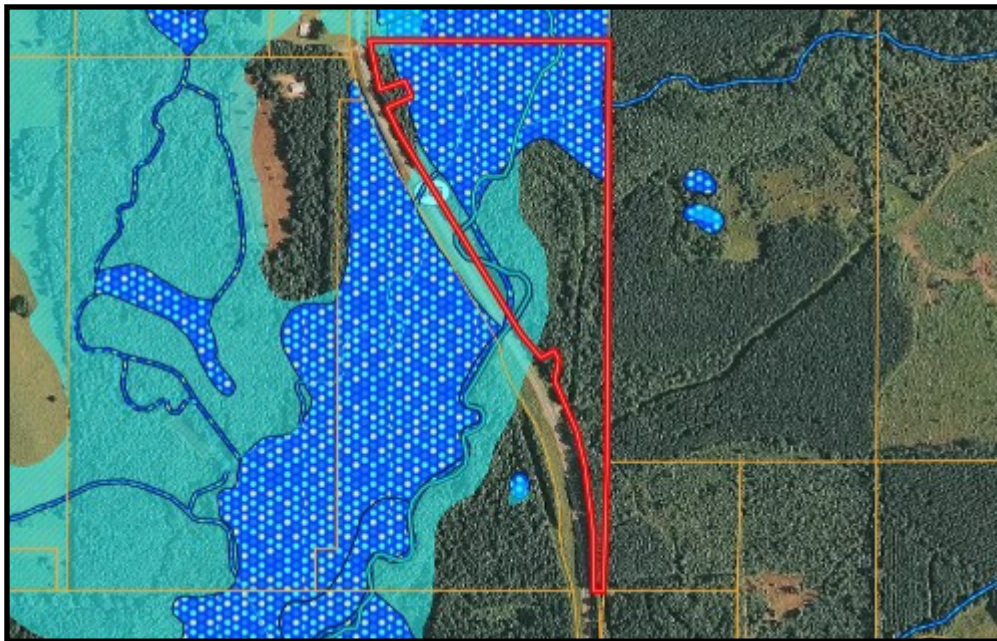
**TomSmithLandandHomes.com**

Information is believed to be accurate but not guaranteed.

# Topography Map



# Flood Map



*Call me today!*

**PRESTON SMITH**, MANAGING BROKER

Preston@TomSmithLand.com

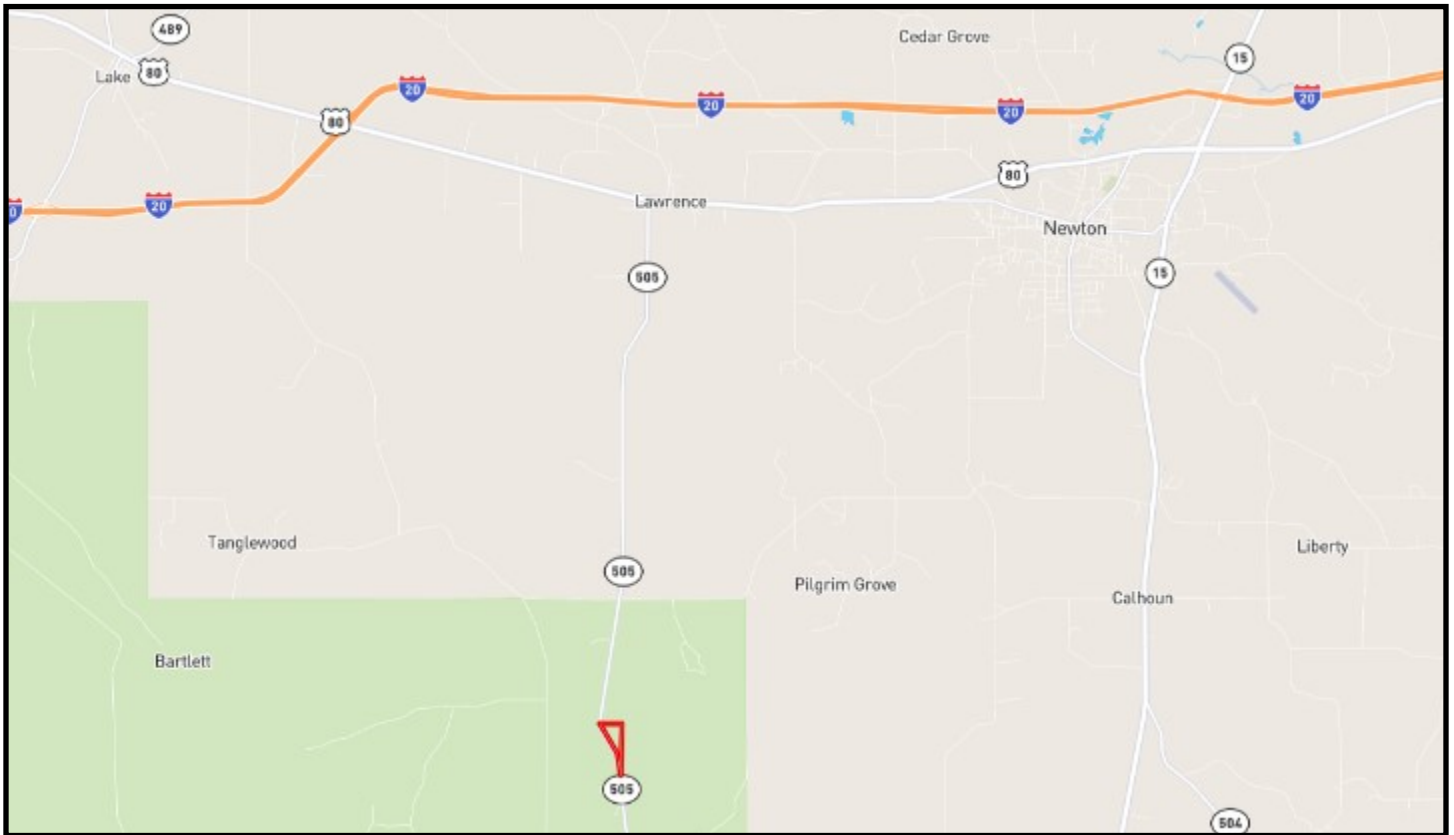
601.990.5070 office | 601.209.7150 cell



Expect More. Get More.

**TomSmithLandandHomes.com**

Information is believed to be accurate but not guaranteed.



## Directional Map

Directions from I-20 E in Lawrence, MS: Take exit 100 to merge onto US-80 E. Travel 3.3 miles. Turn right onto MS-505 S. Travel 5.6 miles and the property will be on the left.



*call me today!*

**PRESTON SMITH**, MANAGING BROKER

Preston@TomSmithLand.com

601.990.5070 office | 601.209.7150 cell



Expect More. Get More.



**TomSmithLandandHomes.com**

Information is believed to be accurate but not guaranteed.