

58+/- Acre Hunting and Timber Tract

Newton County, MS



This 58+/- acre property in Newton County, MS offers great deer and turkey hunting and would be a timber investment. The property features 51+/- acres of 20 year old planted pine timber and 7+/- acres of natural growth timber, an internal road system and multiple home/camp sites. Utilities are available. The property offers rolling terrain and road frontage on Liberty Road in Little Rock, MS, convenient to Jackson and Meridian. Call Preston today to schedule a viewing!



Directions from MS-19 N in Meridian, MS: Travel 6.2 miles and turn left onto MS-494 W. Travel 11 miles and turn left onto Liberty Road. Travel 0.2 miles and the property will be on the left.



Call me today!

PRESTON SMITH, MANAGING BROKER
Preston@TomSmithLand.com
601.990.5070 office | 601.209.7150 cell



Expect More. Get More.

TomSmithLandandHomes.com

Information is believed to be accurate but not guaranteed.



Call me today!

PRESTON SMITH, MANAGING BROKER
Preston@TomSmithLand.com
601.990.5070 office | 601.209.7150 cell



Expect More. Get More.

TomSmithLandandHomes.com

Information is believed to be accurate but not guaranteed.



Call me today!

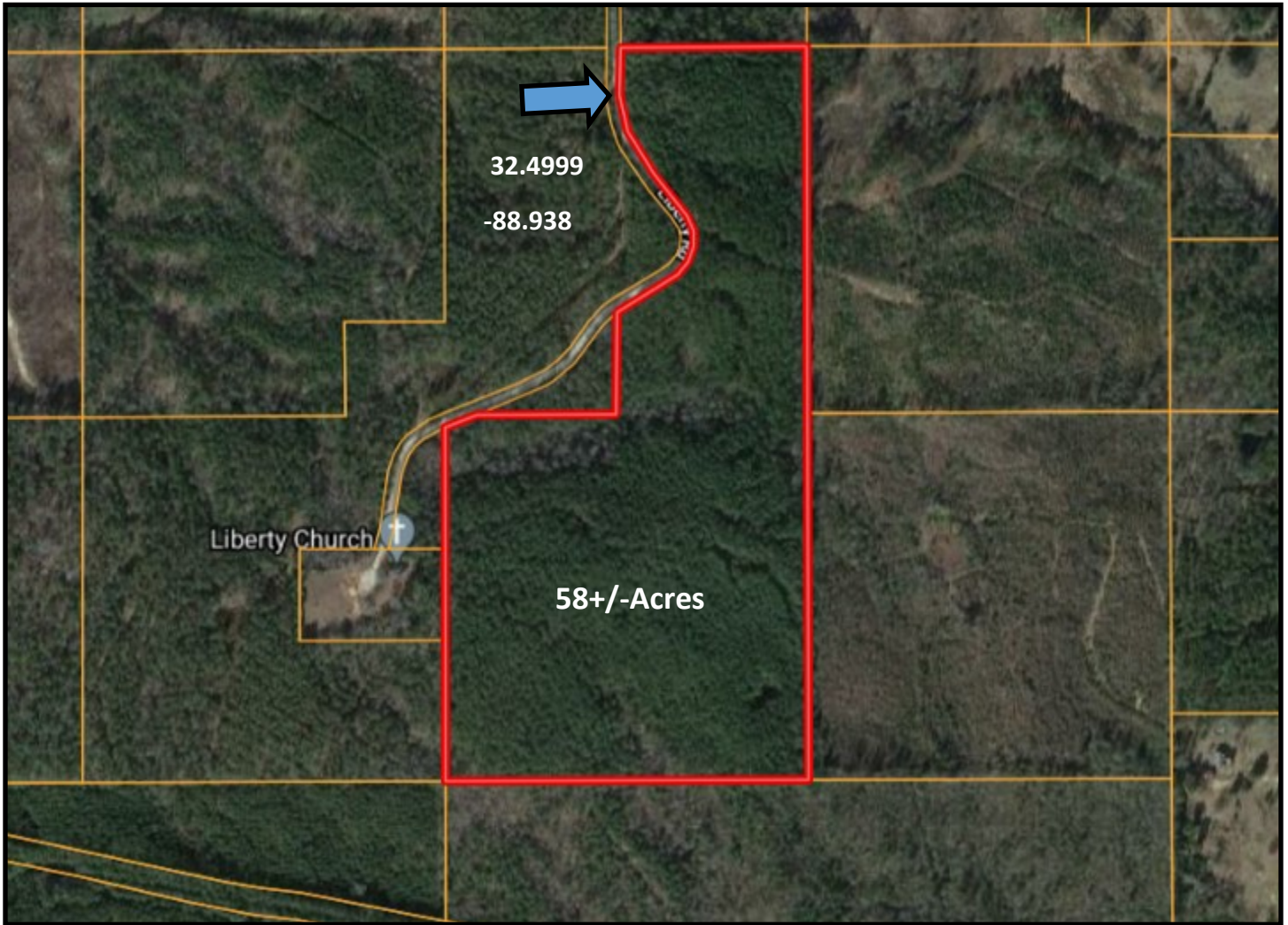
PRESTON SMITH, MANAGING BROKER
Preston@TomSmithLand.com
601.990.5070 office | 601.209.7150 cell



Expect More. Get More.

TomSmithLandandHomes.com

Information is believed to be accurate but not guaranteed.



Aerial Map



call me today!

PRESTON SMITH, MANAGING BROKER

Preston@TomSmithLand.com

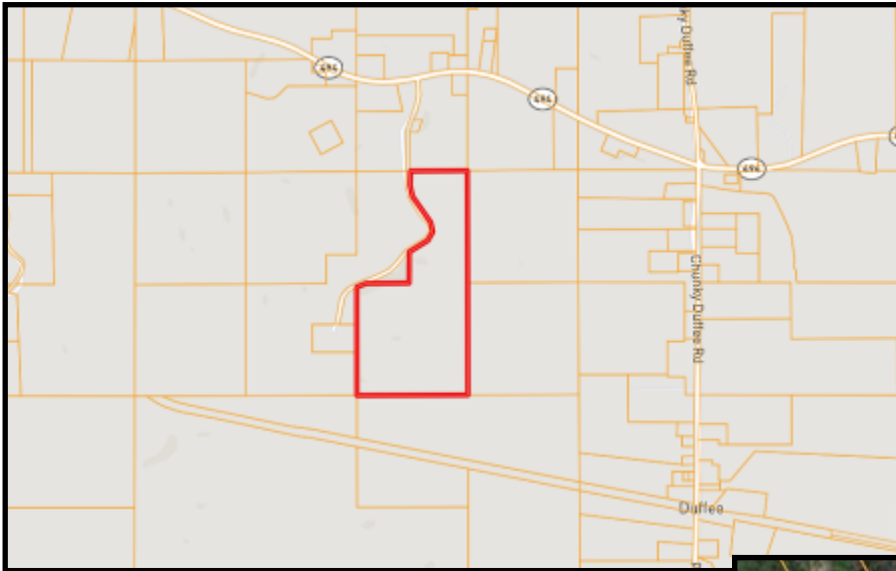
601.990.5070 office | 601.209.7150 cell



Expect More. Get More.

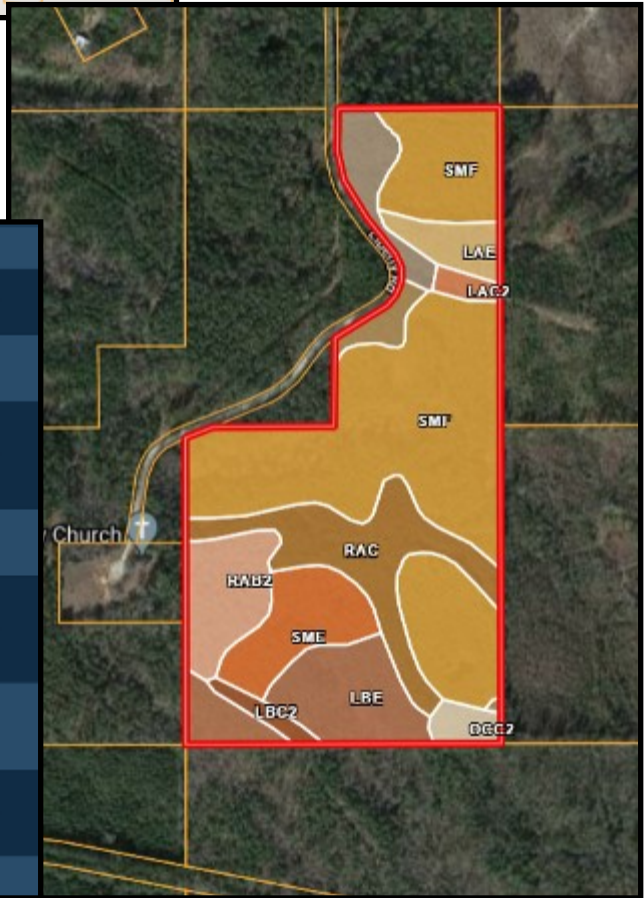
TomSmithLandandHomes.com

Information is believed to be accurate but not guaranteed.



Ownership Map

Soil Map



CODE	DESCRIPTION	ACRES	%	CAP
SmD	Smithdale fine sandy loam, 8 to 12 percent slopes	1.16	2%	4e
SmF	Smithdale fine sandy loam, 12 to 17 percent slopes	4.35	7.5%	6c
OcC2	Ora and Dulac soils, eroded gently sloping phases (ora-providence) (5 to 8 percent slopes)	1.03	1.8%	3e
SmF	Smithdale fine sandy loam, 17 to 35 percent slopes	28.18	48.3%	7e
Lbc2	Lauderdale-Boswell complex, eroded gently sloping; phases (lauderdale-arundel) (5 to 8 percent slopes)	0.79	1.3%	4c
RaC2	Ruston fine sandy loam, eroded gently sloping phase (5 to 8 percent slopes)	2.54	4.4%	3e
RaR2	Ruston fine sandy loam, eroded very gently sloping; phase (2 to 5 percent slopes)	4.02	6.9%	3c
	Lauderdale story fine			



call me today!



PRESTON SMITH, MANAGING BROKER

Preston@TomSmithLand.com

601.990.5070 office | 601.209.7150 cell

Expect More. Get More.



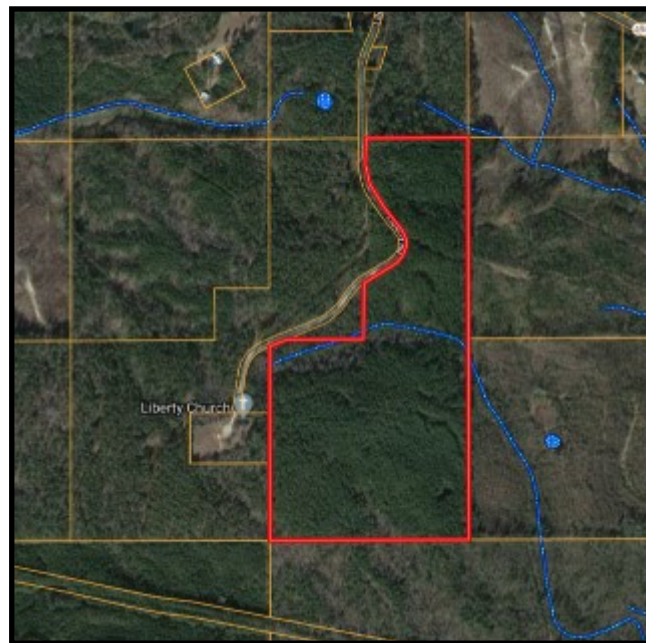
TomSmithLandandHomes.com

Information is believed to be accurate but not guaranteed.

Topography Map



Flood Map



Call me today!

PRESTON SMITH, MANAGING BROKER

Preston@TomSmithLand.com

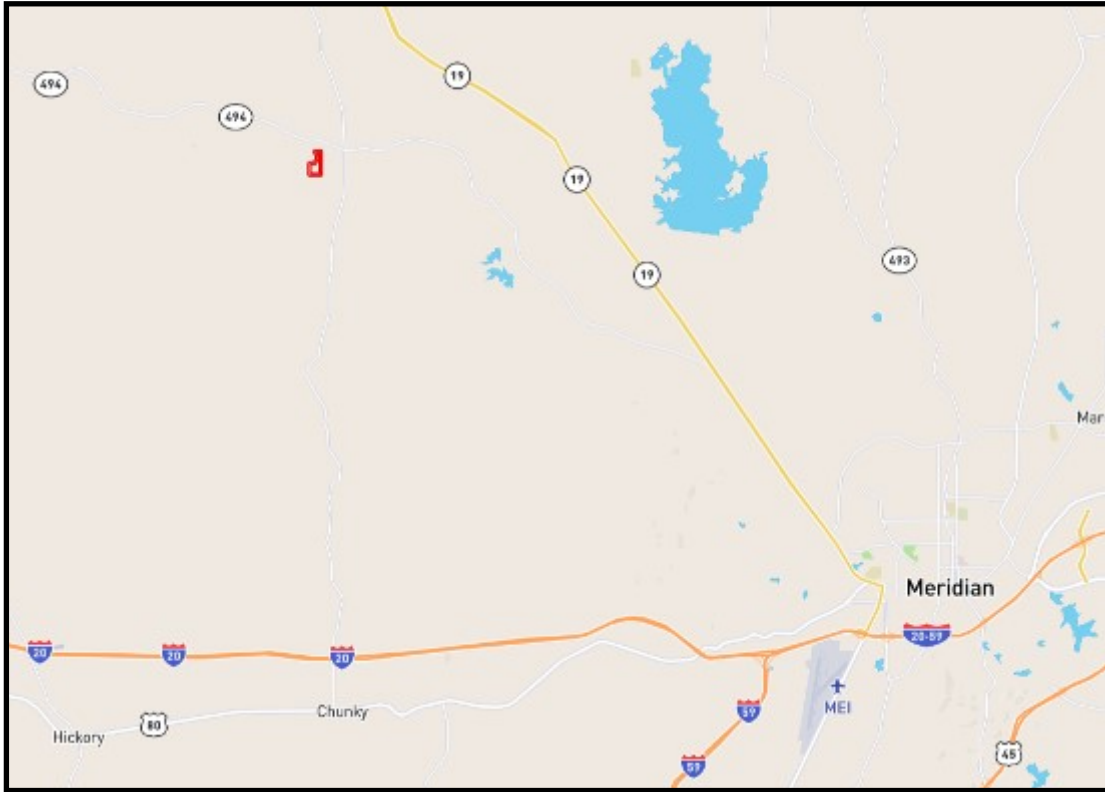
601.990.5070 office | 601.209.7150 cell



Expect More. Get More.

TomSmithLandandHomes.com

Information is believed to be accurate but not guaranteed.



Directional Map

Directions from MS-19 N in Meridian, MS: Travel 6.2 miles and turn left onto MS-494 W. Travel 11 miles and turn left onto Liberty Road. Travel 0.2 miles and the property will be on the left.



call me today!

PRESTON SMITH, MANAGING BROKER

Preston@TomSmithLand.com

601.990.5070 office | 601.209.7150 cell



Expect More. Get More.



TomSmithLandandHomes.com

Information is believed to be accurate but not guaranteed.