

69+/- Acre Hunting Tract

Newton County, MS



This is a great deer and turkey hunting tract! This 69+/- acre property in Newton County, MS features 21+/- acres of 15 year old planted pine timber and 48+/- acres of cutover, an internal road system and multiple home/camp sites with utilities available. The property offers road frontage on Hopewell Road, in Little Rock, MS, convenient to Jackson and Meridian. Call Preston today to schedule a viewing!



Directions from I-20 W/I-59 S in Meridian, MS: Take exit 121 toward Chunky and keep right at the fork and merge onto Chunky Duffee Road. Travel 7.6 miles and turn left onto Hopewell Road and travel 2.3 miles. The property will be on the right.



Call me today!

PRESTON SMITH, MANAGING BROKER
Preston@TomSmithLand.com
601.990.5070 office | 601.209.7150 cell



Expect More. Get More.

TomSmithLandandHomes.com

Information is believed to be accurate but not guaranteed.



Call me today!

PRESTON SMITH, MANAGING BROKER
Preston@TomSmithLand.com
601.990.5070 office | 601.209.7150 cell



TomSmithLandandHomes.com

Information is believed to be accurate but not guaranteed.



call me today!

PRESTON SMITH, MANAGING BROKER
Preston@TomSmithLand.com
601.990.5070 office | 601.209.7150 cell



TomSmithLandandHomes.com

Information is believed to be accurate but not guaranteed.



Aerial Map



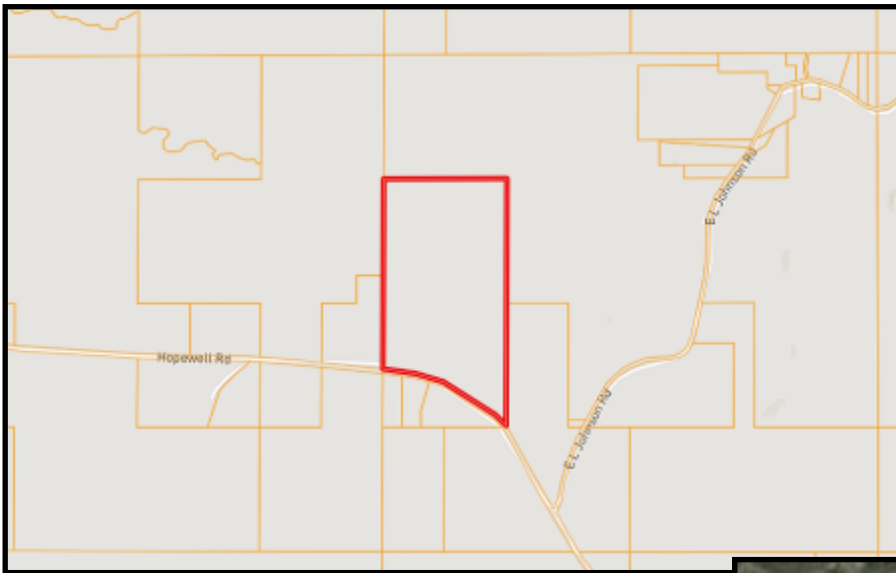
call me today!

PRESTON SMITH, MANAGING BROKER
Preston@TomSmithLand.com
601.990.5070 office | 601.209.7150 cell



TomSmithLandandHomes.com

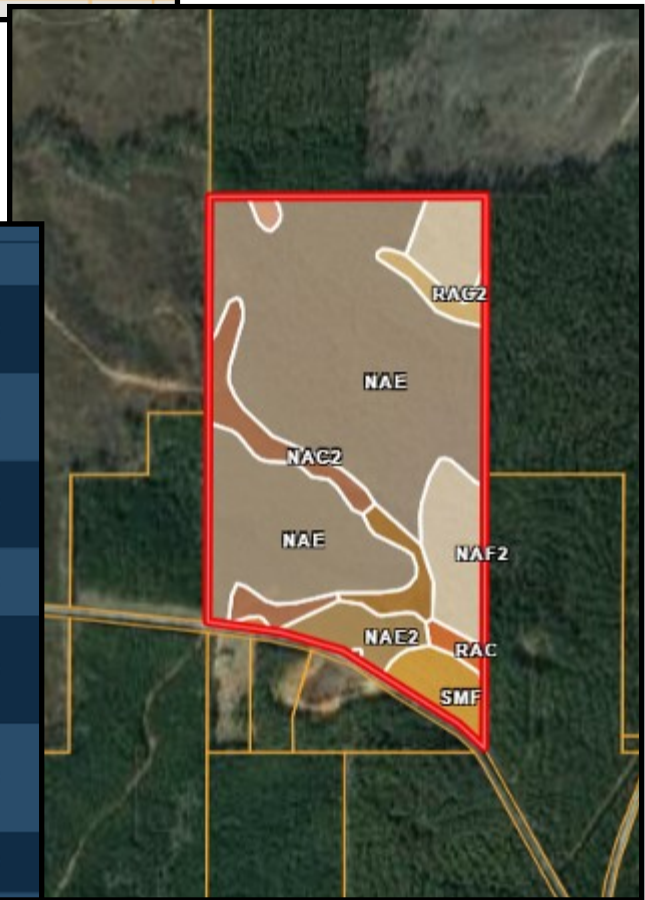
Information is believed to be accurate but not guaranteed.



Ownership Map

Soil Map

CODE	DESCRIPTION	ACRES	%	CAP
NaE2	Nacopdoches loam, eroded strongly sloping phase (williamsville)	2.92	4.3%	6e
RaC	Ruston fine sandy loam, gently sloping phase (5 to 8 percent slopes)	0.79	1.2%	3c
NaF2	Nacopdoches loam, eroded moderately steep phase (williamsville)	8.22	12%	7e
SmF	Smithdale fine sandy loam, 17 to 35 percent slopes	2.78	4.1%	7e
NbC3	Nacopdoches sandy clay loam, severely eroded gently sloping phase (meshaha) (5 to 8 percent slopes)	0.04	0.1%	4e
NaF	Nacopdoches loam, strongly sloping phase (williamsville) (12 to 17 percent slopes)	45.16	65.9%	6e
Ma	Mantachie soils (bibb) (0 to 2 percent slopes)	0.41	0.6%	3w



call me today!



PRESTON SMITH, MANAGING BROKER

Preston@TomSmithLand.com

601.990.5070 office | 601.209.7150 cell

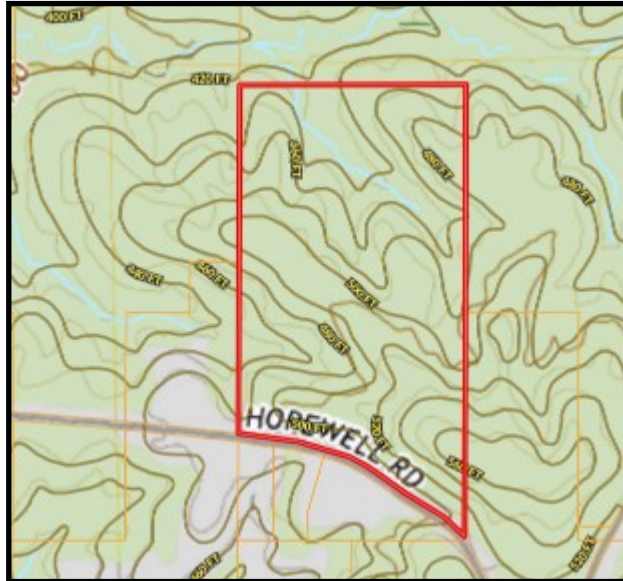
Expect More. Get More.



TomSmithLandandHomes.com

Information is believed to be accurate but not guaranteed.

Topography Map



Flood Map



Call me today!

PRESTON SMITH, MANAGING BROKER

Preston@TomSmithLand.com

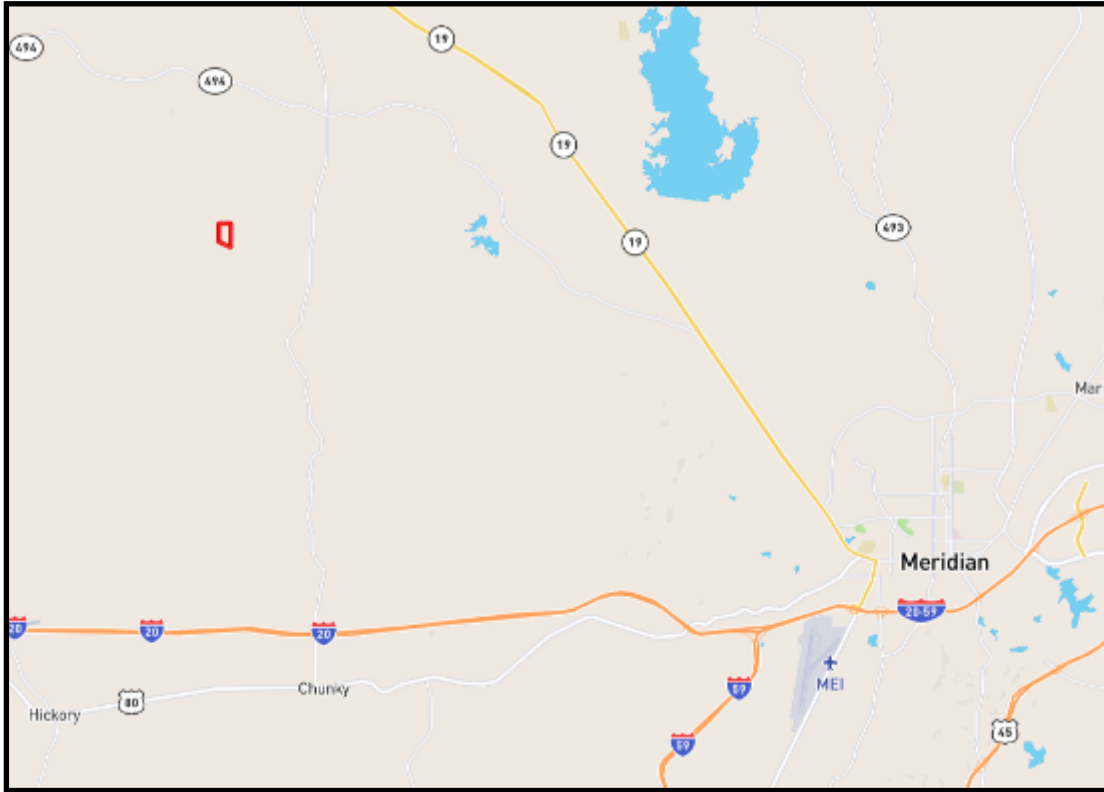
601.990.5070 office | 601.209.7150 cell



Expect More. Get More.

TomSmithLandandHomes.com

Information is believed to be accurate but not guaranteed.



Directional Map

Directions from I-20 W/I-59 S in Meridian, MS: Take exit 121 toward Chunky and keep right at the fork and merge onto Chunky Duffee Road. Travel 7.6 miles and turn left onto Hopewell Road and travel 2.3 miles. The property will be on the right.



call me today!

PRESTON SMITH, MANAGING BROKER

Preston@TomSmithLand.com

601.990.5070 office | 601.209.7150 cell



Expect More. Get More.

TomSmithLandandHomes.com

Information is believed to be accurate but not guaranteed.