

72.14+/- Acre Hunting Tract

Newton County, MS



\$160,000



Have you been looking for a great deer and turkey hunting tract? This 72.14+/- acre tract in Newton County, MS is it! The property features a creek, a good stand of hardwood timber, an internal road system and multiple home or camp sites. Located just south of I20 in Lawrence, MS, the property offers road frontage on HWY 505, and is convenient to Jackson and Meridian. Call Preston today to schedule a viewing!

Directions from I-20 E in Lawrence, MS: Take exit 100 to merge onto US-80 E. Travel 3.3 miles. Turn right onto MS-505 S. Travel 5.6 miles and the property will be on the right and the left.



call me today!

PRESTON SMITH, MANAGING BROKER
Preston@TomSmithLand.com
601.990.5070 office | 601.209.7150 cell



Expect More. Get More.

TomSmithLandandHomes.com

Information is believed to be accurate but not guaranteed.



call me today!

PRESTON SMITH, MANAGING BROKER
Preston@TomSmithLand.com
601.990.5070 office | 601.209.7150 cell



Expect More. Get More.

TomSmithLandandHomes.com

Information is believed to be accurate but not guaranteed.



call me today!

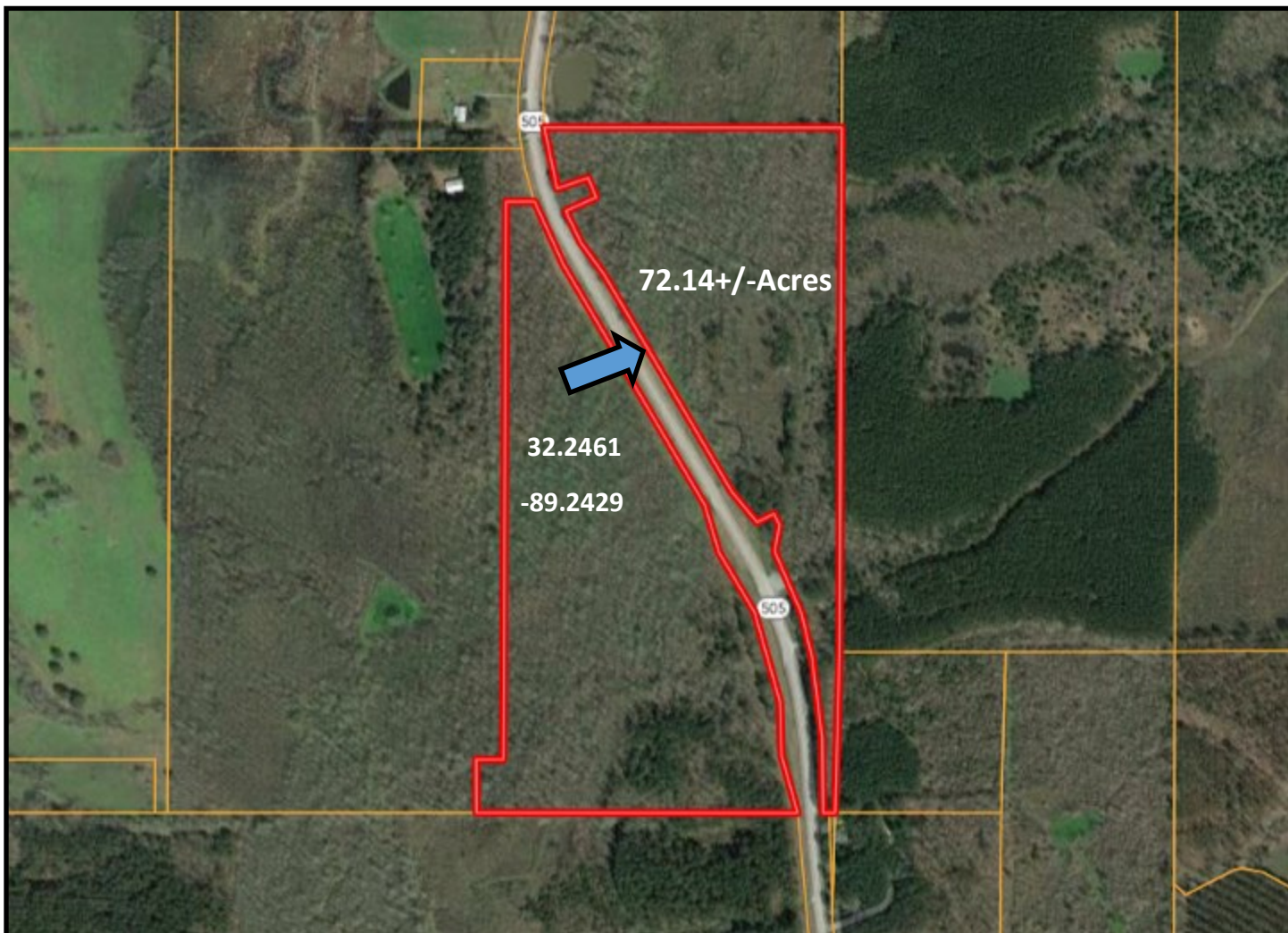
PRESTON SMITH, MANAGING BROKER
Preston@TomSmithLand.com
601.990.5070 office | 601.209.7150 cell



Expect More. Get More.

TomSmithLandandHomes.com

Information is believed to be accurate but not guaranteed.



Aerial Map



call me today!

PRESTON SMITH, MANAGING BROKER

Preston@TomSmithLand.com

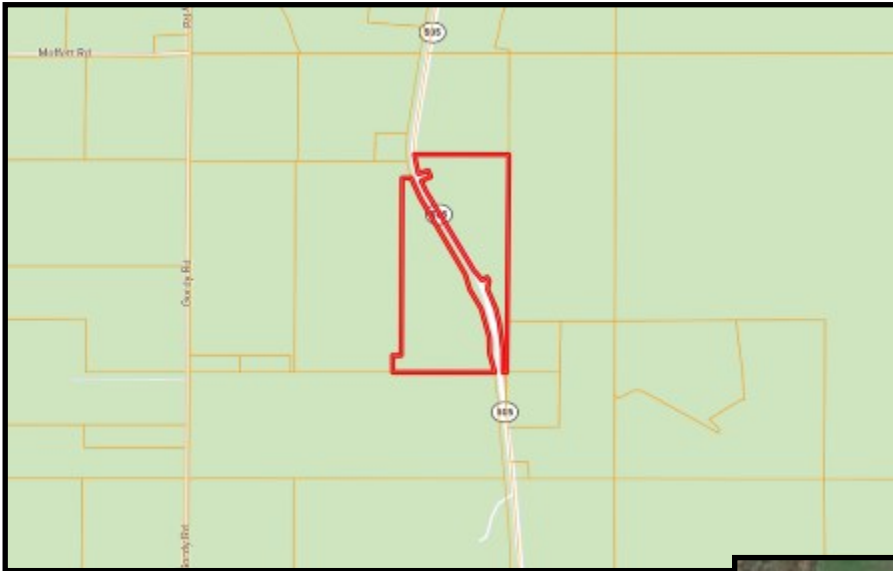
601.990.5070 office | 601.209.7150 cell



Expect More. Get More.

TomSmithLandandHomes.com

Information is believed to be accurate but not guaranteed.



Ownership Map

Soil Map

CODE	DESCRIPTION	ACRES	%	CAP
SbD2	Sawyer fine sandy loam, eroded sloping phase (sweetman) (8 to 12 percent slopes)	7.41	10.1%	6c
SbC2	Sawyer fine sandy loam, eroded gently sloping phase (sweetman) (5 to 8 percent slopes)	5.21	7.1%	4e
Va11	Vaiden-Eutaw clays, very gently sloping phases (vaiden-vaiden) (2 to 5 percent slopes)	0.9	1.2%	3e
McB	Mayhew silty clay loam, very gently sloping phase (2 to 5 percent slopes)	2.31	3.1%	3e
Ha	Houlika clay (0 to 2 percent slopes)	56.7	77.3%	2w
VaD2	Vaiden-Eutaw clays, eroded sloping phases (vaiden vaiden) (8 to 12 percent slopes)	0.83	1.1%	6c



call me today!

PRESTON SMITH, MANAGING BROKER

Preston@TomSmithLand.com

601.990.5070 office | 601.209.7150 cell

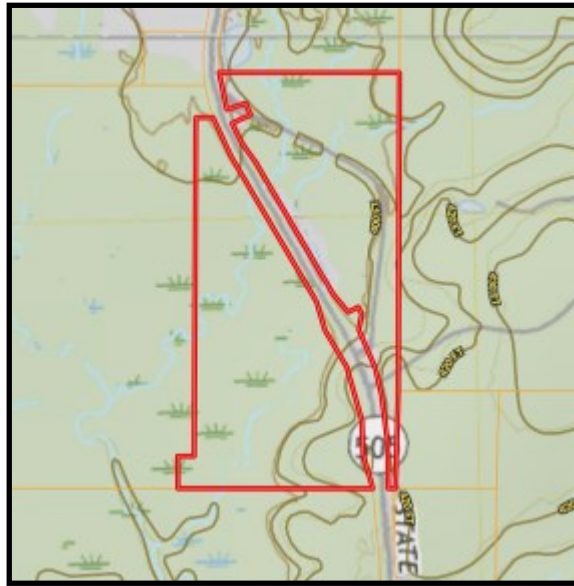


Expect More. Get More.

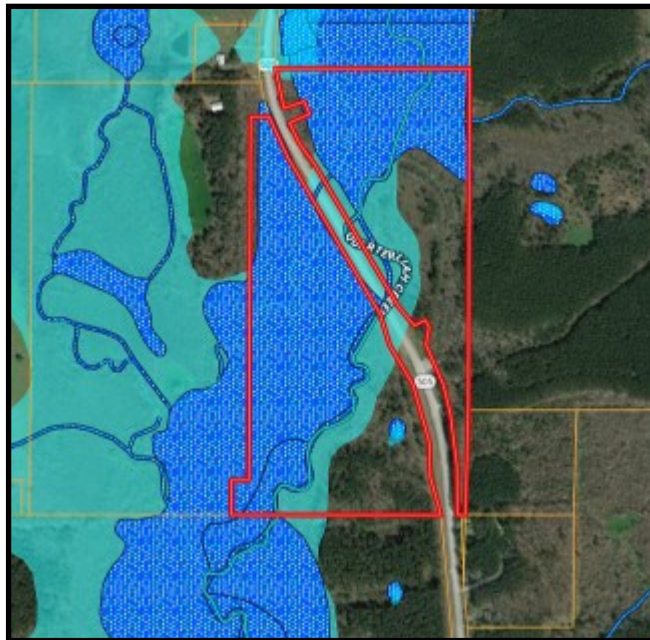
TomSmithLandandHomes.com

Information is believed to be accurate but not guaranteed.

Topography Map



Flood Map



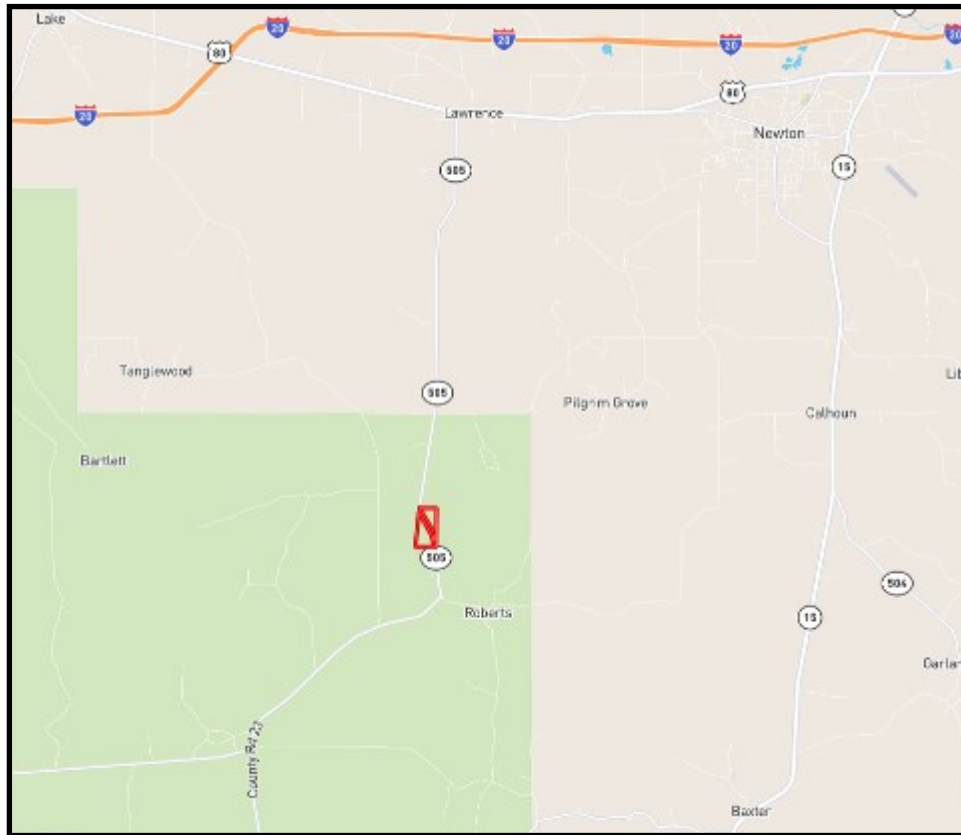
call me today!

PRESTON SMITH, MANAGING BROKER
Preston@TomSmithLand.com
601.990.5070 office | 601.209.7150 cell



TomSmithLandandHomes.com

Information is believed to be accurate but not guaranteed.



Directional Map

Directions from I-20 E in Lawrence, MS: Take exit 100 to merge onto US-80 E. Travel 3.3 miles. Turn right onto MS-505 S. Travel 5.6 miles and the property will be on the right and the left.



call me today!

PRESTON SMITH, MANAGING BROKER

Preston@TomSmithLand.com

601.990.5070 office | 601.209.7150 cell



Expect More. Get More.

TomSmithLandandHomes.com

Information is believed to be accurate but not guaranteed.