

138+/- Acre Recreational Paradise Claiborne County, MS



\$340,000



call me today!

CLIF CANNON, REALTOR®

Clif@TomSmithLand.com

601.990.5070 office | 601.565.1070 cell

**Tom
Smith
LAND AND
HOMES**

Expect More. Get More.

2011-2020
BEST
BROKERAGES

TomSmithLandandHomes.com

Information is believed to be accurate but not guaranteed.



Take a look at this 138+/- acre recreational tract located minutes off US-61 just north of Lorman, MS. Whether it be summer fun or easy to get to stand sites, the internal road system offers year round access to all corners of this Claiborne County property. Supplemental feeding locations, as well as food plots, are strategically located to maximize hunting opportunities. The unique composition of the rolling terrain and thick bottoms offer places for deer and turkey to flourish and the high protein natural forage will help produce large antlers and long beards for many years to come. Stocked years ago, the 1.75+/- acre pond still provides good fishing during the summer months. The property offers 1600+/- ft of road frontage on Gordon Station / Pearline Bailey Road with community water and power available at the road. Call Clif Cannon to schedule a showing today!



CLIF CANNON, REALTOR®

Clif@TomSmithLand.com

601.990.5070 office | 601.565.1070 cell



Expect More. Get More.

TomSmithLandandHomes.com

Information is believed to be accurate but not guaranteed.



CLIF CANNON, REALTOR®

Clif@TomSmithLand.com

601.990.5070 office | 601.565.1070 cell

Expect More. Get More.

TomSmithLandandHomes.com

Information is believed to be accurate but not guaranteed.



CLIF CANNON, REALTOR®

Clif@TomSmithLand.com

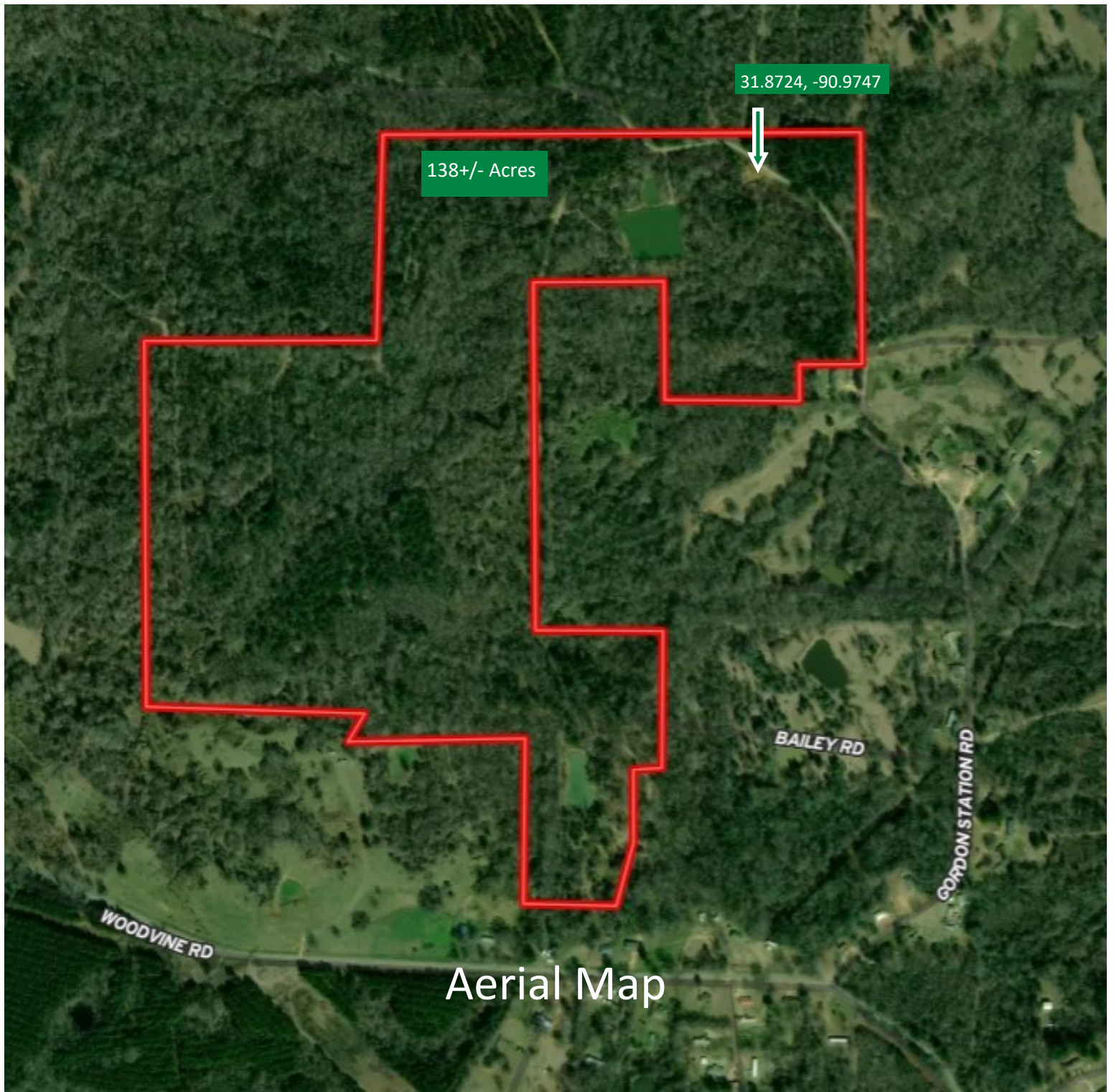
601.990.5070 office | 601.565.1070 cell



Expect More. Get More.

TomSmithLandandHomes.com

Information is believed to be accurate but not guaranteed.



Aerial Map



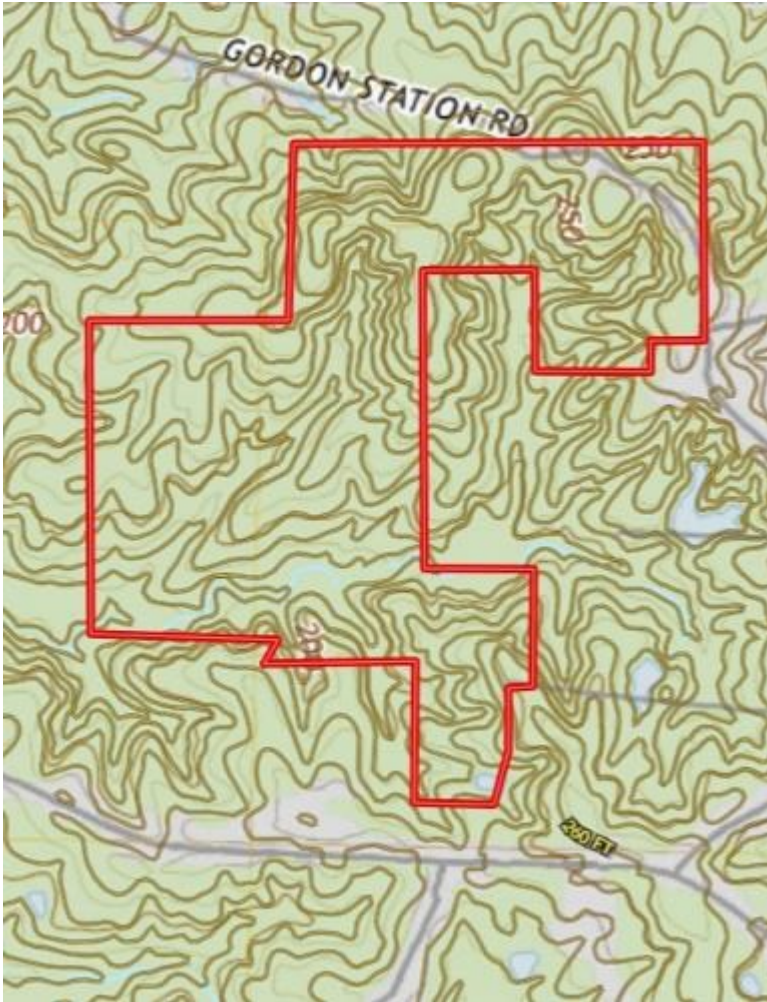
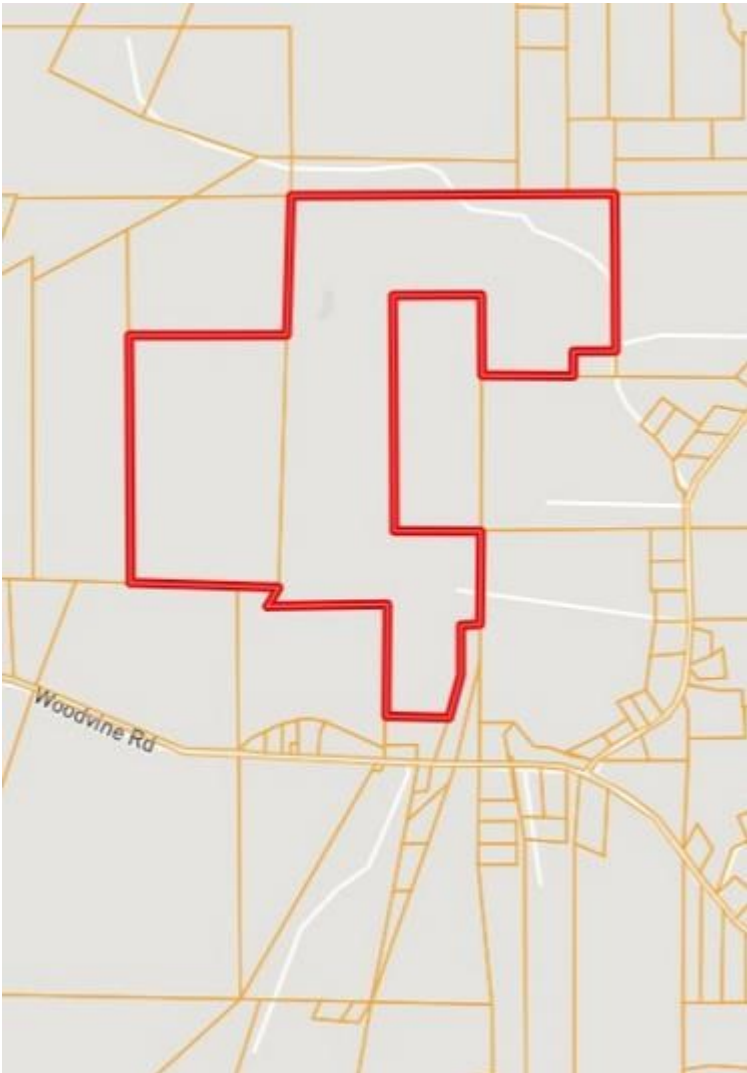
CLIF CANNON, REALTOR®
Clif@TomSmithLand.com
601.990.5070 office | 601.565.1070 cell



TomSmithLandandHomes.com

Information is believed to be accurate but not guaranteed.

Ownership Map



Topographic Map



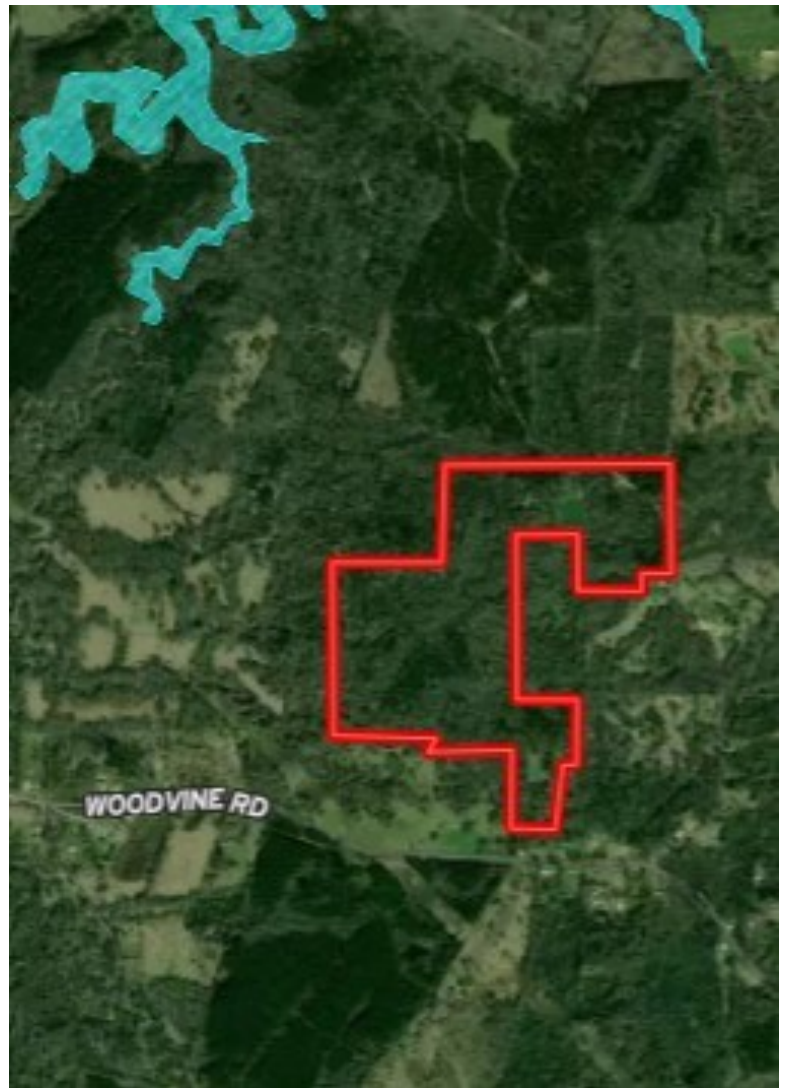
CLIF CANNON, REALTOR®
Clif@TomSmithLand.com
601.990.5070 office | 601.565.1070 cell



TomSmithLandandHomes.com

Information is believed to be accurate but not guaranteed.

Flood Map



Directions from Port Gibson, MS: Travel south on US-61 for 5.6 miles. Turn left onto Woodvine Road and travel for 2.6 miles. Turn left onto Gordon Station Road and travel for .8 miles. The property will be on both sides of the road, with the main body on the left.

Directional Map



CLIF CANNON, REALTOR®

Clif@TomSmithLand.com

601.990.5070 office | 601.565.1070 cell



TomSmithLandandHomes.com

Information is believed to be accurate but not guaranteed.