

# Country Home in Bolivar County, MS

619 Crosby Rd / Boyle, MS



Agent Owned

\$459,000

Are you looking for the perfect house? Check out this 5,300+/- sq. ft. home on the edge of town, in Bolivar County, MS. The home features four bedrooms, three and a half baths downstairs, granite countertops in the kitchen and master bathroom, two large dens, a gas fireplace, a formal dining room, beautiful floors throughout, 12-foot ceilings, and 8-foot doors. If that's not enough, work your way upstairs to a pool table in one room and a huge recreational room on the other, with a 100-inch projector screen ready for movie night! The front and rear double doors are custom-built by MS Ironworks and installed in 2019. The home has a built-in mosquito system, security cameras, an alarm system, and a 30 ft x 40 ft shop with electricity! Why wait? Call today for your private showing! (662)441-2500.

**Directions from the intersection of Hwy 8 and Hwy 61 Cleveland, MS:** Travel South on Hwy 61 for approximately 2.0 miles. Turn left onto Laughlin Road and continue straight for 2.6 miles. Turn left onto



**TRACEY BELL**, MANAGING BROKER  
Tracey@TomSmithLand.com  
662.441.2500 office | 662.719.4720 cell



Expect More. Get More.

*Call us today!*



**ROBIN ADAMS**, REALTOR®  
Robin@TomSmithHomes.com  
601.898.2772 office | 601.502.3877 cell

**TomSmithLandandHomes.com**

Information is believed to be accurate but not guaranteed.





**TRACEY BELL**, MANAGING BROKER  
Tracey@TomSmithLand.com  
662.441.2500 **office** | 662.719.4720 **cell**



**ROBIN ADAMS**, REALTOR®  
Robin@TomSmithHomes.com  
601.898.2772 **office** | 601.502.3877 **cell**

**TomSmithLandandHomes.com**

Information is believed to be accurate but not guaranteed.





**TRACEY BELL**, MANAGING BROKER  
Tracey@TomSmithLand.com  
662.441.2500 **office** | 662.719.4720 **cell**



**ROBIN ADAMS**, REALTOR®  
Robin@TomSmithHomes.com  
601.898.2772 **office** | 601.502.3877 **cell**

**TomSmithLandandHomes.com**

Information is believed to be accurate but not guaranteed.





**TRACEY BELL**, MANAGING BROKER  
Tracey@TomSmithLand.com  
662.441.2500 **office** | 662.719.4720 **cell**

**ROBIN ADAMS**, REALTOR®  
Robin@TomSmithHomes.com  
601.898.2772 **office** | 601.502.3877 **cell**

**TomSmithLandandHomes.com**

Information is believed to be accurate but not guaranteed.





**TRACEY BELL**, MANAGING BROKER  
Tracey@TomSmithLand.com  
662.441.2500 **office** | 662.719.4720 **cell**



**ROBIN ADAMS**, REALTOR®  
Robin@TomSmithHomes.com  
601.898.2772 **office** | 601.502.3877 **cell**

**TomSmithLandandHomes.com**

Information is believed to be accurate but not guaranteed.





**TRACEY BELL**, MANAGING BROKER  
Tracey@TomSmithLand.com  
662.441.2500 **office** | 662.719.4720 **cell**



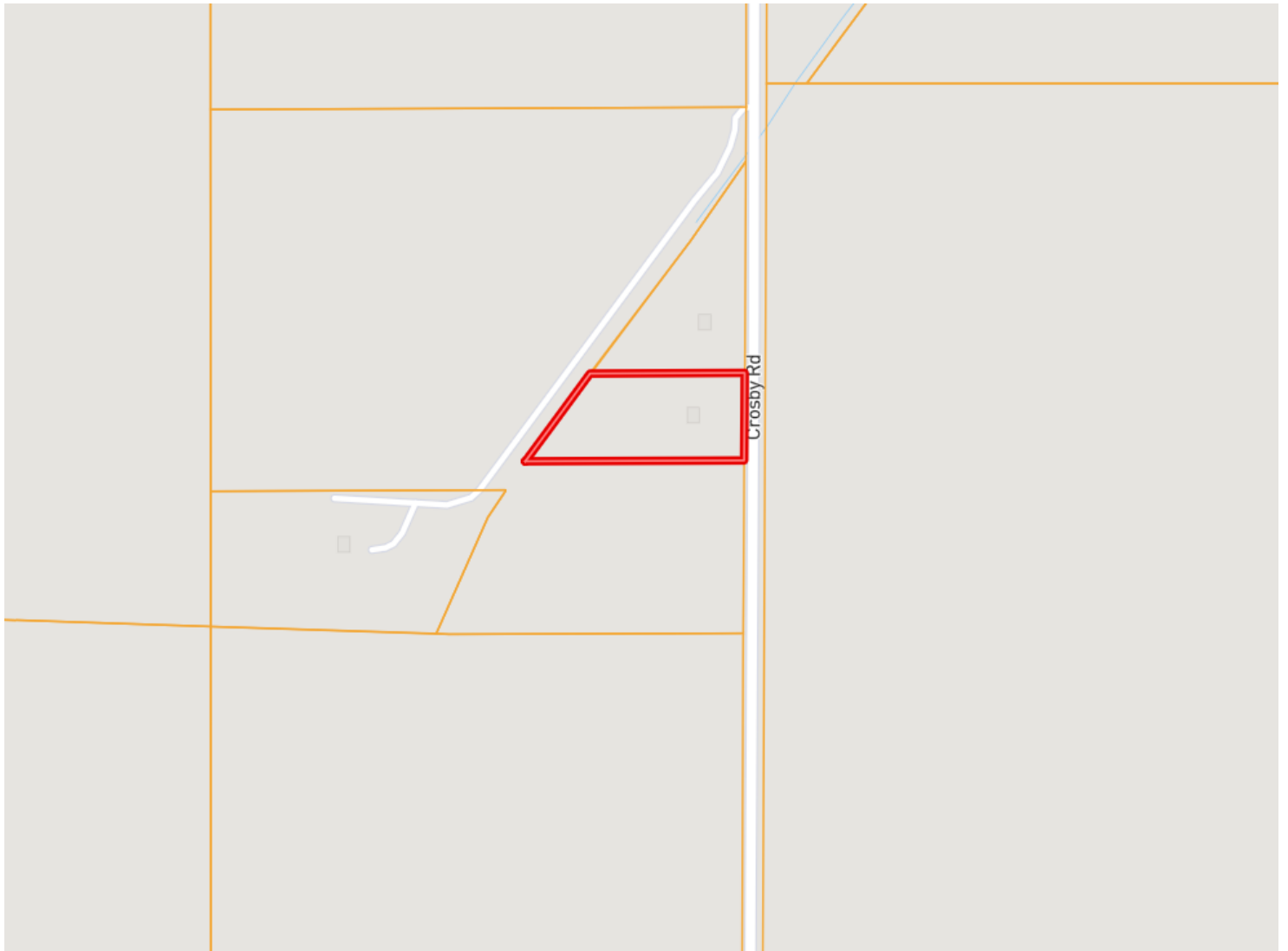
**ROBIN ADAMS**, REALTOR®  
Robin@TomSmithHomes.com  
601.898.2772 **office** | 601.502.3877 **cell**

**TomSmithLandandHomes.com**

Information is believed to be accurate but not guaranteed.



# OWNERSHIP MAP



**TRACEY BELL**, MANAGING BROKER  
Tracey@TomSmithLand.com  
662.441.2500 **office** | 662.719.4720 **cell**



**ROBIN ADAMS**, REALTOR®  
Robin@TomSmithHomes.com  
601.898.2772 **office** | 601.502.3877 **cell**

**TomSmithLandandHomes.com**

Information is believed to be accurate but not guaranteed.



# AERIAL MAP



[Click for Interactive Map](#)

**TRACEY BELL**, MANAGING BROKER  
Tracey@TomSmithLand.com  
662.441.2500 **office** | 662.719.4720 **cell**



**ROBIN ADAMS**, REALTOR®  
Robin@TomSmithHomes.com  
601.898.2772 **office** | 601.502.3877 **cell**

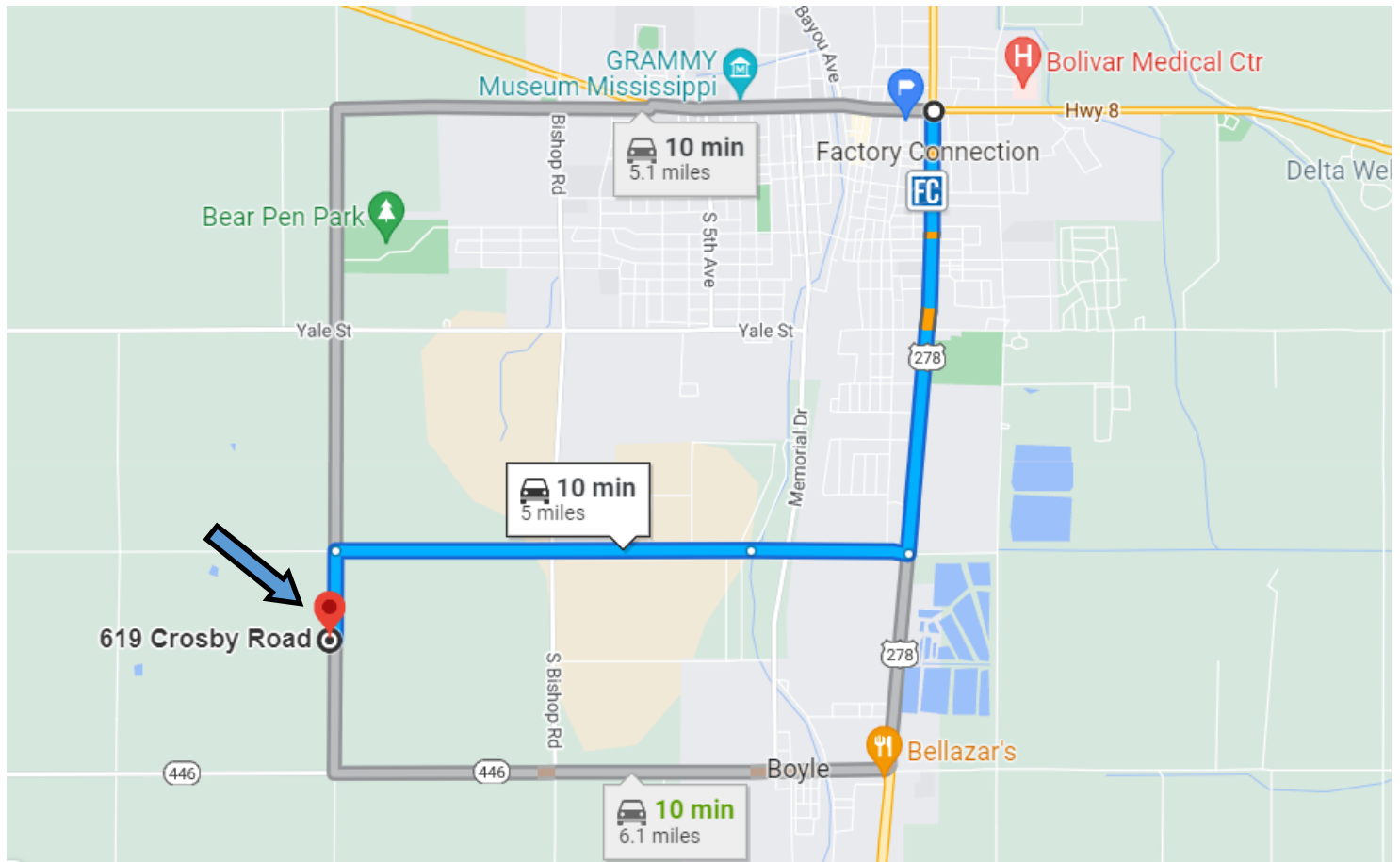
**TomSmithLandandHomes.com**

Information is believed to be accurate but not guaranteed.





# DIRECTIONAL MAP



**Address: 619 Crosby Road Boyle, MS 38730**

**Directions from the intersection of Hwy 8 and Hwy 61 Cleveland, MS:** Travel South on Hwy 61 for approximately 2.0 miles. Turn left onto Laughlin Road and continue straight for 2.6 miles. Turn left onto Crosby Rd, in 0.4 miles the destination is on the right. [Click for Google Maps.](#)



**TRACEY BELL**, MANAGING BROKER  
Tracey@TomSmithLand.com  
662.441.2500 office | 662.719.4720 cell



*Call us today!*



**ROBIN ADAMS**, REALTOR®  
Robin@TomSmithHomes.com  
601.898.2772 office | 601.502.3877 cell

**TomSmithLandandHomes.com**

Information is believed to be accurate but not guaranteed.

