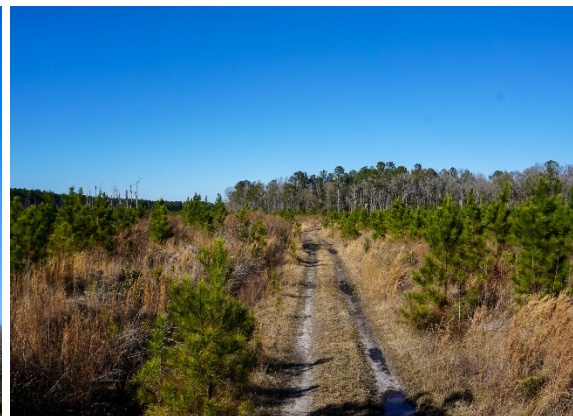


FOR SALE

WASHIE PELHAM

Colleton County
129.62 +/- Acres
\$447,189



The Washie Pelham tract is located in northwestern Colleton County only 1 hour from Beaufort, SC and 1.5 hours from Charleston, SC. The property is the ideal size acreage for easy management yet its shape allows it to hunt much larger than it actually is. This area of Colleton County is known for producing quality deer and abundant turkey populations, located in close proximity to the famed Salkehatchie River. This is a must see tract of land for any avid hunters.

FEATURES

- DEER HUNTING
- TURKEY HUNTING
- EASY ACCESS TO CHARLESTON AND BEAUFORT, SC

DIRECTIONS

From Walterboro head South on N. Jefferies Blvd. toward Benson St. In 1.9 miles continues onto SC-63 W for 14.1 miles and the property will be on your right.

CONTACT

TODD CROSBY, BROKER-IN-CHARGE

ToddCrosby@CrosbyLandCo.com

O | 843.782.5700 ~ M | 843.909.0159



DISCLAIMER: ALL INFORMATION PROVIDED IS ASSUMED TO BE ACCURATE AND CORRECT BUT NO ASSUMPTIONS OF LIABILITY ARE INTENDED. NEITHER THE SELLER NOR THE AGENT OF THE SELLER REPRESENT THE ACCURACY OF THE INFORMATION PROVIDED. SELLER DOES NOT GUARANTEE TIMBER VALUE, VOLUMES, AND ACREAGES OF THE WOODLAND, CROPLAND, TIMBER STANDS, PONDS, OR SQUARE FOOTAGE OF ANY STRUCTURE. SELLER DOES NOT GUARANTEE THE FUNCTION OF ANY IMPROVEMENTS, INCLUDING BUT NOT LIMITED TO ALL BUILDINGS, MACHINERY, APPLIANCES, WELLS, EQUIPMENT OR WATER CONTROL DEVICES. NO REPRESENTATIONS OR WARRANTIES ARE EXPRESSED OR IMPLIED AS TO THE PROPERTY, ITS CONDITION, USAGE TYPE, OR BOUNDARIES. THIS OFFERING IS SUBJECT TO ERRORS, OMISSIONS, CHANGES INCLUDING PRICE OR WITHDRAWAL WITHOUT NOTICE.