

House and Mini-Farm

34.8± Acres in Attala County, MS



\$279,000



- 2,857± Square Foot Home
- 34.8± Acres
- Perimeter & Cross Fencing
- 36' x 57' Barn
- Secluded Country Setting
- Paved Highway Frontage
- 2 Miles from Durant, MS
- 15 Miles from Kosciusko, MS

Directions from Durant, MS: From the four way stop at the intersection of Highway 12 E and Highway 51, drive east on Highway 12 for 2.1 miles and the property gate will be on your right.
550 Highway 12 Sallis, MS 39160



call me today!

ADAM HESTER, REALTOR®

Adam@TomSmithLand.com

601.898.2772 office | 601.506.5058 cell



Expect More. Get More.

TomSmithLandandHomes.com

Information is believed to be accurate but not guaranteed.

Have you been looking for country living on a mini-farm? Look no further than this 34.8± acre tract in Attala County, MS. Located near the community of Sallis, this property offers a 2,857± square foot home, open pasture with perimeter fencing and cross fencing, small sections of hardwoods and plantation pines, and recent cut-over that can be converted into additional pasture. When you arrive, drive up the long driveway to the house situated atop a large hill in a secluded setting. The open concept home features three bedrooms, two baths, a family room, and kid's den. The house overlooks the property offering views of all your livestock.

A 36' x 57' barn is on site for all your necessary tack and feed. Currently, cows, horses and goats are kept on the property. Water spickets are in place throughout making it easy to provide a water source for the livestock, as well as a small watering pond.

The work is done for you; enjoy peaceful living and your own private mini-farm! For more details, call Adam Hester today.



ADAM HESTER, REALTOR®
Adam@TomSmithLand.com
601.898.2772 office | 601.506.5058 cell



TomSmithLandandHomes.com

Information is believed to be accurate but not guaranteed.



ADAM HESTER, REALTOR®
 Adam@TomSmithLand.com
 601.898.2772 office | 601.506.5058 cell



TomSmithLandandHomes.com

Information is believed to be accurate but not guaranteed.

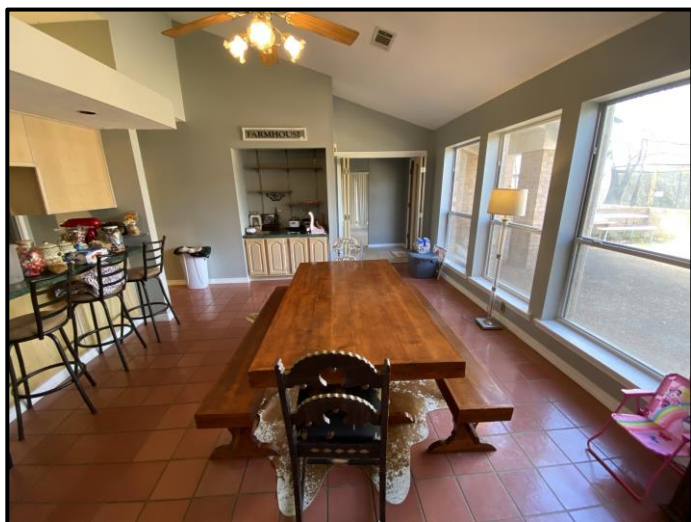
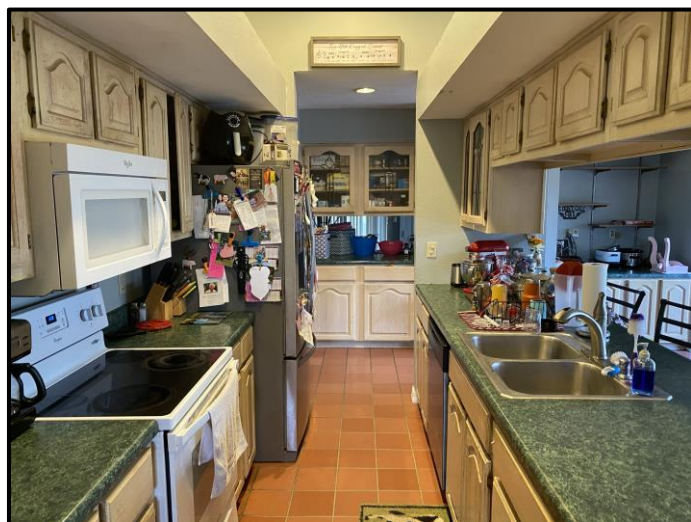


ADAM HESTER, REALTOR®
 Adam@TomSmithLand.com
 601.898.2772 office | 601.506.5058 cell



TomSmithLandandHomes.com

Information is believed to be accurate but not guaranteed.



ADAM HESTER, REALTOR®
Adam@TomSmithLand.com
601.898.2772 office | 601.506.5058 cell



TomSmithLandandHomes.com

Information is believed to be accurate but not guaranteed.

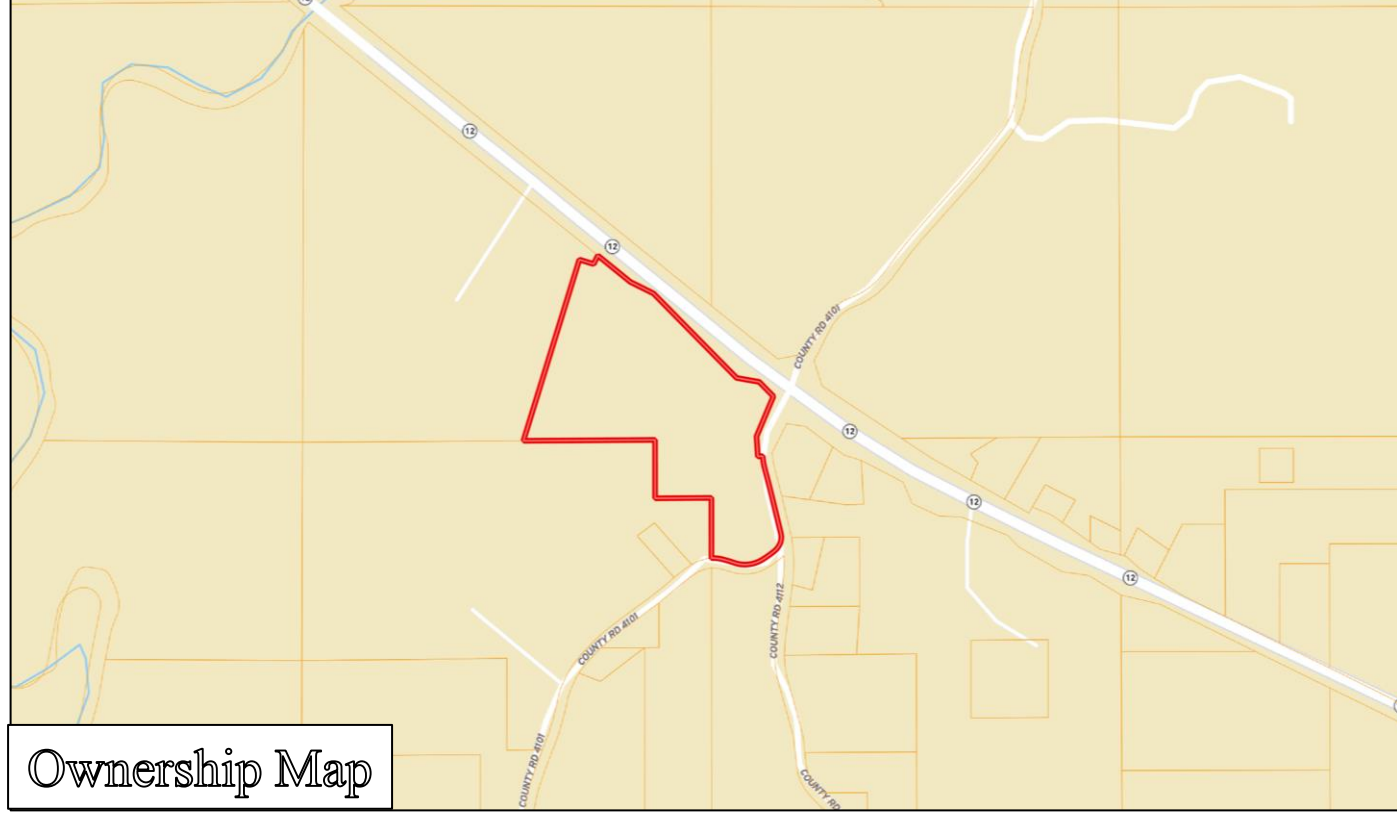


ADAM HESTER, REALTOR®
Adam@TomSmithLand.com
601.898.2772 office | 601.506.5058 cell

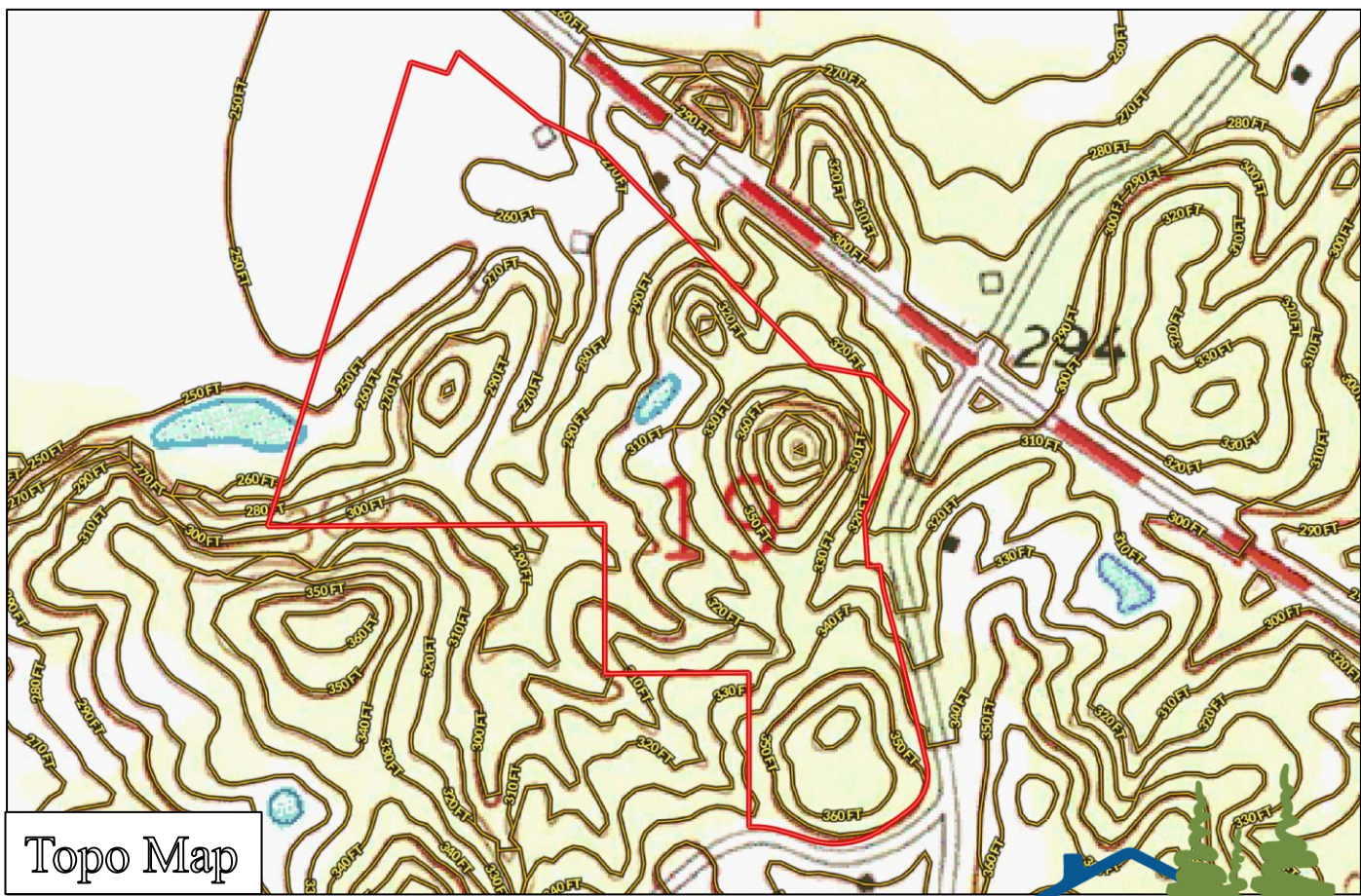


TomSmithLandandHomes.com

Information is believed to be accurate but not guaranteed.



Ownership Map



Topo Map

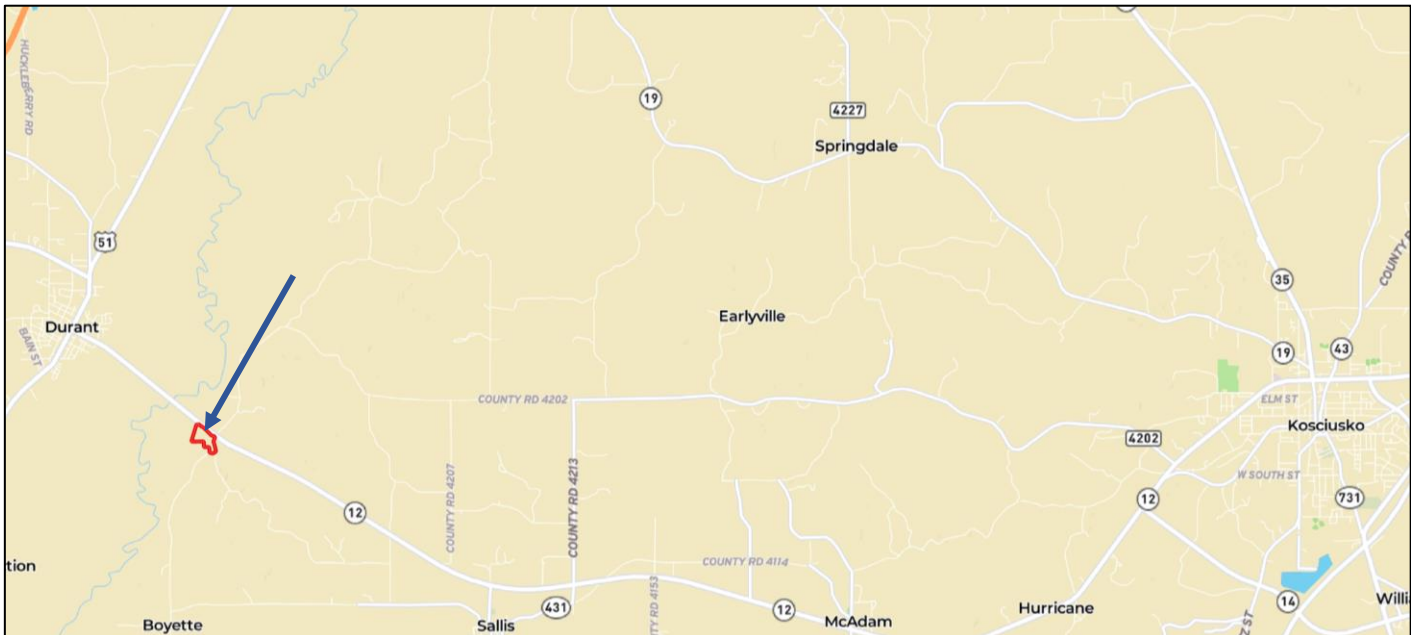
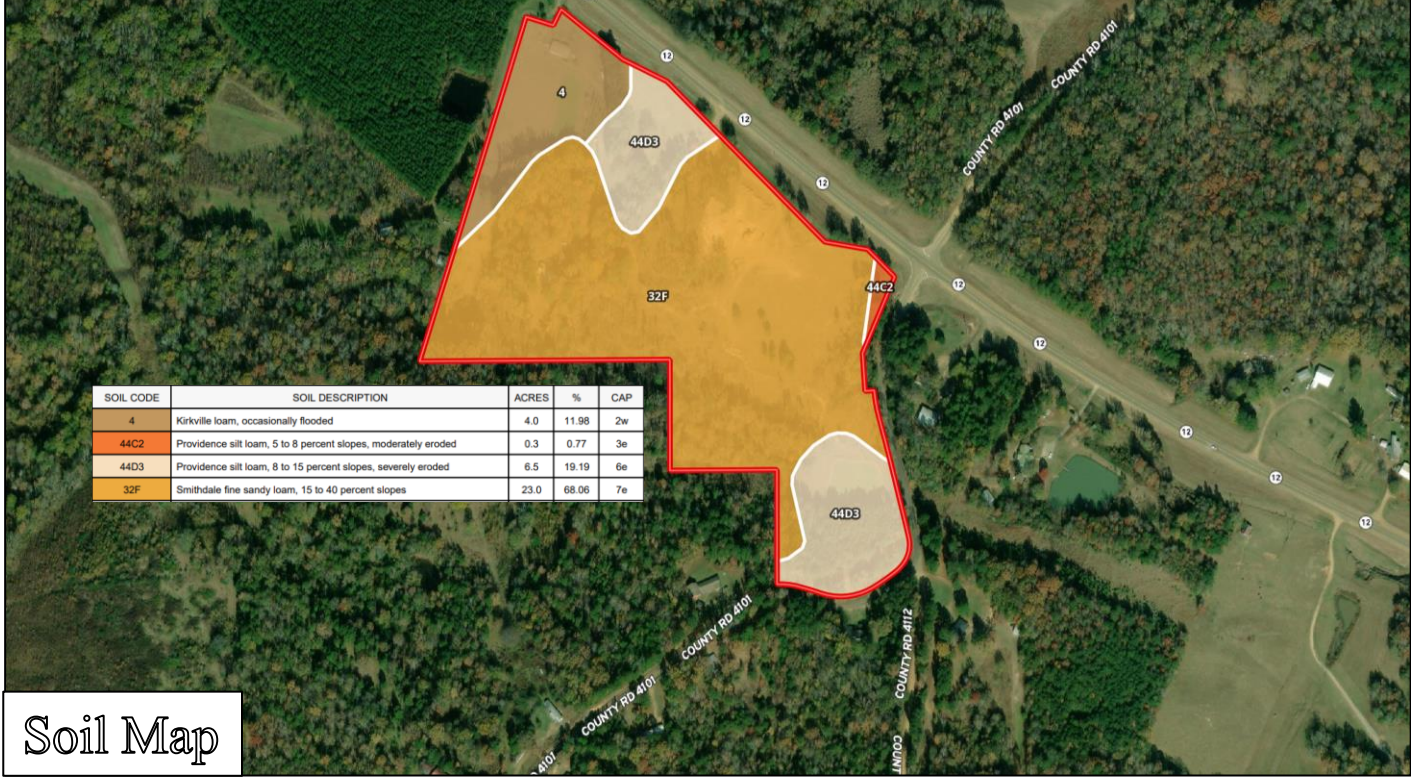


ADAM HESTER, REALTOR®
Adam@TomSmithLand.com
601.898.2772 office | 601.506.5058 cell



TomSmithLandandHomes.com

Information is believed to be accurate but not guaranteed.



Directions from Durant, MS: From the four way stop at the intersection of Highway 12 E and Highway 51, drive east on Highway 12 for 2.1 miles and the property gate will be on your right.
550 Highway 12 Sallis, MS 39160



ADAM HESTER, REALTOR®
Adam@TomSmithLand.com
601.898.2772 office | 601.506.5058 cell



TomSmithLandandHomes.com

Information is believed to be accurate but not guaranteed.