

COUNTRY LIVING IN THE PISGAH SCHOOL DISTRICT

21+/- ACRES IN RANKIN COUNTY, MS



\$313,950

21+/- acres available with MANY OPTIONS in the Pisgah School District! Build your home right in the middle of this Rankin County, MS tract, split it and build two homes, or develop it into smaller lots. The heavily timbered tract is located less than one mile from the highly sought after Pisgah High School. The property offers 1200+ frontage feet along the north side of Sand Hill Road where water and power are available. The property is zoned A-1 (Agricultural General) and the 2019 taxes were \$65.24. If you have been looking for a sizable tract in this area, give Michael Oswalt a call for your private showing today.

DIRECTIONS From Brandon, MS: Travel northwest on MS-471 toward Old Hwy 471 for 6.7 miles. Travel towards Carthage, in 0.3 miles merge onto MS-25-N and travel 6.7 miles. Take the exit toward MS-471/Goshen Springs, travel 0.2 miles. Turn right onto Sand Hill Road, travel 1.5 miles, the property is on the left. Click [Here](#) for directions.



2011-2020
BEST
BROKERAGES

REALTORS'
LAND
INSTITUTE
KLI MISSISSIPPI CHAPTER

MORE THAN
10K
FOLLOWERS
ON FACEBOOK

Call me today!

MICHAEL OSWALT, ASSOC. BROKER
Michael@TomSmithLand.com
601.898.2772 **office** | 662.719.3967 **cell**
Licensed in MS, AR & MO



**Tom
Smith
LAND AND
HOMES**

Expect More. Get More.

TomSmithLandandHomes.com

Information is believed to be accurate but not guaranteed.



MICHAEL OSWALT, ASSOC. BROKER
 Michael@TomSmithLand.com
 601.898.2772 office | 662.719.3967 cell
 Licensed in MS, AR & MO



TomSmithLandandHomes.com

Information is believed to be accurate but not guaranteed.



MICHAEL OSWALT, ASSOC. BROKER
 Michael@TomSmithLand.com
 601.898.2772 **office** | 662.719.3967 **cell**
 Licensed in MS, AR & MO



TomSmithLandandHomes.com

Information is believed to be accurate but not guaranteed.



AERIAL MAP

Click [HERE](#) for an Interactive Map

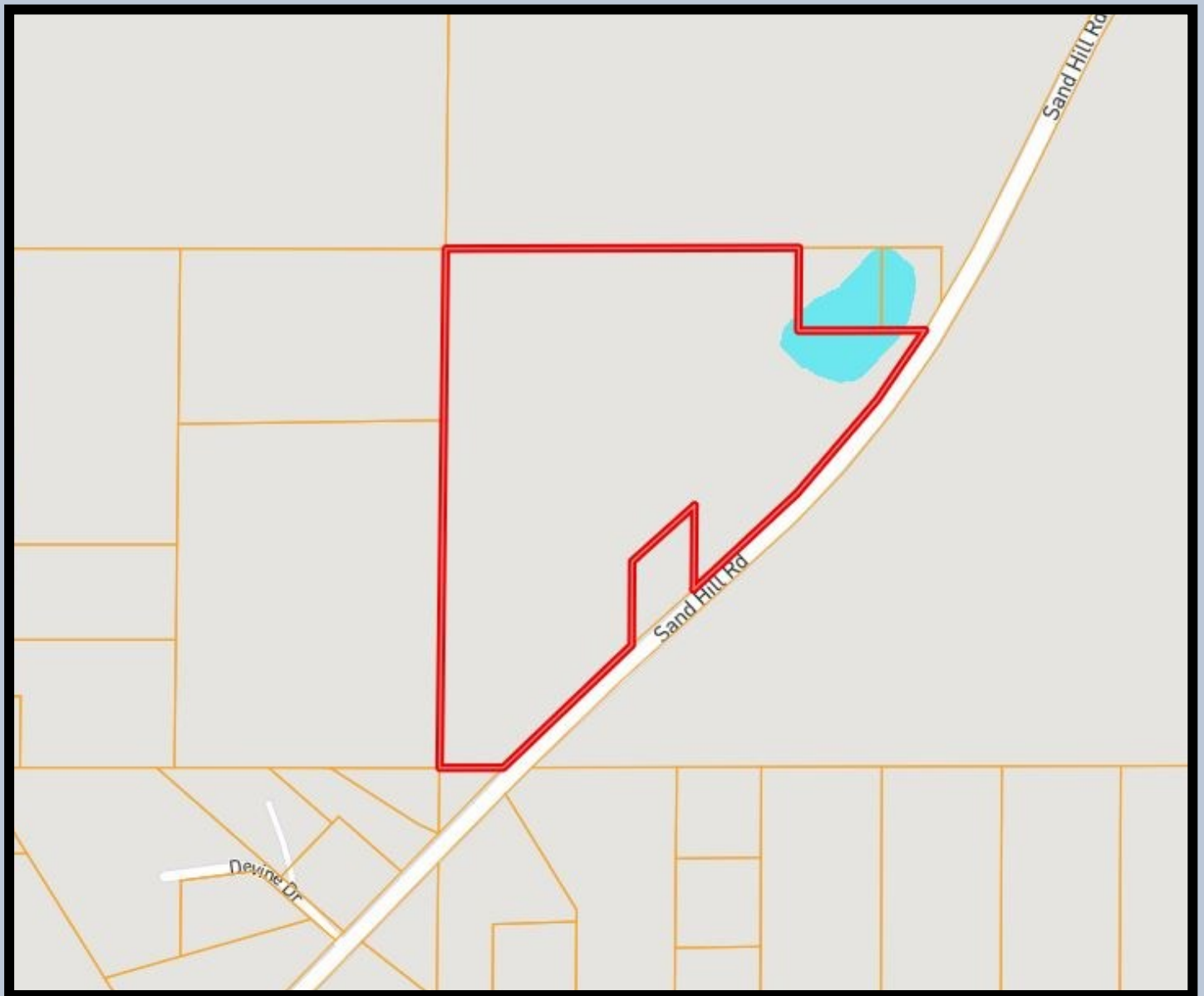


MICHAEL OSWALT, ASSOC. BROKER
 Michael@TomSmithLand.com
 601.898.2772 **office** | 662.719.3967 **cell**
 Licensed in MS, AR & MO



TomSmithLandandHomes.com

Information is believed to be accurate but not guaranteed.



OWNERSHIP MAP

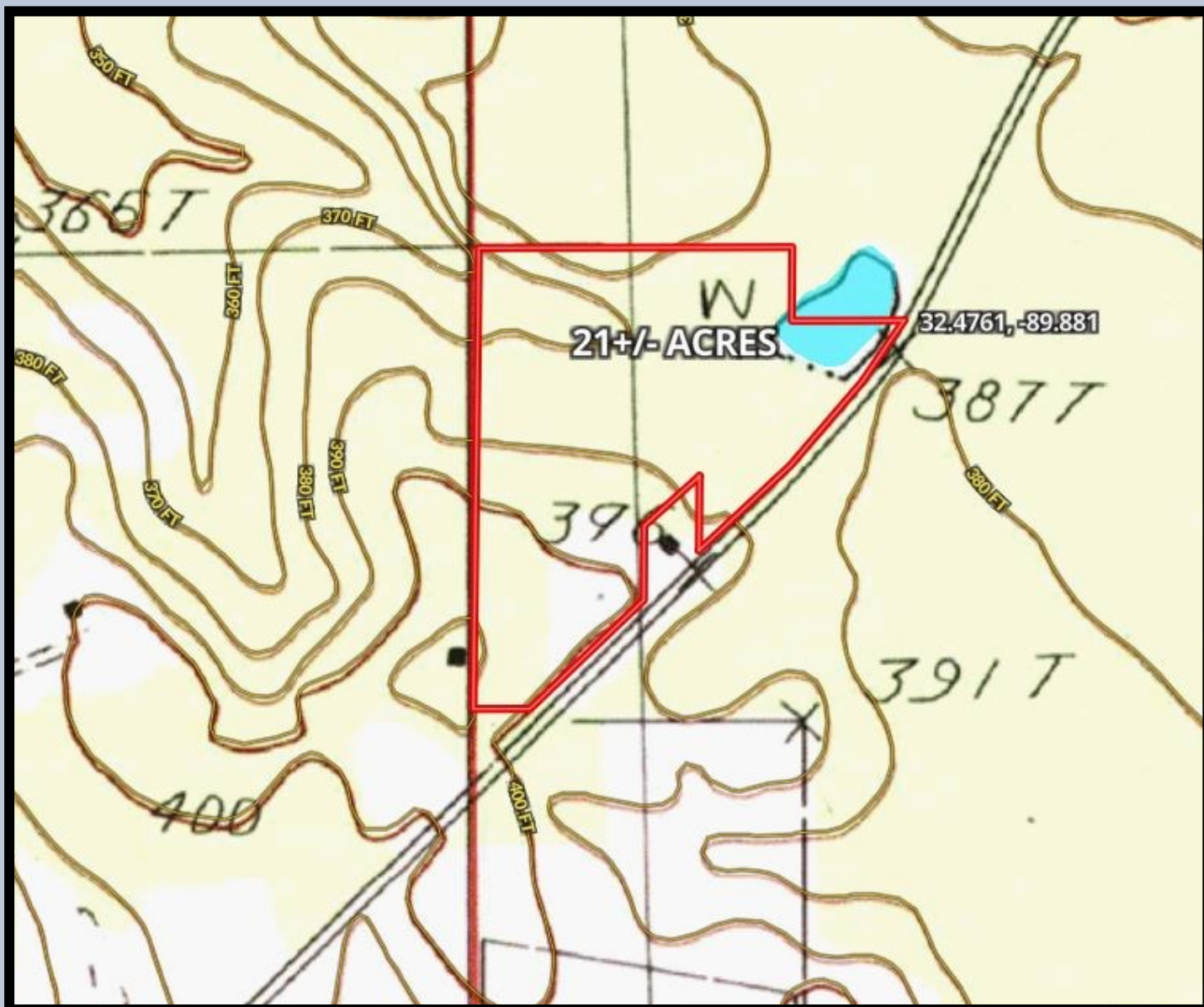


MICHAEL OSWALT, ASSOC. BROKER
Michael@TomSmithLand.com
601.898.2772 **office** | 662.719.3967 **cell**
Licensed in MS, AR & MO



TomSmithLandandHomes.com

Information is believed to be accurate but not guaranteed.



TOPO MAP

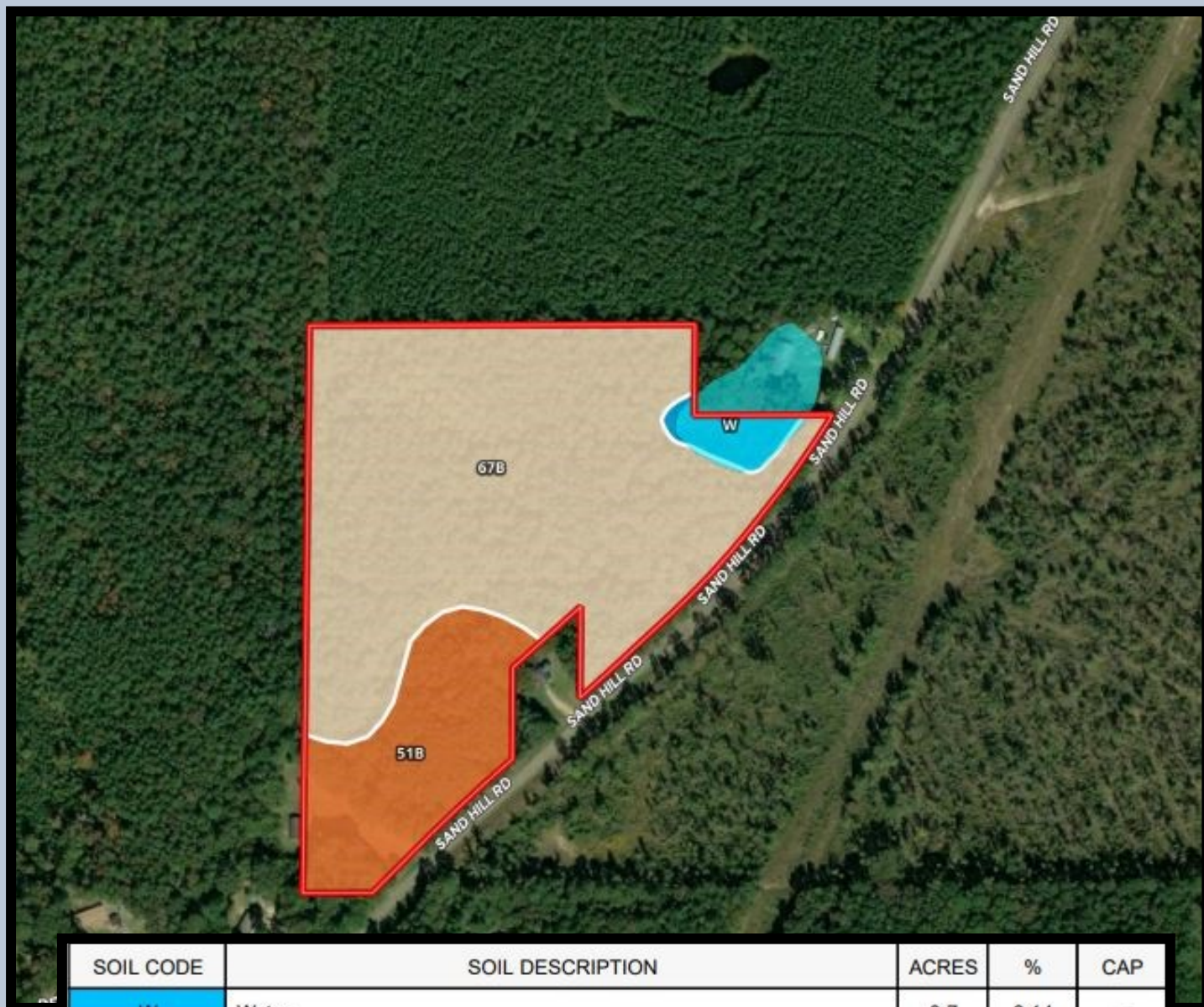


MICHAEL OSWALT, ASSOC. BROKER
Michael@TomSmithLand.com
601.898.2772 office | 662.719.3967 cell
Licensed in MS, AR & MO



TomSmithLandandHomes.com

Information is believed to be accurate but not guaranteed.



SOIL MAP

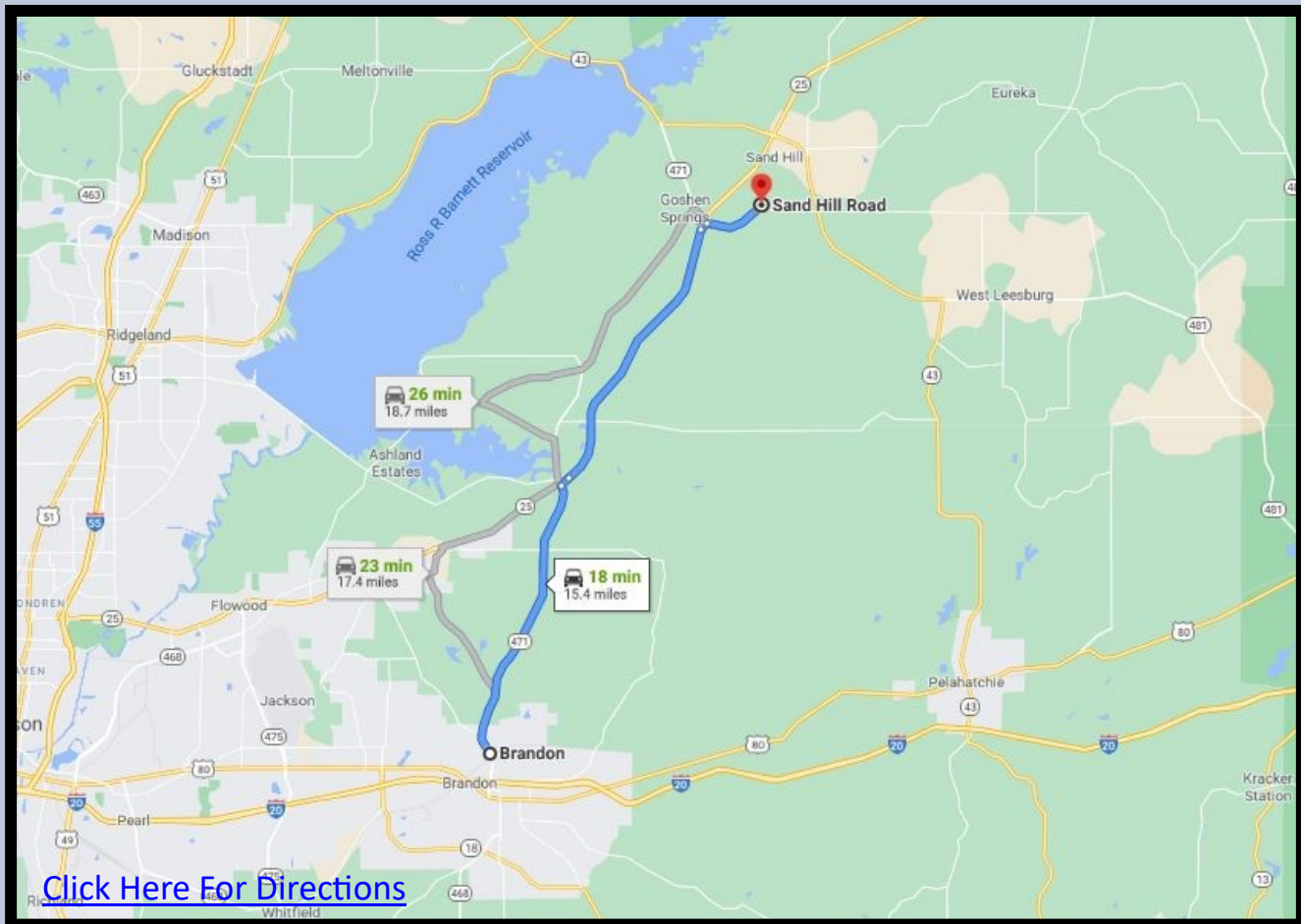


MICHAEL OSWALT, ASSOC. BROKER
 Michael@TomSmithLand.com
 601.898.2772 office | 662.719.3967 cell
 Licensed in MS, AR & MO



TomSmithLandandHomes.com

Information is believed to be accurate but not guaranteed.



[Click Here For Directions](#)

DIRECTIONAL MAP

DIRECTIONS From Brandon, MS: Travel northwest on MS-471 toward Old Hwy 471 for 6.7 miles. Travel towards Carthage, in 0.3 miles merge onto MS-25-N and travel 6.7 miles. Take the exit toward MS-471/Goshen Springs, travel 0.2 miles. Turn right onto Sand Hill Road, travel 1.5 miles, the property is on the left.



MORE THAN
10K
FOLLOWERS
ON FACEBOOK

call me today!

MICHAEL OSWALT, ASSOC. BROKER

Michael@TomSmithLand.com

601.898.2772 **office** | 662.719.3967 **cell**

Licensed in MS, AR & MO



Expect More. Get More.

TomSmithLandandHomes.com

Information is believed to be accurate but not guaranteed.