



## 59+/- Acre Farm with a Home Jasper County, MS



**\$299,900**

149 County Road 51313 Rose Hill, MS, 39356

This charming three bedroom, two bath home is situated on 59+/- gorgeous acres in Rose Hill, MS. The 1,488+/- square foot home offers a wrap-around porch and is nestled off the road with the rear porch overlooking the largest pond on the property that happens to be well stocked with catfish. The interior of the home boasts 9 foot ceilings throughout with a large living room that flows seamlessly to the dining room and kitchen. Approximately 1,200 square feet of garage workspace is under the main living area. Improved pastures, hardwood timber, a white sand creek, two ponds and gently rolling hills make up this property. There is also a barn, a good internal road system, lots of creek frontage, and plenty of road frontage on CR 5131. This must see Jasper County property is located approximately five miles from Interstate 59 at Enterprise, MS and twenty minutes south of Meridian. Call Blake to schedule a private viewing!

Directions from MS-513 S Toward County Road 5131 in Rose Hill, MS: Turn right onto County Road 51313. Travel 0.2 miles and turn right to stay on County Road 51313. Travel 0.4 miles and turn right. The property will be on the right.



*call me today!*

**BLAKE SASSER, REALTOR®**  
Blake@TomSmithLand.com  
601.990.5070 office | 601-757-5027 cell



**TomSmithLandandHomes.com**





**BLAKE SASSER**, REALTOR®  
 Blake@TomSmithLand.com  
 601.990.5070 office | 601-757-5027 cell



**TomSmithLandandHomes.com**





**BLAKE SASSER**, REALTOR®  
 Blake@TomSmithLand.com  
 601.990.5070 office | 601-757-5027 cell



**TomSmithLandandHomes.com**





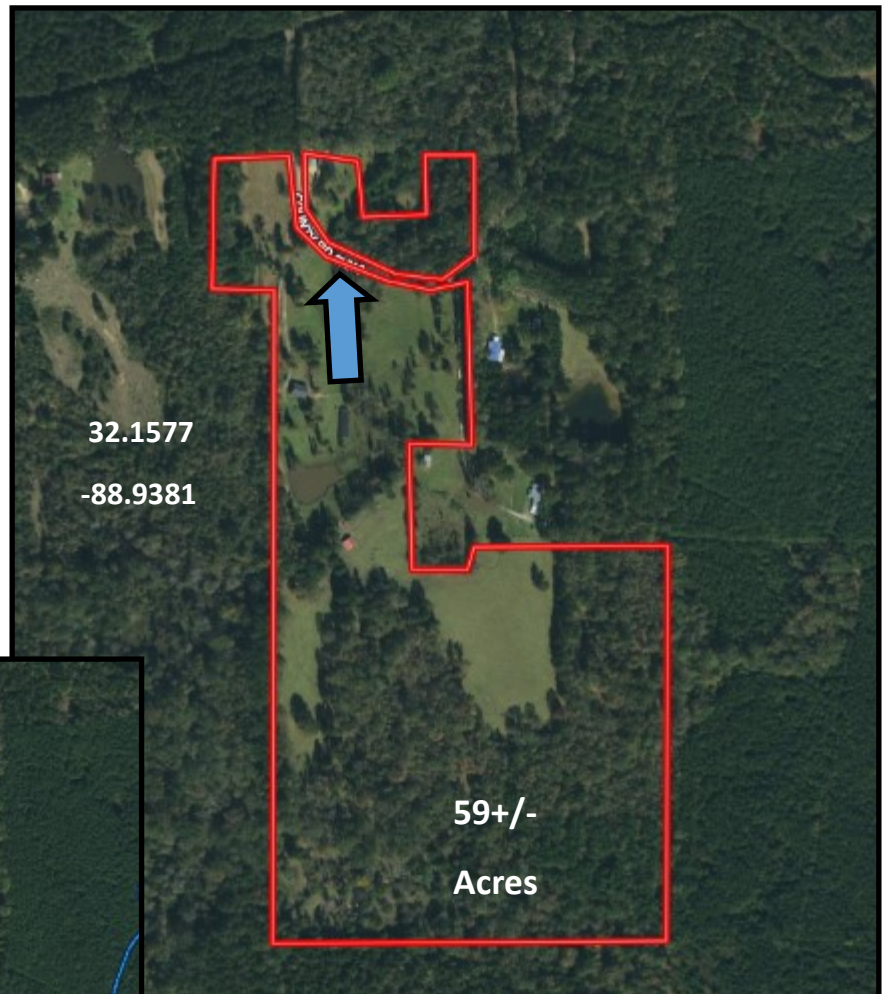
**BLAKE SASSER**, REALTOR®  
Blake@TomSmithLand.com  
601.990.5070 office | 601-757-5027 cell



**TomSmithLandandHomes.com**



## Aerial Map



## Flood Map

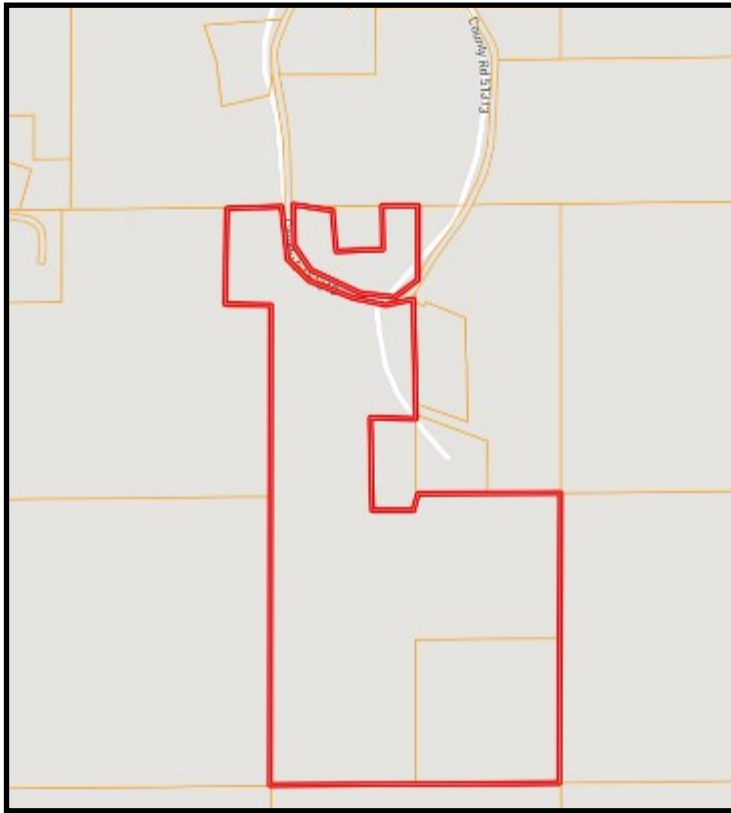


**BLAKE SASSER**, REALTOR®  
Blake@TomSmithLand.com  
601.990.5070 office | 601-757-5027 cell



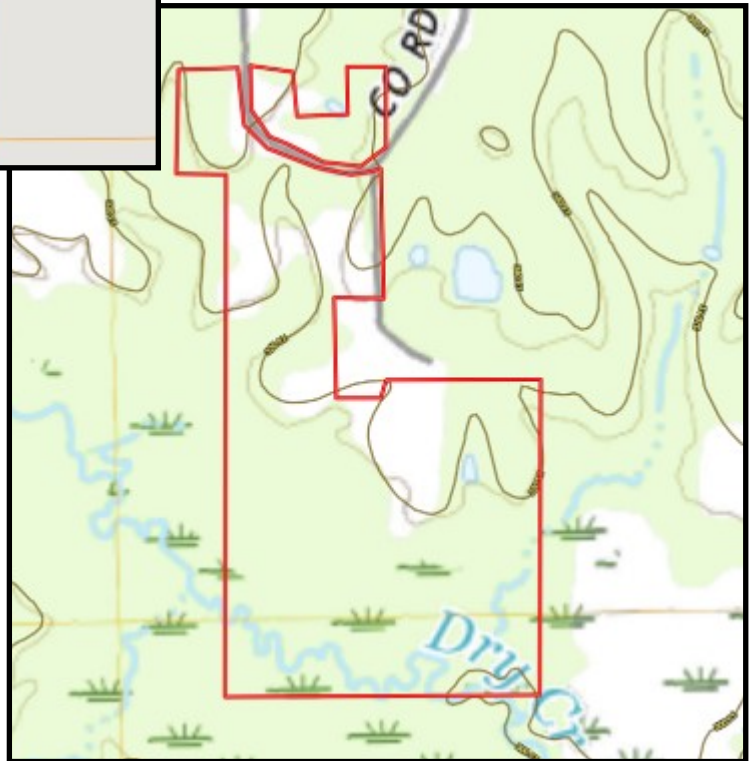
**TomSmithLandandHomes.com**

Information is believed to be accurate but not guaranteed.



Ownership  
Map

Topography  
Map



**BLAKE SASSER**, REALTOR®  
 Blake@TomSmithLand.com  
 601.990.5070 **office** | 601-757-5027 **cell**



**TomSmithLandandHomes.com**

Information is believed to be accurate but not guaranteed.

