

52+/- Acre Recreational Hunting with a Camp Webster County, MS



\$104,000

Looking for an affordable place to get-away? This 52+/- acre property in Webster County, MS is near the Bellefontaine community and would be the ideal place for some recreational downtime. This property features an abundance of frontage on Haney Road, scattered mature hardwood timber, and a small camp house. A seasonal creek traverses the Northern portion of the property offering a water source for the abundant wildlife. This property is in the Eupora School District and is located approximately 15 minutes from Bellefontaine. Utilities are available at Haney Road. For more information, or to schedule a showing, call Harper Day today!

Directions From Bellefontaine, MS: Travel west on MS-404 W for 2.8 miles. Turn left onto Embry Road and travel 2.9 miles. Turn left onto Haney Road and travel 1.5 miles. The property will be on your right. [INTRACTIONE MAP HERE](#)



call me today!

HARPER DAY, REALTOR®
Harper@TomSmithLand.com
662.268.6333 office | 662.694.9751 cell



TomSmithLandandHomes.com

Information is believed to be accurate but not guaranteed.



Aerial Map



2011-2020
BEST
BROKERAGES

call me today!

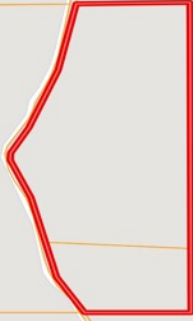
HARPER DAY, REALTOR®
Harper@TomSmithLand.com
662.268.6333 office | 662.694.9751 cell



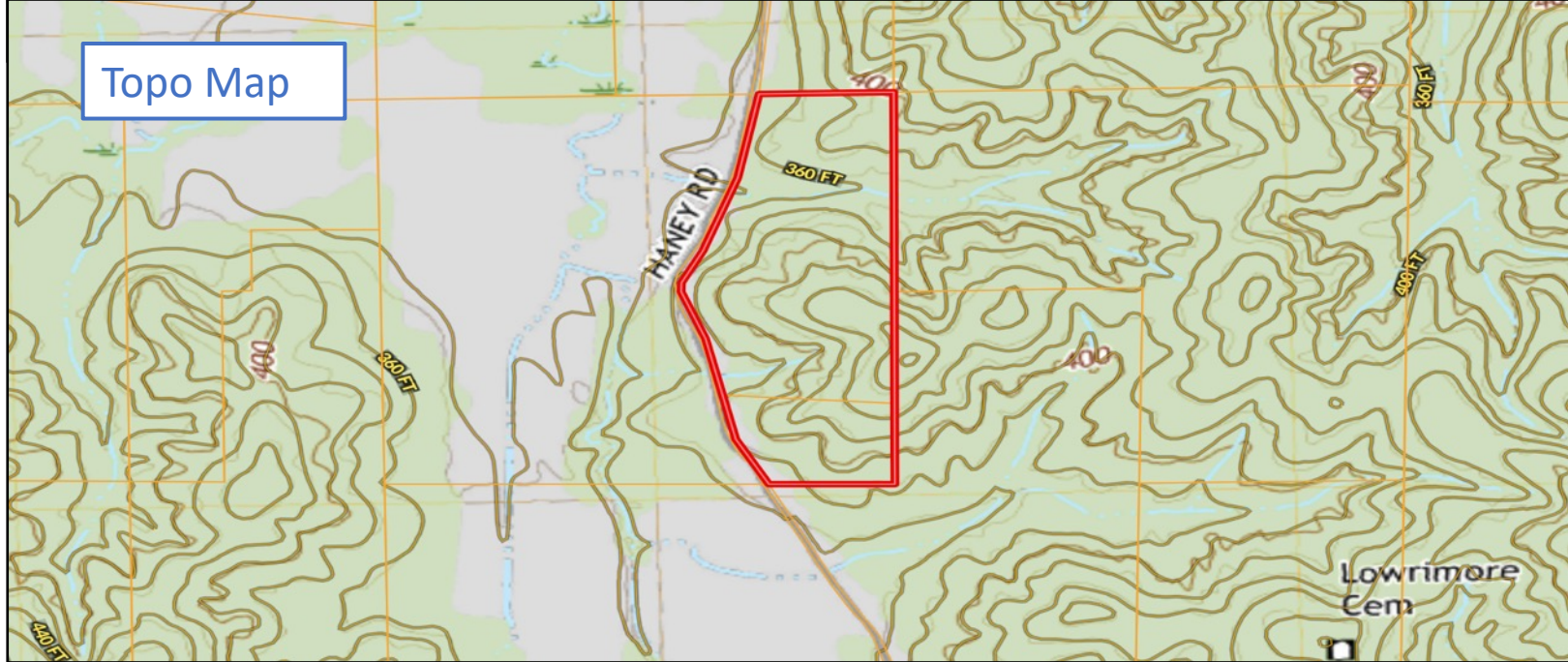
TomSmithLandandHomes.com

Information is believed to be accurate but not guaranteed.

Ownership Map



Topo Map



2011-2020
BEST
BROKERAGES

call me today!

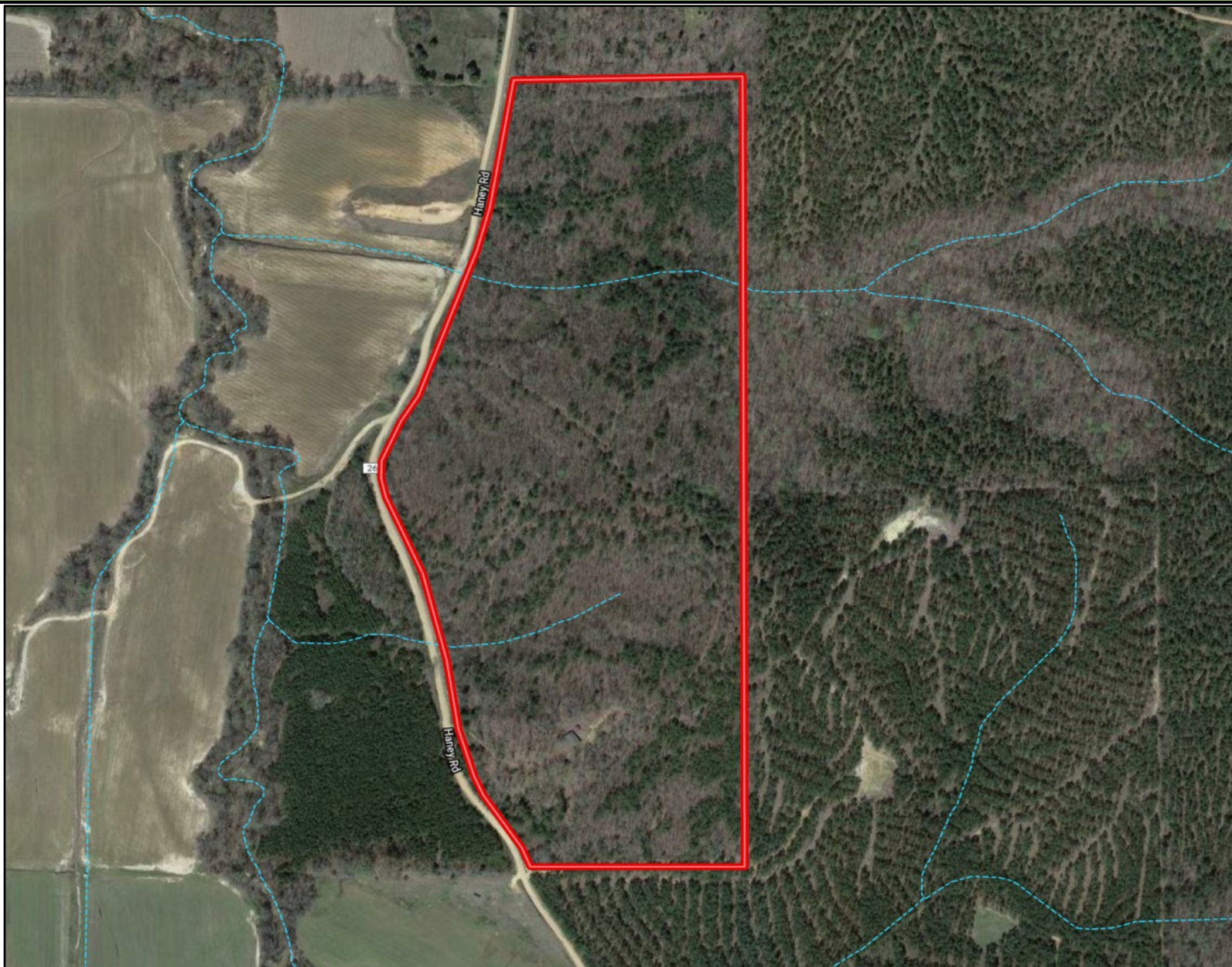
HARPER DAY, REALTOR®
Harper@TomSmithLand.com
662.268.6333 office | 662.694.9751 cell



TomSmithLandandHomes.com

Information is believed to be accurate but not guaranteed.

FEMA Flood and Water Feature Map



2011-2020
BEST
BROKERAGES

call me today!

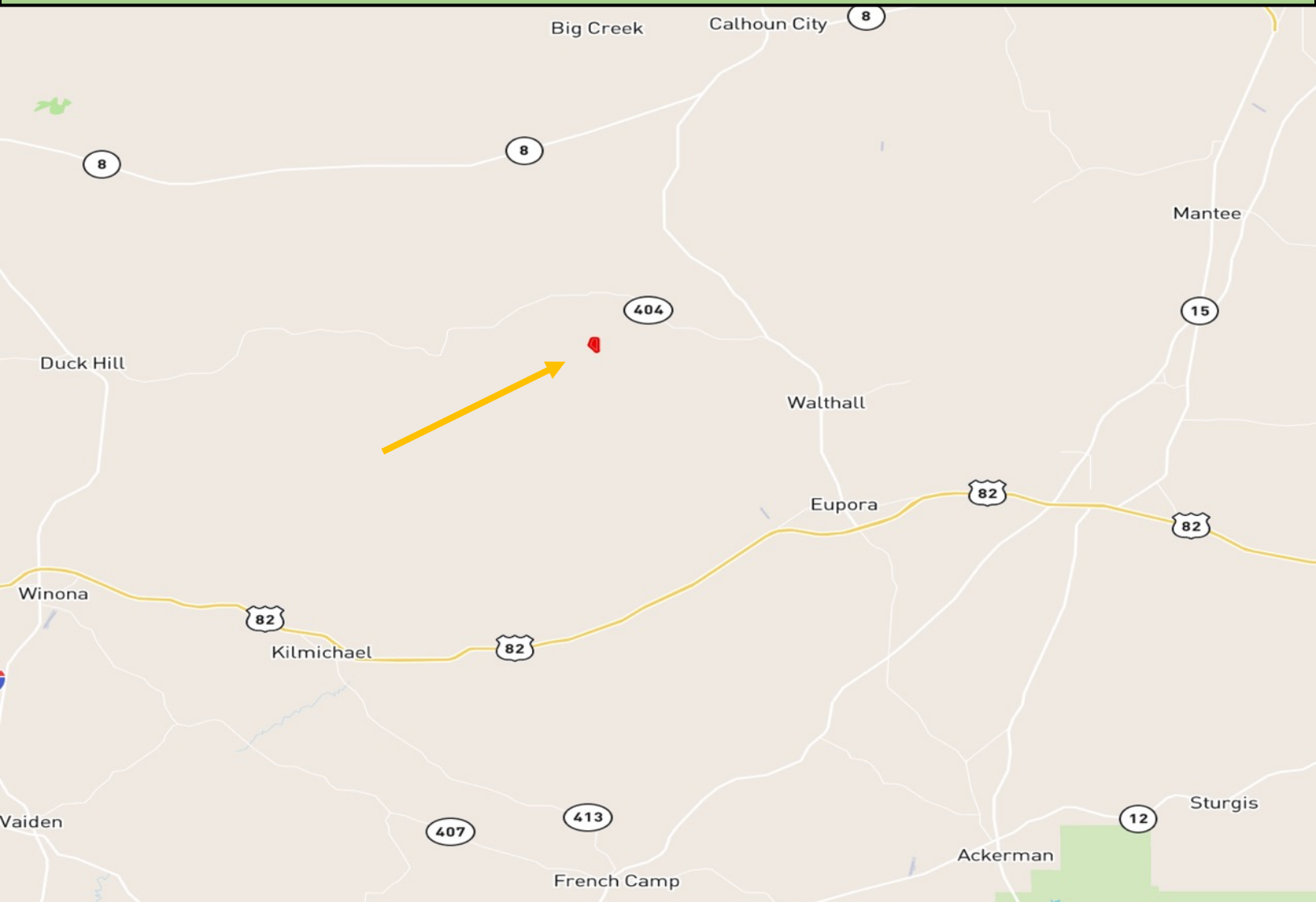
HARPER DAY, REALTOR®
Harper@TomSmithLand.com
662.268.6333 office | 662.694.9751 cell



TomSmithLandandHomes.com

Information is believed to be accurate but not guaranteed.

Directional Map



Directions From Bellefontaine, MS: Travel west on MS-404 W for 2.8 miles. Turn left onto Embry Road and travel 2.9 miles. Turn left onto Haney Road and travel 1.5 miles. The property will be on your right. [INTRACTIONE MAP HERE](#)



2011-2020
AMERICA'S
BEST
BROKERAGES

call me today!

HARPER DAY, REALTOR®
Harper@TomSmithLand.com
662.268.6333 office | 662.694.9751 cell



TomSmithLandandHomes.com

Information is believed to be accurate but not guaranteed.