



SECLUDED RECREATIONAL OASIS

11+/- Acres in Scott County, MS



Looking for a place to get away? Take a look at this secluded 11 +/- acre recreational tract in Scott County, MS. The serene setting offers many hardwoods with a few pines scattered throughout. An unfinished, 16x24, two story cabin with a metal roof is on site; add your personal touch to create your dream weekend getaway. Power lines run throughout the property creating food plot opportunities. Utilities are available nearby. There is no direct access to this property. Call Robin or Pete to schedule a showing.

Directions from I-20: From I-20 in Forest travel north on Hwy 35. Turn left on South Coleman Road. Go to the dead end. Land can be accessed through power line easement.

244 South Coleman Road. Forest, MS



ROBIN ADAMS, REALTOR®
Robin@TomSmithHomes.com
601.898.2772 office | 601.502.3877 cell



call us today!



PETE PRISCOCK, REALTOR®
Pete@TomSmithHomes.com
601.898.2772 office | 601.291.5863 cell

TomSmithLandandHomes.com

Information is believed to be accurate but not guaranteed





Expect More. Get More.

ROBIN ADAMS, REALTOR®
Robin@TomSmithHomes.com
601.898.2772 office | 601.502.3877 cell

PETE PRISOCK, REALTOR®
Pete@TomSmithHomes.com
601.898.2772 office | 601.291.5863 cell

TomSmithLandandHomes.com

Information is believed to be accurate but not guaranteed.





Expect More. Get More.

ROBIN ADAMS, REALTOR®
Robin@TomSmithHomes.com
601.898.2772 office | 601.502.3877 cell

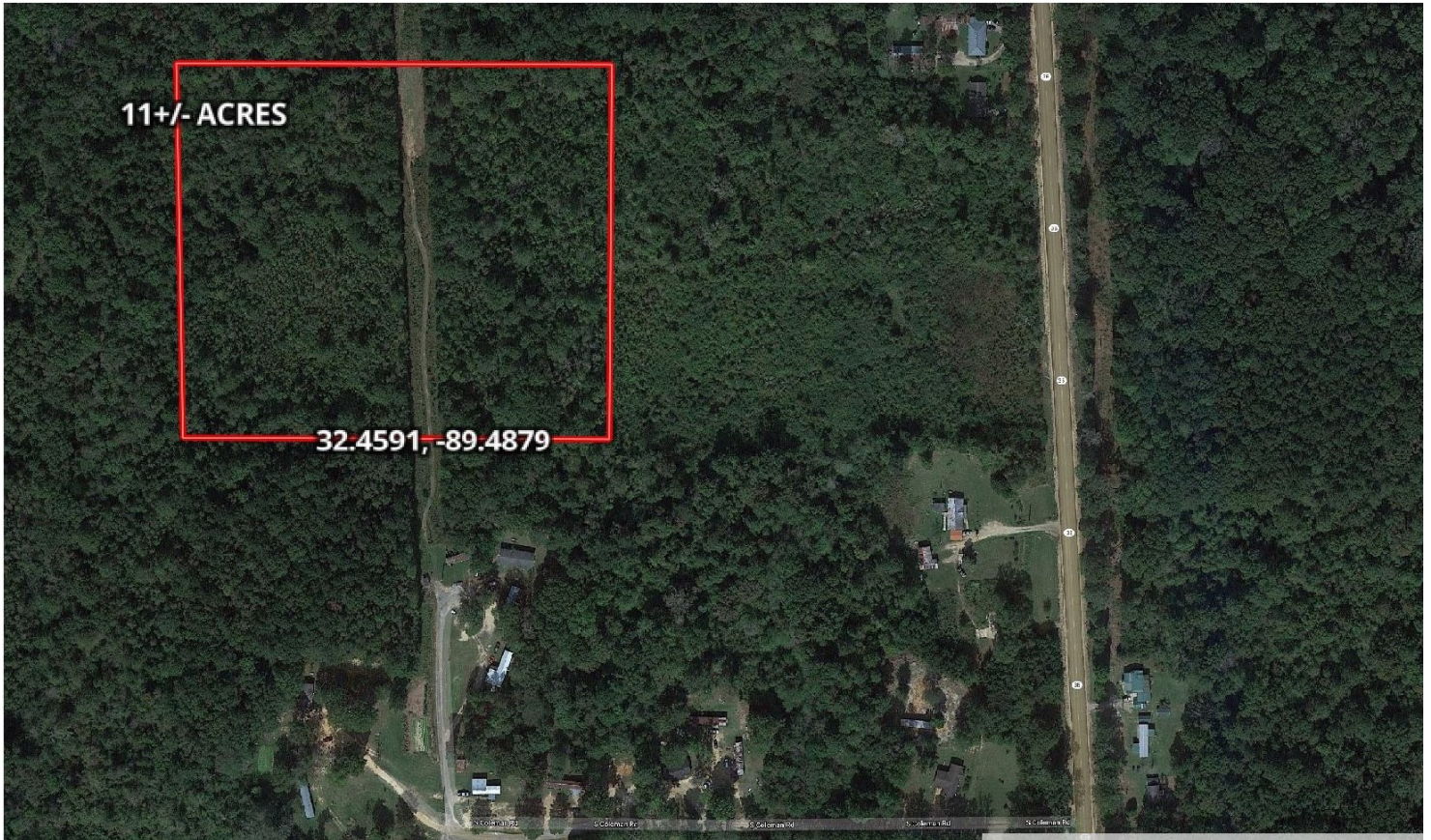
PETE PRISOCK, REALTOR®
Pete@TomSmithHomes.com
601.898.2772 office | 601.291.5863 cell

TomSmithLandandHomes.com

Information is believed to be accurate but not guaranteed.



AERIAL MAP



Click [HERE](#) for an Interactive Map



ROBIN ADAMS, REALTOR®
Robin@TomSmithHomes.com
601.898.2772 office | 601.502.3877 cell

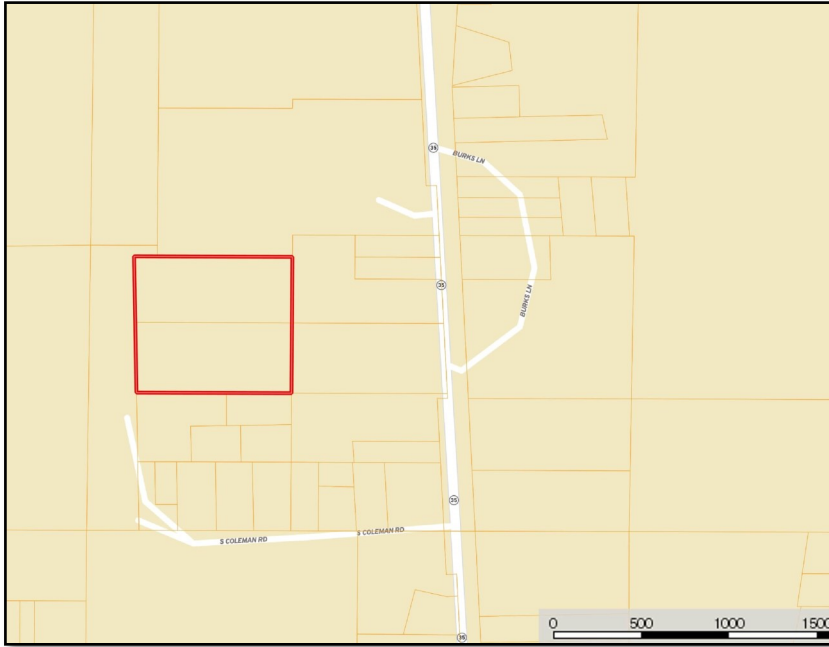
Expect More. Get More.

PETE PRISOCK, REALTOR®
Pete@TomSmithHomes.com
601.898.2772 office | 601.291.5863 cell

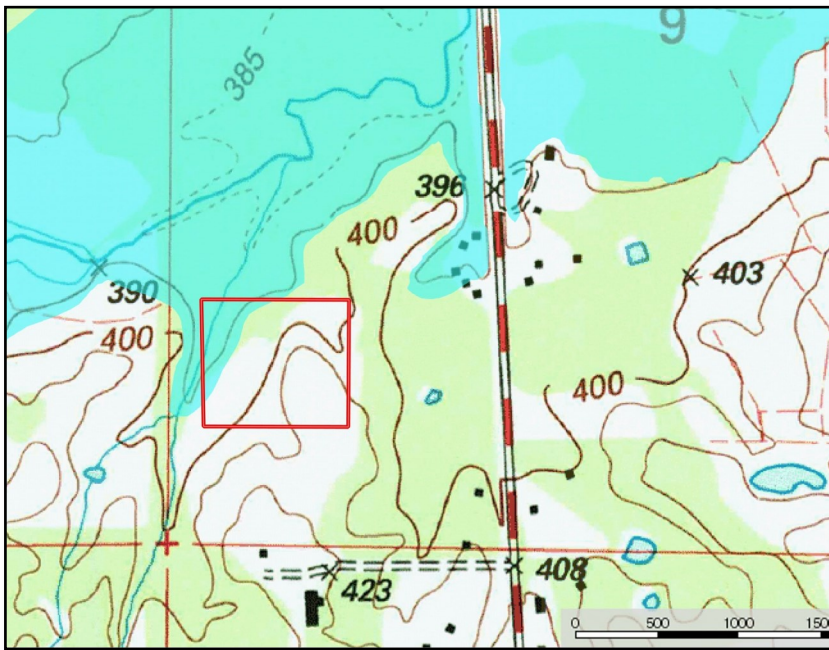
TomSmithLandandHomes.com

Information is believed to be accurate but not guaranteed.





OWNERSHIP MAP



FLOOD MAP



ROBIN ADAMS, REALTOR®
 Robin@TomSmithHomes.com
 601.898.2772 office | 601.502.3877 cell

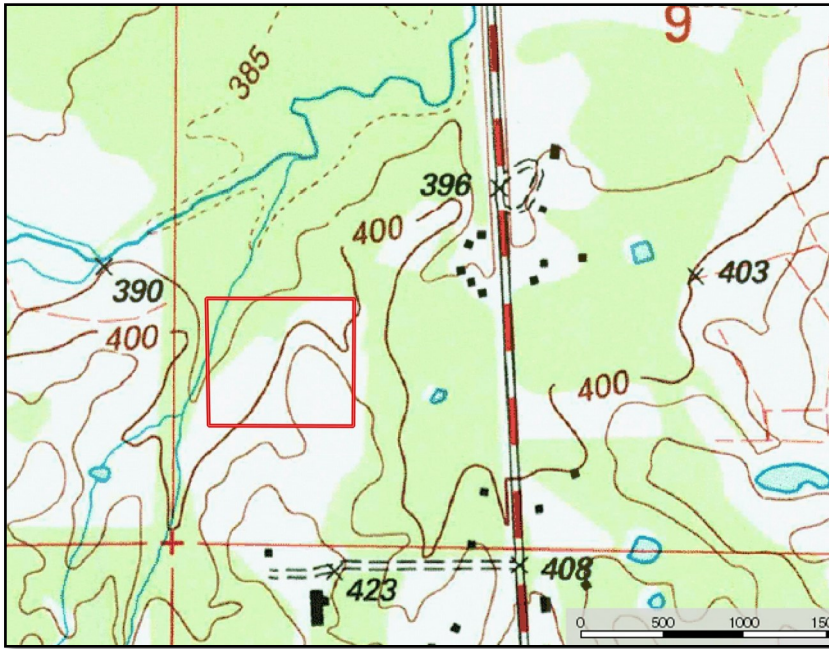
Expect More. Get More.

PETE PRISOCK, REALTOR®
 Pete@TomSmithHomes.com
 601.898.2772 office | 601.291.5863 cell

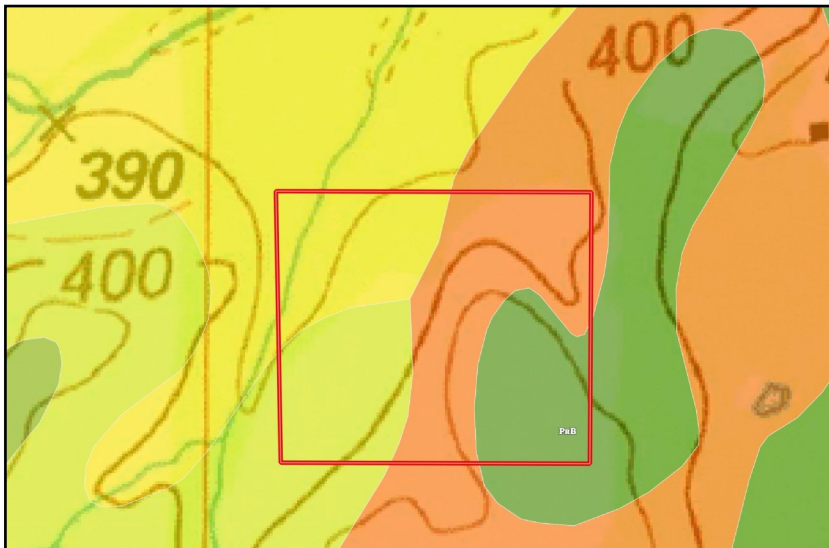
TomSmithLandandHomes.com

Information is believed to be accurate but not guaranteed.





TOPO MAP



SOIL MAP

SOIL CODE	SOIL DESCRIPTION	ACRES	%	CAP
Mo	Morganfield silt loam, 0 to 2 percent slopes, occasionally flooded	6.4	26.03	2w
MeB2	Memphis silt loam, 2 to 5 percent slopes, eroded, south	0.0	0.01	2e
MNE	Memphis-Natchez association, 12 to 50 percent slopes	4.3	17.36	7e
MeC2	Memphis silt loam, 5 to 8 percent slopes, eroded	4.8	19.36	3e
W	Water	0.9	3.56	-
GuE	Gullied land-Memphis complex, 5 to 30 percent slopes	8.3	33.68	7e



ROBIN ADAMS, REALTOR®
Robin@TomSmithHomes.com
601.898.2772 office | 601.502.3877 cell

PETE PRISOCK, REALTOR®
Pete@TomSmithHomes.com
601.898.2772 office | 601.291.5863 cell

TomSmithLandandHomes.com

Information is believed to be accurate but not guaranteed.



DIRECTIONAL MAP



DIRECTIONS FROM I20: From I20 in Forest travel north on Hwy 35. Turn left on South Coleman Road. Go to the dead end.
Land can be accessed through power line easement.

244 South Coleman Road. Forest, MS



ROBIN ADAMS, REALTOR®
Robin@TomSmithHomes.com
601.898.2772 office | 601.502.3877 cell



call us today!



PETE PRISOCK, REALTOR®
Pete@TomSmithHomes.com
601.898.2772 office | 601.291.5863 cell

TomSmithLandandHomes.com

Information is believed to be accurate but not guaranteed

