

84+/- Acre Pine Timber Hunting Tract Webster County, MS



\$121,800

Have you been searching for a small acreage tract that can provide timber growth, recreational opportunities, and homesite potential? Look at this 84+/- acre tract located in rural Webster County, MS. The property offers paved frontage on both Fisher and Sarepta Road, making access quick and convenient. The property is in the Eupora School District, and is just seven minutes from Stewart, MS. This property also features a small, seasonal creek that provides a water source for wildlife. The property primarily consists of six-year-old plantation pine. The southeastern most portion would be suitable for a homesite. Utilities are available on Fisher Road. For more information, or to schedule a private showing, please call Harper Day today!

Directions From Stewart, MS: Travel 0.5 miles west on US-82 toward Union Church Road. Turn right onto Stewart Lodi Road and travel 2.3 miles. Turn left onto Fisher Road and travel 0.4 miles. The property will be on both sides of the road.

[INTERACTIVE MAP HERE](#)



call me today!

HARPER DAY, REALTOR®
Harper@TomSmithLand.com
662.268.6333 office | 662.694.9751 cell



TomSmithLandandHomes.com

Information is believed to be accurate but not guaranteed.



2011-2020
BEST
BROKERAGES

call me today!

HARPER DAY, REALTOR®
Harper@TomSmithLand.com
662.268.6333 office | 662.694.9751 cell



Expect More. Get More.

TomSmithLandandHomes.com

Information is believed to be accurate but not guaranteed.

Aerial Map



84+/- Acres

FISHER RD

SWEET RD

33.4788,-89,456



2011-2020
BEST
BROKERAGES

call me today!

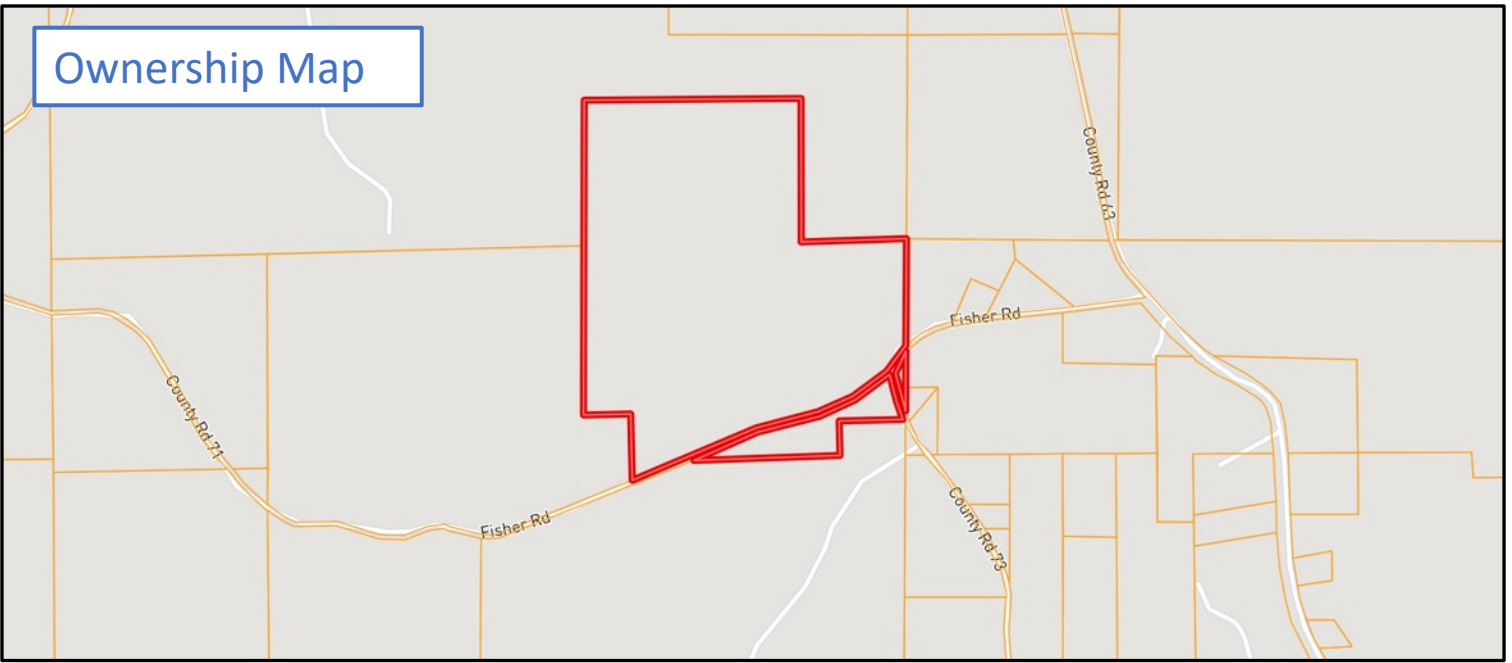
HARPER DAY, REALTOR®
Harper@TomSmithLand.com
662.268.6333 office | 662.694.9751 cell



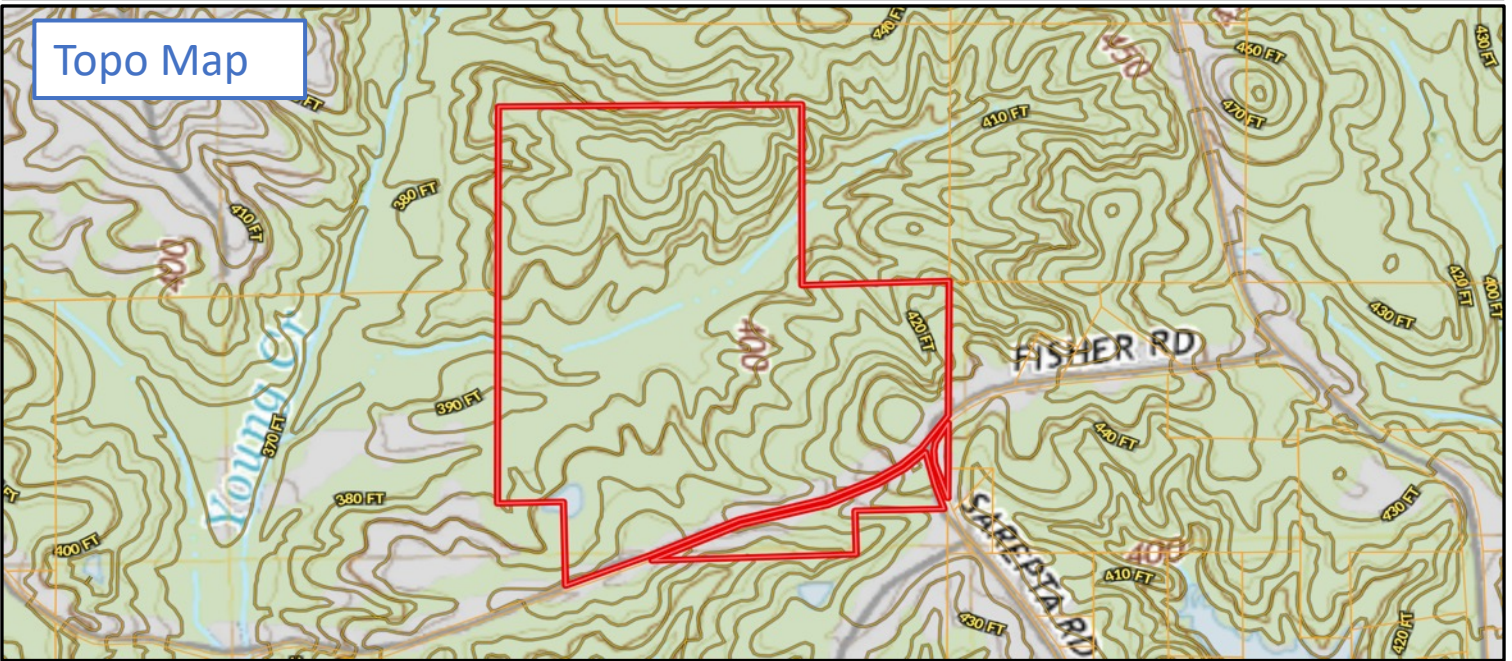
TomSmithLandandHomes.com

Information is believed to be accurate but not guaranteed.

Ownership Map



Topo Map



2011-2020
BEST
BROKERAGES

call me today!

HARPER DAY, REALTOR®
Harper@TomSmithLand.com
662.268.6333 office | 662.694.9751 cell

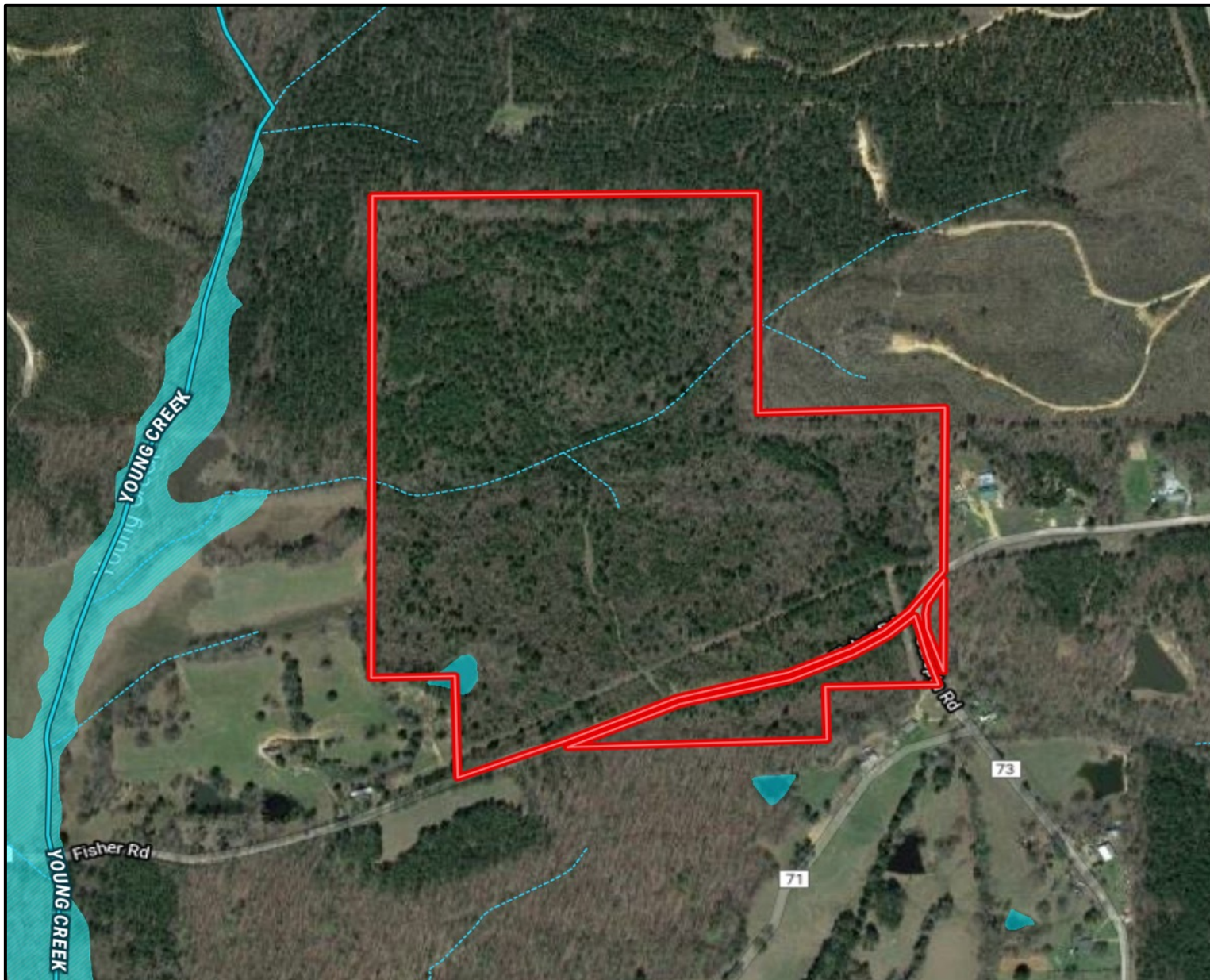


Expect More. Get More.

TomSmithLandandHomes.com

Information is believed to be accurate but not guaranteed.

FEMA Flood and Water Feature Map



call me today!

HARPER DAY, REALTOR®
Harper@TomSmithLand.com
662.268.6333 office | 662.694.9751 cell



TomSmithLandandHomes.com

Information is believed to be accurate but not guaranteed.

Directional Map



Directions From Stewart, MS: Travel 0.5 miles West on US-82 toward Union Church Road. Turn right onto Stewart Lodi Road and travel 2.3 miles. Turn left onto Fisher Road and travel 0.4 miles. The property will be on both sides of the road. [INTERACTIVE MAP HERE](#)



call me today!

HARPER DAY, REALTOR®
Harper@TomSmithLand.com
662.268.6333 office | 662.694.9751 cell



TomSmithLandandHomes.com

Information is believed to be accurate but not guaranteed.