



Historic Home in Downtown Gloster Amite County, MS



\$69,000

510 Union Street Gloster, MS 39638

This historic home situated on 0.62+/- acres in Amite County, MS has tons of charm. With a little work, this house will make a fine home for its next owners. Built in the 1880's, the home offers gorgeous hardwood floors and the wide hallways can't help but remind you of yesteryear. The 1,800+/- square foot home features three bedrooms, two bathrooms and the modern amenities such as the updated kitchen and the central heat and air allow for the comfort you might desire. The spacious yard provides room for relaxing and entertaining. Located on the corner of Union Street and E Tate Street in downtown Gloster, this home is up for grabs! Call Eli today to schedule a tour of this piece of history.

Directions from Hwy 33 West in Gloster, MS: Turn right onto Union Street. Travel 0.3 miles and the home will be on your left. Address: 510 Union Street Gloster, MS 39638



Call me today!

ELI FERGUSON, REALTOR®
Eli@TomSmithLand.com
601.990.5070 office | 601.757.7117 cell



Expect More. Get More.

TomSmithLandandHomes.com

Information is believed to be accurate but not guaranteed.



LandReport
2011-2020
AMERICAN
BEST
BROKERAGES
Proud to be
C2EX
endorsed!

Call me today!

ELI FERGUSON, REALTOR®
Eli@TomSmithLand.com
601.990.5070 office | 601.757.7117 cell



Expect More. Get More.

TomSmithLandandHomes.com

Information is believed to be accurate but not guaranteed.



LandReport
2011-2020
AMERICAN
BEST
BROKERAGES

Proud to be
C2EX
endorsed!

Call me today!

ELI FERGUSON, REALTOR®
Eli@TomSmithLand.com
601.990.5070 office | 601.757.7117 cell



TomSmithLandandHomes.com

Information is believed to be accurate but not guaranteed.



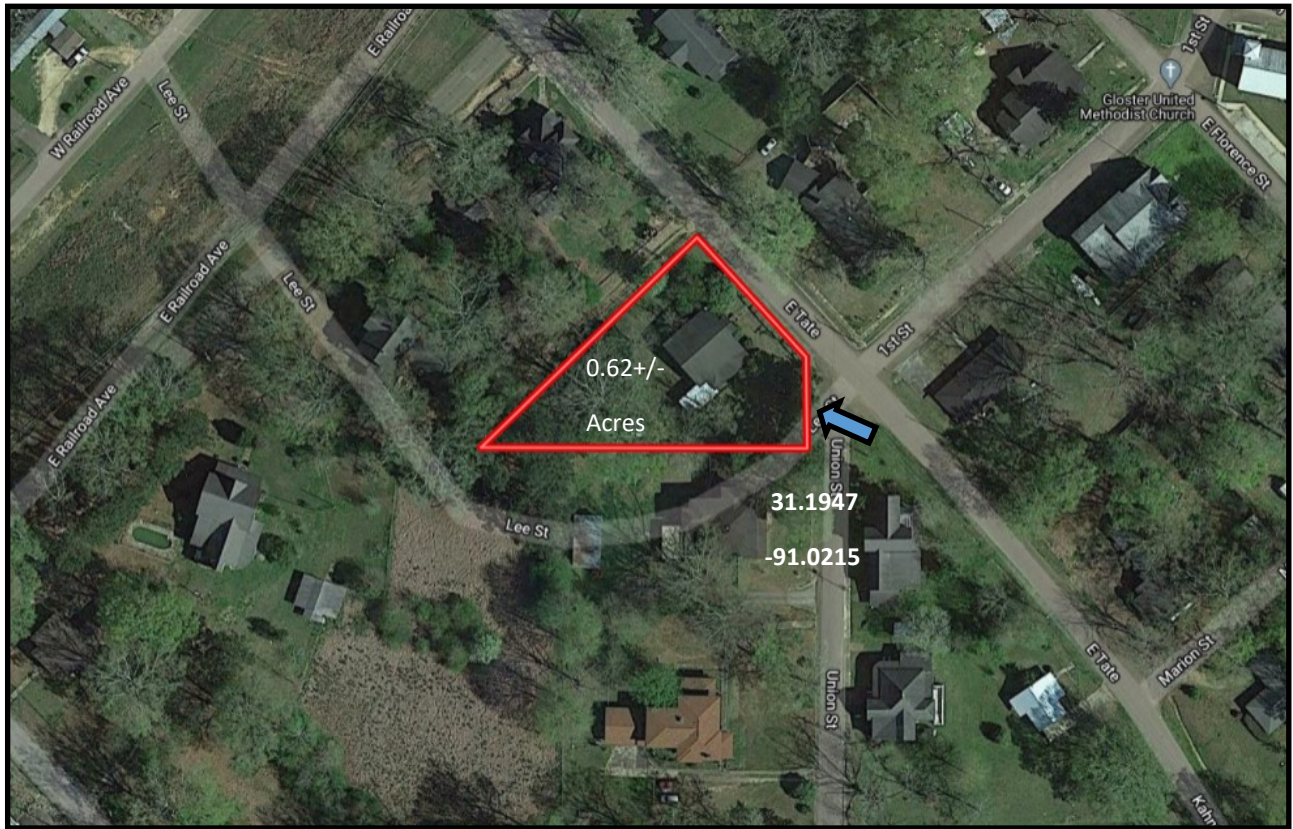
Call me today!

ELI FERGUSON, REALTOR®
Eli@TomSmithLand.com
601.990.5070 office | 601.757.7117 cell



TomSmithLandandHomes.com

Information is believed to be accurate but not guaranteed.



Aerial Map



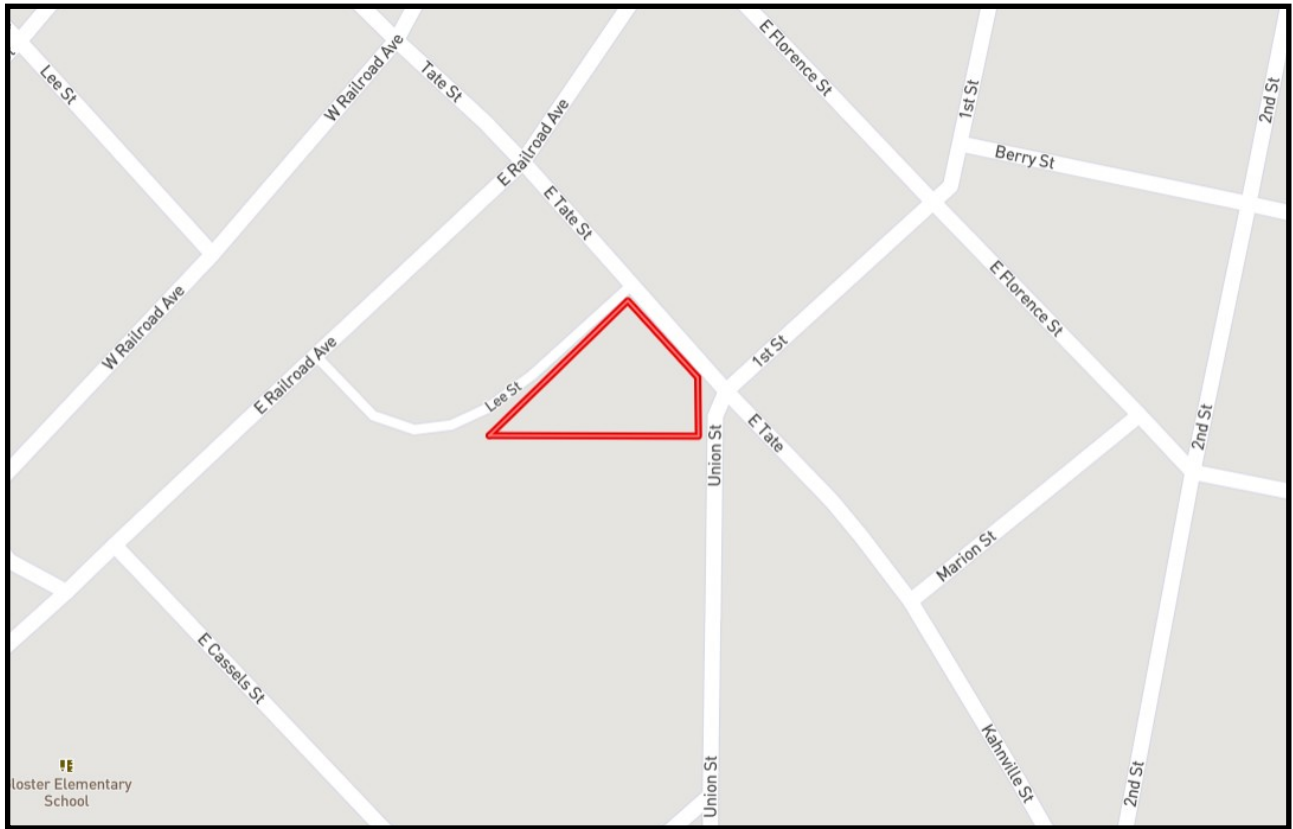
Call me today!

ELI FERGUSON, REALTOR®
Eli@TomSmithLand.com
601.990.5070 office | 601.757.7117 cell



TomSmithLandandHomes.com

Information is believed to be accurate but not guaranteed.



Ownership Map



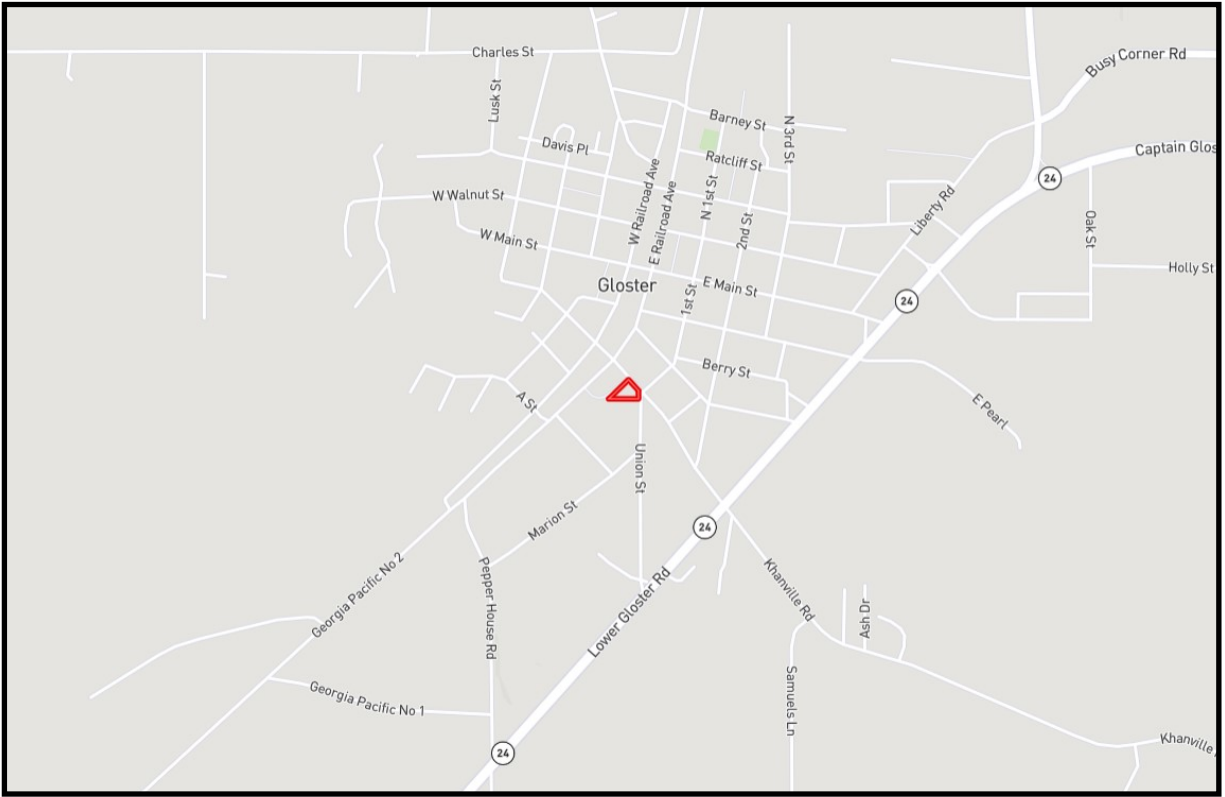
call me today!

ELI FERGUSON, REALTOR®
 Eli@TomSmithLand.com
 601.990.5070 office | 601.757.7117 cell



TomSmithLandandHomes.com

Information is believed to be accurate but not guaranteed.



Directional Map

Directions from Hwy 33 West in Gloster, MS: Turn right onto Union Street. Travel 0.3 miles and the home will be on your left. Address: 510 Union Street Gloster, MS 39638



call me today!

ELI FERGUSON, REALTOR®
Eli@TomSmithLand.com
601.990.5070 office | 601.757.7117 cell



TomSmithLandandHomes.com

Information is believed to be accurate but not guaranteed.