

Cute Cottage in Bolivar County

622 S. Leflore Ave. Cleveland, MS



Agent Owned

\$82,500

Are you looking for a cute cottage in Cleveland, MS? Take a look at this 930+/- square foot, two bedroom, one bath home situated on a .36 acre lot in Bolivar County. The home offers beautiful hardwood floors, a new HVAC unit and a sunroom that could be used as a small office. The backyard is fenced-in and a small storage shed is in place. This is a must see home and would make a great rental property. To schedule a private showing, call Tracey Bell. The property is agent owned.

Directions: From the intersection of Hwy 8 and Hwy 61 in Cleveland, MS travel west on Hwy 8 for approximately 0.6 miles, turn left onto N. Leflore Ave and the destination will be on the right.



Call me today!

TRACEY BELL, MANAGING BROKER

Tracey@TomSmithLand.com

662.441.2500 office | 662.719.4720 cell



Expect More. Get More.

LandReport
2011-2020
BEST
BROKERAGES

TomSmithLandandHomes.com

Information is believed to be accurate but not guaranteed.



TRACEY BELL, MANAGING BROKER
Tracey@TomSmithLand.com
662.441.2500 office | 662.719.4720 cell



TomSmithLandandHomes.com

Information is believed to be accurate but not guaranteed.



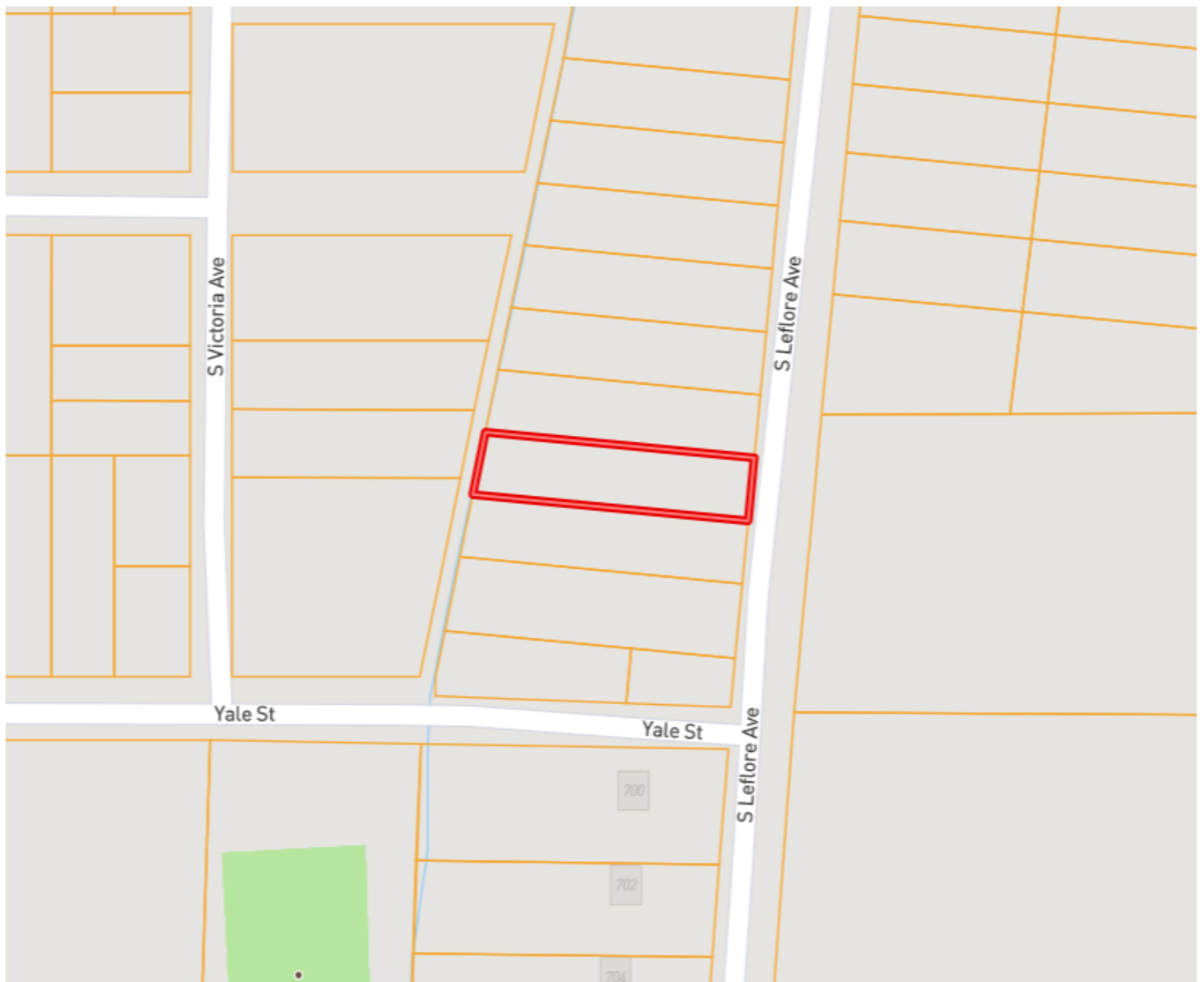
TRACEY BELL, MANAGING BROKER
Tracey@TomSmithLand.com
662.441.2500 office | 662.719.4720 cell



TomSmithLandandHomes.com

Information is believed to be accurate but not guaranteed.

Ownership Map



TRACEY BELL, MANAGING BROKER
Tracey@TomSmithLand.com
662.441.2500 office | 662.719.4720 cell



TomSmithLandandHomes.com

Information is believed to be accurate but not guaranteed.

Aerial Map



[Click for Interactive Map](#)

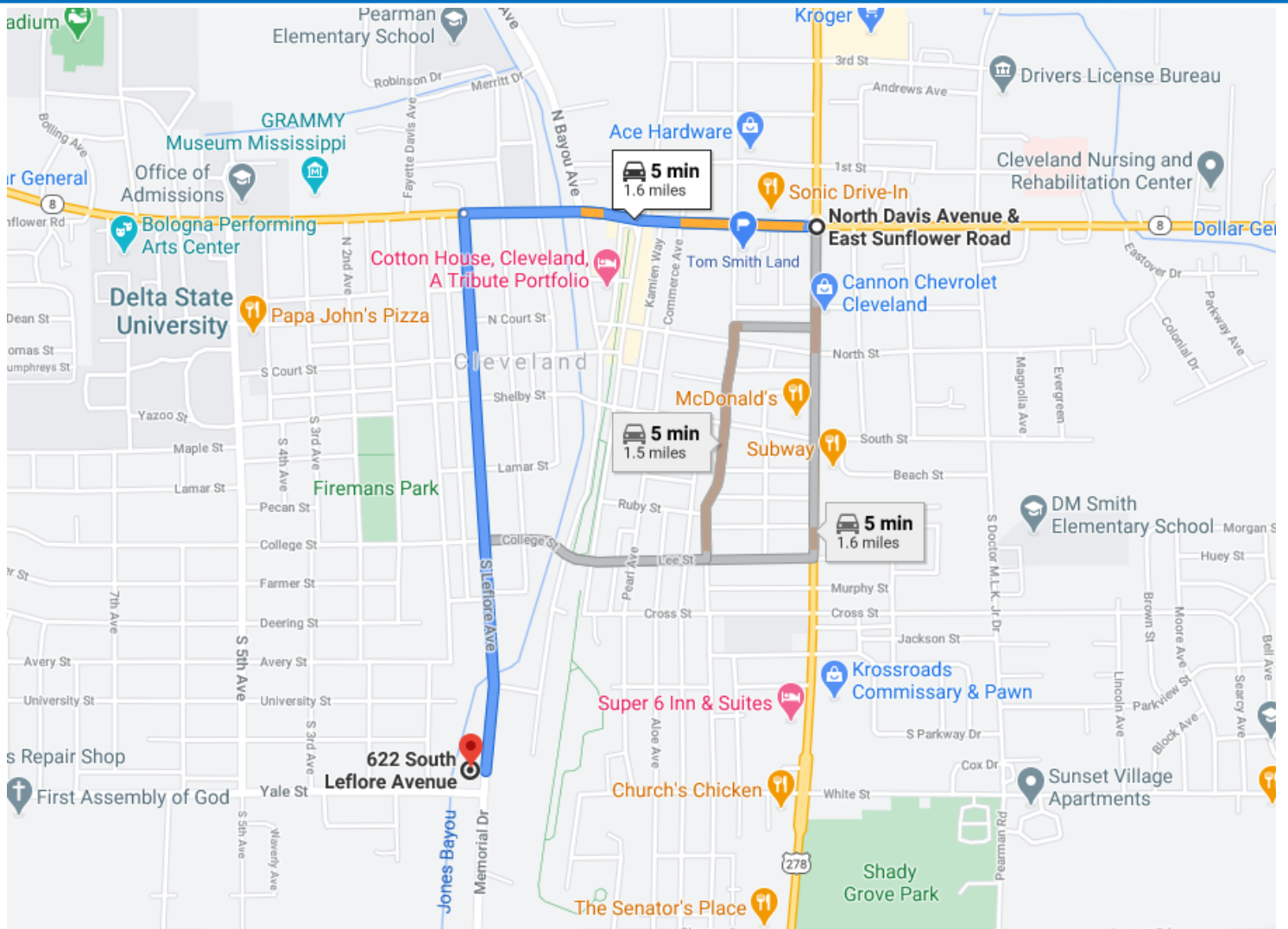
TRACEY BELL, MANAGING BROKER
Tracey@TomSmithLand.com
662.441.2500 office | 662.719.4720 cell



TomSmithLandandHomes.com

Information is believed to be accurate but not guaranteed.

Directional Map



Directions: From the intersection of Hwy 8 and Hwy 61 in Cleveland, MS travel west on Hwy 8 for approximately 0.6 miles, turn left onto N. Leflore Ave. and the destination will be on the right. [Click for Directions.](#)



Call me today!

TRACEY BELL, MANAGING BROKER

Tracey@TomSmithLand.com

662.441.2500 office | 662.719.4720 cell



Expect More. Get More.

TomSmithLandandHomes.com

Information is believed to be accurate but not guaranteed.