



**8+/- Acre Homesite
Pike County, MS**



8+/- Acres in Pike County!! This small acreage tract would make a perfect home site!! Minutes from the city of McComb, which makes grocery shopping and restaurants very convenient!! With frontage Magnolia Pisgah Rd. and utilities available, there is opportunity for multiple home sites or splitting and selling smaller lots! Call Konner Burke today to take a look at this place!!

Directions from McComb, MS: Travel west on Hwy 570 for 1.5 miles. Turn left onto Enterprise Rd. and in 1.3 miles the property will be on your left at the corner of Enterprise Rd. and Magnolia Pisgah Rd.

\$40,000



Call me today!

KONNER BURKE, REALTOR®
Konner@TomSmithLand.com

601.990.5070 office | 601.757.4447 cell



Expect More. Get More.

TomSmithLandandHomes.com

Information is believed to be accurate but not guaranteed.



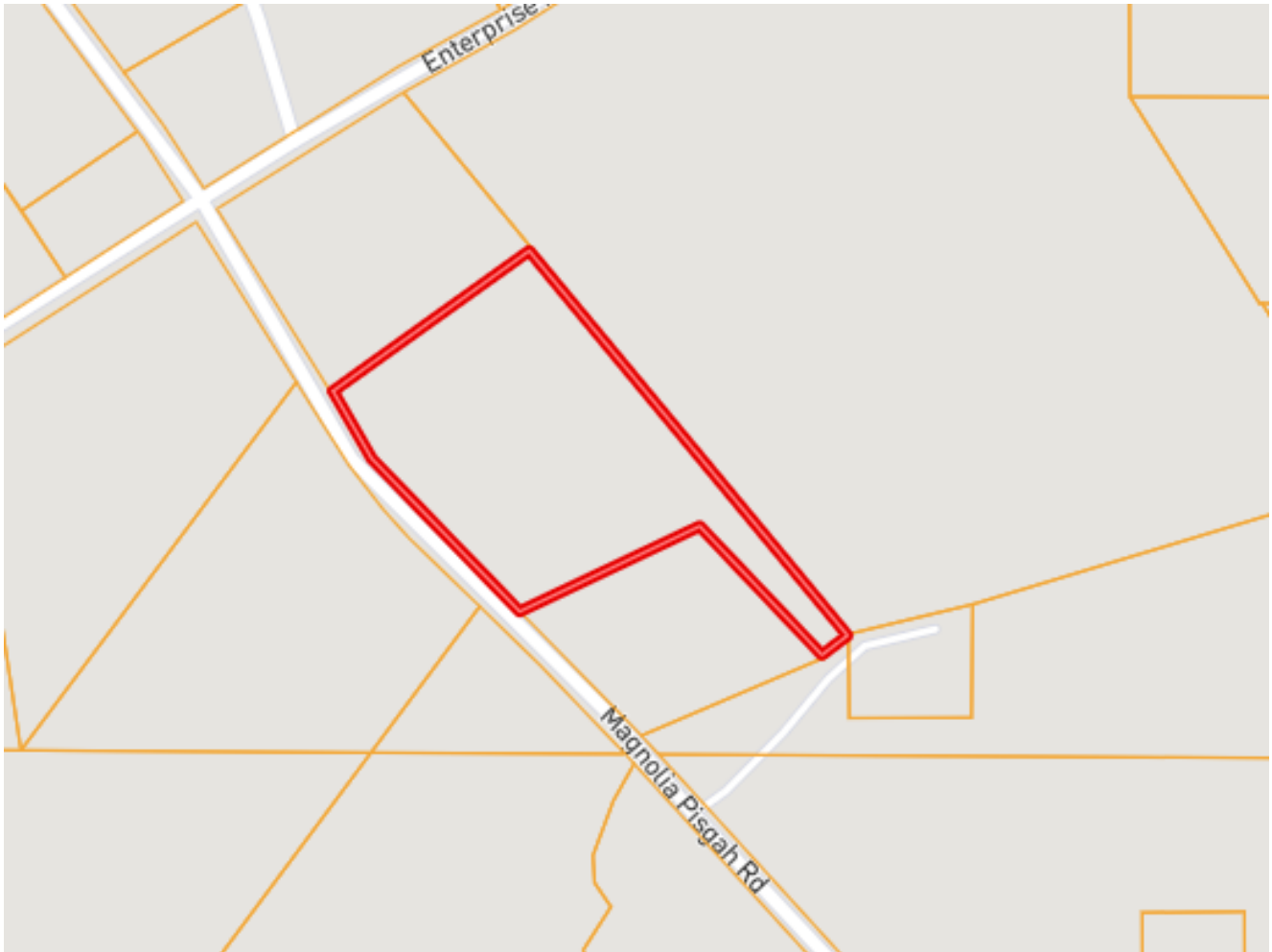
KONNER BURKE, REALTOR®
Konner@TomSmithLand.com
601.990.5070 office | 601.757.4447 cell



TomSmithLandandHomes.com

Information is believed to be accurate but not guaranteed.

Ownership Map



KONNER BURKE, REALTOR®
Konner@TomSmithLand.com
601.990.5070 office | 601.757.4447 cell



TomSmithLandandHomes.com

Information is believed to be accurate but not guaranteed.

Aerial Map



KONNER BURKE, REALTOR®
Konner@TomSmithLand.com
601.990.5070 office | 601.757.4447 cell



TomSmithLandandHomes.com

Information is believed to be accurate but not guaranteed.

Topo Map



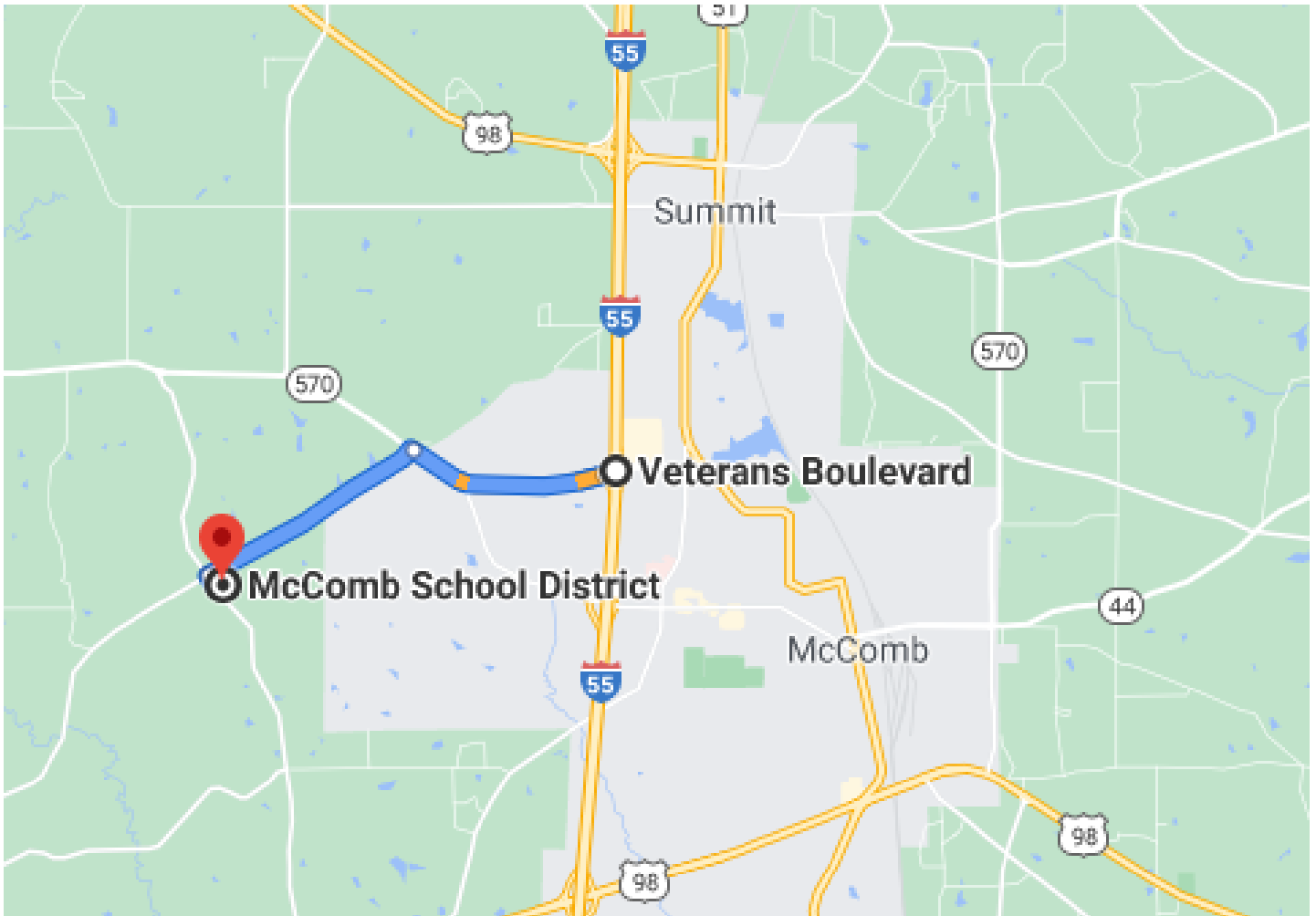
KONNER BURKE, REALTOR®
Konner@TomSmithLand.com
601.990.5070 office | 601.757.4447 cell



TomSmithLandandHomes.com

Information is believed to be accurate but not guaranteed.

Directional Map



Directions from McComb, MS: Travel west on Hwy 570 for 1.5 miles. Turn left onto Enterprise Rd. and in 1.3 miles the property will be on your left at the corner of Enterprise Rd. and Magnolia Pisgah Rd.



KONNER BURKE, REALTOR®
Konner@TomSmithLand.com
601.990.5070 office | 601.757.4447 cell



TomSmithLandandHomes.com

Information is believed to be accurate but not guaranteed.