



# 288+/- Acre Recreational Property Jackson County, MS



**\$795,000**

Looking for a great recreational property? This 288+/- acres in Jackson County, MS is it! This property features a 50x50 metal shop with roll doors and an office, and a 5+/-year old stand of Pine Timber. There are lots of deer sign, a creek and a pond providing recreation and a water source for wildlife. The internal road system in place would be perfect for riding ATV's or horses. Utilities are available. The possibilities are endless here, from that get away hunting camp to building that dream home or developing that business. The topography allows for multiple ideal home/camp sites. Located in Vancleave, with road frontage on Hedgecoth Road. Conveniently located approximately 20 minutes from the Gulf Coast and 1.5 hours from New Orleans. Call Preston to schedule a viewing!

Directions from MS-57 S in Vancleave, MS: Travel toward Ratliff Lane for 0.9 miles. Turn right onto Jim Ramsay Road. Travel 7.8 miles and turn left to stay on Jim Ramsay Road. Travel 2.4 miles and turn right onto Hedgecoth Lane. Travel 0.1 miles and the property will be on the left.



*Call me today!*

**PRESTON SMITH**, MANAGING BROKER  
Preston@TomSmithLand.com  
601.990.5070 office | 601.209.7150 cell



Expect More. Get More.

**TomSmithLandandHomes.com**

Information is believed to be accurate but not guaranteed.



*Call me today!*

**PRESTON SMITH**, MANAGING BROKER  
Preston@TomSmithLand.com  
601.990.5070 office | 601.209.7150 cell



Expect More. Get More.

**TomSmithLandandHomes.com**

Information is believed to be accurate but not guaranteed.



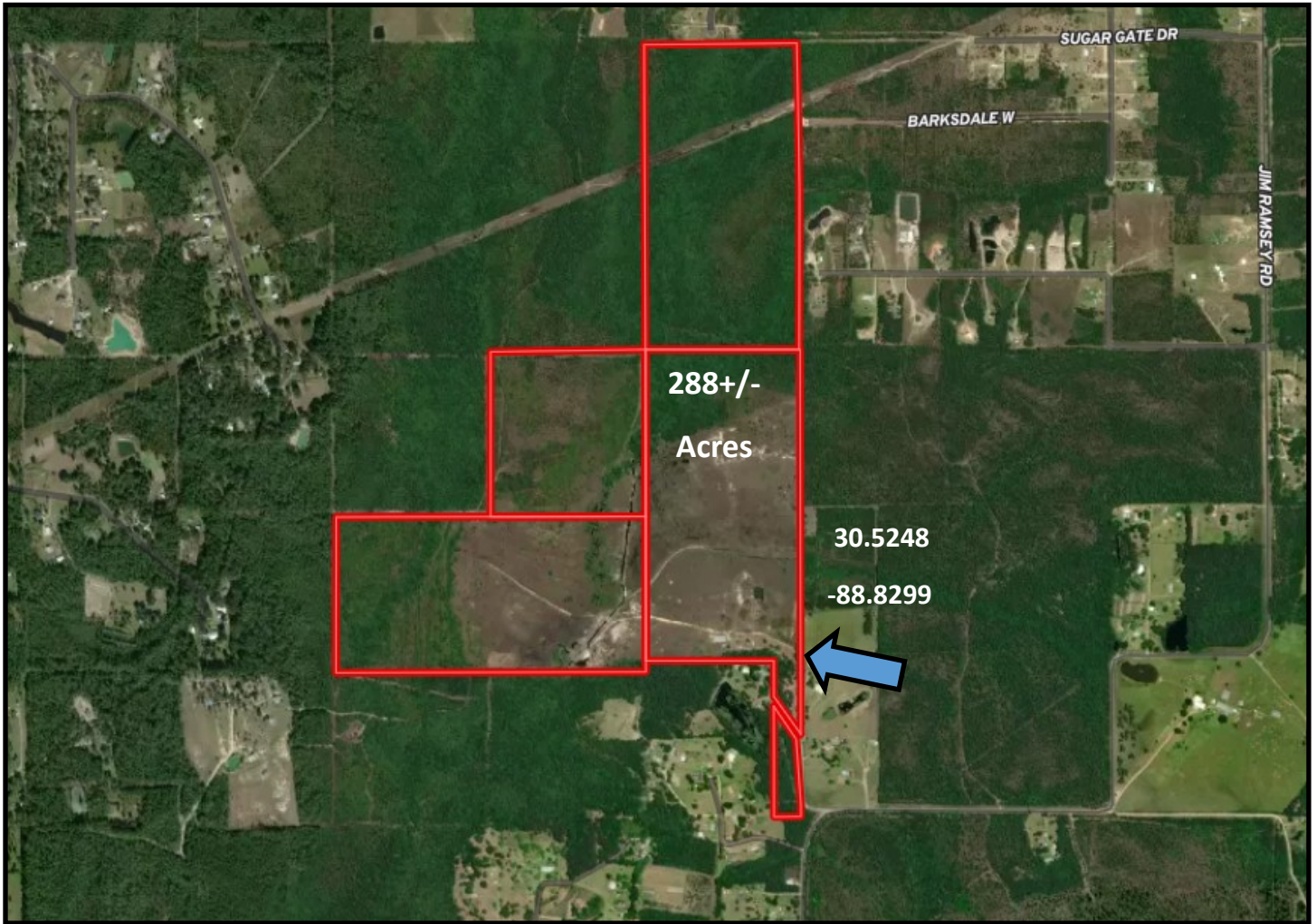
*Call me today!*

**PRESTON SMITH**, MANAGING BROKER  
Preston@TomSmithLand.com  
601.990.5070 office | 601.209.7150 cell



**TomSmithLandandHomes.com**

Information is believed to be accurate but not guaranteed.



Aerial Map



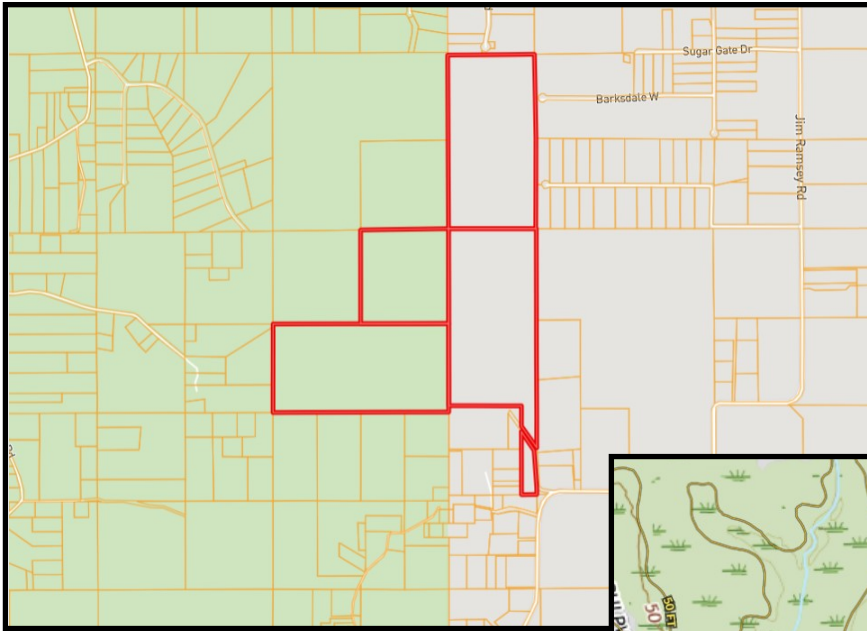
*call me today!*

**PRESTON SMITH**, MANAGING BROKER  
 Preston@TomSmithLand.com  
 601.990.5070 office | 601.209.7150 cell



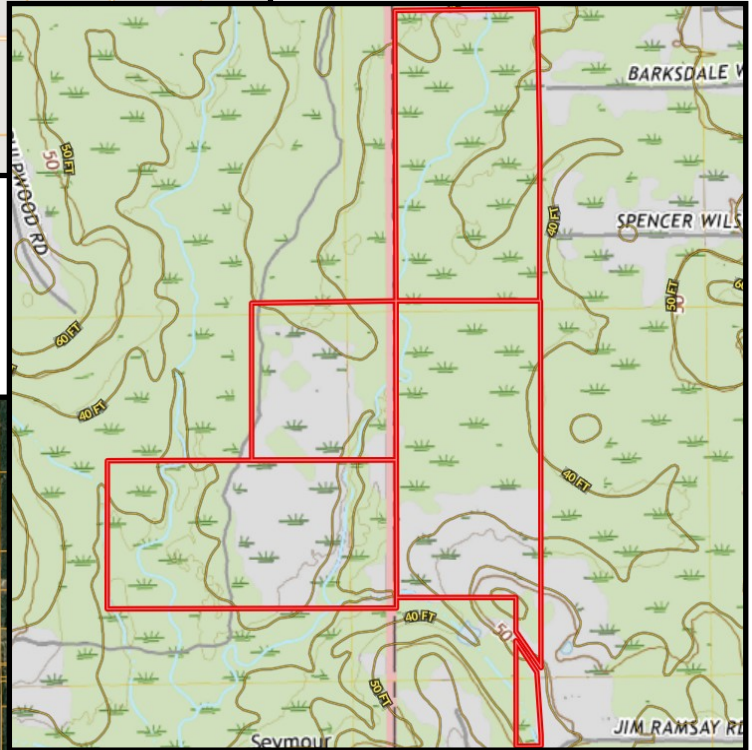
**TomSmithLandandHomes.com**

Information is believed to be accurate but not guaranteed.

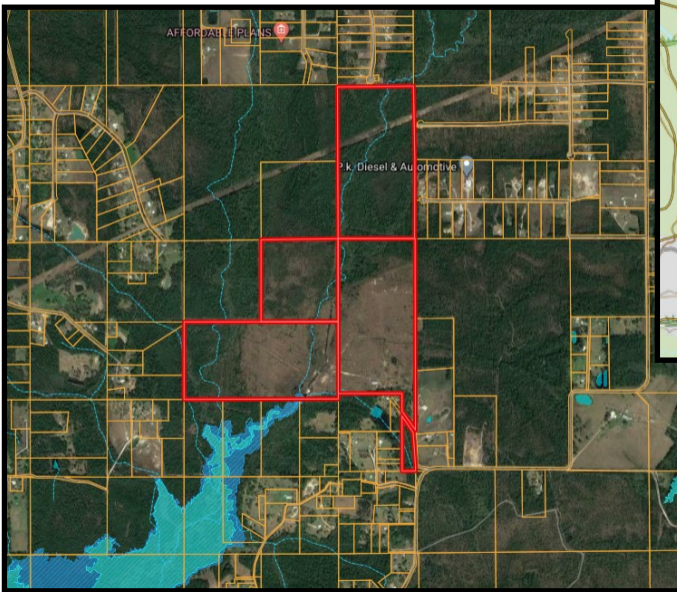


Ownership Map

Topography Map



Flood Map



*call me today!*



**PRESTON SMITH**, MANAGING BROKER

Preston@TomSmithLand.com

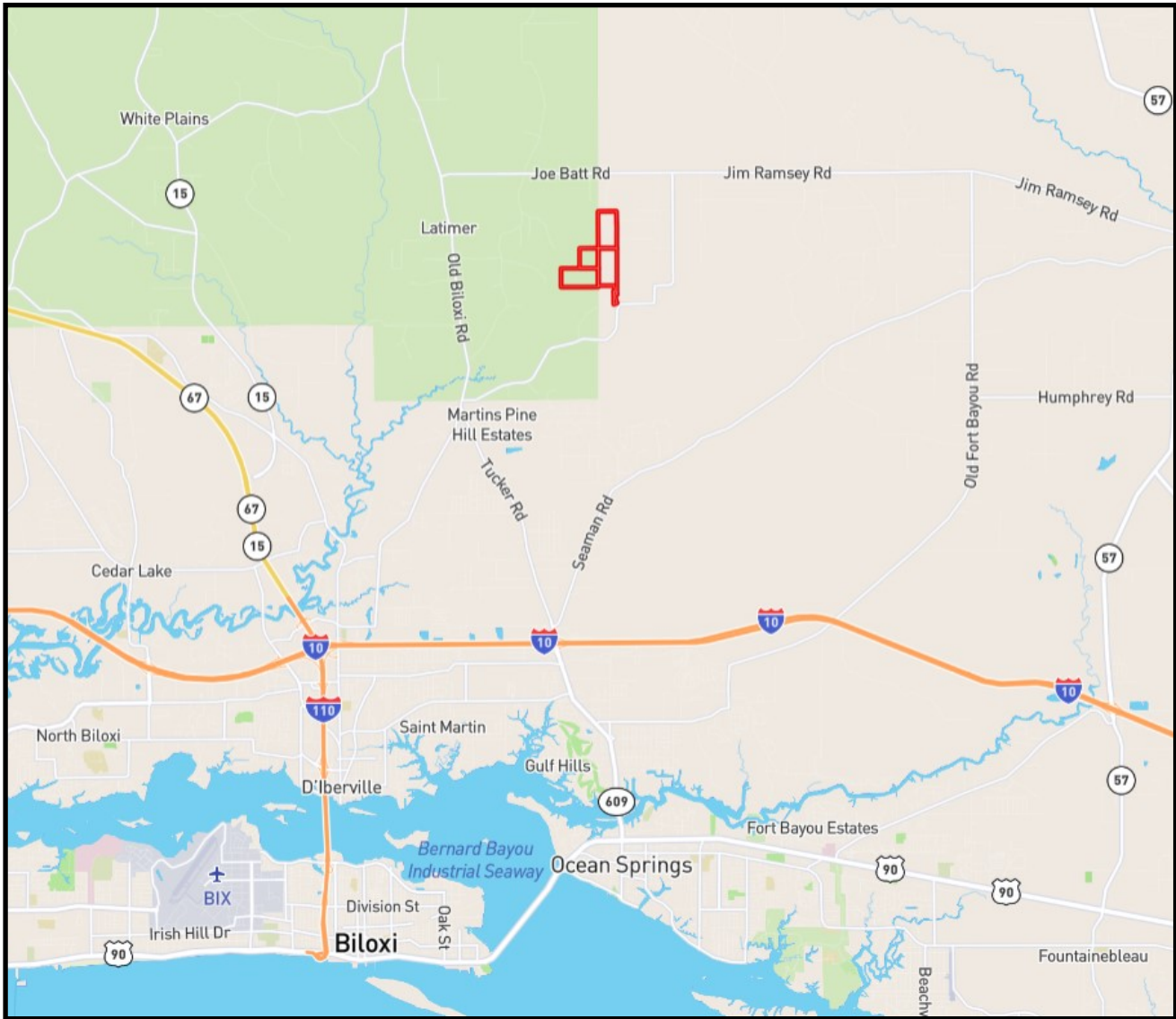
601.990.5070 office | 601.209.7150 cell

Expect More. Get More.



**TomSmithLandandHomes.com**

Information is believed to be accurate but not guaranteed.



## Directional Map

Directions from MS-57 S in Vanleave, MS: Travel toward Ratliff Lane for 0.9 miles. Turn right onto Jim Ramsay Road. Travel 7.8 miles and turn left to stay on Jim Ramsay Road. Travel 2.4 miles and turn right onto Hedgecoth Lane. Travel 0.1 miles and the property will be on the left.



*call me today!*



**PRESTON SMITH**, MANAGING BROKER

Preston@TomSmithLand.com

601.990.5070 office | 601.209.7150 cell

Expect More. Get More.



**TomSmithLandandHomes.com**

Information is believed to be accurate but not guaranteed.