

91+/- Acres of Pastureland in Oktibbeha County, MS



\$409,500

Looking for that hard to find pasture tract? Look no further than this 91+/- acre property in Oktibbeha County, MS. Much of the pasture is fenced with cross fencing in some areas to make it ideal for holding and rotating livestock. The northeast portion of the property would be ideal for a homesite. Some other features include a small pond, recently constructed pole barn, tack room, and extensive frontage on Sanders Road. This property is located just twelve miles west of all Starkville has to offer. Utilities are located on Sanders Road. For more information, or to schedule a private showing, call Harper Day today!

Directions from Hwy 25 South in Starkville: Travel south on MS-25 for 7.4 miles. Turn right onto Ennis Road and travel 2.5 miles. Turn left onto Pellum Road and travel 0.5 miles. Turn right onto Sanders Road, travel 0.2 miles and the property will be on your left. [INTERACTIVE MAP HERE](#)



call me today!

HARPER DAY, REALTOR®
Harper@TomSmithLand.com
662.268.6333 office | 662.694.9751 cell



TomSmithLandandHomes.com

Information is believed to be accurate but not guaranteed.



2011-2020
AMERICA'S
BEST
BROKERAGES

Call me today!

HARPER DAY, REALTOR®
Harper@TomSmithLand.com
662.268.6333 office | 662.694.9751 cell



TomSmithLandandHomes.com

Information is believed to be accurate but not guaranteed.

Aerial Map



Call me today!

2011-2020
AMERICAN
BEST
BROKERAGES

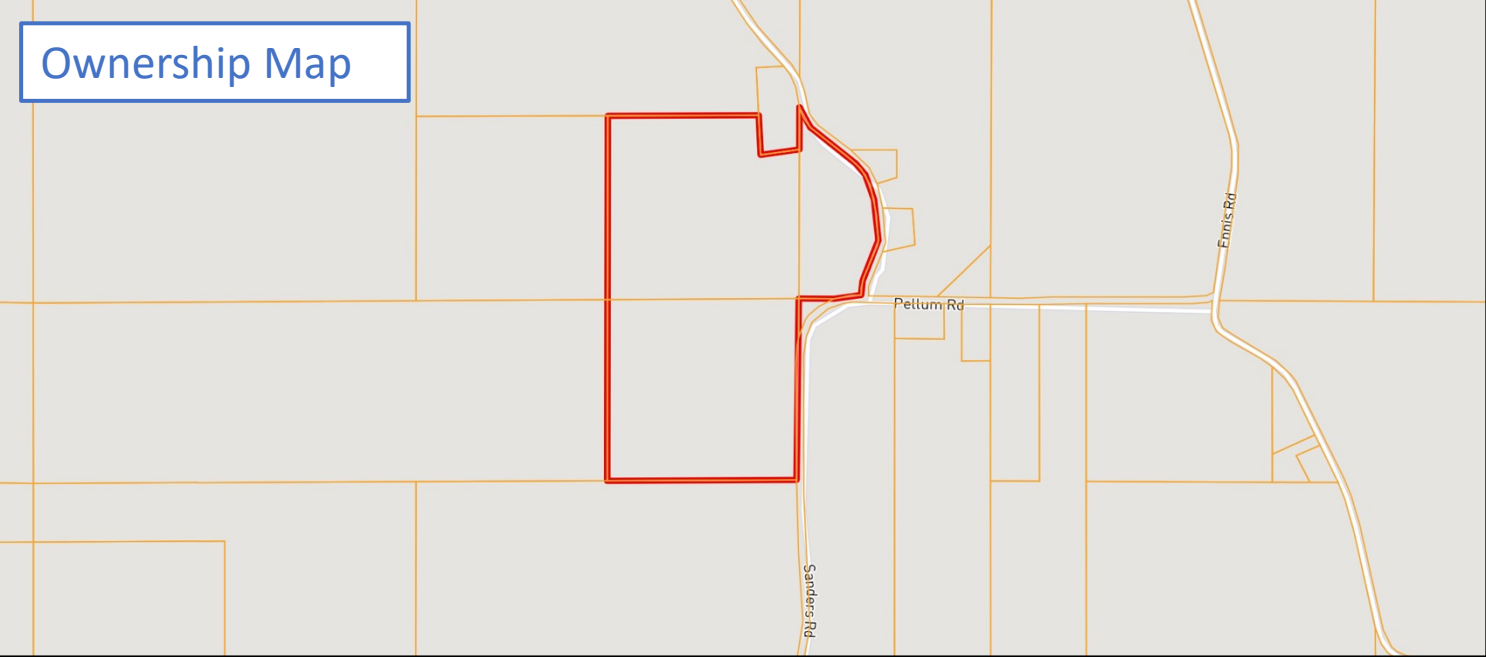
HARPER DAY, REALTOR®
Harper@TomSmithLand.com
662.268.6333 office | 662.694.9751 cell



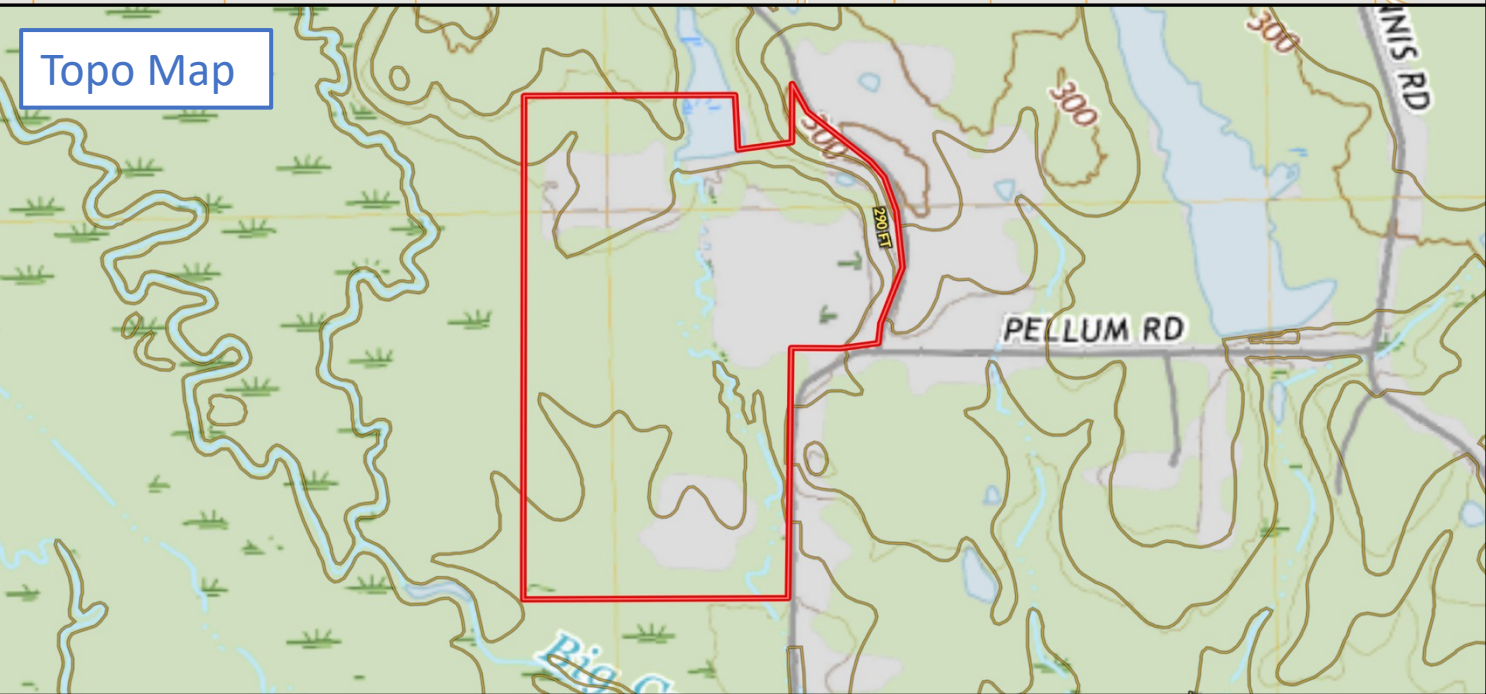
TomSmithLandandHomes.com

Information is believed to be accurate but not guaranteed.

Ownership Map



Topo Map



call me today!

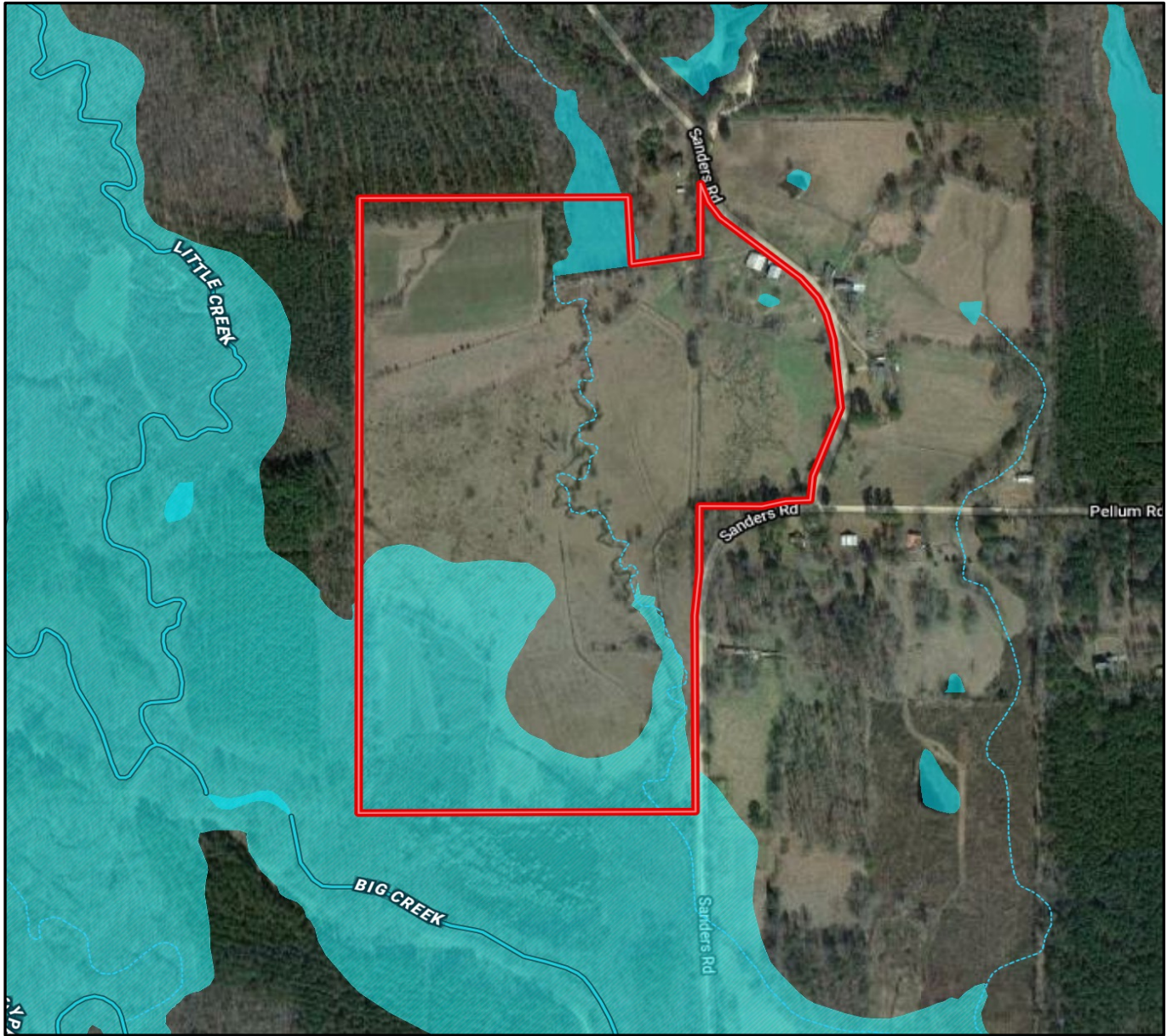
HARPER DAY, REALTOR®
Harper@TomSmithLand.com
662.268.6333 office | 662.694.9751 cell



TomSmithLandandHomes.com

Information is believed to be accurate but not guaranteed.

FEMA Flood and Water Feature Map



Call me today!

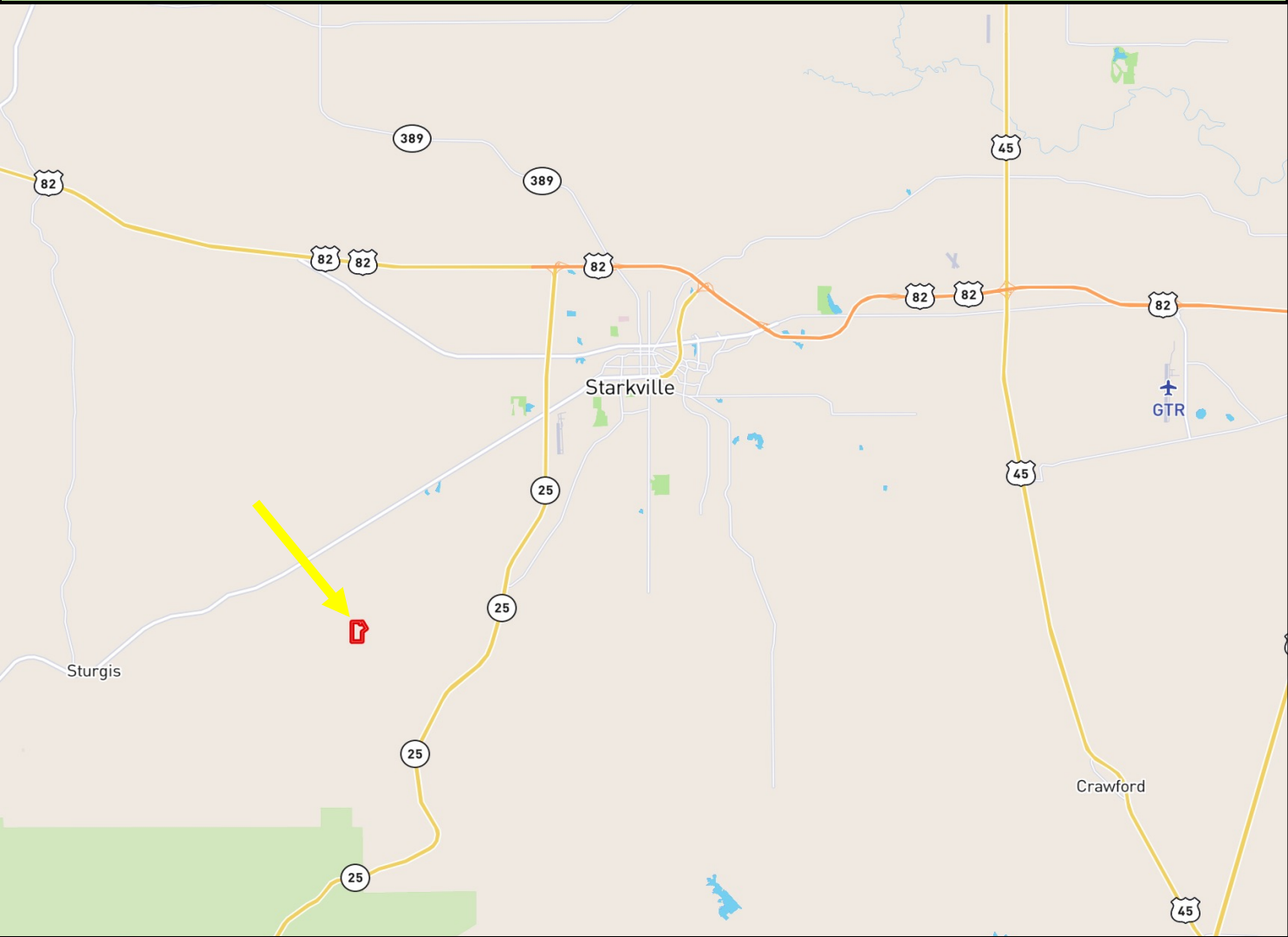
HARPER DAY, REALTOR®
Harper@TomSmithLand.com
662.268.6333 office | 662.694.9751 cell



TomSmithLandandHomes.com

Information is believed to be accurate but not guaranteed.

Directional Map



Directions from Hwy 25 South in Starkville: Travel south on MS-25 for 7.4 miles. Turn right onto Ennis Road and travel 2.5 miles. Turn left onto Pellum Road and travel 0.5 miles. Turn right onto Sanders Road, travel 0.2 miles and the property will be on your left. [INTERACTIVE MAP HERE](#)



Call me today!

HARPER DAY, REALTOR®
Harper@TomSmithLand.com
662.268.6333 office | 662.694.9751 cell



TomSmithLandandHomes.com

Information is believed to be accurate but not guaranteed.