

Classic Mississippi Delta Home Sunflower County, MS



**407 East Percy Street
Indianola, MS 38751**

Directions from the Intersection of Hwy 49 and Hwy 82 in Indianola, MS: Travel west on Hwy 82 towards Martin Luther King Drive. Pass the McDonald's on your right and turn left onto N. Sunflower Ave. Travel 0.3 miles and turn left onto E. Percy Street and the destination will be on the left.



call me today!

EMERSON LOVELACE, REALTOR®
Emerson@TomSmithLand.com
662.441.2500 **office** | 601.715.3302 **cell**



TomSmithLandandHomes.com

Information is believed to be accurate but not guaranteed.



This classic home is situated on a .44+/- acre corner lot in the historical district of Indianola in the heart of the Mississippi Delta. Beautifully maintained and updated with the latest kitchen and bathroom amenities, this 4,398+/- square foot, Sunflower County home offers six bedrooms, four baths and ensures plenty of space for the entire family. A nicely covered front porch allows for time to enjoy the mild Delta climate. Large rooms, vaulted ceilings, timeless woodwork and original flooring have all been well maintained. Perfect for entertaining guests is a split-level living room just off the kitchen area. Two functioning gas fireplaces are available to be converted back to original wood burning, if preferred. A guest home sits a few feet from the main house connected by a sunroom, perfect for your morning coffee or favorite read. The guest house features two bedrooms, one bath, a large open space and kitchenette allowing total privacy for your company. A beautiful 600+/- square foot swimming pool sits just outside the back door of the main house. This truly is Mississippi Delta living at its finest, within the city limits and close to any and everything. Call us today to experience this classic space!

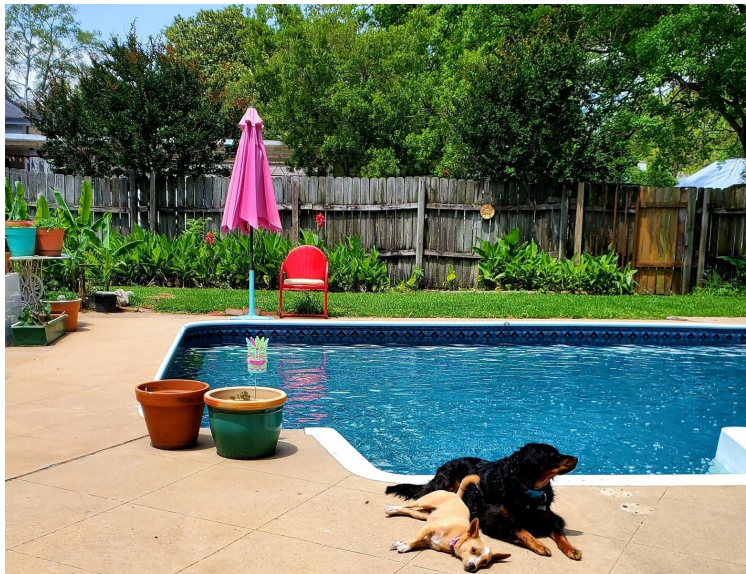


EMERSON LOVELACE, REALTOR®
Emerson@TomSmithLand.com
662.441.2500 office | 601.715.3302 cell



TomSmithLandandHomes.com

Information is believed to be accurate but not guaranteed.



EMERSON LOVELACE, REALTOR®
 Emerson@TomSmithLand.com
 662.441.2500 office | 601.715.3302 cell

**Tom
 Smith
 LAND AND
 HOMES**
 Expect More. Get More.

TomSmithLandandHomes.com

Information is believed to be accurate but not guaranteed.



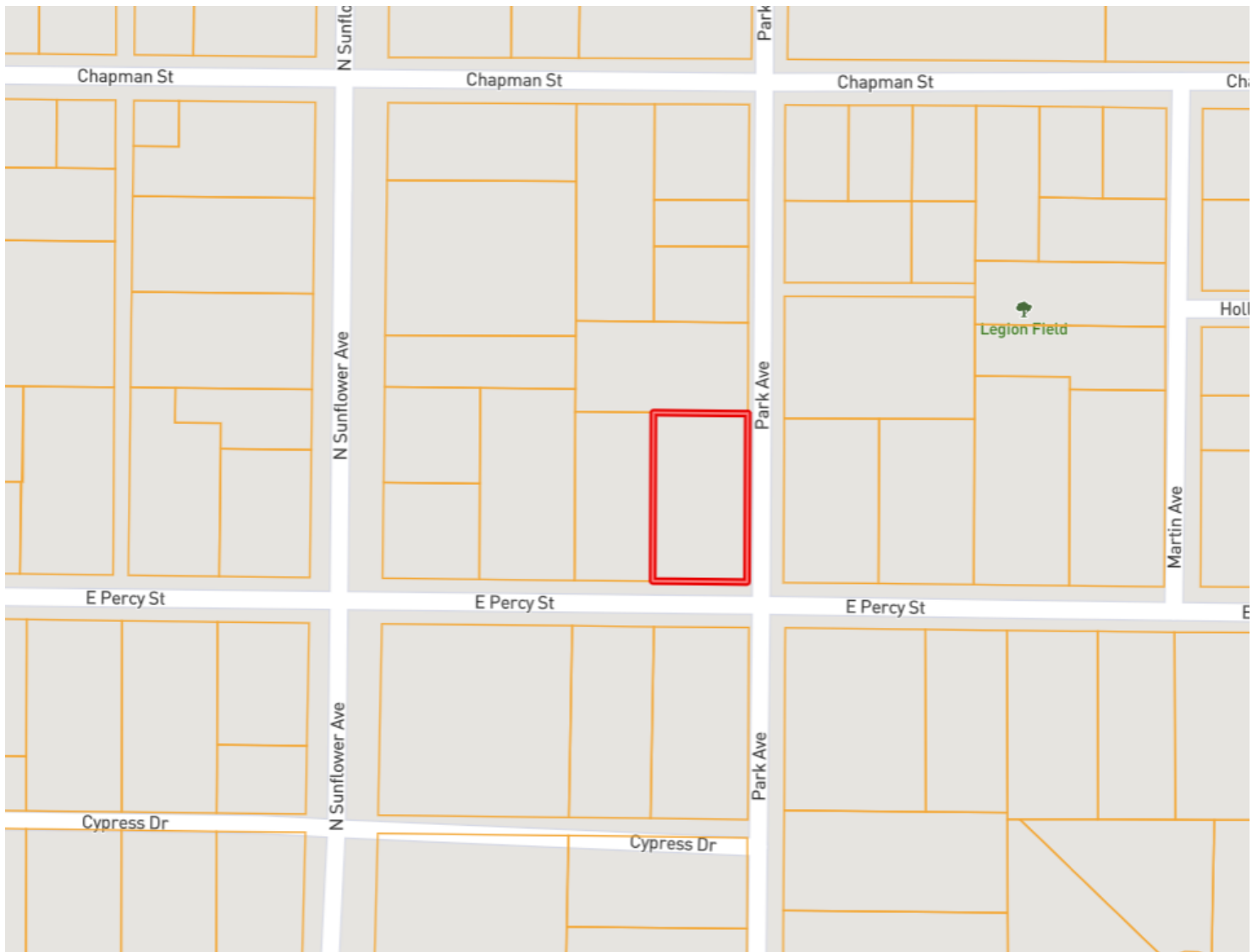
EMERSON LOVELACE, REALTOR®
 Emerson@TomSmithLand.com
 662.441.2500 office | 601.715.3302 cell

Tom Smith
LAND AND HOMES
 Expect More. Get More.

TomSmithLandandHomes.com

Information is believed to be accurate but not guaranteed.

OWNERSHIP MAP



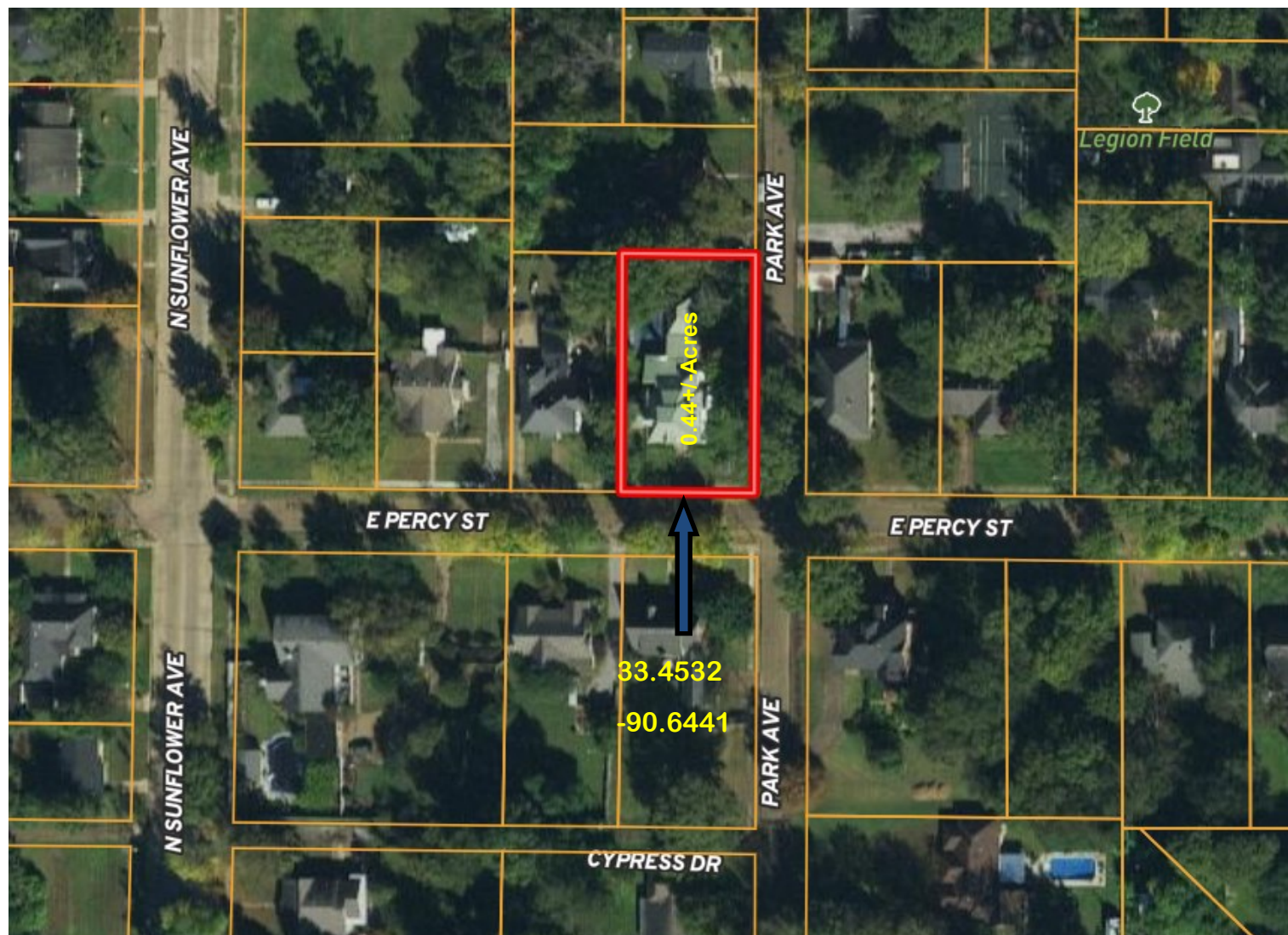
EMERSON LOVELACE, REALTOR®
Emerson@TomSmithLand.com
662.441.2500 office | 601.715.3302 cell



TomSmithLandandHomes.com

Information is believed to be accurate but not guaranteed.

AERIAL MAP



[Click for Interactive Map](#)



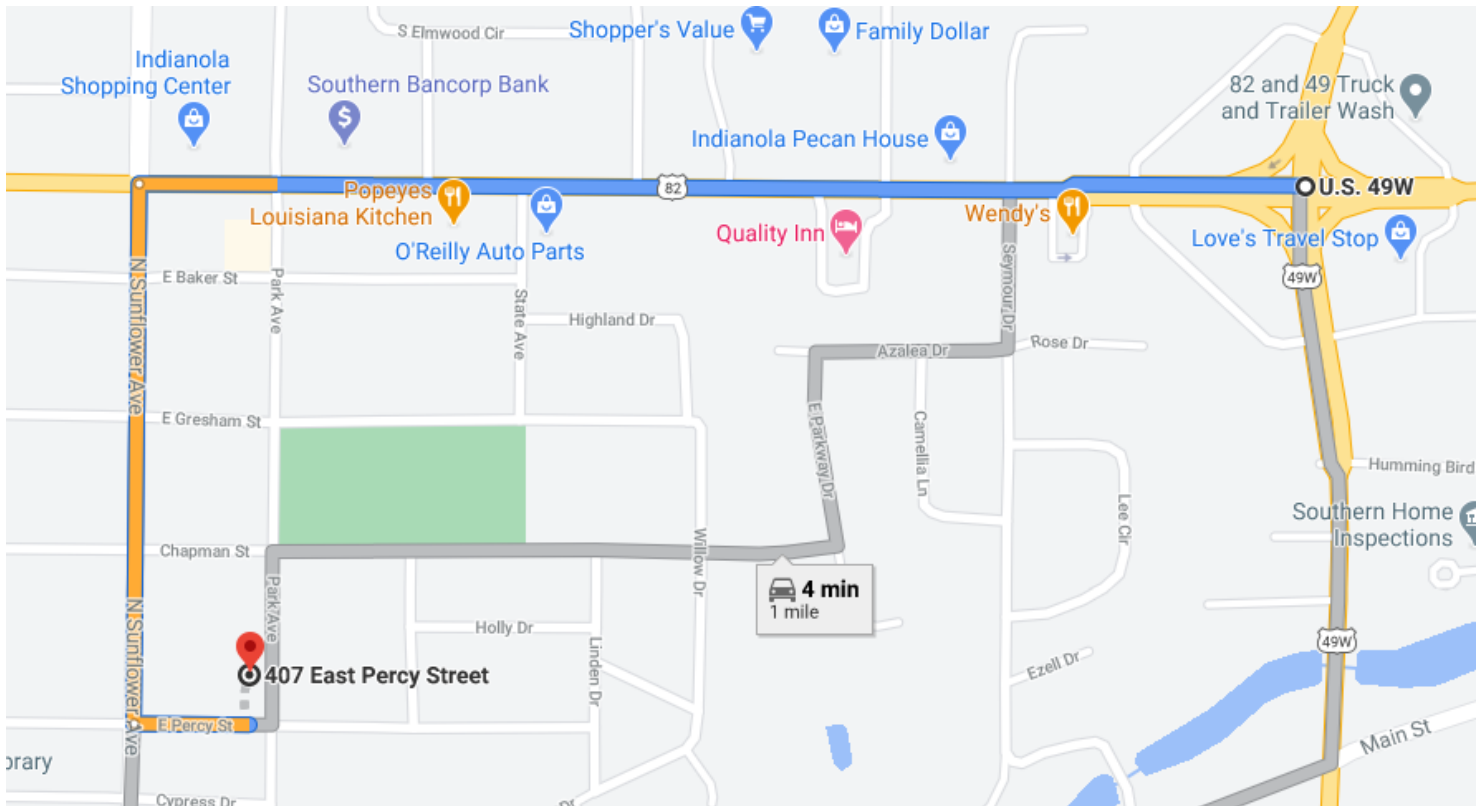
EMERSON LOVELACE, REALTOR®
Emerson@TomSmithLand.com
662.441.2500 office | 601.715.3302 cell



TomSmithLandandHomes.com

Information is believed to be accurate but not guaranteed.

DIRECTIONAL MAP



**Address: 407 East Percy Street
Indianola, MS 38751**

Directions from the Intersection of Hwy 49 and Hwy 82 in Indianola, MS: Travel west on Hwy 82 towards Martin Luther King Drive. Pass the McDonald's on your right and turn left onto N. Sunflower Ave. Travel 0.3 miles and turn left onto E. Percy Street and the destination will be on the left. [Click for directions.](#)



EMERSON LOVELACE, REALTOR®
Emerson@TomSmithLand.com
662.441.2500 office | 601.715.3302 cell

TomSmithLandandHomes.com

Information is believed to be accurate but not guaranteed.