

12 +/- Acre Homesite Simpson County, MS



\$26,500

Looking for a place to build your dream home? Take a look at this 12+/- acre property located only a short drive from New Hebron in Simpson County, MS. This tract would make a great home site while also offering hunting opportunities. The property is heavily wooded with hilly topography. The property offers road frontage on Guy Sherman Road and power is available. Take advantage of this property, call Austin today.



Directions from New Hebron, MS: Travel North on HWY 42 for approximately 4 miles. Turn right onto Joe Buckley Rd. Travel approximately 1 mile and take a left on Guy Sherman Rd. Property is on the left.



call me today!

AUSTIN WILSON, REALTOR®

Austin@TomSmithLand.com

601.898.2772 **office** | 601.826.0816 **cell**



Expect More. Get More.

TomSmithLandandHomes.com

Information is believed to be accurate but not guaranteed.



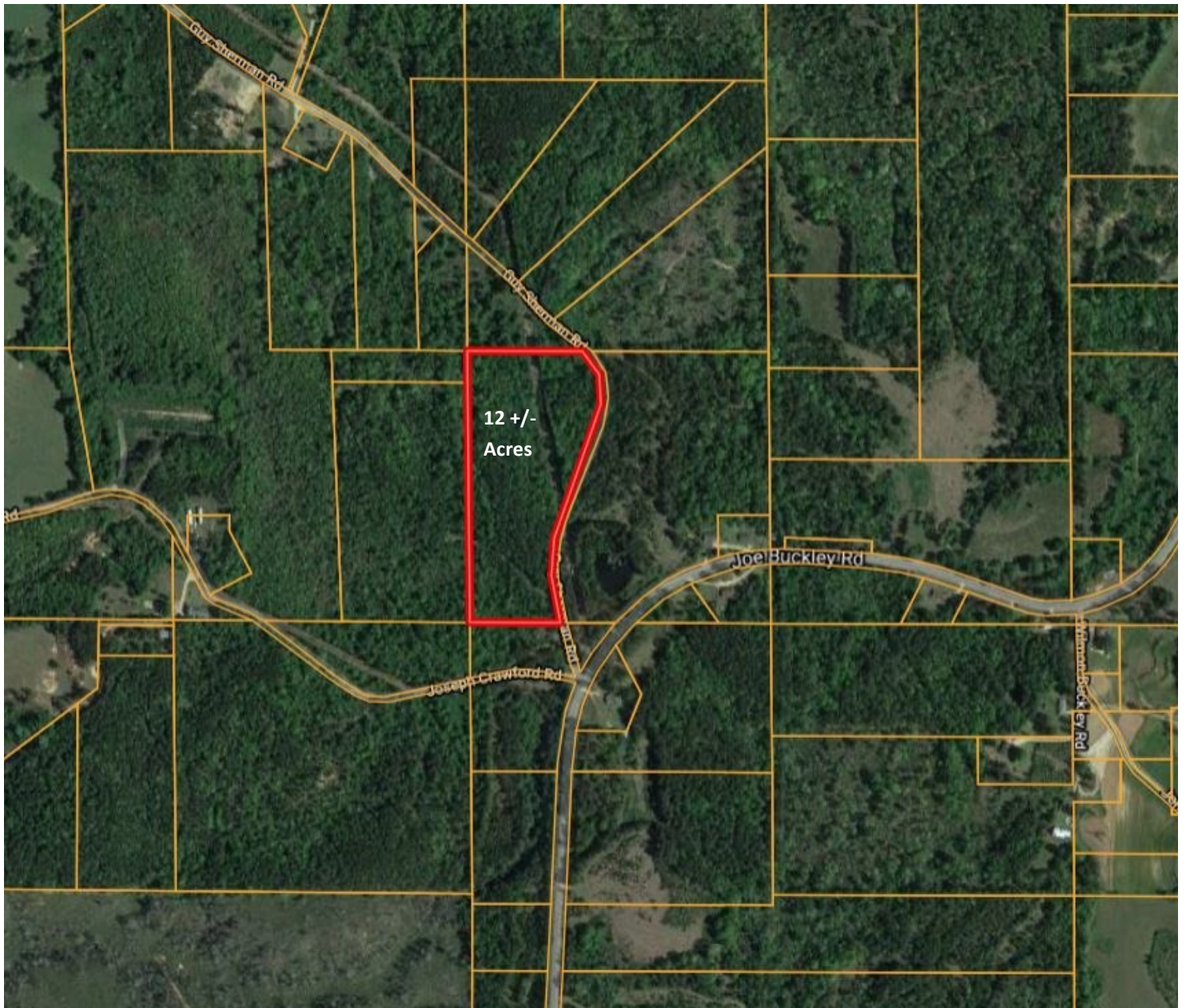
AUSTIN WILSON, REALTOR®
Austin@TomSmithLand.com
601.898.2772 **office** | 601.826.0816 **cell**



TomSmithLandandHomes.com

Information is believed to be accurate but not guaranteed.

PROPERTY MAP



AUSTIN WILSON, REALTOR®
Austin@TomSmithLand.com
601.898.2772 office | 601.826.0816 cell



TomSmithLandandHomes.com

Information is believed to be accurate but not guaranteed.

AERIAL MAP



AUSTIN WILSON, REALTOR®
Austin@TomSmithLand.com
601.898.2772 office | 601.826.0816 cell



TomSmithLandandHomes.com

Information is believed to be accurate but not guaranteed.

FLOOD MAP



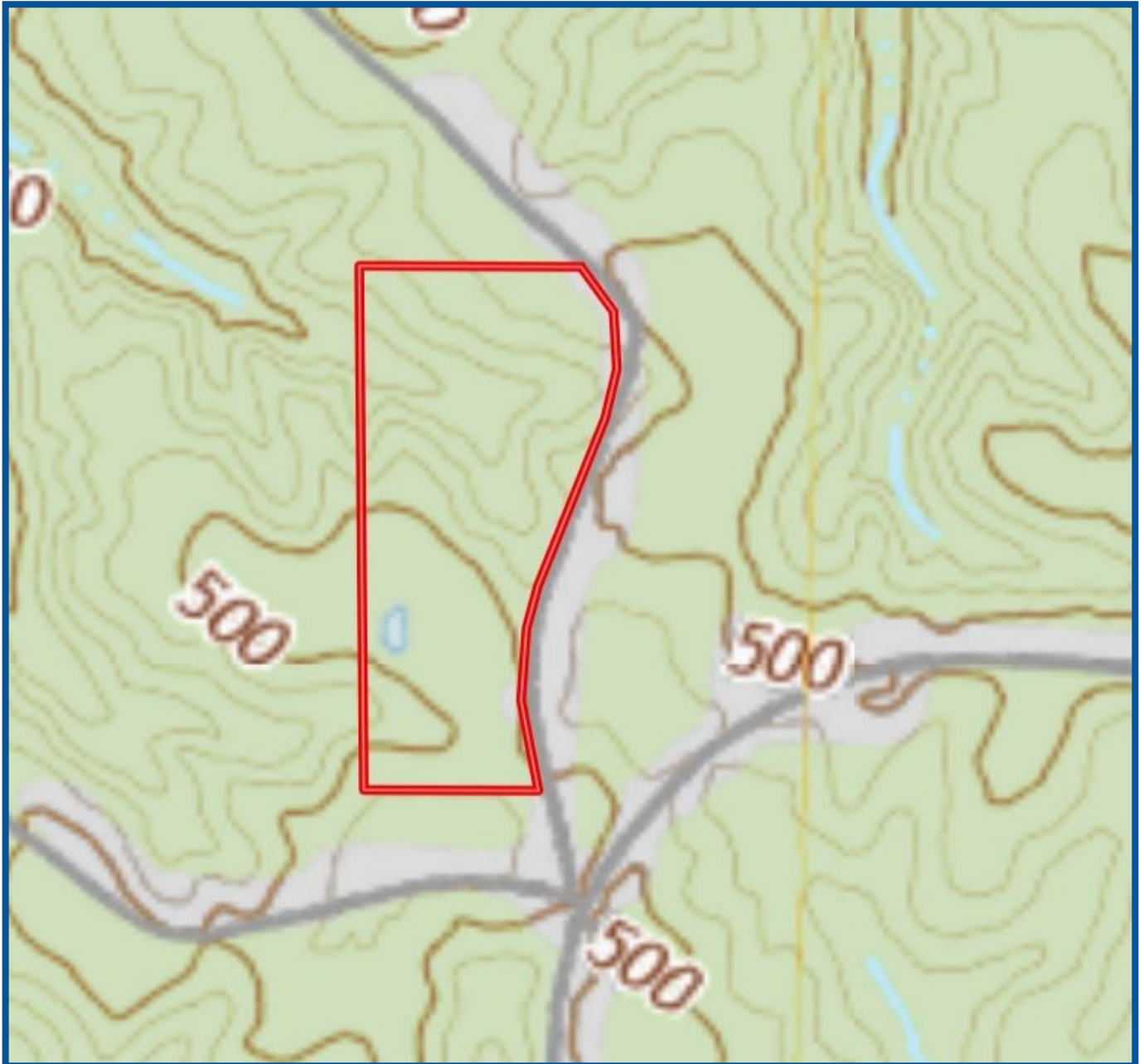
AUSTIN WILSON, REALTOR®
Austin@TomSmithLand.com
601.898.2772 office | 601.826.0816 cell



TomSmithLandandHomes.com

Information is believed to be accurate but not guaranteed.

TOPO MAP



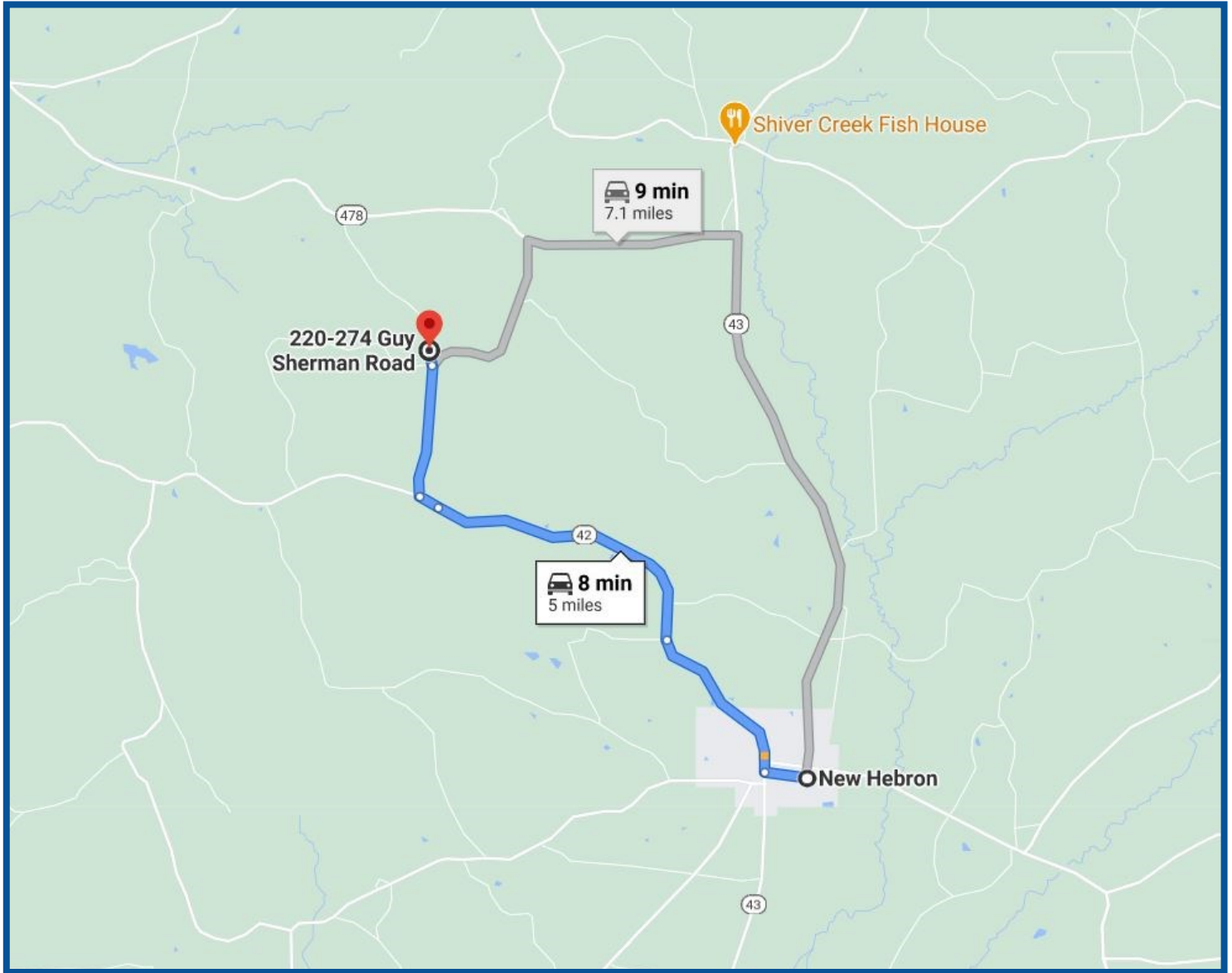
AUSTIN WILSON, REALTOR®
Austin@TomSmithLand.com
601.898.2772 office | 601.826.0816 cell



TomSmithLandandHomes.com

Information is believed to be accurate but not guaranteed.

DIRECTIONAL MAP



Directions from New Hebron, MS: Travel north on HWY 42 for approximately 4 miles and turn right on Joe Buckley Rd. Travel approximately 1 mile and turn left on Guy Sherman Rd. The property is on the left.

AUSTIN WILSON, REALTOR®
Austin@TomSmithLand.com
601.898.2772 office | 601.826.0816 cell



TomSmithLandandHomes.com

Information is believed to be accurate but not guaranteed.