

30+/- Acre Recreational Property Franklin County, MS



\$82,500

Check out this 30+/-acre recreational tract in Northeast Franklin County, MS just minutes from US-84. This heavily wooded, hill country tract is made up of 15+/- year old planted pine and is ready for its first thinning. Franklin County is known for excellent hunting opportunities and this place is no different. The property is situated on Lofton Road just minutes from Lake Okhissa and the Homochitto National Forest. Take advantage of this fantastic opportunity for investment, recreation, or a home site. Call Clif to schedule a showing of this property just a short piece from the Entergy substation in Lucien.

From the intersection of I-55 and Hwy-84 in Brookhaven, MS: Travel west on US-84 for 10.9 miles. Turn right onto Dummy Line Road and travel 150 feet Turn right onto Lofton Rd and travel for 1.4 miles. The property will be on the left.



call me today!

CLIF CANNON, REALTOR®
Clif@TomSmithLand.com
601.990.5070 office | 601.565.1070 cell



TomSmithLandandHomes.com

Information is believed to be accurate but not guaranteed.



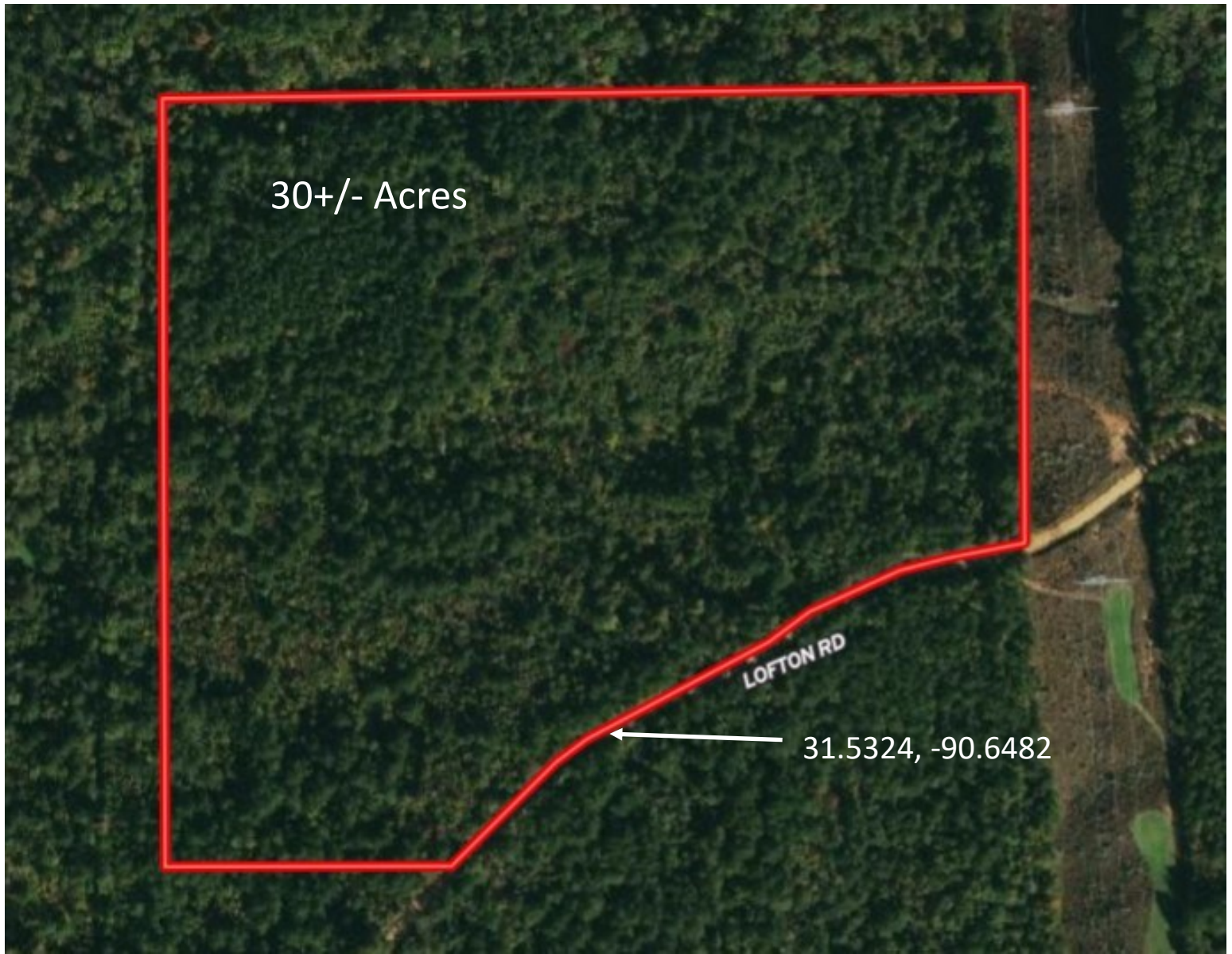
CLIF CANNON, REALTOR®
 Clif@TomSmithLand.com
 601.990.5070 office | 601.565.1070 cell



Expect More. Get More.

TomSmithLandandHomes.com

Information is believed to be accurate but not guaranteed.



Aerial Map



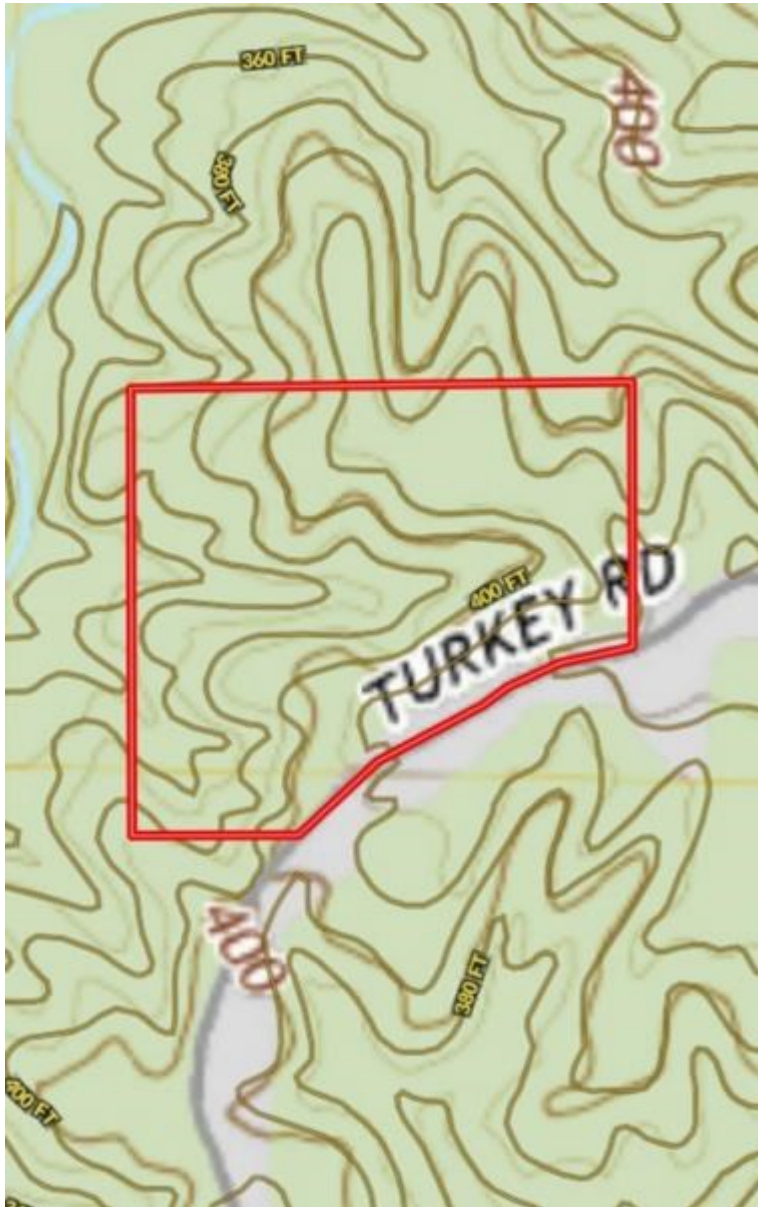
CLIF CANNON, REALTOR®
Clif@TomSmithLand.com
601.990.5070 office | 601.565.1070 cell



TomSmithLandandHomes.com

Information is believed to be accurate but not guaranteed.

Flood Map



Topographic Map



CLIF CANNON, REALTOR®
Clif@TomSmithLand.com
601.990.5070 office | 601.565.1070 cell



TomSmithLandandHomes.com

Information is believed to be accurate but not guaranteed.

Directional Map

From the intersection of I-55 and Hwy-84 in Brookhaven, MS:
Travel west on US-84 for 10.9 miles. Turn right onto Dummy Line Road and travel 150 feet Turn right onto Lofton Rd and travel for 1.4 miles. The property will be on the left.



Ownership Map



CLIF CANNON, REALTOR®
Clif@TomSmithLand.com
601.990.5070 office | 601.565.1070 cell

TomSmithLandandHomes.com

Information is believed to be accurate but not guaranteed.