

1+/- Acre Commercial Property in Hinds County, MS



Lindbergh Drive Jackson, MS 39029

\$50,000

- ◆ Minutes off of I-220
- ◆ Large Asphalt Parking area
- ◆ Easy Access to I-20 and I-55
- ◆ Zoned Light Industrial and C-3
- ◆ Close to Residential and Commercial Sectors
- ◆ Just off W. Capital St. to the North

Invest in the future of Jackson, MS! Take advantage of this 1+/- acre commercial property just minutes from Hwy-220 in Hinds County. The property is situated on Lindbergh Road zoned light industrial and C3. A large asphalt parking area is on site. Contact Clif for more information about this great opportunity.

Directions from the Intersection of I-20 and I-220 in Jackson, MS: Travel north on I-220 for 3 miles. Take exit 2A. Turn right at the light onto Lindbergh Rd and travel for .4 miles. The property will be on the right.



call me today!

CLIF CANNON, REALTOR®
Clif@TomSmithLand.com
601.990.5070 office | 601.565.1070 cell



TomSmithLandandHomes.com

Information is believed to be accurate but not guaranteed.



Aerial Map



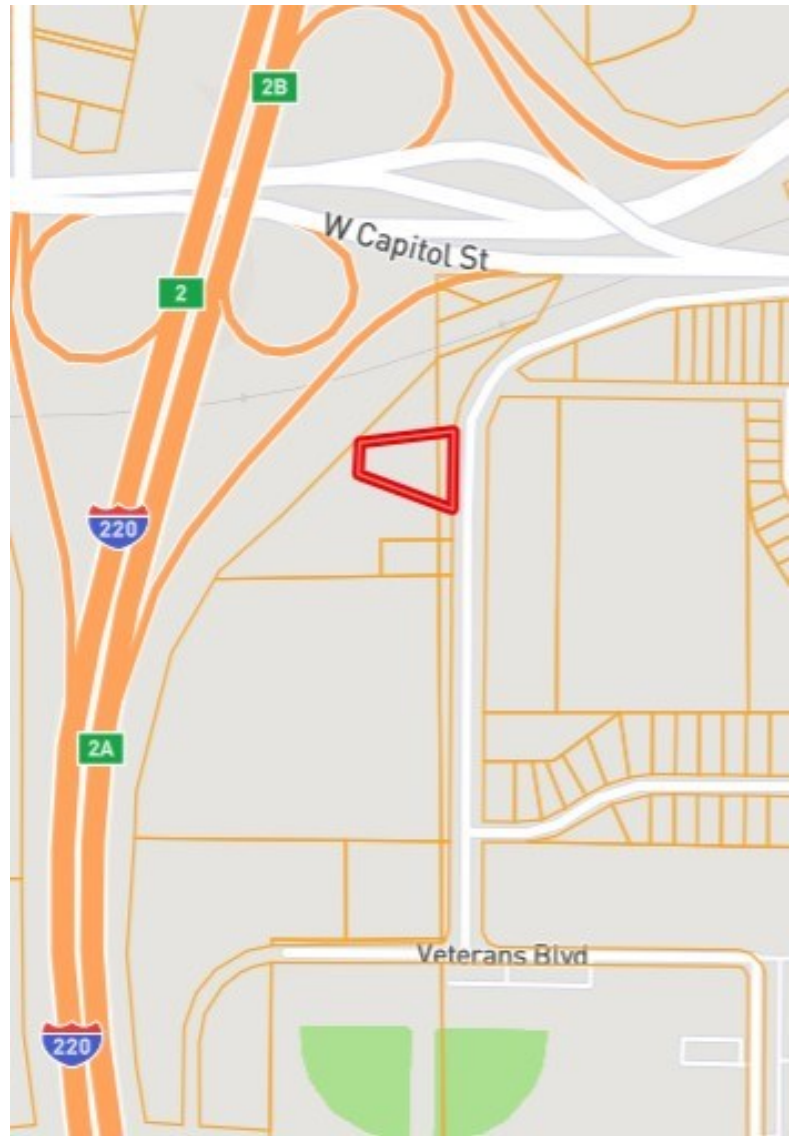
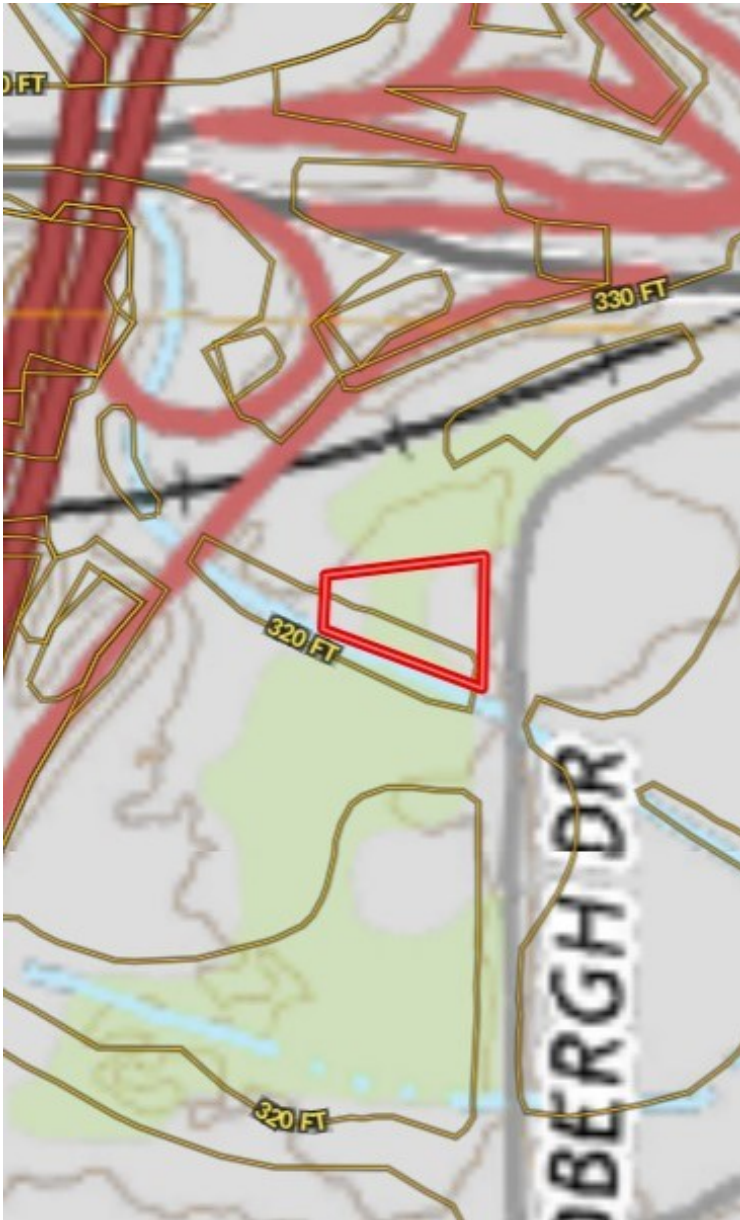
CLIF CANNON, REALTOR®
Clif@TomSmithLand.com
601.990.5070 office | 601.565.1070 cell



TomSmithLandandHomes.com

Information is believed to be accurate but not guaranteed.

Ownership Map



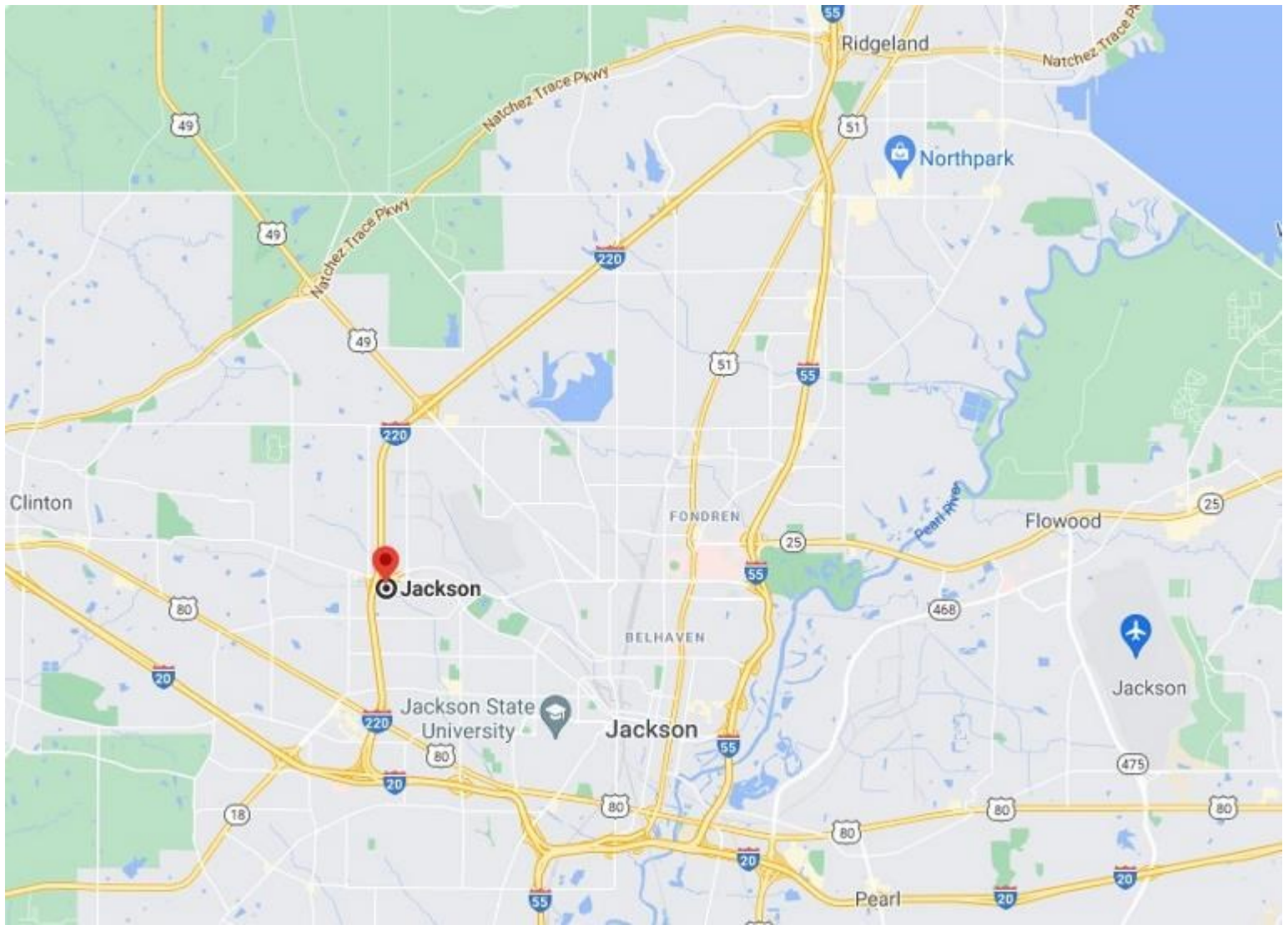
Topographic Map



CLIF CANNON, REALTOR®
Clif@TomSmithLand.com
601.990.5070 office | 601.565.1070 cell

TomSmithLandandHomes.com

Information is believed to be accurate but not guaranteed.



Directional Map

Directions from the intersection of I-20 and I-220 in Jackson, MS: Travel north on I-220 for 3 miles. Take exit 2A. Turn right at the light onto Lindbergh Rd and travel for .4 miles. The property will be on the right.



CLIF CANNON, REALTOR®
Clif@TomSmithLand.com
601.990.5070 office | 601.565.1070 cell



TomSmithLandandHomes.com

Information is believed to be accurate but not guaranteed.