



# 119 WOODMONT WAY

*a grand estate*



**1.66 ACRES ± MADISON COUNTY, MS**

INFORMATION IS BELIEVED TO BE CORRECT BUT NOT GUARANTEED



Come tour this private, 1.66 ± acre grand estate in Madison County, MS! This one-owner, 10,239± square foot, custom built luxury home is situated in the gated Bridgewater subdivision and offers five bedroom suites, six and a half bathrooms, quality craftsmanship, and breathtaking architectural details.

As you enter the arched, solid-mahogany doors, you are greeted with an elegant aesthetically pleasing foyer. An elaborate dining room is to the left and a fancy formal living room on the opposite side, each room features an ornate chandelier. Your eyes will be drawn to the beautiful architectural balance of arches, the tasteful colors, gleaming wood floors, and high ceilings with spectacular trim and molding.





a chef's  
dream  
kitchen

A culinary kitchen houses all the needs of a gourmet chef, including a six-burner Wolfe range, double ovens, a Sub Zero refrigerator, two dishwashers, an ice maker, a microwave, a warming drawer, and a large granite island. There are lots of cabinets to the ceiling and lots of spacious countertops to fulfill all your cooking needs. Next to the gourmet kitchen is a Butler's pantry with more counter space, a wine cooler, sink, additional oven, warming drawer, and glass display cabinets. Across from Butler's pantry is a huge walk-in pantry to store all your kitchen appliances and food. This truly is a chef's dream kitchen!

## LUXURY GOURMET KITCHEN

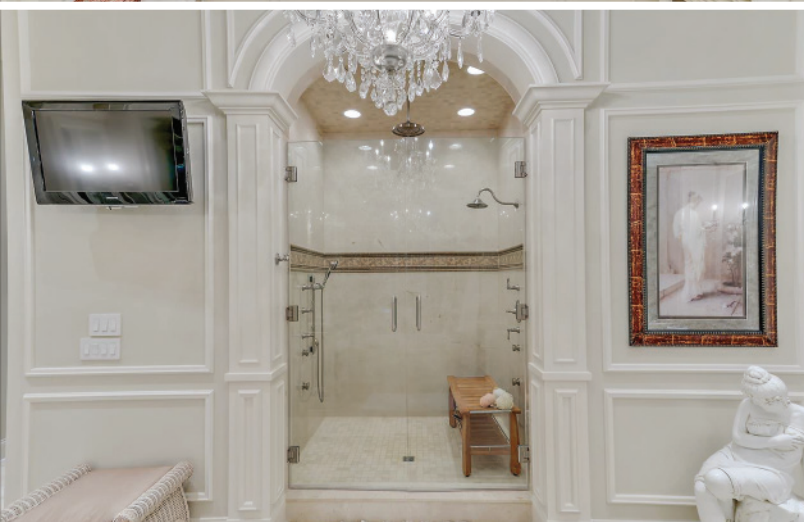




## MASTER SUITE

The spacious master suite takes up a whole wing of the house with its large safe room and separate, adjoining office. The custom bathroom looks like it belongs in the Ritz Carlton with the large glamorous crystal chandelier, his and hers vanities, a make-up counter, his and hers water closets, a large Jacuzzi tub, and a spa shower loaded with nozzles and sprays for complete relaxation. Your feet will never be cold on the heated, porcelain tile floors. The master closet is simply amazing- lots of space for all your hanging clothes, multiple storage areas, and a full laundry room with a sink!

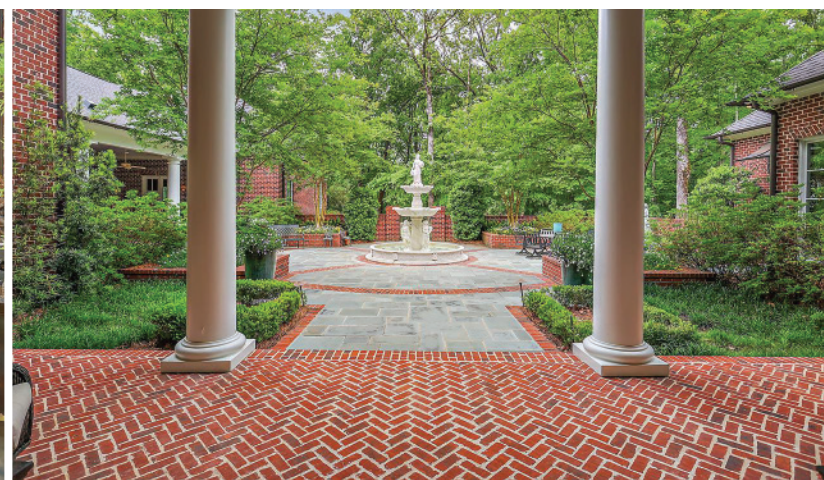
Three additional large bedrooms with private baths are perfectly placed downstairs and there is one bonus room upstairs. An exercise room offers a mirrored wall and a view of the backyard and fountain. Hardwood floors are throughout the main areas while carpet is in each closet and the bonus room upstairs.





## features SPOTLIGHT

- Grand estate on 1.66 Acres ±.
- 5 bedroom, 6.5 bath, 10,239 Sq. ft
- Gourmet kitchen with Butler's pantry
- Master suite with luxurious bathroom, large closet, separate laundry, & adjoined office
- Private baths for each bedroom
- Large exercise room with mirror wall
- Approx. 2100 Sq. ft banquet room with full kitchen, bathroom, pantry/storage, builtins & fireplace
- French doors & large windows for great natural light
- Quality craftsmanship & spectacular trim & molding
- Outdoor entertaining space with TV built in grill, sink, & bar for eating
- Private courtyard with marble fountain & back porches
- 3 car garage with ceiling to ceiling cabinets & extra storage room
- Tankless water heaters
- Generac Quiet Source Generator
- Huge Safe Room
- 2 Laundry Rooms, one in master closet
- Bridgewater subdivision features a clubhouse, tennis courts, & community pool.





asking  
**PRICE**

**\$2,499,000**



**ELLEN SMITH** ASSOCIATE BROKER, REALTOR  
TOM SMITH LAND AND HOMES  
112 VILLAGE BLVD  
MADISON, MS 39110  
601.898.2772 OFFICE  
601.954.9395 CELL

**CLICK HERE FOR A 3D TOUR:**  
<https://my.matterport.com/show/?m=DYBuFsg97CN&brand=0>



INFORMATION IS BELIEVED TO BE CORRECT BUT NOT GUARANTEED