

# Lots 20 & 21 Elm Lake Subdivision Lowndes County, MS



\$36,500 Per Lot

Have you been looking for the perfect location to build your dream home? This Lowndes County property consists of two lots that may be purchased separately or as one large lot on the south side of Elm Lake Golf course. Protective covenants allow for one single-family residence of not less than 2,000 sq. ft. The location is ideal, situated in a cul de sac off Bobby Jones Loop and just minutes to GTR Regional airport, downtown Columbus, MS, the Mississippi University for Women, and a short drive to Mississippi State University. If you're ready to start building your next dream home in a well-established neighborhood, give Doyes a call for your private showing today.



*Call me today!*

**DOYES HOLLAND, REALTOR®**

DHolland@TomSmithLand.com

662.268.6333 office | 662.312.2165 cell



**TomSmithLandandHomes.com**

Information is believed to be accurate but not guaranteed.

# Short walk to T Box Number 6 On Elm Lake Golf Course



*Call me today!*

**DOYES HOLLAND, REALTOR®**  
DHolland@TomSmithLand.com  
662.268.6333 office | 662.312.2165 cell



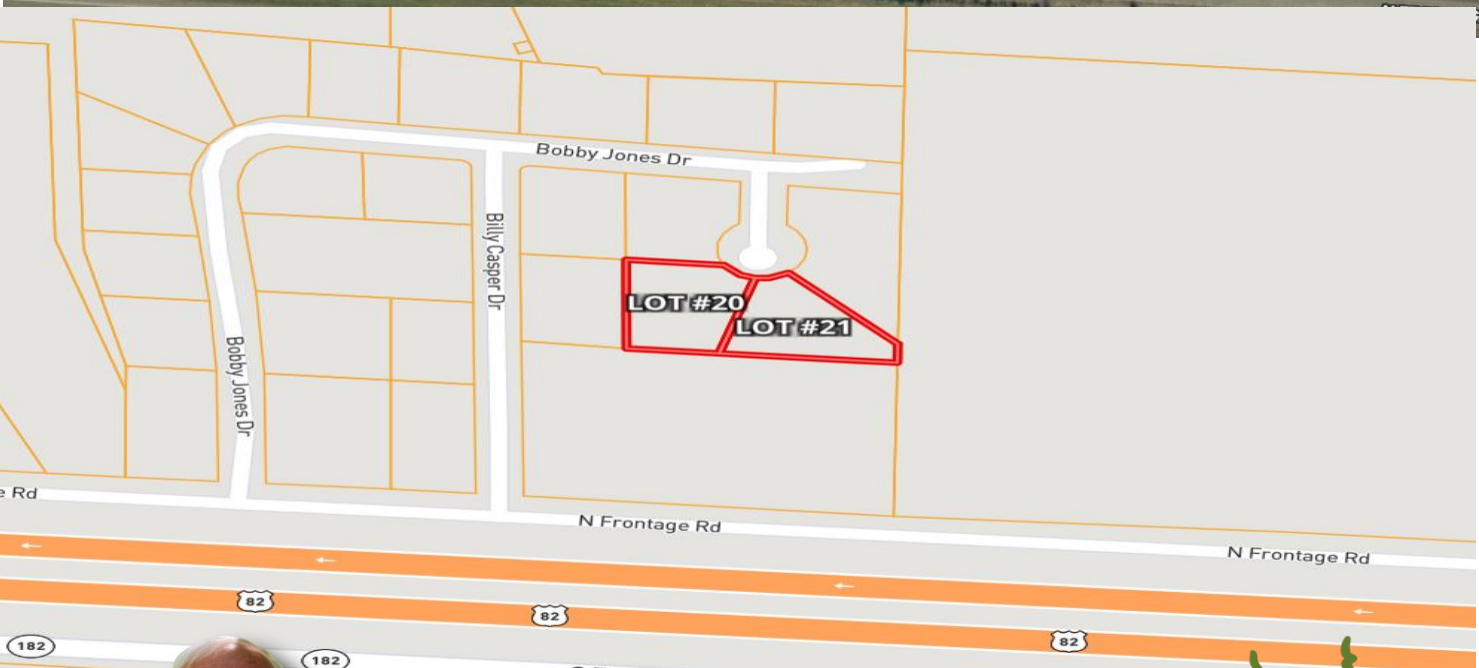
**TomSmithLandandHomes.com**

Information is believed to be accurate but not guaranteed.

# Aerial Map



33.480, -88.548



2011-2020  
BEST  
BROKERAGES

*Call me today!*

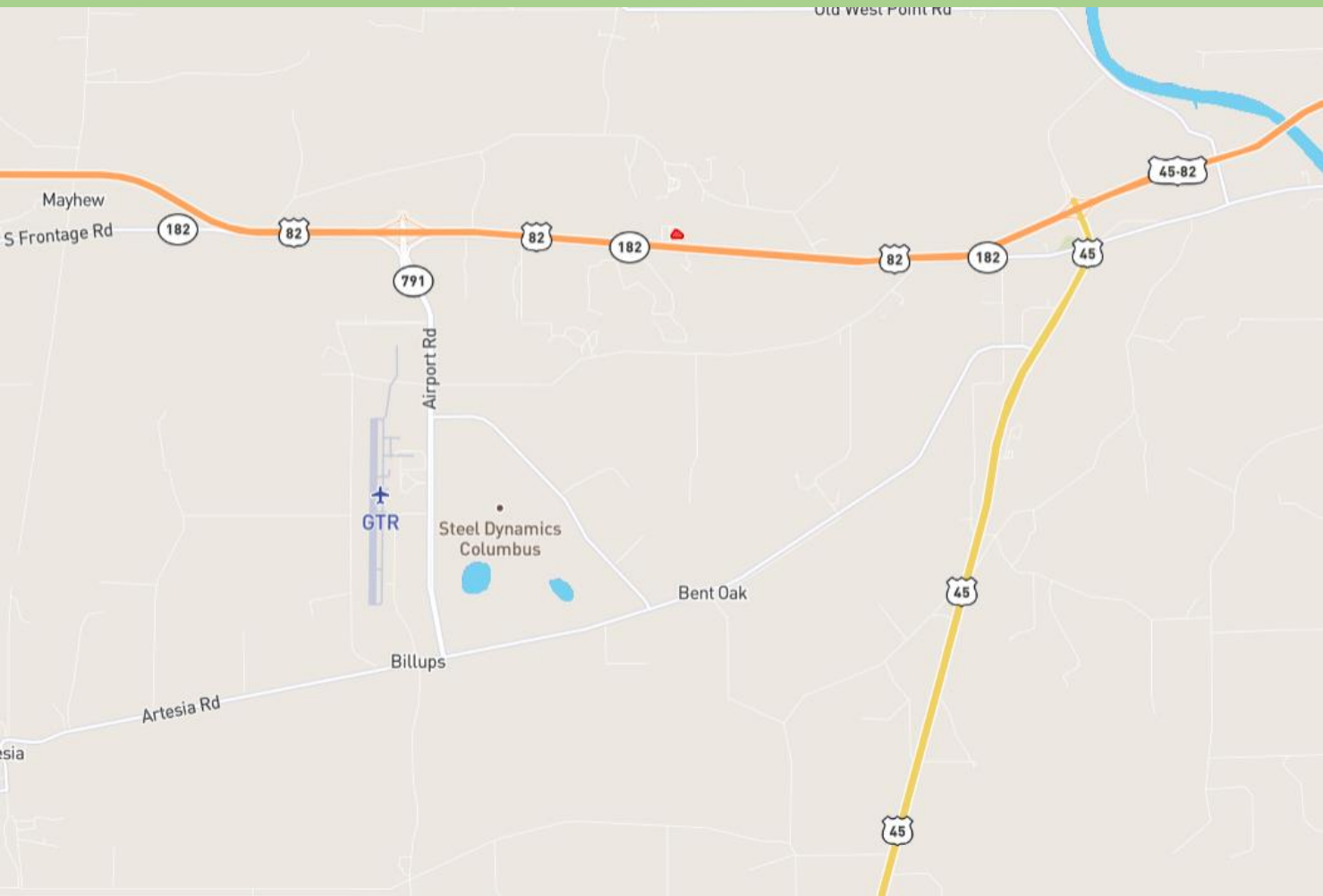
**DOYES HOLLAND, REALTOR®**  
DHolland@TomSmithLand.com  
662.268.6333 office | 662.312.2165 cell



**TomSmithLandandHomes.com**

Information is believed to be accurate but not guaranteed.

# Direction Map



From intersection of North Hwy 82 frontage road and County road 791GTR-Airport Road, travel east on North frontage road 2.2 miles, past The Clinic @ Elm Lake building, then Left on Billy Casper Drive, then right on Bobby Jones Loop, then right on Ben Hogan Circle, at end of Cul-de sac the lots will be directly in front of you. Look for sign



2011-2020  
BEST  
BROKERAGES

*call me today!*

**DOYES HOLLAND, REALTOR®**  
DHolland@TomSmithLand.com  
662.268.6333 office | 662.312.2165 cell



**TomSmithLandandHomes.com**

Information is believed to be accurate but not guaranteed.

# Flood Zone map



2011-2020  
BEST  
BROKERAGES

*call me today!*

**DOYES HOLLAND, REALTOR®**  
DHolland@TomSmithLand.com  
662.268.6333 office | 662.312.2165 cell



**TomSmithLandandHomes.com**

Information is believed to be accurate but not guaranteed.