

87+/- Acres in Oktibbeha County, MS Great Investment Opportunity



\$696,000

Great opportunity for an investment in Oktibbeha County, MS or a place to build that dream home. This 87+/- acre tract offers more than 1,200 feet of paved road frontage on South Montgomery Street, and over 2,500 feet of frontage on Mount Olive Road. This property features well maintained perimeter and cross fencing, a small pond, and existing cattle barn. The pastureland and small home are currently leased. Skinner Creek traverses the middle of the property. This property is located approximately three miles South of Starkville Country Club, and nearly seven miles South of Mississippi State University. A small home is located on the property, but now value has been issued. Utilities are located on South Montgomery Street and Mount Olive Road. For more information, or to schedule a private showing, call Harper Day today!

Directions from intersection of South Montgomery and Poor House Road in Starkville, MS: Travel 1.8 miles south on South Montgomery St towards Atkinson Dr. Turn left onto Mount Olive Road. Property will be on your left. [INTERACTIVE MAP HERE](#)



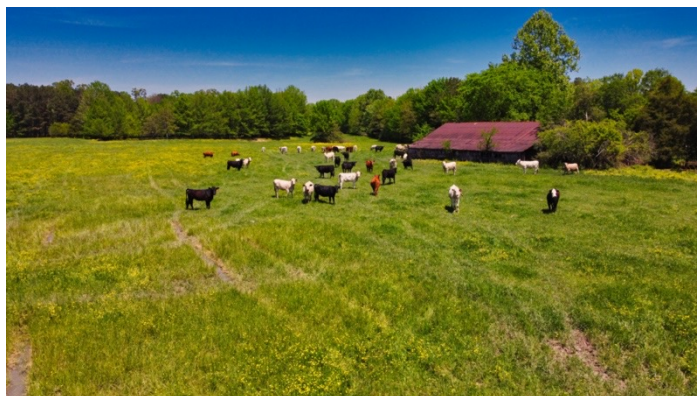
call me today!

HARPER DAY, REALTOR®
Harper@TomSmithLand.com
662.268.6333 office | 662.694.9751 cell



TomSmithLandandHomes.com

Information is believed to be accurate but not guaranteed.



call me today!

HARPER DAY, REALTOR®

Harper@TomSmithLand.com

662.268.6333 office | 662.694.9751 cell

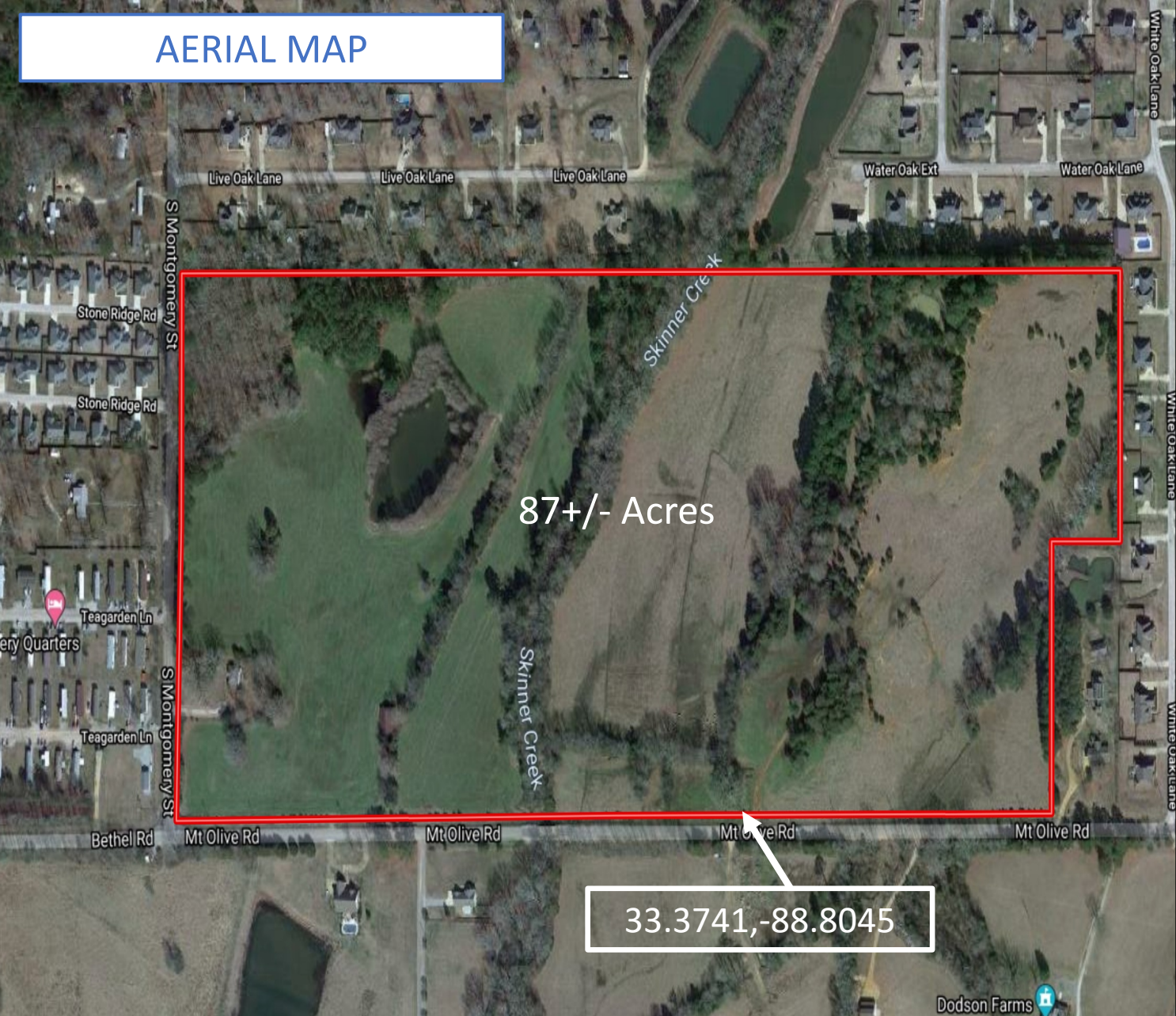


Expect More. Get More.

TomSmithLandandHomes.com

Information is believed to be accurate but not guaranteed.

AERIAL MAP



call me today!

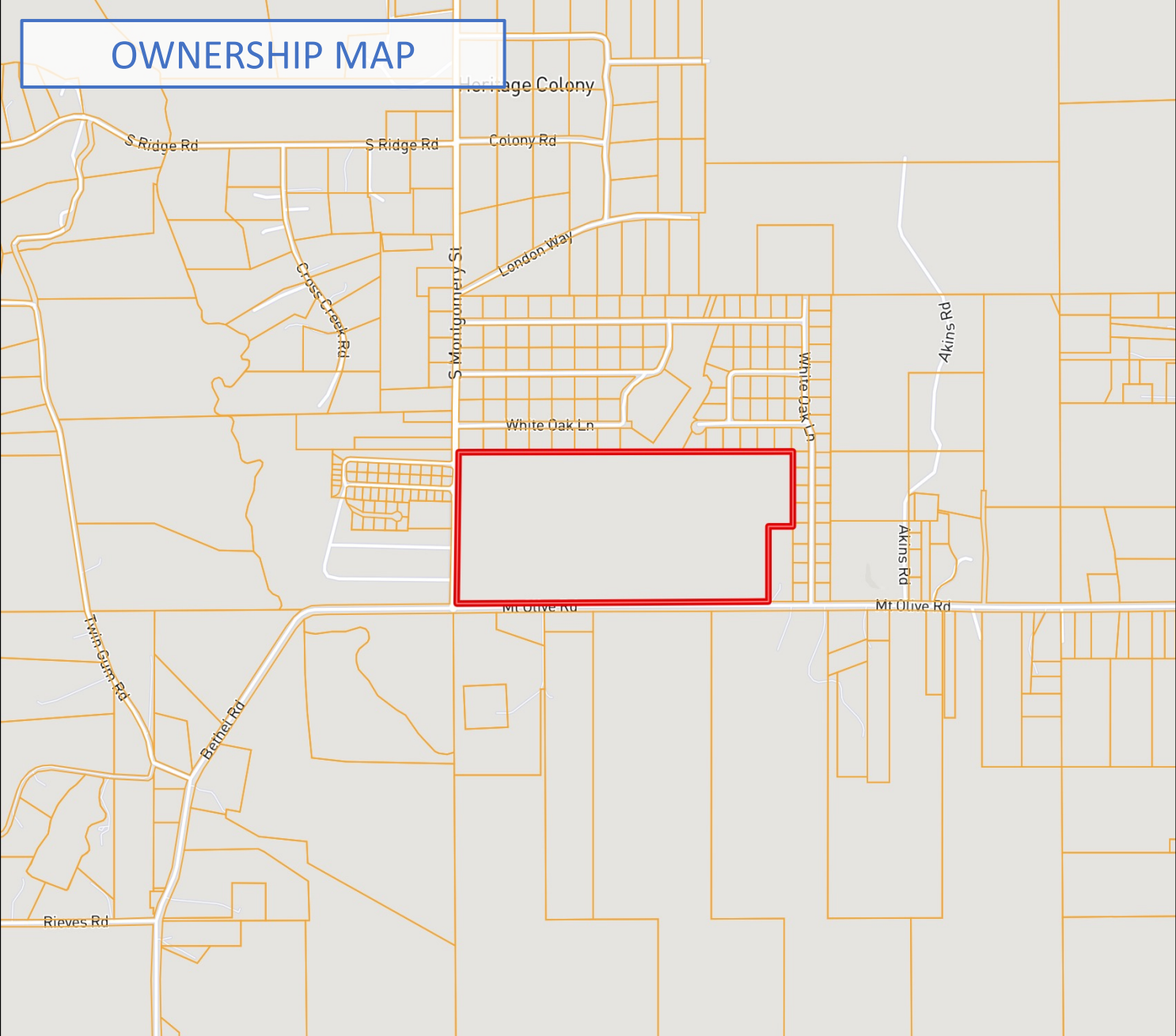
HARPER DAY, REALTOR®
Harper@TomSmithLand.com
662.268.6333 office | 662.694.9751 cell



TomSmithLandandHomes.com

Information is believed to be accurate but not guaranteed.

OWNERSHIP MAP



call me today!

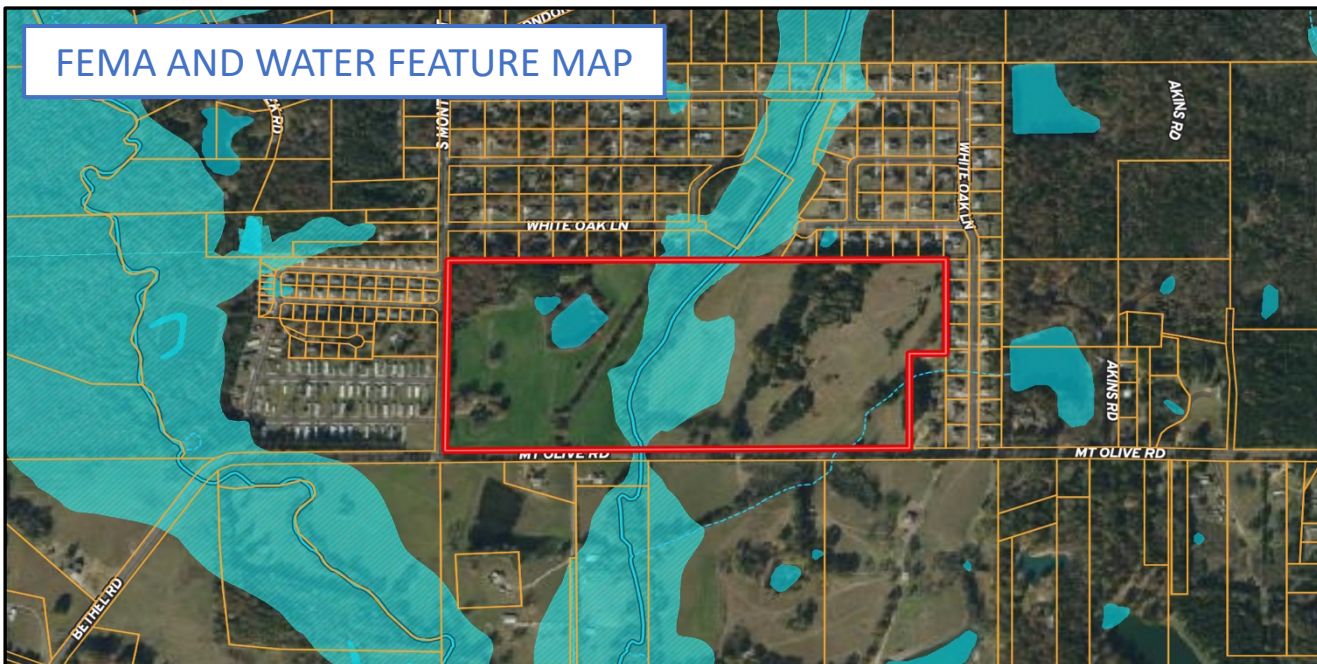
HARPER DAY, REALTOR®
Harper@TomSmithLand.com
662.268.6333 office | 662.694.9751 cell



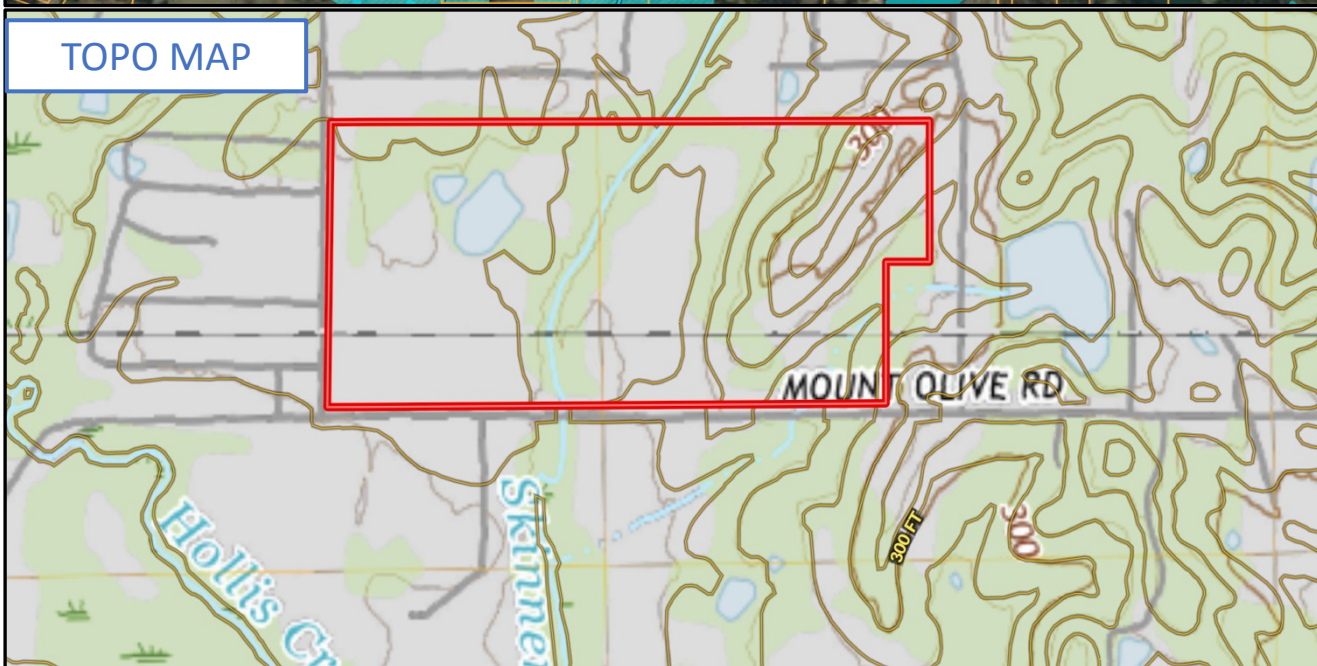
TomSmithLandandHomes.com

Information is believed to be accurate but not guaranteed.

FEMA AND WATER FEATURE MAP



TOPO MAP



call me today!

HARPER DAY, REALTOR®

Harper@TomSmithLand.com

662.268.6333 office | 662.694.9751 cell

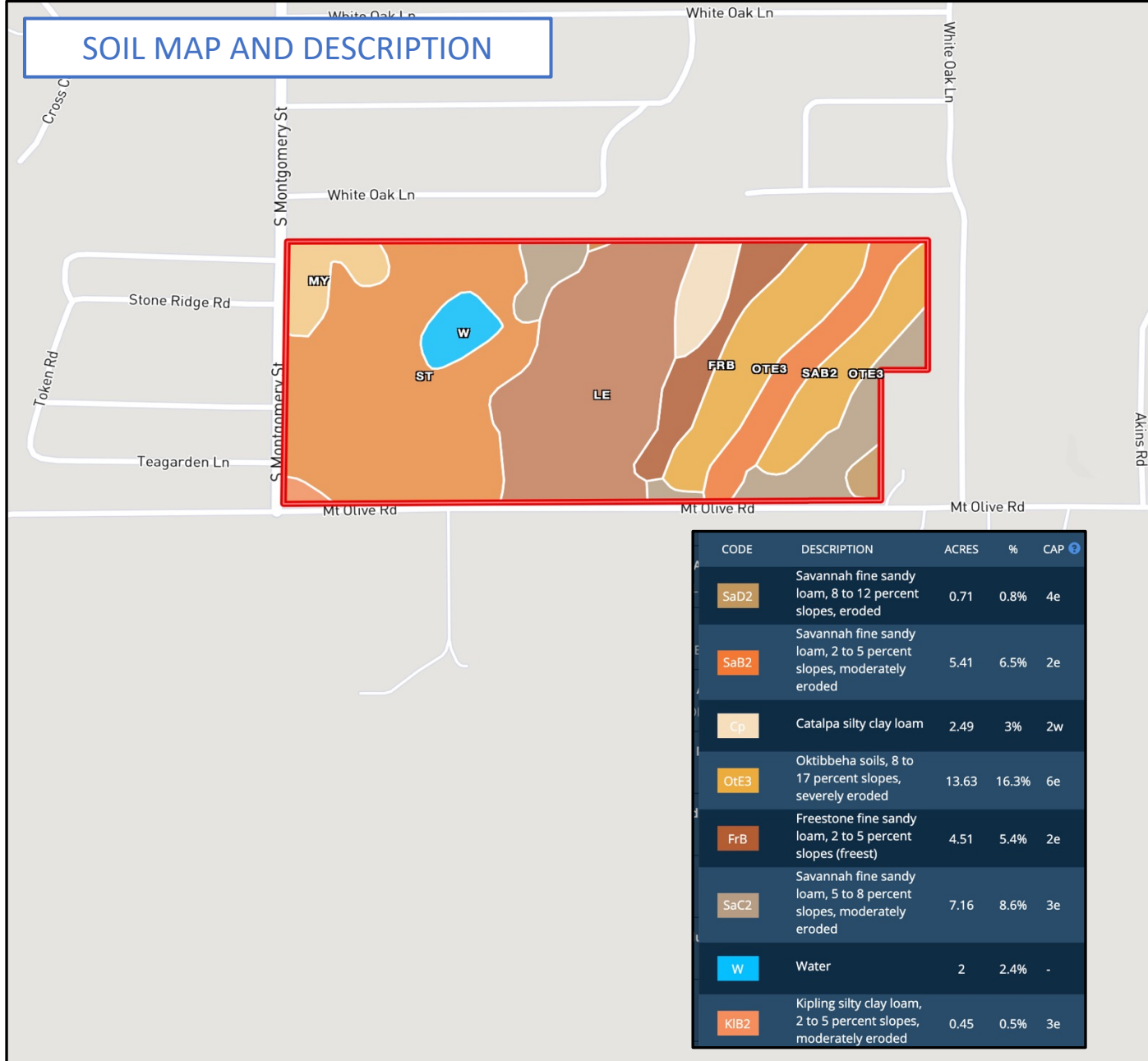


Expect More. Get More.

TomSmithLandandHomes.com

Information is believed to be accurate but not guaranteed.

SOIL MAP AND DESCRIPTION



call me today!

HARPER DAY, REALTOR®

Harper@TomSmithLand.com

662.268.6333 office | 662.694.9751 cell

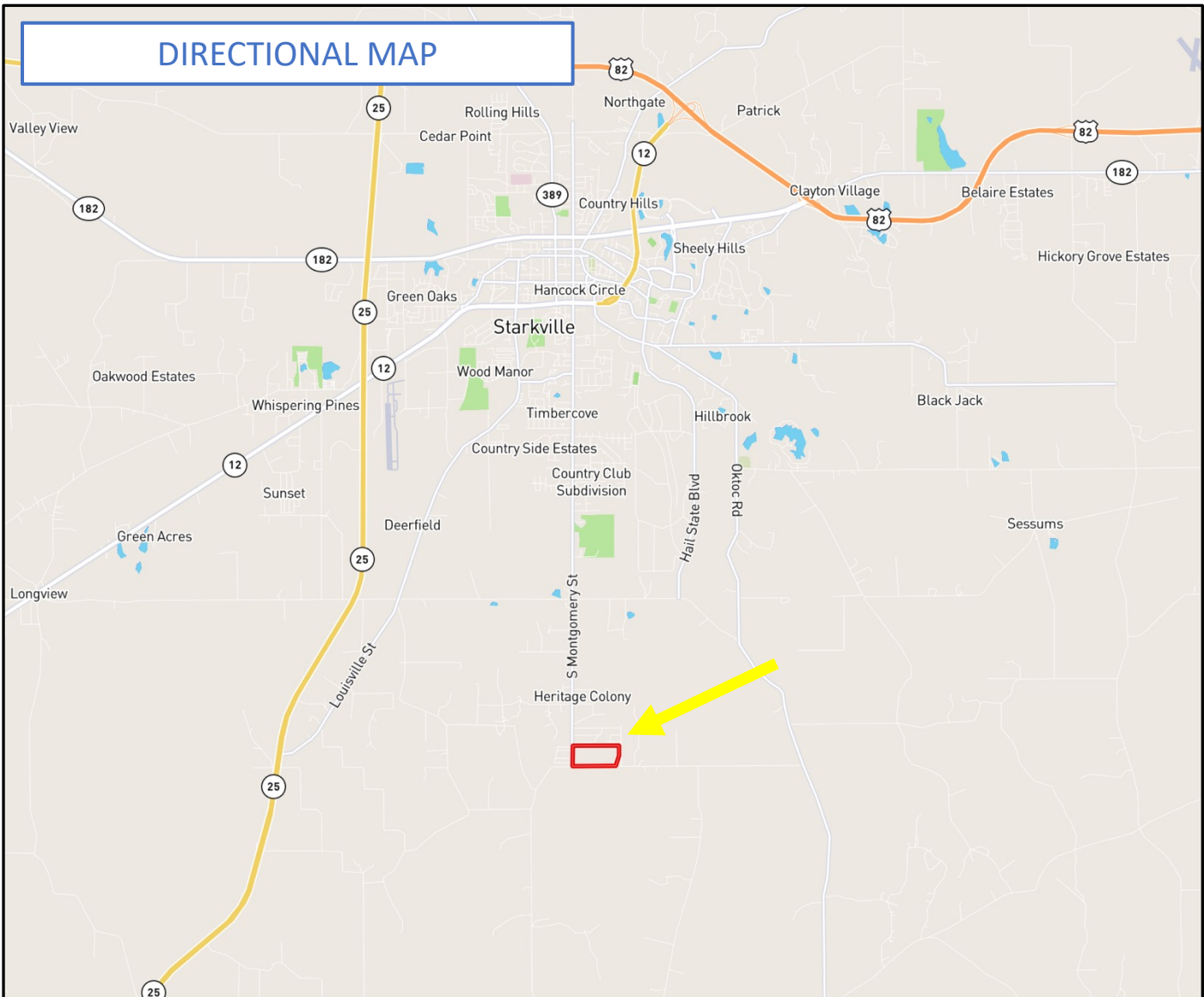


Expect More. Get More.

TomSmithLandandHomes.com

Information is believed to be accurate but not guaranteed.

DIRECTIONAL MAP



Directions from intersection of South Montgomery and Poor House Road in Starkville, MS: Travel 1.8 miles south on South Montgomery St towards Atkinson Dr. Turn left onto Mount Olive Road. Property will be on your left. [INTERACTIVE MAP HERE](#)



call me today!

HARPER DAY, REALTOR®
Harper@TomSmithLand.com
662.268.6333 office | 662.694.9751 cell



TomSmithLandandHomes.com

Information is believed to be accurate but not guaranteed.