

130.64± Acre Hunting Tract Holmes County, MS

\$260,600



- Primarily Pine-Hardwood Mix
- Outstanding Deer and Turkey Habitat
- 4 Food Plots
- Internal Trails
- Two, Small Streams
- Cleared Cabin Location
- Power and Water Available
- Approximately 65 Miles from Jackson, MS



Directions from Durant, MS: From the intersection of Highway 51 and Mulberry Street, drive west on Mulberry Street for 0.3 miles. At the stop sign proceed straight onto Castalian Springs Road and in 1.9 miles, the property gate will be on your right.



ADAM HESTER, REALTOR®
Adam@TomSmithLand.com
601.898.2772 office | 601.506.5058 cell



Expect More. Get More.

call us today!



PETE PRISOCK, REALTOR®
Pete@TomSmithHomes.com
601.898.2772 office | 601.291.5863 cell

TomSmithLandandHomes.com

Information is believed to be accurate but not guaranteed.



This 130.64± acre tract provides the ingredients one needs for a hunting property or weekend getaway. Located near the town of Durant, MS in Holmes County, the property primarily consists of a pine-hardwood mixture with rolling terrain and internal trails. For deer and turkey, the habitat offers thick areas for bedding, two streams for a water source, open hardwood bottoms and four food plots. There are areas where additional food plots can be opened up and old trails reclaimed. There is a secluded spot that would be great for a small camp and utilities are available at the road. Enjoy the property as is or create your own personal paradise! For more information, call Pete Prisock or Adam Hester today.



ADAM HESTER, REALTOR®
Adam@TomSmithLand.com
601.898.2772 office | 601.506.5058 cell



PETE PRISOCK, REALTOR®
Pete@TomSmithHomes.com
601.898.2772 office | 601.291.5863 cell

TomSmithLandandHomes.com

Information is believed to be accurate but not guaranteed.





ADAM HESTER, REALTOR®
Adam@TomSmithLand.com
601.898.2772 office | 601.506.5058 cell

PETE PRISOCK, REALTOR®
Pete@TomSmithHomes.com
601.898.2772 office | 601.291.5863 cell

TomSmithLandandHomes.com

Information is believed to be accurate but not guaranteed.





ADAM HESTER, REALTOR®
Adam@TomSmithLand.com
601.898.2772 office | 601.506.5058 cell



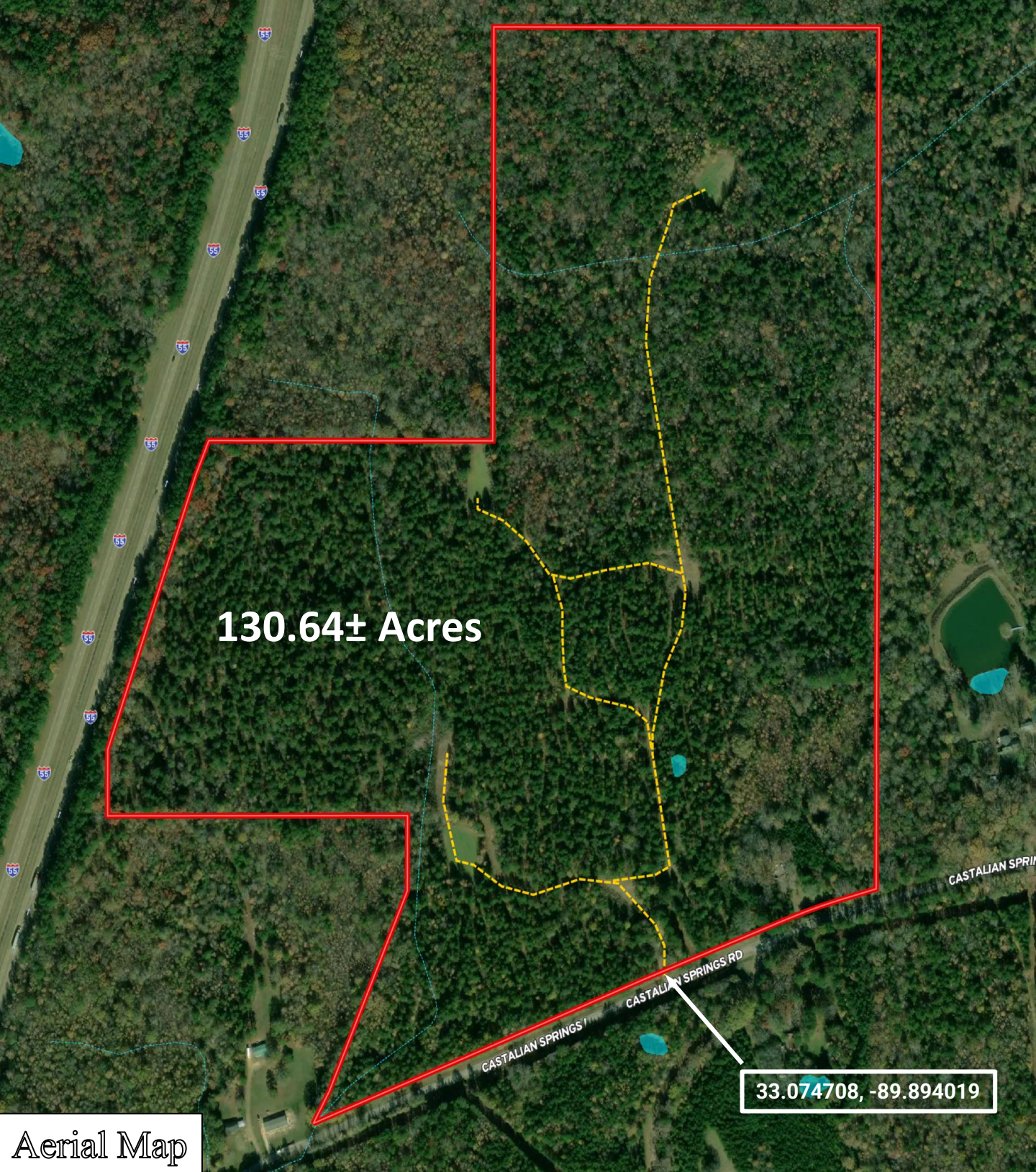
Expect More. Get More.

PETE PRISOCK, REALTOR®
Pete@TomSmithHomes.com
601.898.2772 office | 601.291.5863 cell

TomSmithLandandHomes.com

Information is believed to be accurate but not guaranteed.





130.64± Acres

33.074708, -89.894019

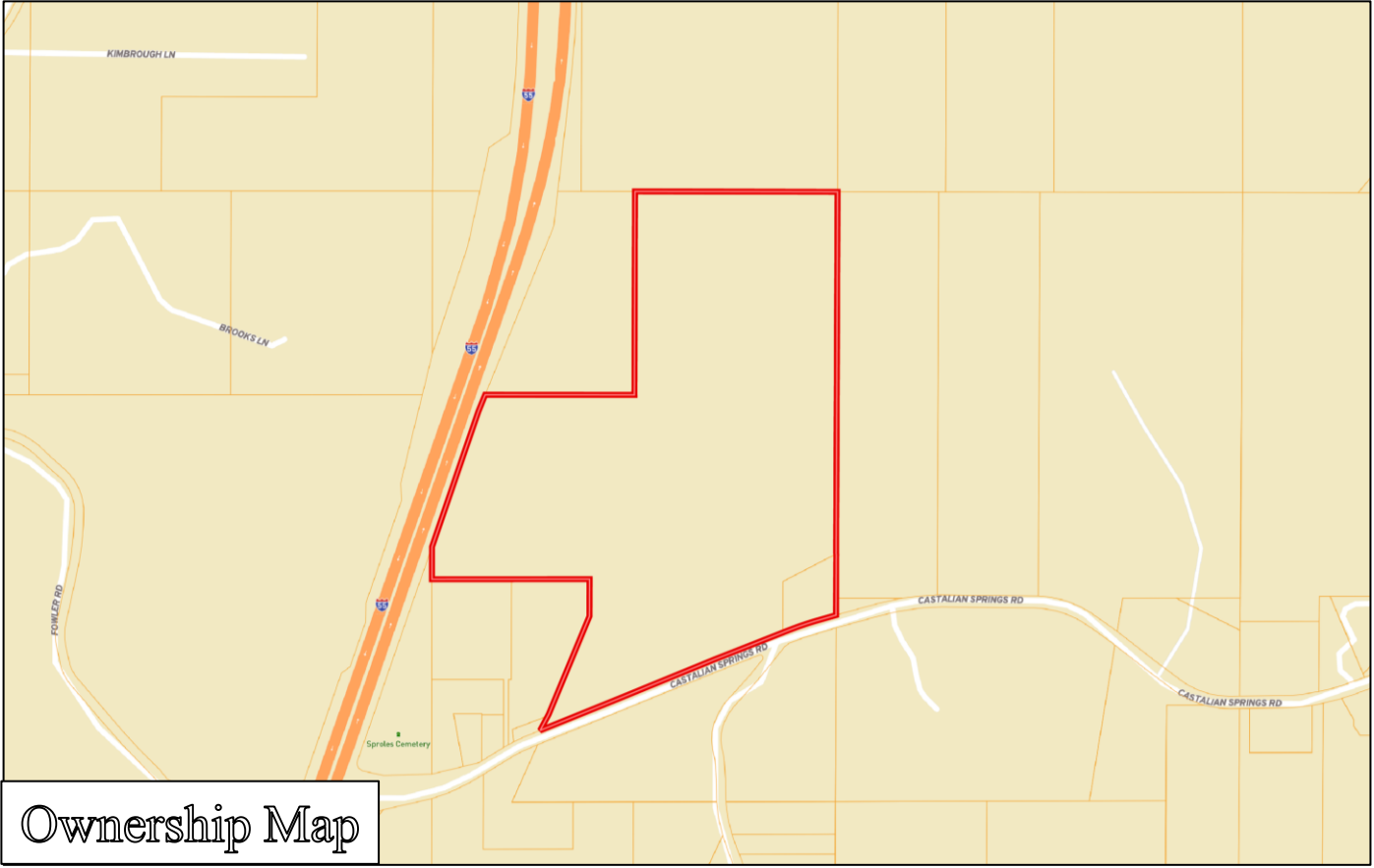
Aerial Map



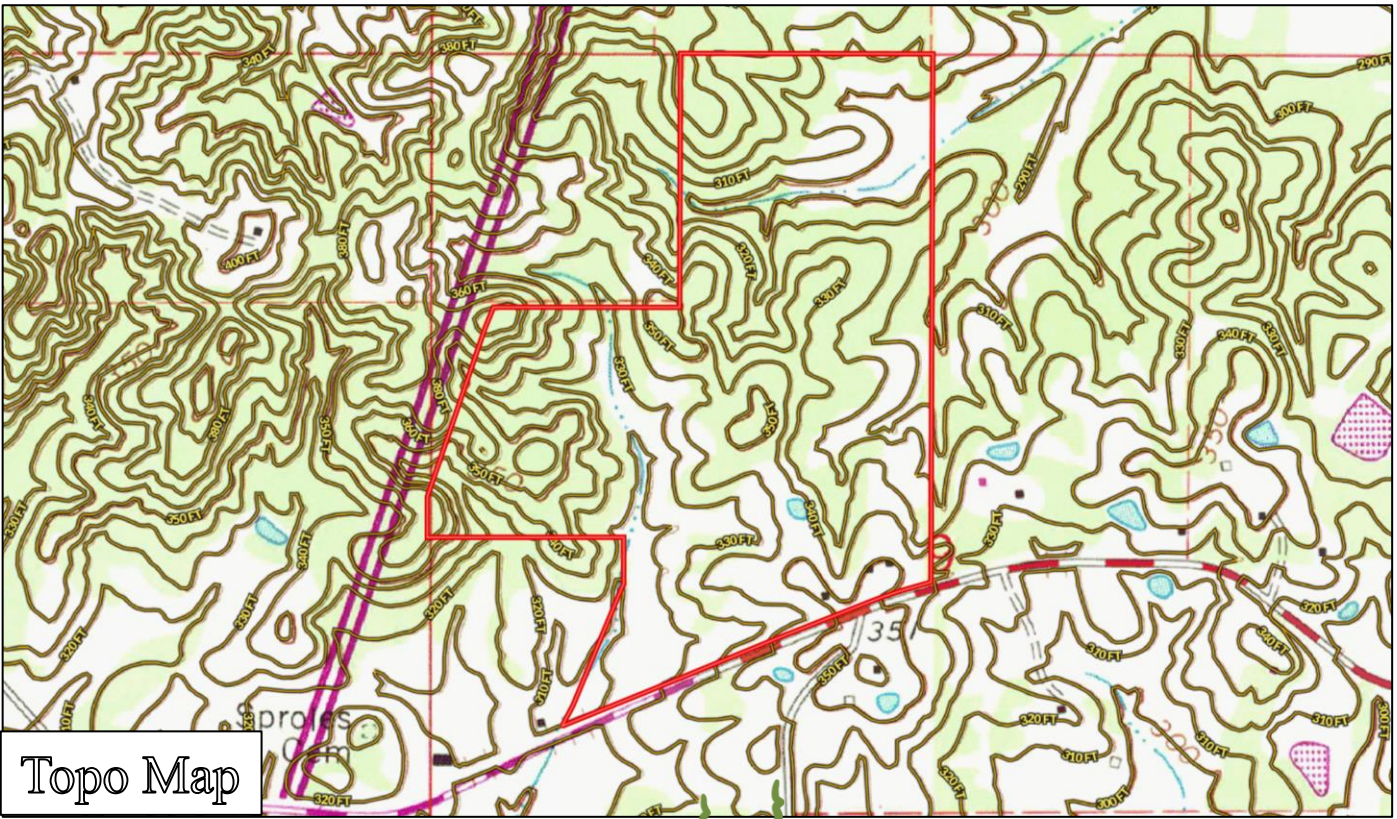
ADAM HESTER, REALTOR®
Adam@TomSmithLand.com
601.898.2772 office | 601.506.5058 cell



PETE PRISOCK, REALTOR®
Pete@TomSmithHomes.com
601.898.2772 office | 601.291.5863 cell



Ownership Map



Topo Map



ADAM HESTER, REALTOR®
 Adam@TomSmithLand.com
 601.898.2772 office | 601.506.5058 cell

PETE PRISOCK, REALTOR®
 Pete@TomSmithHomes.com
 601.898.2772 office | 601.291.5863 cell

TomSmithLandandHomes.com

Information is believed to be accurate but not guaranteed.





Infrared Map



Directions from Durant, MS: From the intersection of Highway 51 and Mulberry Street, drive west on Mulberry Street for 0.3 miles. At the stop sign proceed straight onto Castalian Springs Road and in 1.9 miles, the property gate will be on your right.



ADAM HESTER, REALTOR®
 Adam@TomSmithLand.com
 601.898.2772 office | 601.506.5058 cell



PETE PRISOCK, REALTOR®
 Pete@TomSmithHomes.com
 601.898.2772 office | 601.291.5863 cell

Information is believed to be accurate but not guaranteed.

