

3/2 Mobile Home on 1.35 +/- Acres Lincoln County , MS



\$89,000

Address: 1360 Gloria Trl NE Brookhaven MS 39601

This well maintained three bedroom two bath mobile home sits on 1.35 +/- acres with approximately 1,700 sq ft of open floor plan to entertain and enjoy your family. This layout provides two living spaces, one with a wood burning fireplace and the second with a built in entertainment center. The oversized island in the kitchen is clothed in a beautiful, durable formica countertop which provides extra seating as well as space for a holiday or game day spread. The master bathroom offers a seated shower and a jetted tub. The pole barn out back provides covered space for guests, shelter for vehicles from the elements and could be finished out for a great workshop/mancafe. This property is located close to downtown Brookhaven with a 5 minute drive to restaurants, grocery stores and hospitals. Call Sabrina today to view!



call me today!

SABRINA WOLFF, REALTOR®
Sabrina@TomSmithHomes.com
601.990.5070 office | 601.754.3763 cell
126 W. Monticello | Brookhaven, MS 39601



TomSmithLandandHomes.com

Information is believed to be accurate but not guaranteed.



2011-2018
BEST
BROKERAGES

call me today!

SABRINA WOLFF, REALTOR®
Sabrina@TomSmithHomes.com
601.990.5070 office | 601.754.3763 cell
126 W. Monticello | Brookhaven, MS 39601



Expect More. Get More.

TomSmithLandandHomes.com

Information is believed to be accurate but not guaranteed.



2011-2018
LANDREPORT
BEST
BROKERAGES

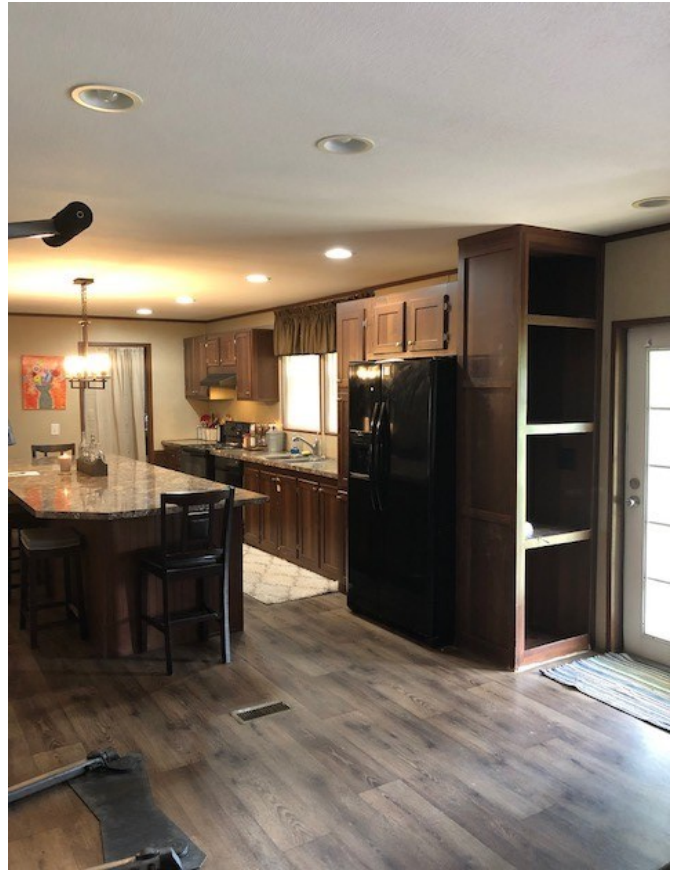
Call me today!

SABRINA WOLFF, REALTOR®
Sabrina@TomSmithHomes.com
601.990.5070 office | 601.754.3763 cell
126 W. Monticello | Brookhaven, MS 39601



TomSmithLandandHomes.com

Information is believed to be accurate but not guaranteed.



2011-2018
BEST
BROKERAGES

Call me today!

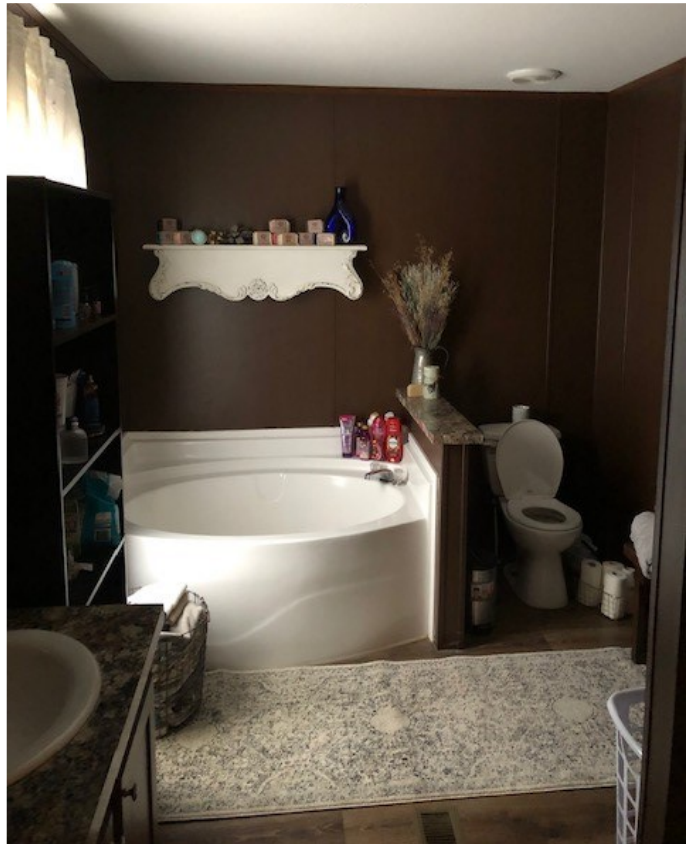
SABRINA WOLFF, REALTOR®
Sabrina@TomSmithHomes.com
601.990.5070 office | 601.754.3763 cell
126 W. Monticello | Brookhaven, MS 39601



Expect More. Get More.

TomSmithLandandHomes.com

Information is believed to be accurate but not guaranteed.



2011-2018
AMERICA'S
BEST
BROKERAGES

Call me today!

SABRINA WOLFF, REALTOR®
Sabrina@TomSmithHomes.com
601.990.5070 office | 601.754.3763 cell
126 W. Monticello | Brookhaven, MS 39601



TomSmithLandandHomes.com

Information is believed to be accurate but not guaranteed.



Aerial Map



call me today!

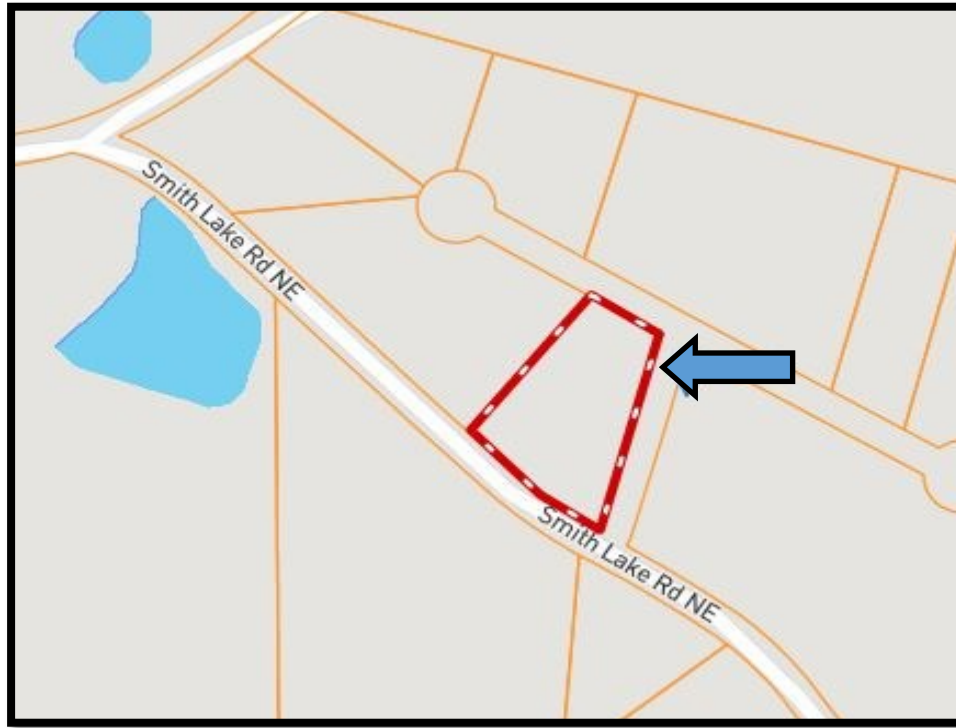
SABRINA WOLFF, REALTOR®
Sabrina@TomSmithHomes.com
601.990.5070 office | 601.754.3763 cell
126 W. Monticello | Brookhaven, MS 39601



Expect More. Get More.

TomSmithLandandHomes.com

Information is believed to be accurate but not guaranteed.



Ownership Map



call me today!

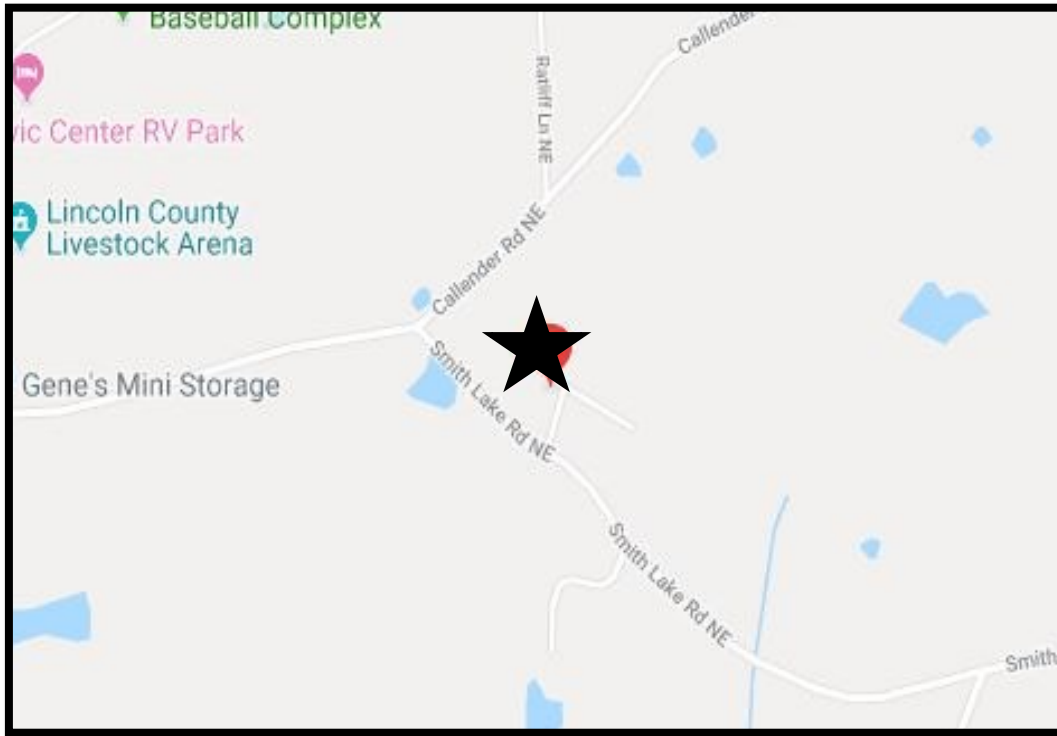
SABRINA WOLFF, REALTOR®
Sabrina@TomSmithHomes.com
601.990.5070 office | 601.754.3763 cell
126 W. Monticello | Brookhaven, MS 39601



Expect More. Get More.

TomSmithLandandHomes.com

Information is believed to be accurate but not guaranteed.



Directional Map

Address: 1360 Gloria Trl NE Brookhaven MS, 39601

Directions from Hwy 84 W in Brookhaven: Travel North on County Farm Rd. Turn left onto E. Monticello, followed by a right onto Beltline Dr. In less than one mile turn right onto Smith Lake Rd. Gloria Trl will be on the left.



call me today!

SABRINA WOLFF, REALTOR®
Sabrina@TomSmithHomes.com
601.990.5070 office | 601.754.3763 cell
126 W. Monticello | Brookhaven, MS 39601



TomSmithLandandHomes.com

Information is believed to be accurate but not guaranteed.