

Secluded Homesite

40± ACRES IN RANKIN COUNTY, MS



Welcome to your new secluded homesite in Rankin County, MS. This beautiful property is located just minutes from downtown Brandon and Highway 471 near Baker Lane. The pine trees were planted in 1994 and thinned once in 2009. This secluded property would make a good home site, continue to grow trees, or has the potential to be cleared and turned into pasture land. The property is in one of the best school districts and one of the safest counties in the state. Give Bill a call today!

DIRECTIONS: From Highway 80 in downtown Brandon, MS travel Trickhambridge Road for 4.6 miles to Andrew Chapel Road. Turn left at the four way and travel 1.6 miles. Turn right onto Palm Hill Road and travel .4 miles. The property will be on the right. GOOGLE MAPS LINK



call me today!

BILL PATRICK, REALTOR®

Bill@TomSmithLand.com

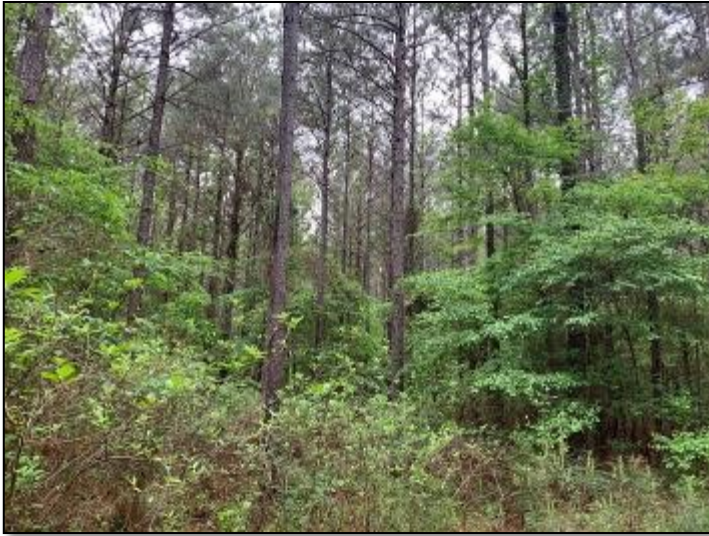
601.898.2772 office | 601.573.0749 cell



Expect More. Get More.

TomSmithLandandHomes.com

Information is believed to be accurate but not guaranteed.



BILL PATRICK, REALTOR®
Bill@TomSmithLand.com
601.898.2772 office | 601.573.0749 cell



TomSmithLandandHomes.com

Information is believed to be accurate but not guaranteed.

AERIAL MAP



Click [HERE](#) for an Interactive Map



BILL PATRICK, REALTOR®
Bill@TomSmithLand.com
601.898.2772 office | 601.573.0749 cell

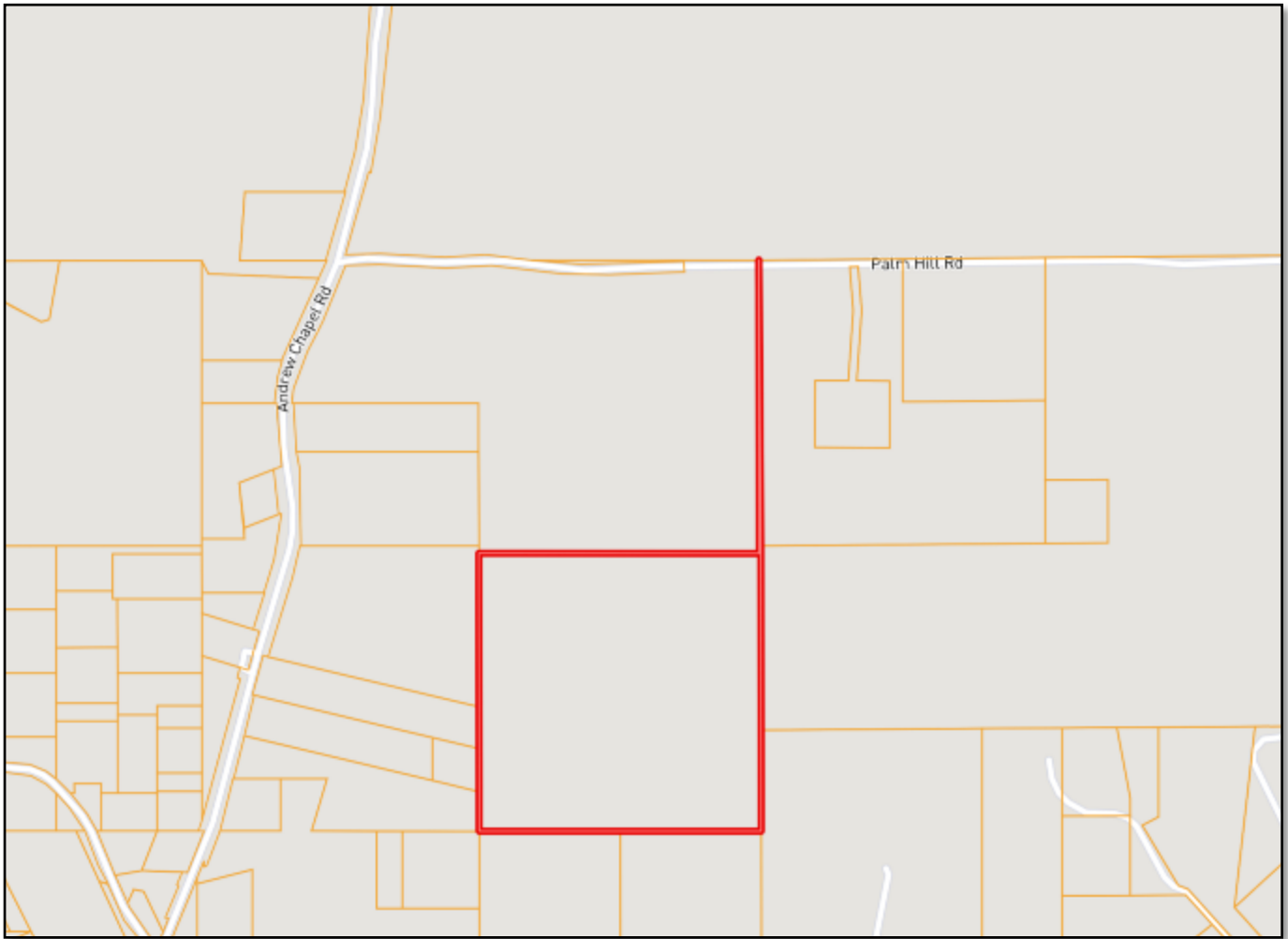


Expect More. Get More.

TomSmithLandandHomes.com

Information is believed to be accurate but not guaranteed.

OWNERSHIP MAP



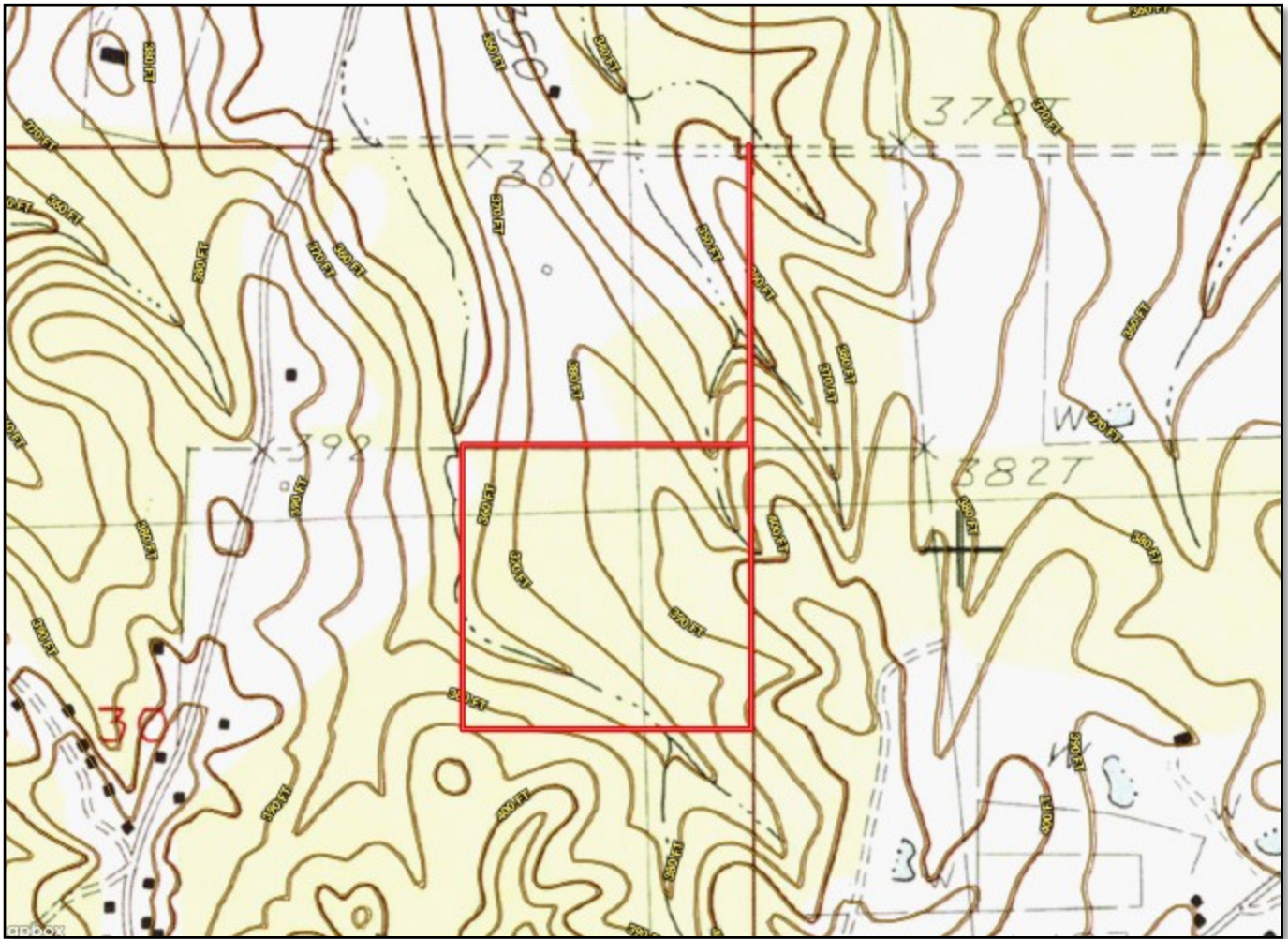
BILL PATRICK, REALTOR®
Bill@TomSmithLand.com
601.898.2772 office | 601.573.0749 cell



TomSmithLandandHomes.com

Information is believed to be accurate but not guaranteed.

TOPO MAP



BILL PATRICK, REALTOR®
Bill@TomSmithLand.com
601.898.2772 office | 601.573.0749 cell

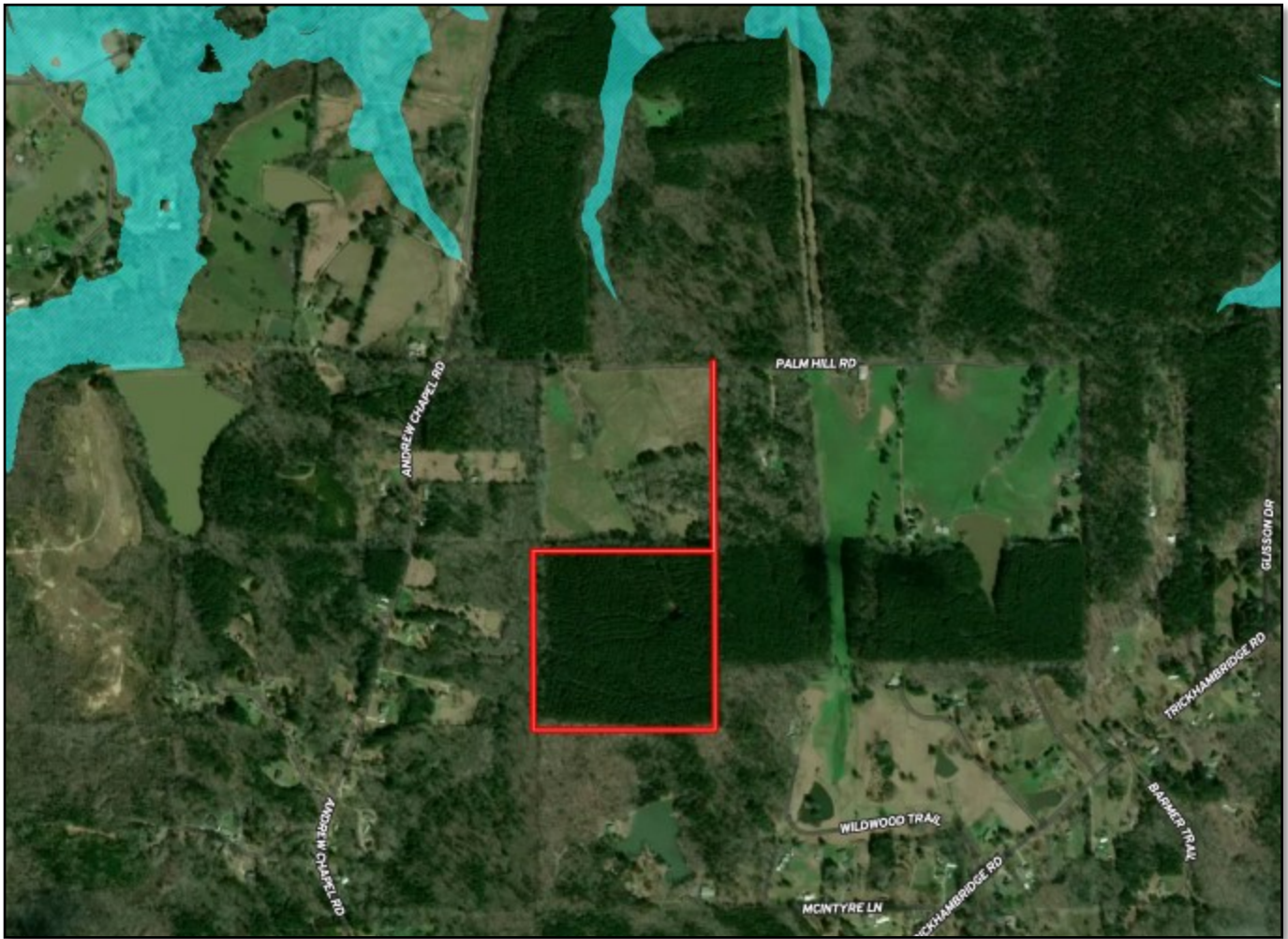


Expect More. Get More.

TomSmithLandandHomes.com

Information is believed to be accurate but not guaranteed.

FLOOD MAP



BILL PATRICK, REALTOR®
Bill@TomSmithLand.com
601.898.2772 office | 601.573.0749 cell

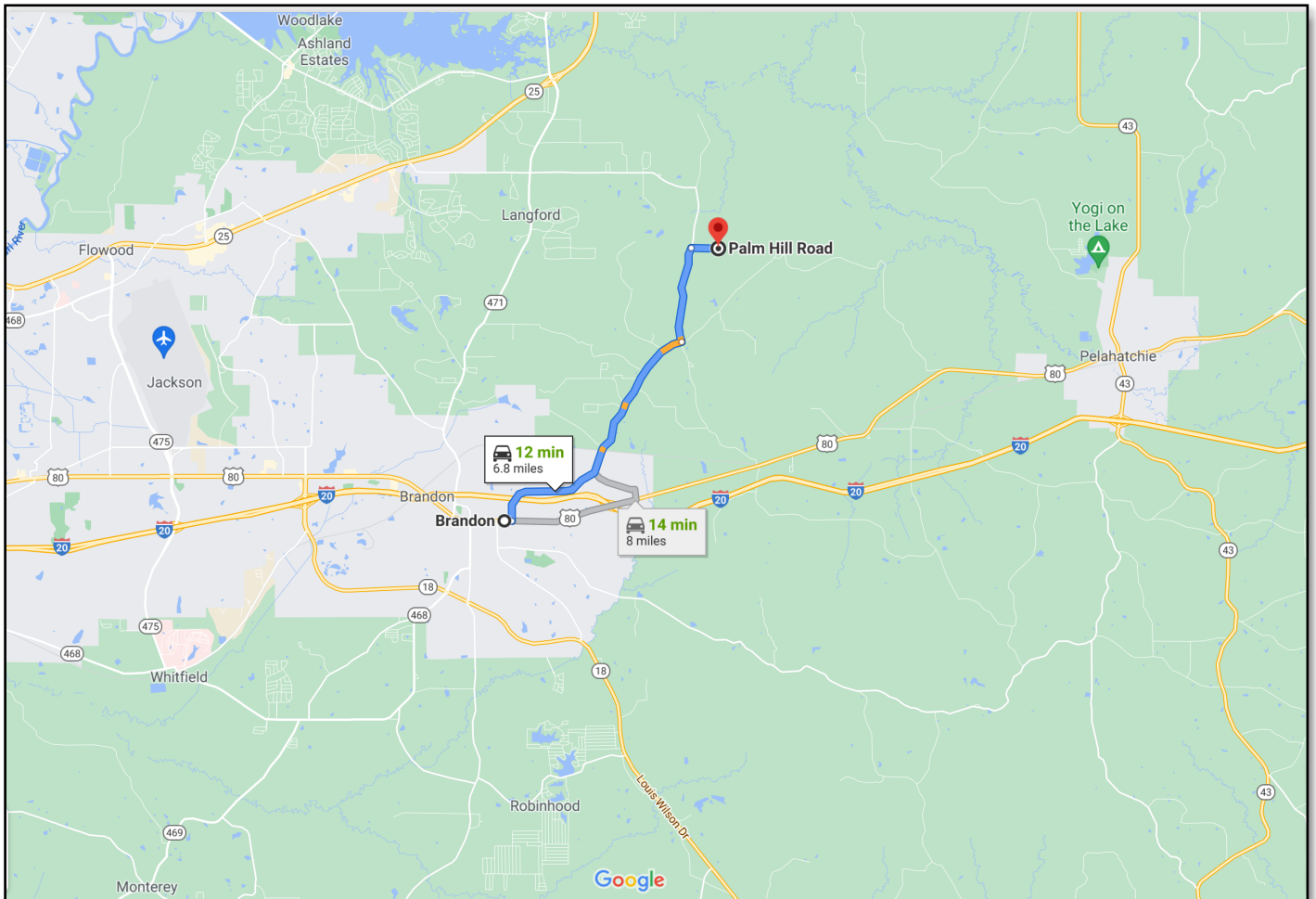


Expect More. Get More.

TomSmithLandandHomes.com

Information is believed to be accurate but not guaranteed.

DIRECTIONAL MAP



DIRECTIONS: From Highway 80 in downtown Brandon, MS travel Trickhambridge Road for 4.6 miles to Andrew Chapel Road. Turn left at the four way and travel 1.6 miles. Turn right onto Palm Hill Road and travel .4 miles. The property will be on the right. [GOOGLE MAPS LINK](#)



call me today!

BILL PATRICK, REALTOR®

Bill@TomSmithLand.com

601.898.2772 office | 601.573.0749 cell



Expect More. Get More.

TomSmithLandandHomes.com

Information is believed to be accurate but not guaranteed.