

52 +/- Acres In Oktibbeha County, MS

Young Timber Investment/Recreational Tract

\$1,400/Acre



This 52+/- acre Oktibbeha County, MS property has the location and uniqueness to be your next hunting/recreational paradise. A 2019 clear-cut, planted in 2020 offers a long-term timber investment while providing ample food and cover for various wildlife species. It borders the Tombigbee National Forest with a rolling topography and is within 25 minutes of Starkville. The property is perfect for any outdoor enthusiast looking for a hunting or camp location. Sharp Road divides the property with 29.6+/- acres north of the road and 22.4+/- acres on the south. Utilities are available. Hunt your own property or enjoy the Tombigbee National Forest. Call Michael Halfacre today for more details and to schedule a private showing.

Directions from Sturgis, MS; Travel south on Sturgis Louisville Road for 3 miles and turn right onto Sharp Rd. Travel 3 miles to property on both sides of road, marked with signs.



Call me today!

MICHAEL HALFACRE, MS REGISTERED FORESTER, ASSOC. BROKER
MHalfacre@TomSmithLand.com
662.268.6333 office | 662.242.4220 cell



TomSmithLandandHomes.com

Information is believed to be accurate but not guaranteed.



MICHAEL HALFACRE, MS REGISTERED FORESTER, ASSOC. BROKER
 MHalfacre@TomSmithLand.com
 662.268.6333 office | 662.242.4220 cell



TomSmithLandandHomes.com

Information is believed to be accurate but not guaranteed.



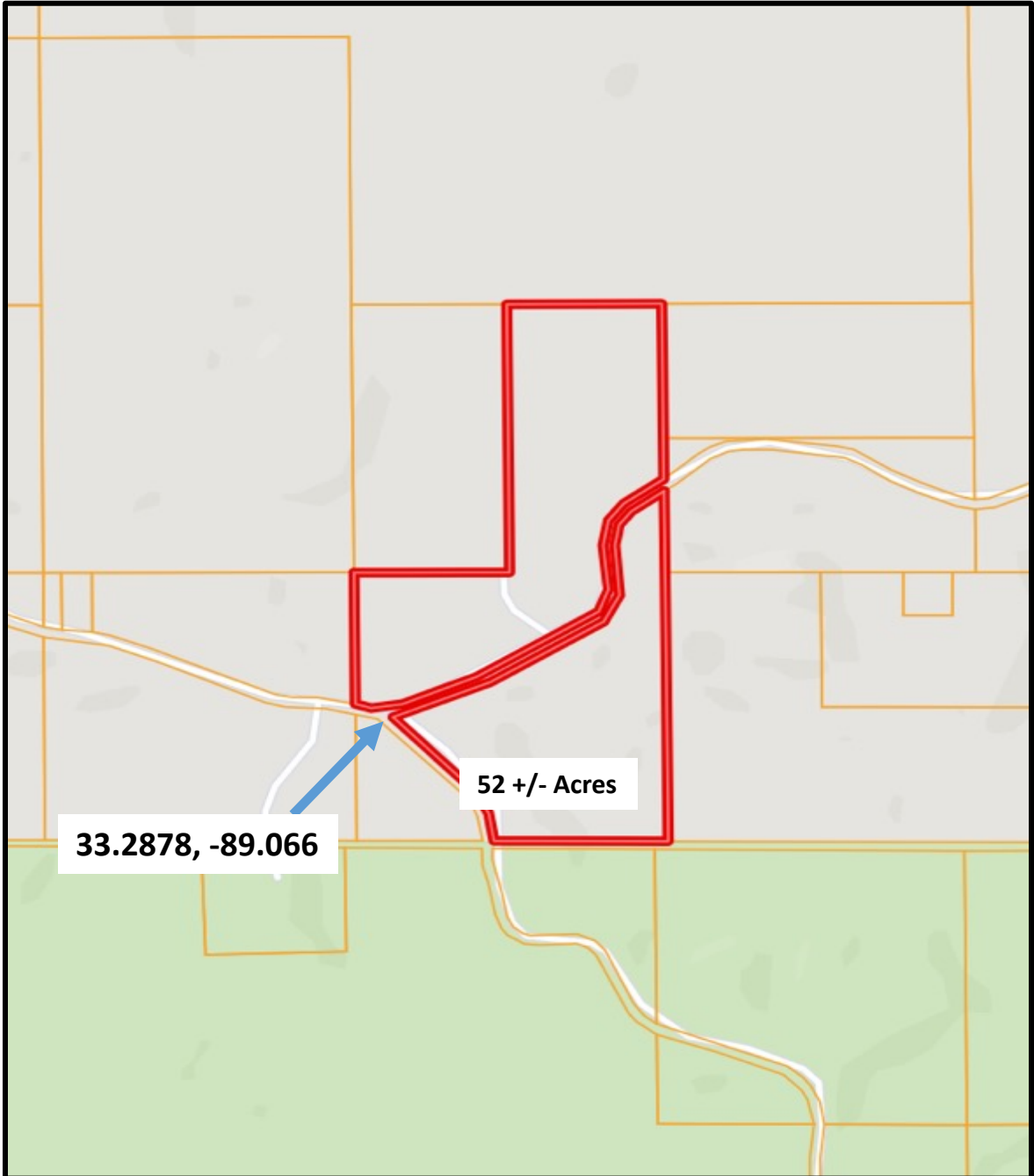
MICHAEL HALFACRE, MS REGISTERED FORESTER, ASSOC. BROKER
 MHalfacre@TomSmithLand.com
 662.268.6333 office | 662.242.4220 cell



TomSmithLandandHomes.com

Information is believed to be accurate but not guaranteed.

Ownership Map



MICHAEL HALFACRE, MS REGISTERED FORESTER, ASSOC. BROKER

MHalfacre@TomSmithLand.com

662.268.6333 office | 662.242.4220 cell



TomSmithLandandHomes.com

Information is believed to be accurate but not guaranteed.



Aerial Photograph



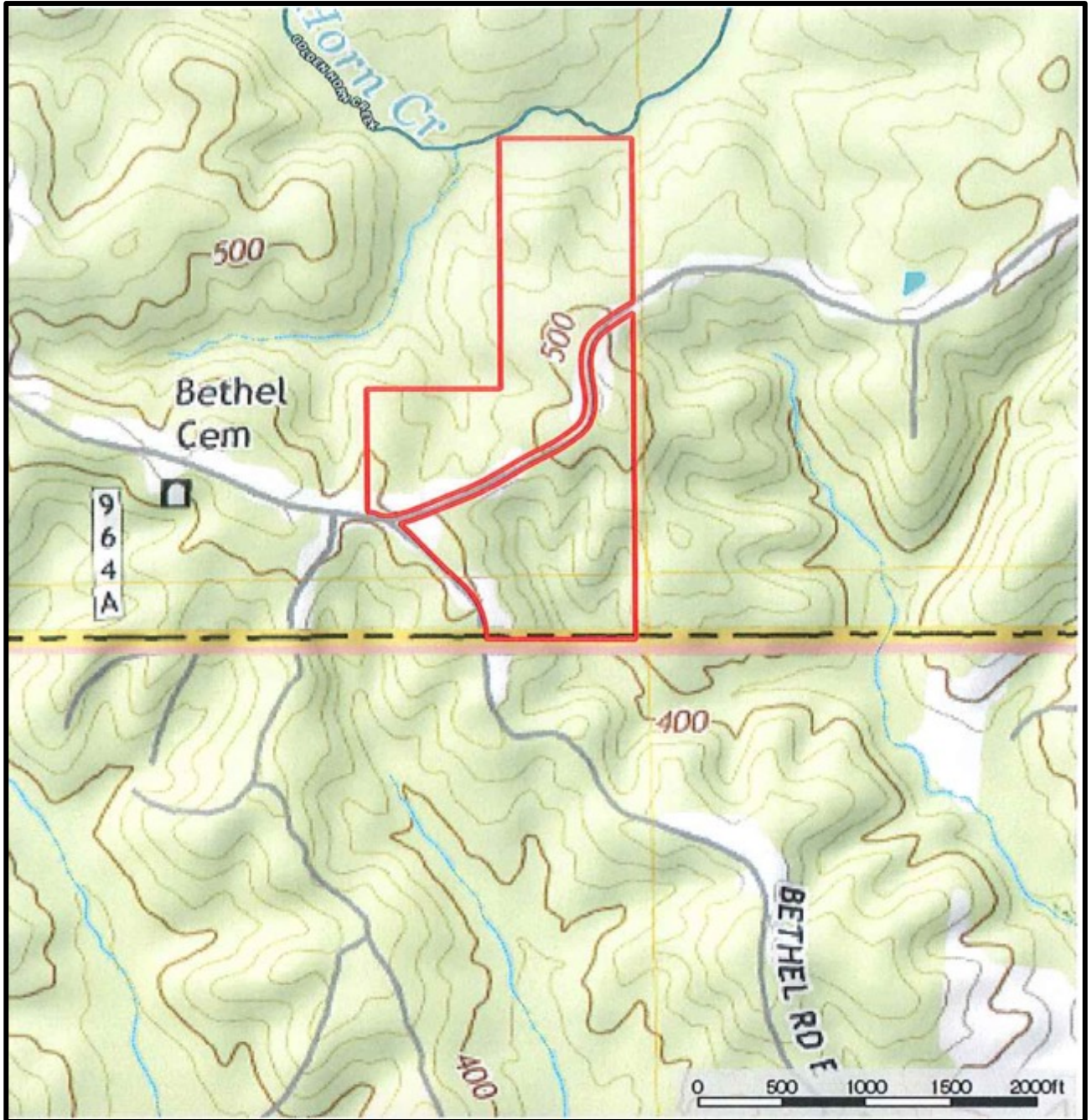
MICHAEL HALFACRE, MS REGISTERED FORESTER, ASSOC. BROKER
MHalfacre@TomSmithLand.com
662.268.6333 office | 662.242.4220 cell



TomSmithLandandHomes.com

Information is believed to be accurate but not guaranteed.

Topographic Map



MICHAEL HALFACRE, MS REGISTERED FORESTER, ASSOC. BROKER

MHalfacre@TomSmithLand.com

662.268.6333 office | 662.242.4220 cell



Expect More. Get More.

TomSmithLandandHomes.com

Information is believed to be accurate but not guaranteed.



Directional Map



Directions from Sturgis, MS; Travel south on Sturgis Louisville Road for 3 miles and turn right onto Sharp Rd. Travel 3 miles to property on both sides of road, marked with signs.



Call me today!

MICHAEL HALFACRE, MS REGISTERED FORESTER, ASSOC. BROKER

MHalfacre@TomSmithLand.com

662.268.6333 office | 662.242.4220 cell



TomSmithLandandHomes.com

Information is believed to be accurate but not guaranteed.