

30.49+/- Affordable Recreational Acres Lawrence and Jefferson Davis County, MS



\$61,000

If you have been looking for a small hunting and recreational tract for an affordable price, you've found it! This 30.49+/- acre property is all wooded and is located in the northeast corner of Lawrence County with 8+/- acres situated across the county line in Jefferson Davis County with a mature mix of hardwood and pines. The West Prong Silver Creek runs along the east side of the property giving the local wildlife a year round water source.

Take advantage of this great opportunity! Call Chris today to schedule a private viewing.

Directions from New Hebron, MS: Travel north on Highway 43 from for 2.1 miles. The property will be on your right just before the Simpson County line.



Call me today!

CHRIS WOLFF, REALTOR®
CWolff@TomSmithLand.com
601.990.5070 office | 601.757.7968 cell



TomSmithLandandHomes.com

Information is believed to be accurate but not guaranteed.



2011-2020
FRANCHISE
500
BEST
BROKERAGES

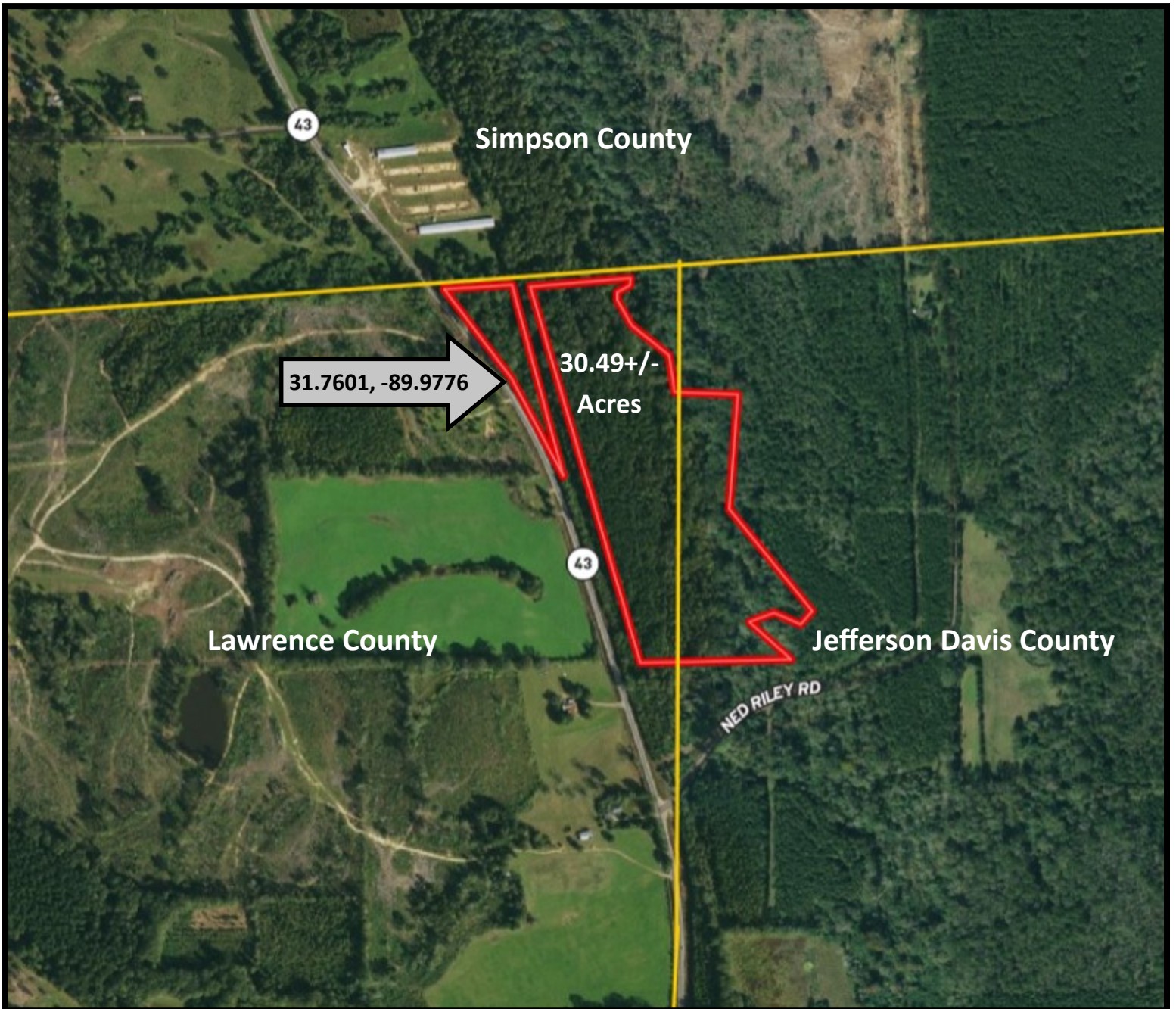
Call me today!

CHRIS WOLFF, REALTOR®
CWolff@TomSmithLand.com
601.990.5070 office | 601.757.7968 cell



TomSmithLandandHomes.com

Information is believed to be accurate but not guaranteed.



Aerial Map



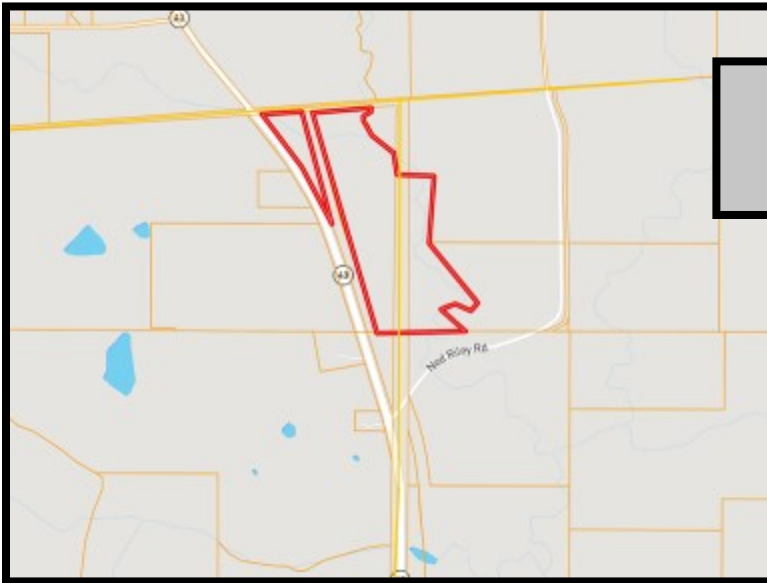
Call me today!

CHRIS WOLFE, REALTOR®
CWolff@TomSmithLand.com
601.990.5070 office | 601.757.7968 cell



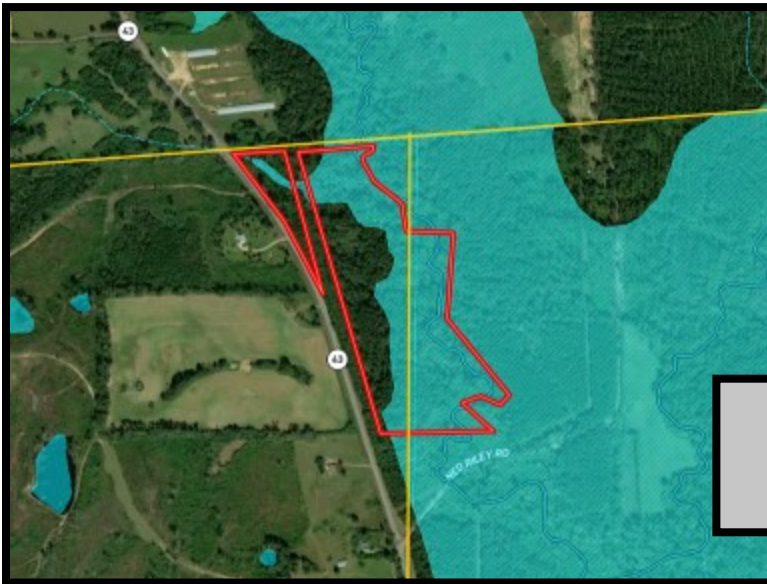
TomSmithLandandHomes.com

Information is believed to be accurate but not guaranteed.



Ownership Map

Topography Map



FEMA Flood Map



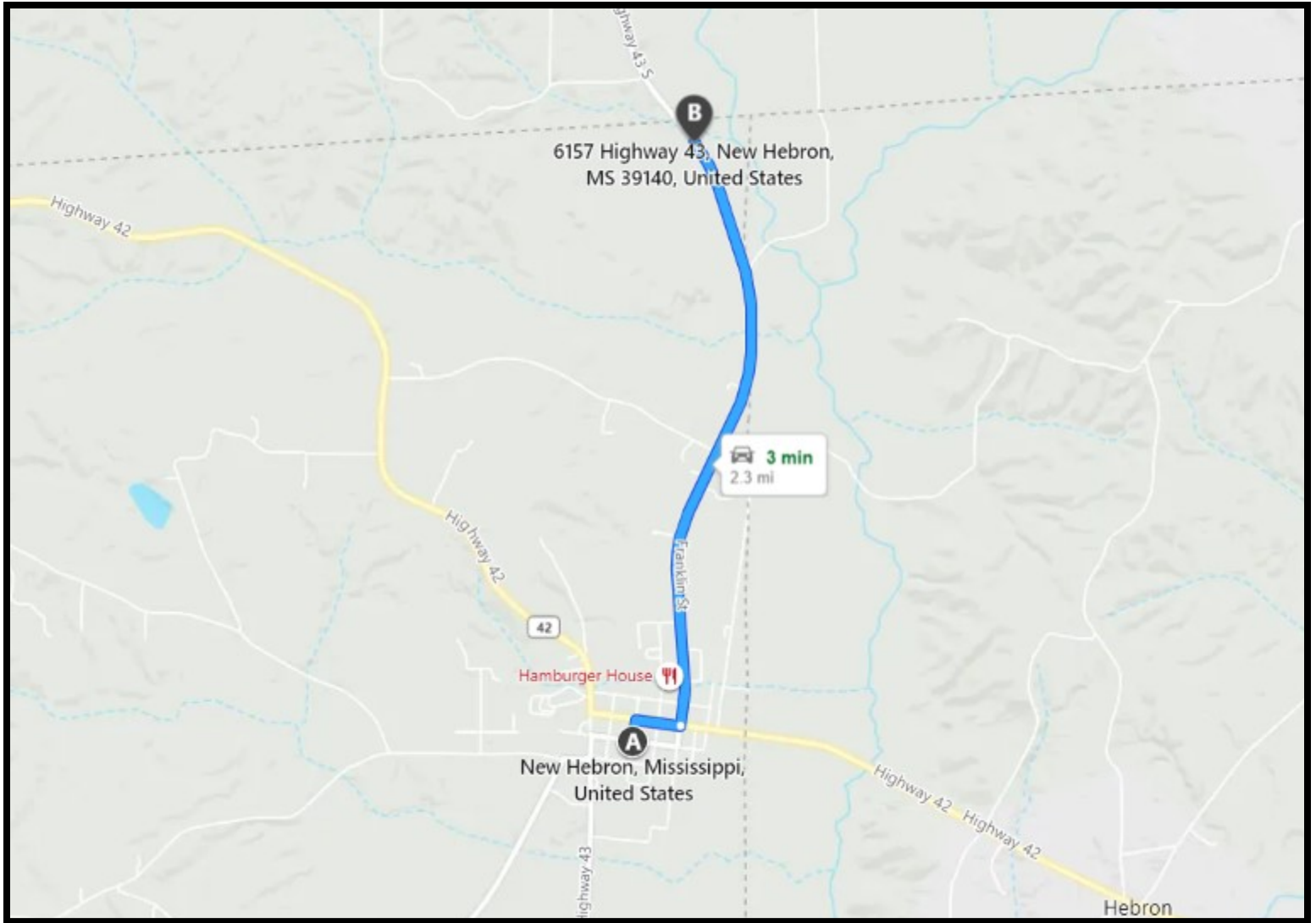
Call me today!

CHRIS WOLFF, REALTOR®
CWolff@TomSmithLand.com
601.990.5070 office | 601.757.7968 cell



TomSmithLandandHomes.com

Information is believed to be accurate but not guaranteed.



Directional Map

Directions from New Hebron, MS: Travel north on Highway 43 from for 2.1 miles. The property will be on your right just before the Simpson County line.

Click [HERE](#) for Bing Maps



Call me today!

CHRIS WOLFF, REALTOR®
CWolff@TomSmithLand.com
601.990.5070 office | 601.757.7968 cell



TomSmithLandandHomes.com

Information is believed to be accurate but not guaranteed.