

Easy Living in Inverness Sunflower County, MS



1004 Old Highway 49 Inverness, MS 38753

This three bedroom, two bath, 1,479+/- square foot Sunflower County, MS home is located in the close knit community of Inverness! Old Highway 49 runs straight through this quiet little town and is convenient to Moorhead, Indianola, Belzoni and Greenwood. An updated kitchen and bathrooms, recessed lighting, granite counter tops, walk in closet, hardwood floors, and a large screened in porch are just a few features of this desirable property. The home is situated on a 70 x 200 lot (.32+/- acres) and would make a great rental property. Come claim your spot in the most fertile soil in the USA! Call Emerson today for a private showing.

Directions from the Intersection of Hwy 49 and Hwy 82 in Indianola, MS: Travel south on Hwy 49 for approximately 7.5 miles. Turn right towards Old Hwy 49 and in 0.4 miles the destination will be on the left.



call me today!

EMERSON LOVELACE, REALTOR®
Emerson@TomSmithLand.com
662.441.2500 office | 601.715.3302 cell



TomSmithLandandHomes.com

Information is believed to be accurate but not guaranteed.



EMERSON LOVELACE, REALTOR®
 Emerson@TomSmithLand.com
 662.441.2500 office | 601.715.3302 cell



TomSmithLandandHomes.com

Information is believed to be accurate but not guaranteed.



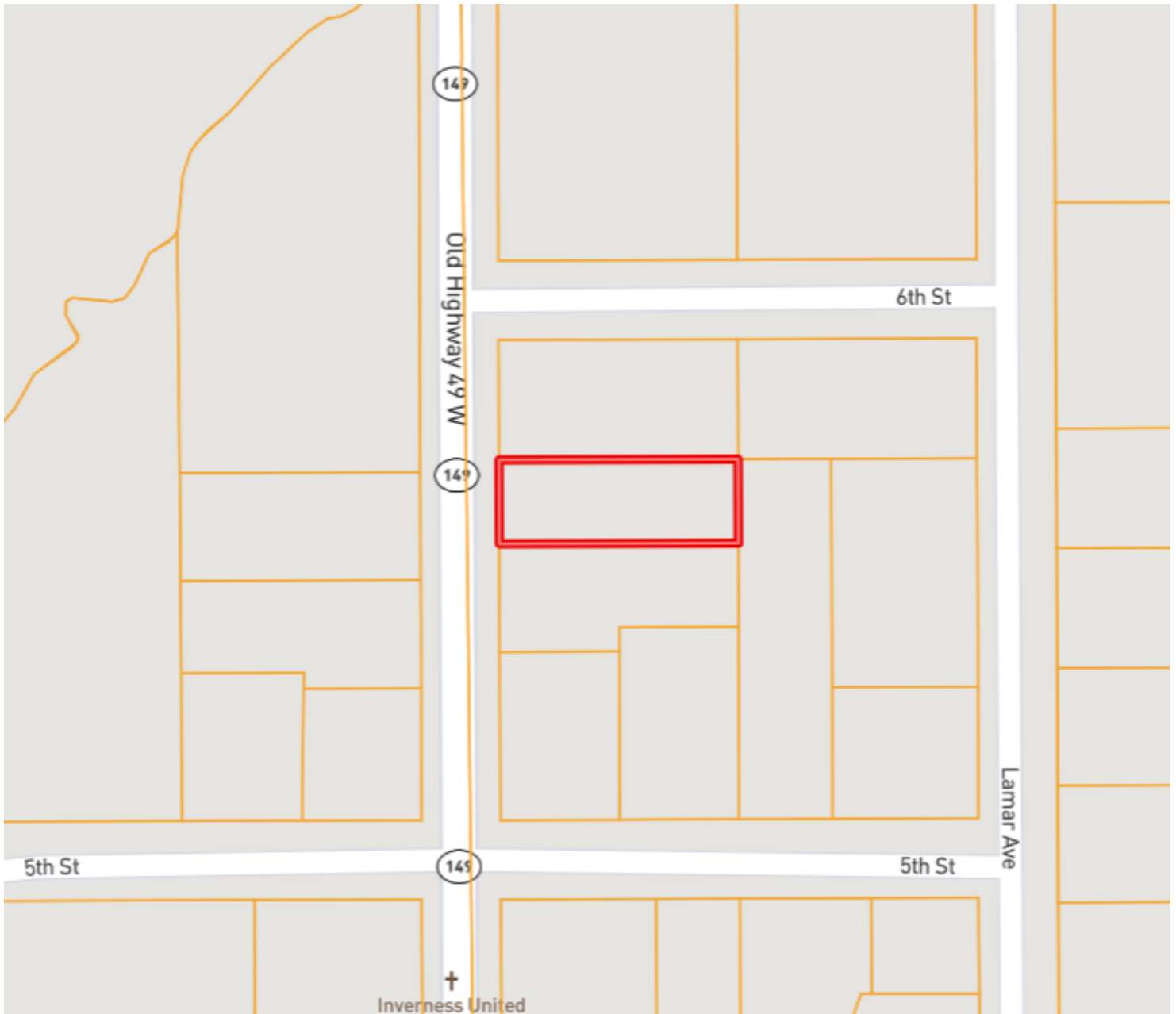
EMERSON LOVELACE, REALTOR®
 Emerson@TomSmithLand.com
 662.441.2500 office | 601.715.3302 cell



TomSmithLandandHomes.com

Information is believed to be accurate but not guaranteed.

OWNERSHIP MAP



EMERSON LOVELACE, REALTOR®
Emerson@TomSmithLand.com
662.441.2500 office | 601.715.3302 cell



TomSmithLandandHomes.com

Information is believed to be accurate but not guaranteed.

AERIAL MAP



[Click for Interactive Map](#)



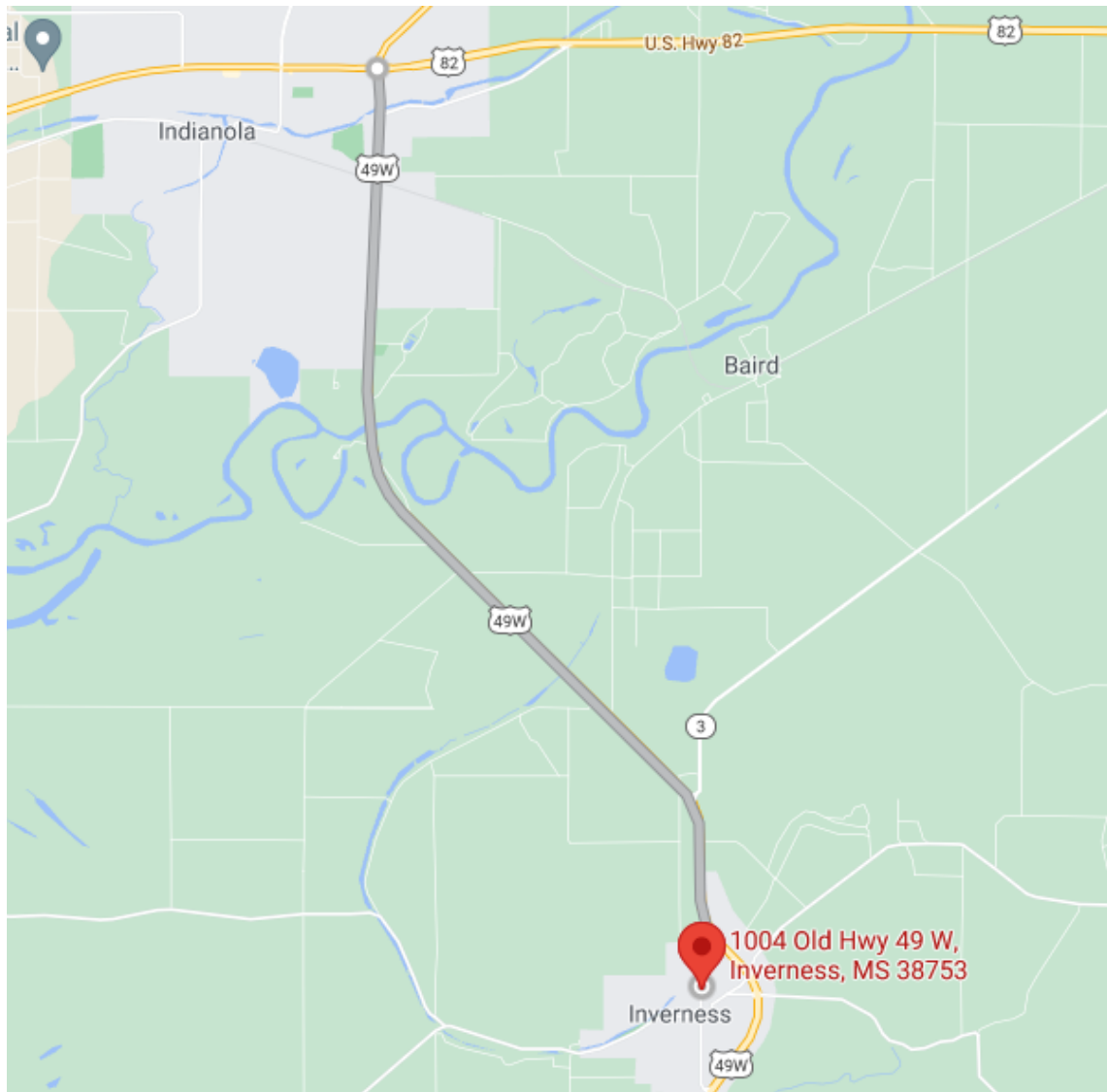
EMERSON LOVELACE, REALTOR®
Emerson@TomSmithLand.com
662.441.2500 office | 601.715.3302 cell



TomSmithLandandHomes.com

Information is believed to be accurate but not guaranteed.

DIRECTIONAL MAP



1004 Old Hwy 49 Inverness, MS 38753

Directions from the Intersection of Hwy 49 and Hwy 82 in Indianola, MS: Travel south on Hwy 49 for approximately 7.5 miles. Turn right towards Old Hwy 49 and in 0.4 miles the destination will be on the left. [Click for directions](#)



EMERSON LOVELACE, REALTOR®
Emerson@TomSmithLand.com
662.441.2500 **office** | 601.715.3302 **cell**



TomSmithLandandHomes.com

Information is believed to be accurate but not guaranteed.