

13.38+/- Acres of Rolling Hills and Mature Timber Smith County, MS



\$39,750

Looking for the perfect small acreage tract to build a dream home or weekend get-away? This 13.38+/- acres Smith County, MS property offers rolling hills with mature timber, shed, cleared home or camp sites, and road frontage on Mineral Springs Road. Utilities are available. The property is located in the Smith County School District, about an hour away from Jackson and Hattiesburg and just under three hours from New Orleans, LA. Don't miss out on this great opportunity at a small acreage tract! Call Blake today to schedule a viewing!

Directions from MS-37 S in Raleigh, MS: Turn left onto SC Rd 82/Mineral Springs Road. Travel 1.1miles and the property will be on the left.



Call me today!

BLAKE SASSER, REALTOR®
Blake@TomSmithLand.com
601.990.5070 office | 601-757-5027 cell



TomSmithLandandHomes.com



BLAKE SASSER, REALTOR®
Blake@TomSmithLand.com
601.990.5070 office | 601-757-5027 cell



Expect More. Get More.

TomSmithLandandHomes.com



Aerial Map

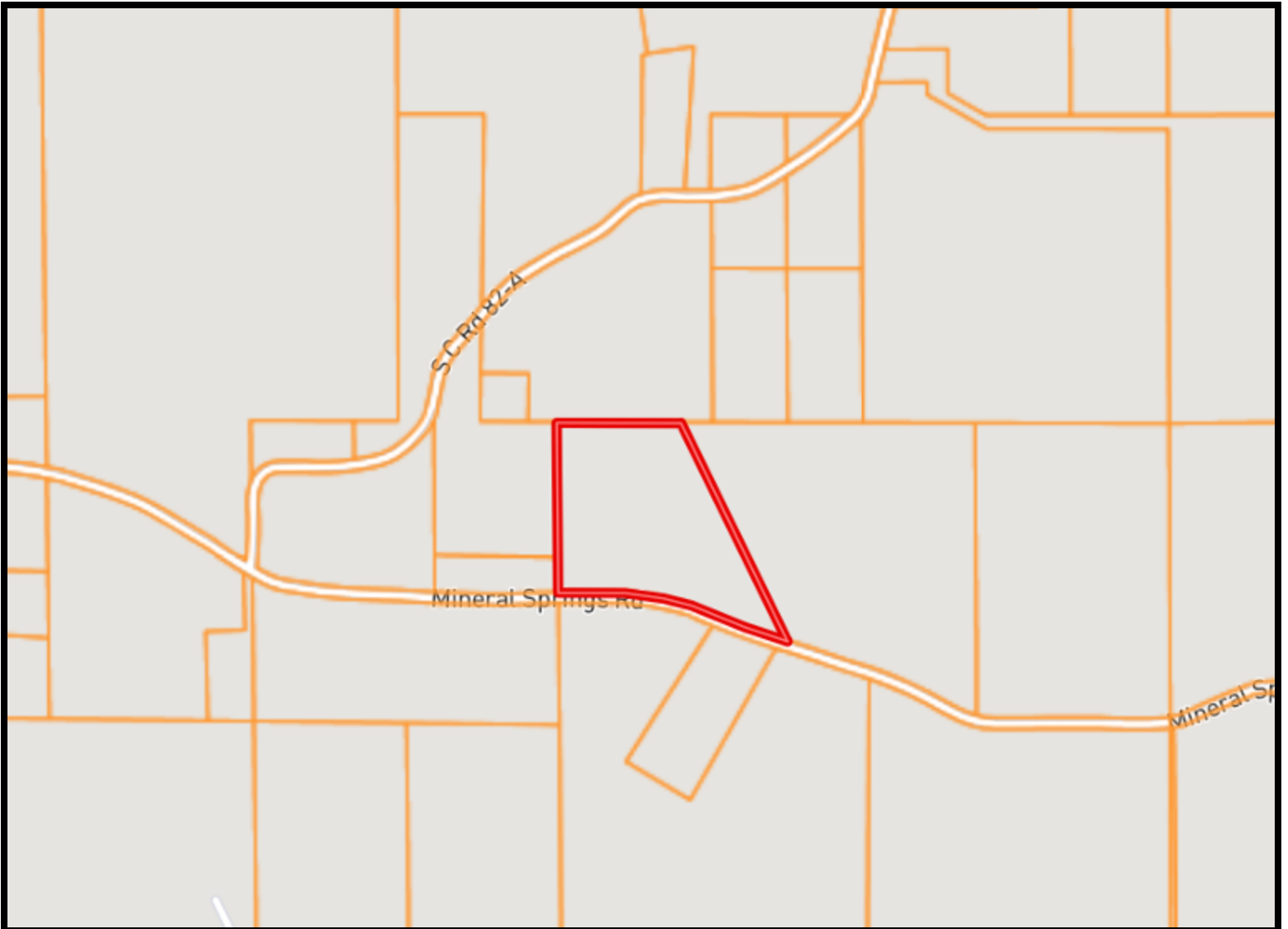


BLAKE SASSER, REALTOR®
Blake@TomSmithLand.com
601.990.5070 office | 601-757-5027 cell



Expect More. Get More.

TomSmithLandandHomes.com



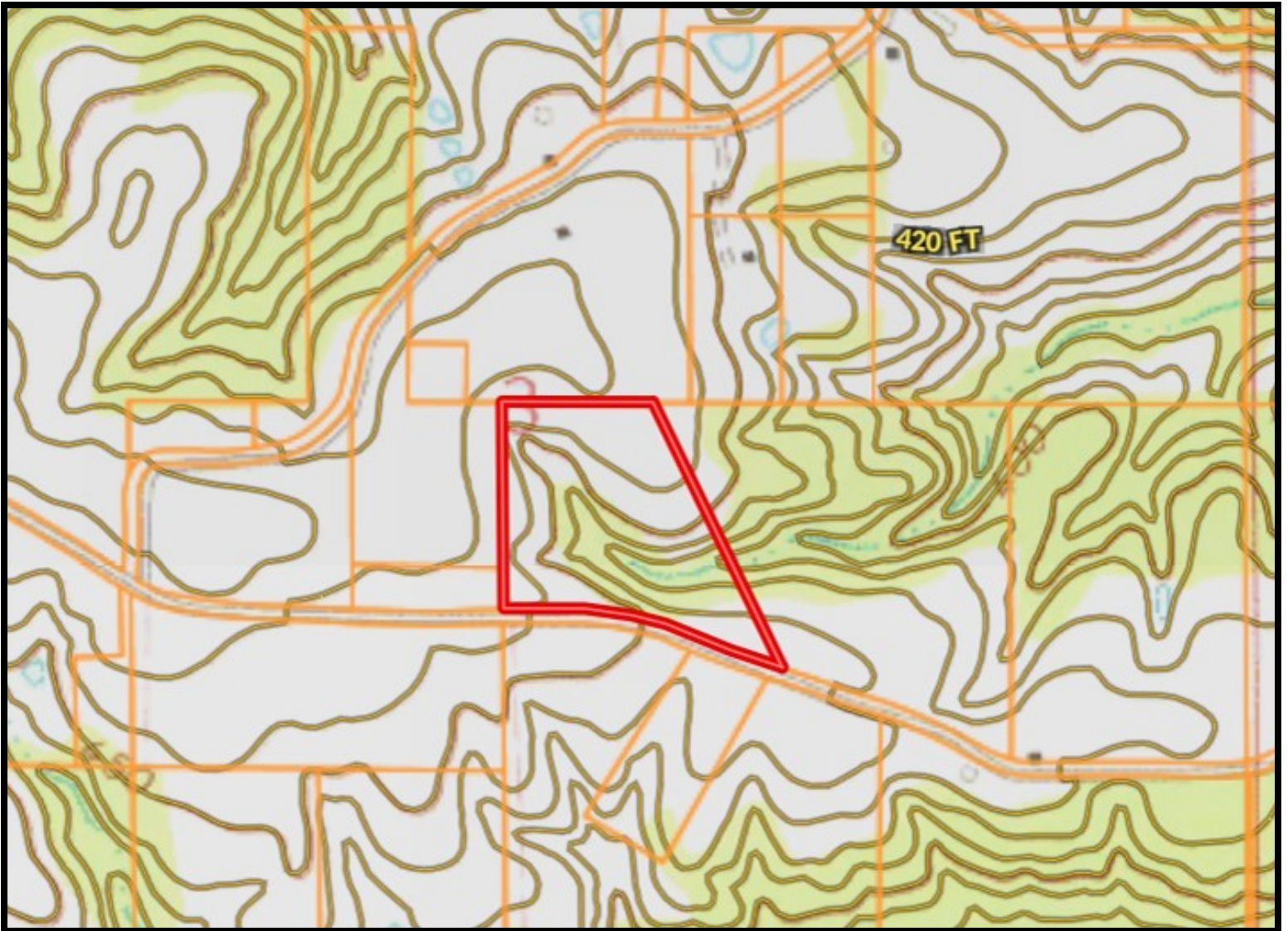
Ownership Map



BLAKE SASSER, REALTOR®
Blake@TomSmithLand.com
601.990.5070 office | 601-757-5027 cell



TomSmithLandandHomes.com



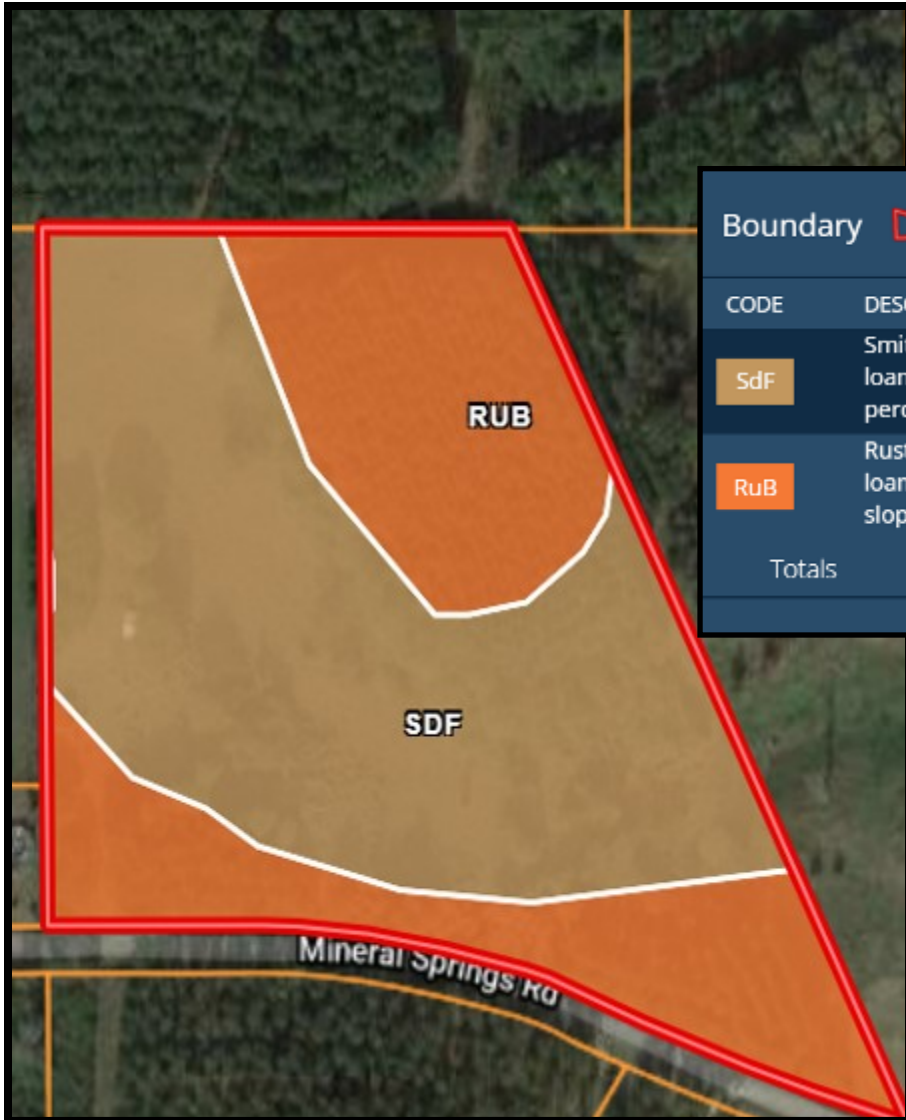
Topography Map



BLAKE SASSER, REALTOR®
Blake@TomSmithLand.com
601.990.5070 office | 601-757-5027 cell



TomSmithLandandHomes.com



Boundary		13.6 ac		
CODE	DESCRIPTION	ACRES	%	CAP ?
SdF	Smithdale fine sandy loam, 15 to 35 percent slopes	7.9	57.9%	7e ?
RuB	Ruston fine sandy loam, 2 to 5 percent slopes	5.7	42.1%	2e ?
Totals		13.6 Ac	4.9 Cap. Average	

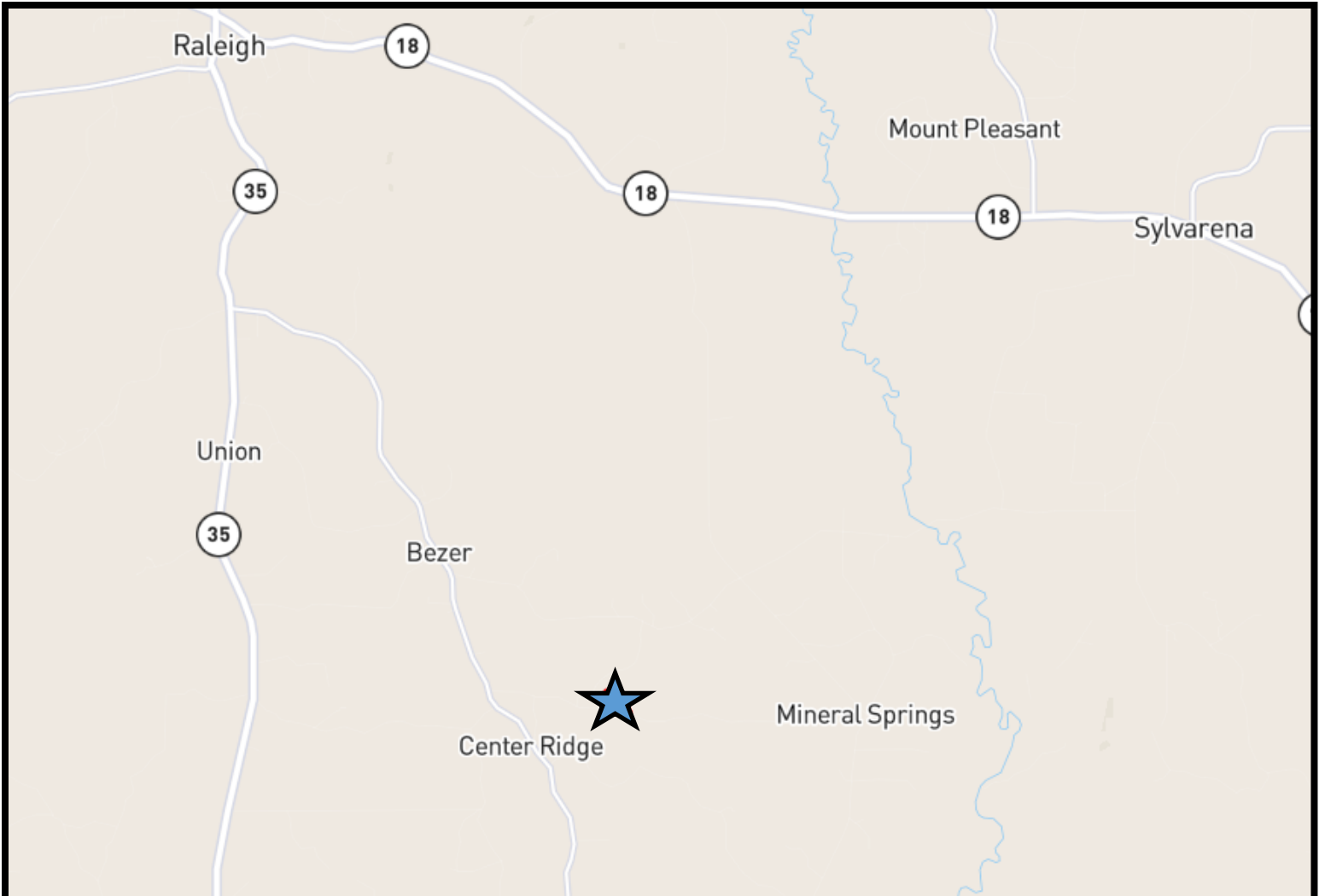
Soil Report



BLAKE SASSER, REALTOR®
 Blake@TomSmithLand.com
 601.990.5070 office | 601-757-5027 cell



TomSmithLandandHomes.com



Directional Map

Directions from MS-37 S in Raleigh, MS: Turn left onto SC Rd 82/Mineral Springs Road. Travel 1.1 miles and the property will be on the left.



BLAKE SASSER, REALTOR®
Blake@TomSmithLand.com
601.990.5070 office | 601-757-5027 cell



TomSmithLandandHomes.com