

3 Lots Marshall County, MS



Take your pick of Lot 1, 2 or 3. These Marshall County, MS lots are located just off Hwy 178 on Waites Road between Holly Springs and Lake Center with easy access to I-22. The access road has been improved. Zoning permits mobile homes. Lot 1 is 3.93+/- acres, Lot 2 is 3.93+/- acres, and Lot 3 is 3.97+/- acres. Call Tom today!!

Directions: From the Holly Springs, MS square take Van Dorn Avenue/Hwy 178 east five miles to Waites Road. Turn left and drive ¼ mile to driveway on the left.



call me today!

TOM WISEMAN, MANAGING BROKER
TWiseman@TomSmithLand.com
662.317.0467



TomSmithLandandHomes.com

Information is believed to be accurate but not guaranteed.

AERIAL MAP



TOM WISEMAN, MANAGING BROKER
TWiseman@TomSmithLand.com
662.317.0467

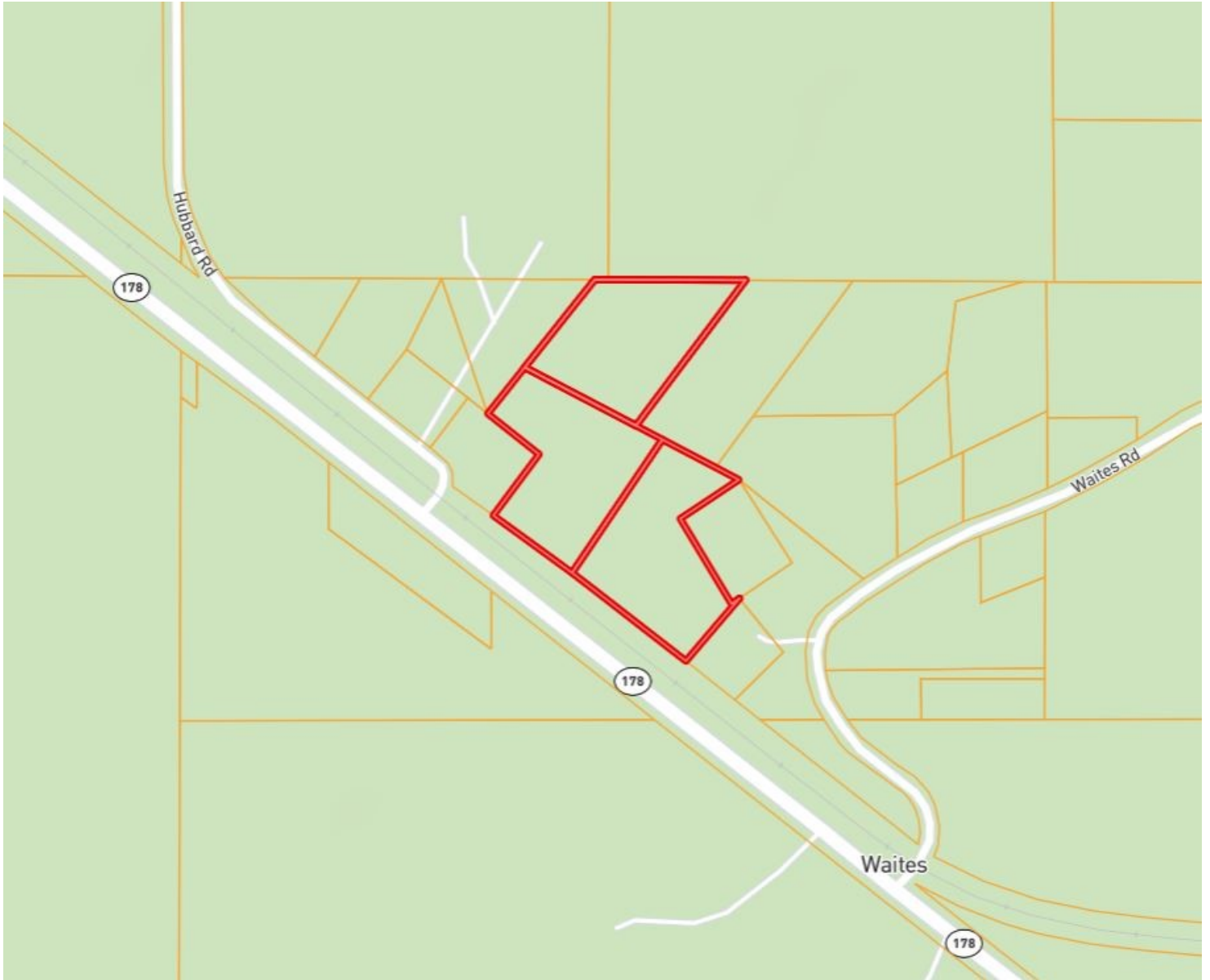


Expect More. Get More.

TomSmithLandandHomes.com

Information is believed to be accurate but not guaranteed.

PROPERTY MAP



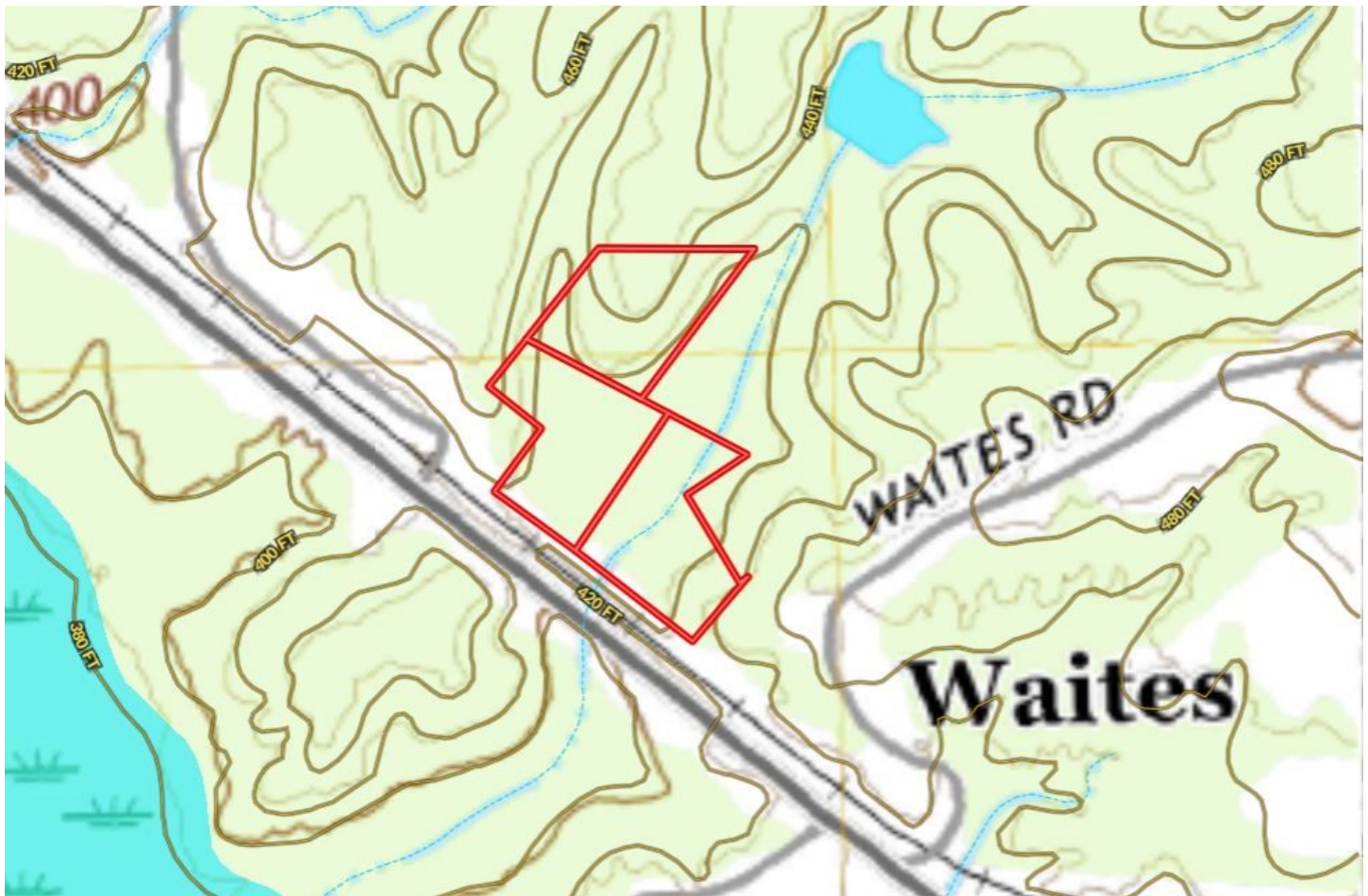
TOM WISEMAN, MANAGING BROKER
TWiseman@TomSmithLand.com
662.317.0467



TomSmithLandandHomes.com

Information is believed to be accurate but not guaranteed.

TOPO MAP



TOM WISEMAN, MANAGING BROKER
TWiseman@TomSmithLand.com
662.317.0467

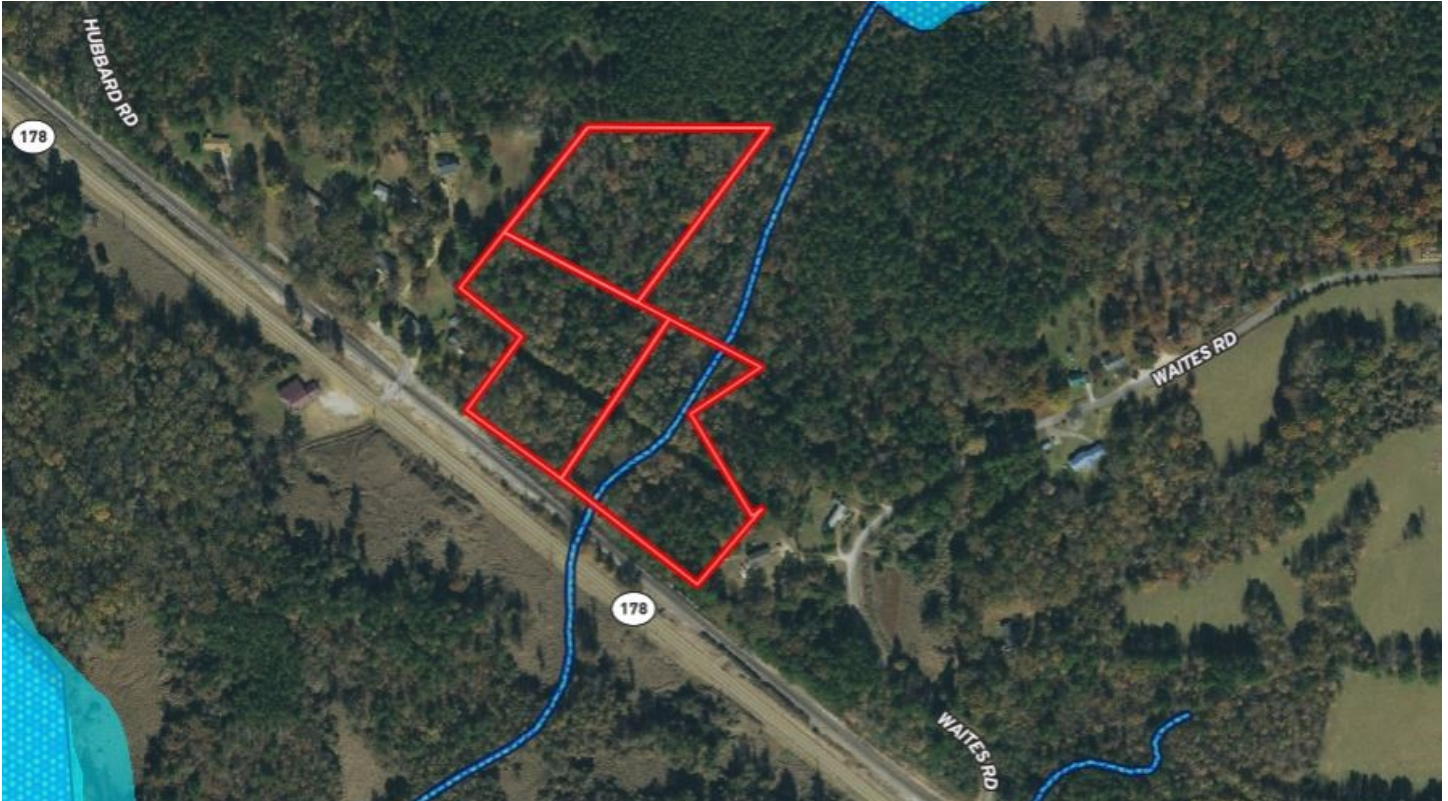


Expect More. Get More.

TomSmithLandandHomes.com

Information is believed to be accurate but not guaranteed.

FLOOD MAP



TOM WISEMAN, MANAGING BROKER
TWiseman@TomSmithLand.com
662.317.0467

101 Main Street West | New Albany, MS 38652



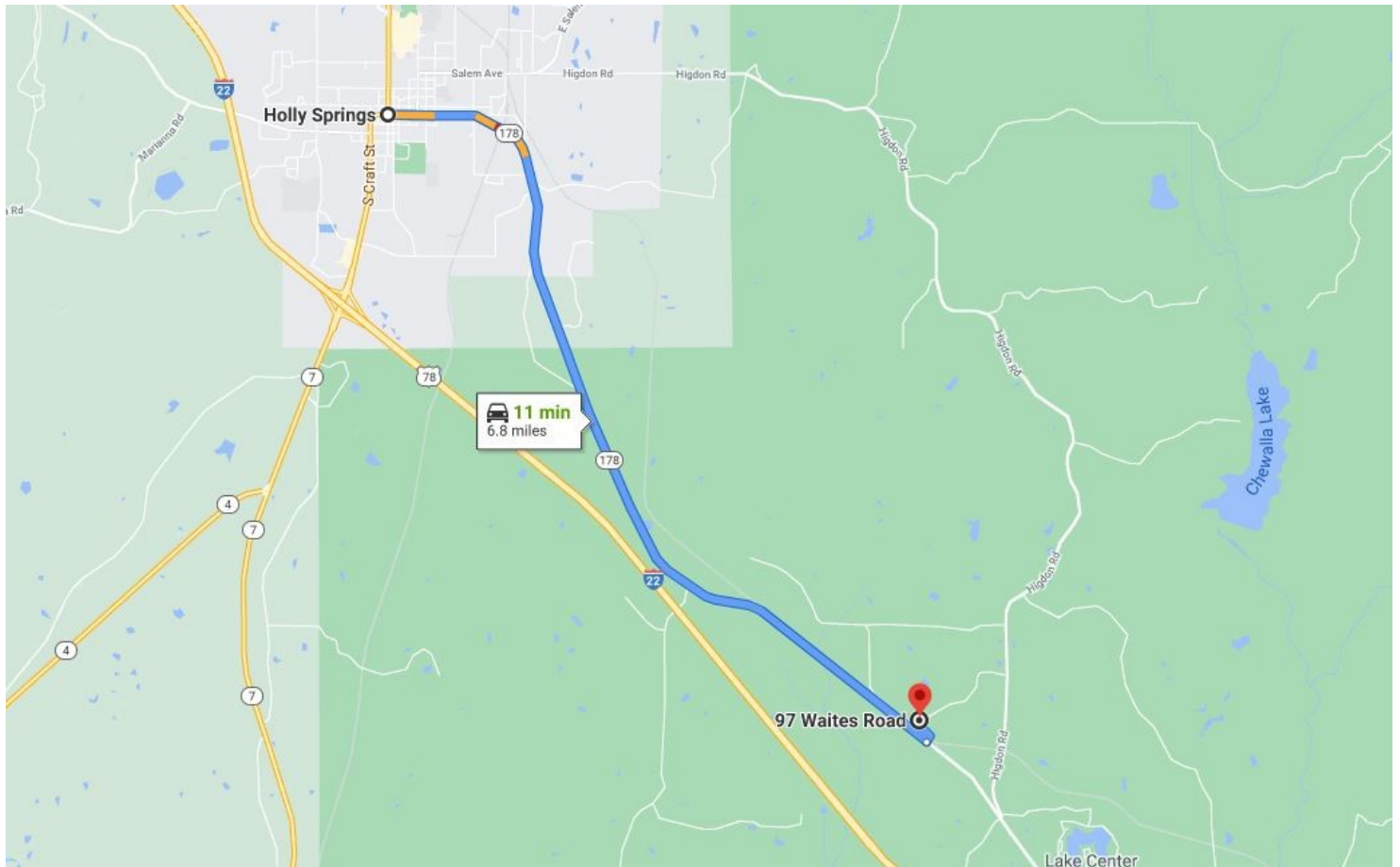
Expect More. Get More.



TomSmithLandandHomes.com

Information is believed to be accurate but not guaranteed.

DIRECTIONAL MAP



Directions: From the Holly Springs, MS square take Van Dorn Avenue/Hwy 178 east five miles to Waites Road. Turn left and drive ¼ mile to driveway on the left.



TOM WISEMAN, MANAGING BROKER
TWiseman@TomSmithLand.com
662.317.0467



TomSmithLandandHomes.com

Information is believed to be accurate but not guaranteed.