

# 30+/- Acres with Camp in Jefferson Davis County, MS



**\$159,900**

Check out this ready to hunt 30+/- acre property in Jefferson Davis County, just minutes south of Prentiss, MS. Imagine summertime fishing in Jaybird Creek, just one of the year-round creeks on this tract. This fantastic property also boasts some of the best deer and turkey hunting you will find anywhere around. The internal road system provides easy access to the entire property, while the preset box blinds are just a short walk from the camp. The whole property is a hardwood bottom, full of multiple species of mast producing trees. The 3-bedroom, 2 bath mobile home was purchased new in 2008 and checks all the boxes for a recreational property or forever home. The property also features a bunkhouse and 40 ft. conex for equipment storage. Call Clif Cannon to schedule a tour of this great recreational property.

From the intersection of US-84 and MS-13 in Prentiss, MS: Travel south on MS-13 for 1.3 miles. Turn left onto J.E. Johnson Rd and travel for .3 miles. Turn left onto E. St. Stephens Rd and travel for 2.1 miles. The property will be on the left. Address: 461 E. St. Stephens Rd, Prentiss, MS 39474



*call me today!*

**CLIF CANNON, REALTOR®**  
Clif@TomSmithLand.com  
601.990.5070 office | 601.565.1070 cell



**TomSmithLandandHomes.com**

Information is believed to be accurate but not guaranteed.





**CLIF CANNON**, REALTOR®

Clif@TomSmithLand.com

601.990.5070 office | 601.565.1070 cell



Expect More. Get More.

**TomSmithLandandHomes.com**

Information is believed to be accurate but not guaranteed.





**CLIF CANNON, REALTOR®**

[Clif@TomSmithLand.com](mailto:Clif@TomSmithLand.com)

601.990.5070 office | 601.565.1070 cell



Expect More. Get More.

**TomSmithLandandHomes.com**

Information is believed to be accurate but not guaranteed.





**CLIF CANNON**, REALTOR®  
Clif@TomSmithLand.com  
601.990.5070 office | 601.565.1070 cell

**SMITH**  
**LAND AND**  
**HOMES**  
Expect More. Get More.

**TomSmithLandandHomes.com**

Information is believed to be accurate but not guaranteed.



Aerial Map



**CLIF CANNON**, REALTOR®  
Clif@TomSmithLand.com  
601.990.5070 office | 601.565.1070 cell

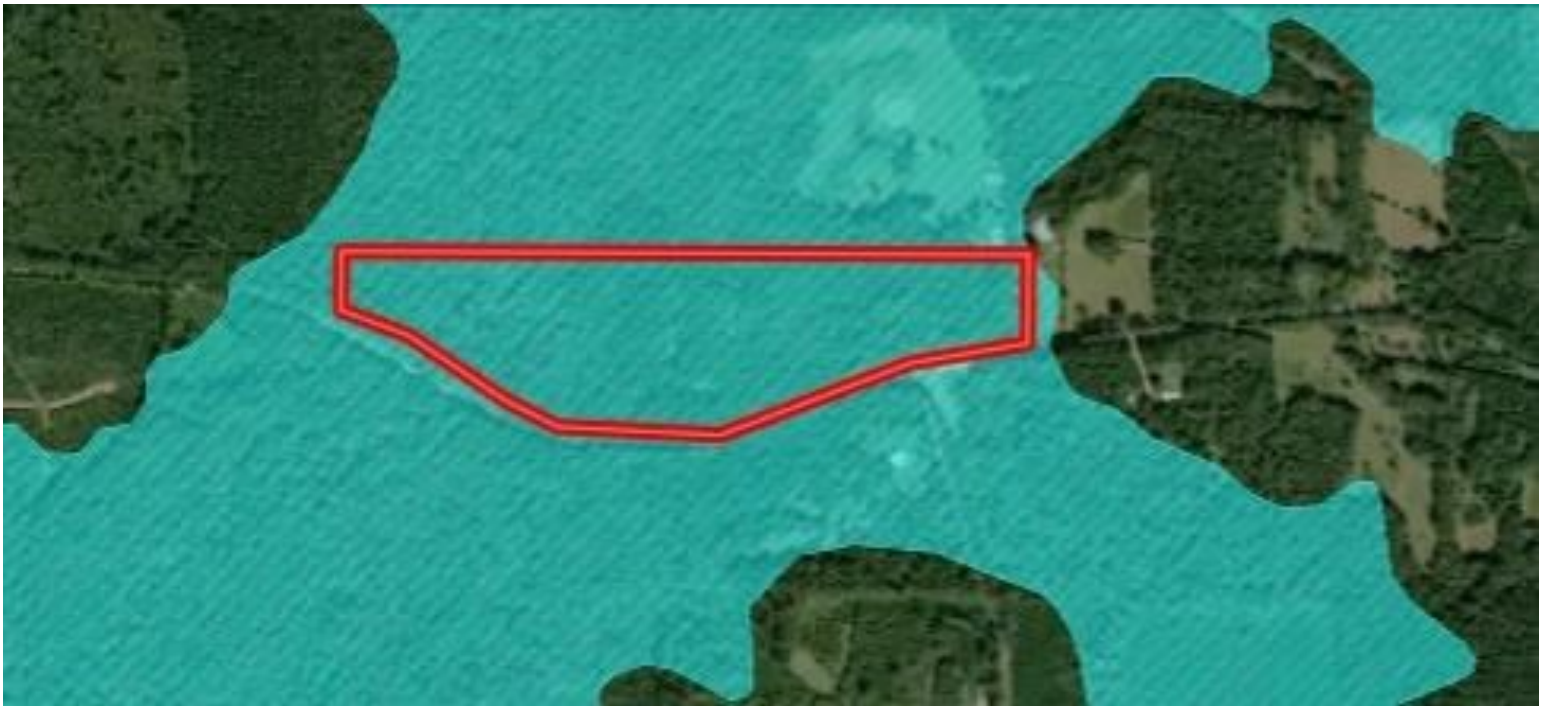


**TomSmithLandandHomes.com**

Information is believed to be accurate but not guaranteed.



# Flood Map



# Topographic Map

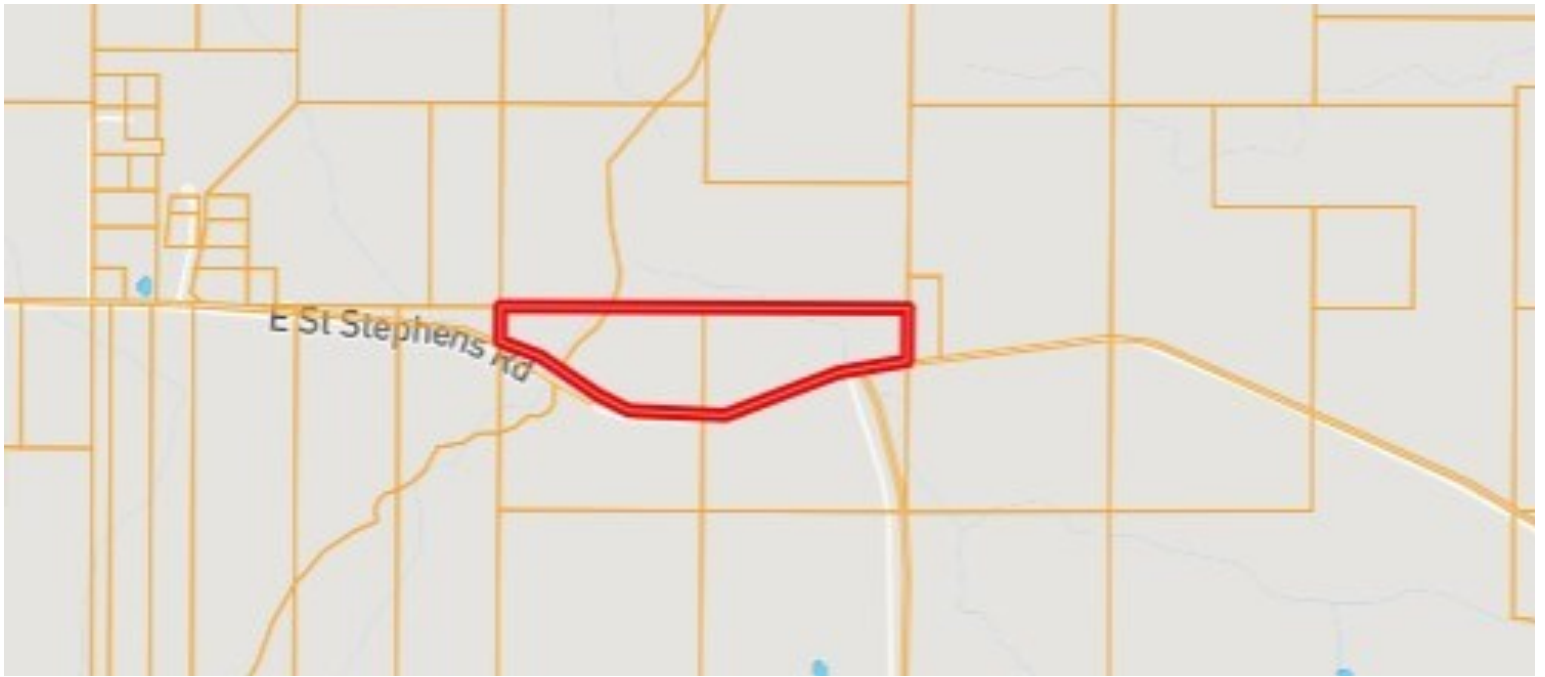


**CLIF CANNON**, REALTOR®  
Clif@TomSmithLand.com  
601.990.5070 office | 601.565.1070 cell



**TomSmithLandandHomes.com**

Information is believed to be accurate but not guaranteed.



## Ownership Map



**CLIF CANNON**, REALTOR®  
Clif@TomSmithLand.com  
601.990.5070 office | 601.565.1070 cell



**TomSmithLandandHomes.com**

Information is believed to be accurate but not guaranteed.

# Directional Map



From the intersection of US-84 and MS-13 in Prentiss, MS: Travel south on MS-13 for 1.3 miles. Turn left onto J.E. Johnson Rd and travel for .3 miles. Turn left onto E. St. Stephens Rd and travel for 2.1 miles. The property will be on the left. Address: 461 E. St. Stephens Rd Prentiss, MS 39474



**CLIF CANNON, REALTOR®**  
Clif@TomSmithLand.com  
601.990.5070 office | 601.565.1070 cell



**TomSmithLandandHomes.com**

Information is believed to be accurate but not guaranteed.