

19.5+-Acres Recreational Property in Marion County, MS



\$75,000

Look at this 19.5 +/- acre recreational or homesite property. Featuring road frontage on New Hope Church Road in the Foxworth Community of Marion County, MS, this tract features rolling terrain with a large area that is suitable for building. The one acre pond is fed year-round by a small creek and surrounded by mature hardwoods offering outdoor recreational opportunities in summer and winter. Utilities are available at the road. Located just minutes from Columbia, MS, this is an excellent property for investment, recreation, or a forever home. Call Clif Cannon to schedule a private viewing.

Directions from the intersection of US-98 and MS-44 in Columbia, MS: Travel west on US-98 for 4.7 miles. Turn left onto New Hope Church Rd and travel for 3.5 miles. The property will be on the right.



call me today!

CLIF CANNON, REALTOR®
Clif@TomSmithLand.com
601.990.5070 office | 601.565.1070 cell



TomSmithLandandHomes.com

Information is believed to be accurate but not guaranteed.



CLIF CANNON, REALTOR®
 Clif@TomSmithLand.com
 601.990.5070 office | 601.565.1070 cell



TomSmithLandandHomes.com

Information is believed to be accurate but not guaranteed.

Aerial Map



Ownership Map



CLIF CANNON, REALTOR®

Clif@TomSmithLand.com

601.990.5070 office | 601.565.1070 cell



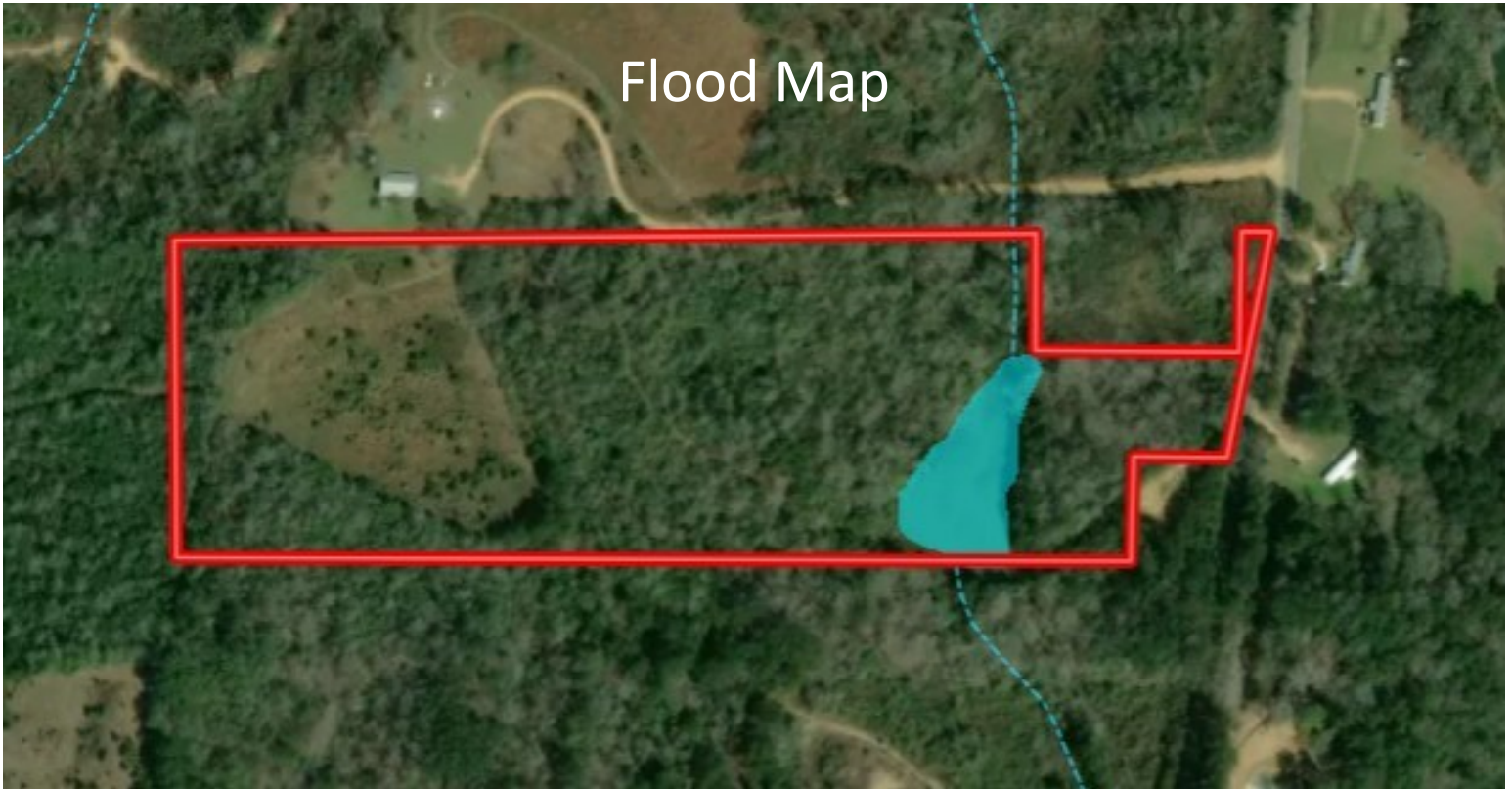
Expect More. Get More.



TomSmithLandandHomes.com

Information is believed to be accurate but not guaranteed.

Flood Map



Topographic Map

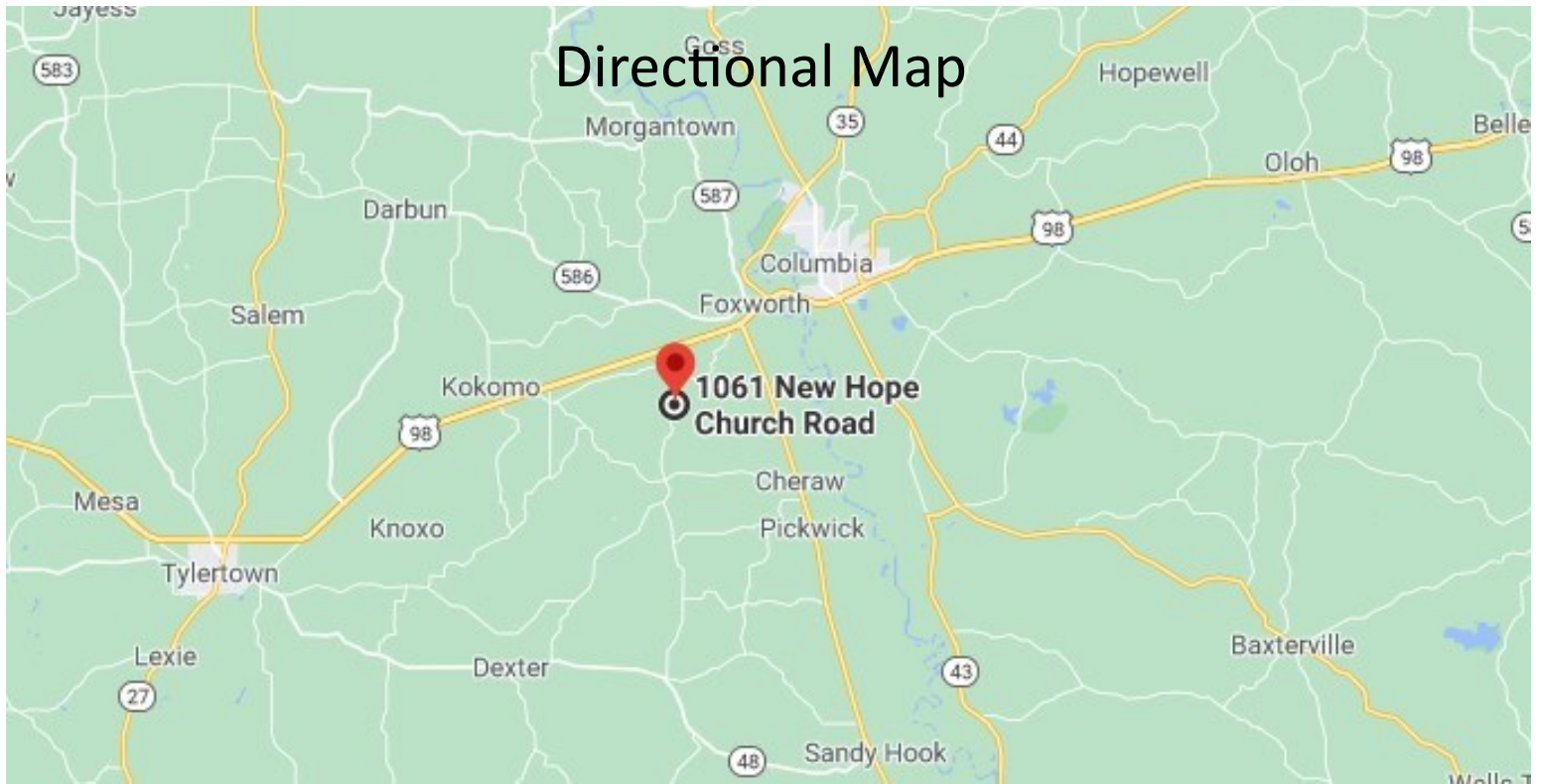


CLIF CANNON, REALTOR®
Clif@TomSmithLand.com
601.990.5070 office | 601.565.1070 cell



TomSmithLandandHomes.com

Information is believed to be accurate but not guaranteed.



Directional Map

Directions from the intersection of US-98 and MS-44 in Columbia, MS: Travel west on US-98 for 4.7 miles. Turn left onto New Hope Church Rd and travel for 3.5 miles. The property will be on the right.



CLIF CANNON, REALTOR®
Clif@TomSmithLand.com
601.990.5070 office | 601.565.1070 cell



TomSmithLandandHomes.com

Information is believed to be accurate but not guaranteed.