

Camp on 20+/- Acres in Marion County, MS



\$68,000

Take a look at this 20 +/- acre recreational property with a 16x80 camp ready for your recreational enjoyment. Featuring road frontage on New Hope Church Road in the Foxworth Community of Marion County, MS, this tract consists rolling terrain with a large area that is suitable for a forever home or large food plot. The one acre pond is fed year-round by a small creek and surrounded by mature hardwoods offering outdoor recreational opportunities in summer and winter. Utilities are available at the road. Located just minutes from Columbia, MS, this is an excellent property for investment, recreation, or a forever home. Call Clif Cannon to schedule a private viewing.

Directions from the intersection of US-98 and MS-44 in Columbia, MS: Travel west on US-98 for 4.7 miles. Turn left onto New Hope Church Rd and travel for 3.5 miles. The property will be on the right.



call me today!

CLIF CANNON, REALTOR®

Clif@TomSmithLand.com

601.990.5070 office | 601.565.1070 cell



2011-2020
BEST
BROKERAGES

TomSmithLandandHomes.com

Information is believed to be accurate but not guaranteed.



CLIF CANNON, REALTOR®
 Clif@TomSmithLand.com
 601.990.5070 office | 601.565.1070 cell



TomSmithLandandHomes.com

Information is believed to be accurate but not guaranteed.

Aerial Map



19.5+/- Acres

31.1901, -89.9076

Ownership Map



CLIF CANNON, REALTOR®

Clif@TomSmithLand.com

601.990.5070 office | 601.565.1070 cell

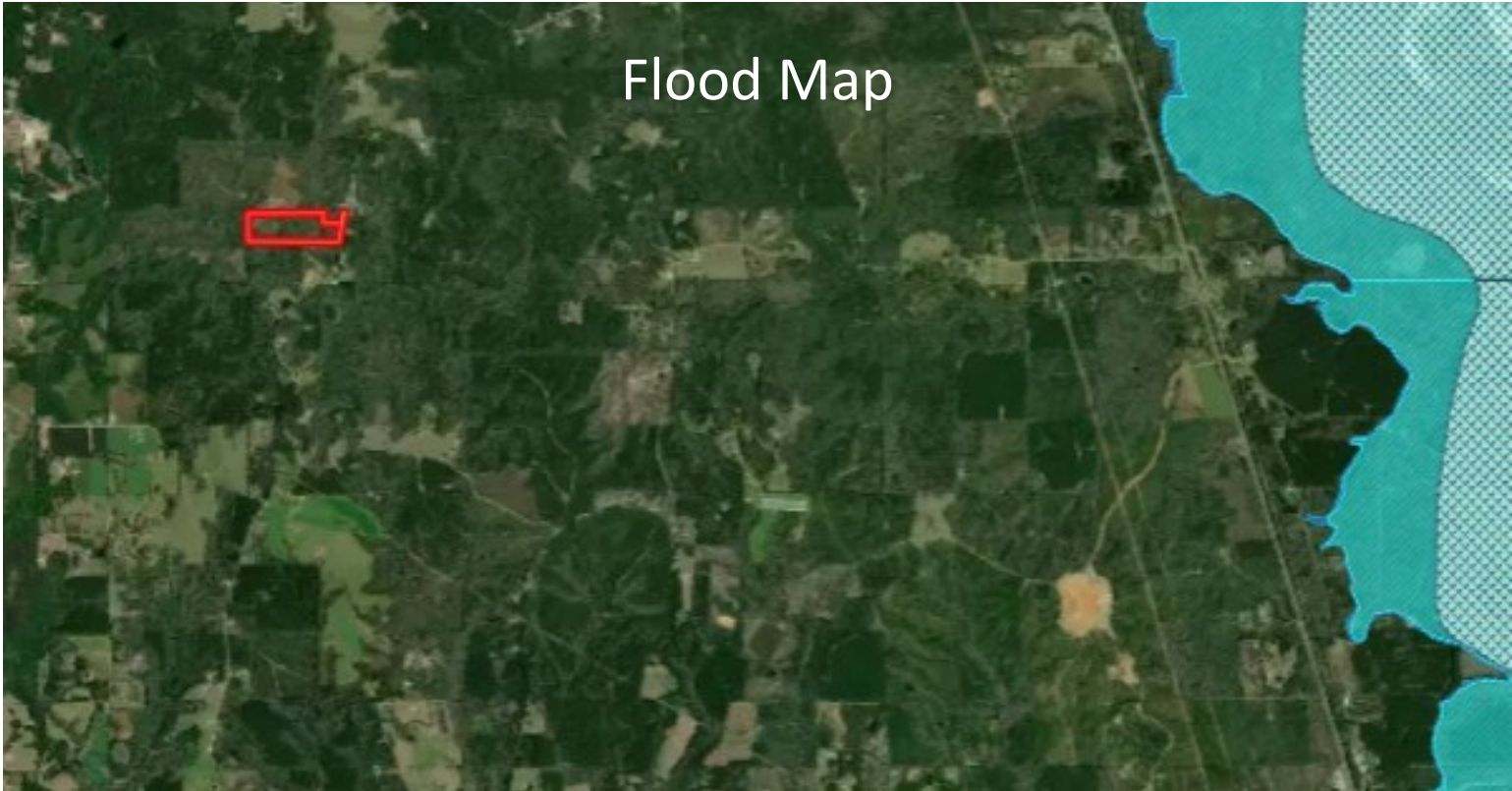
Expect More. Get More.



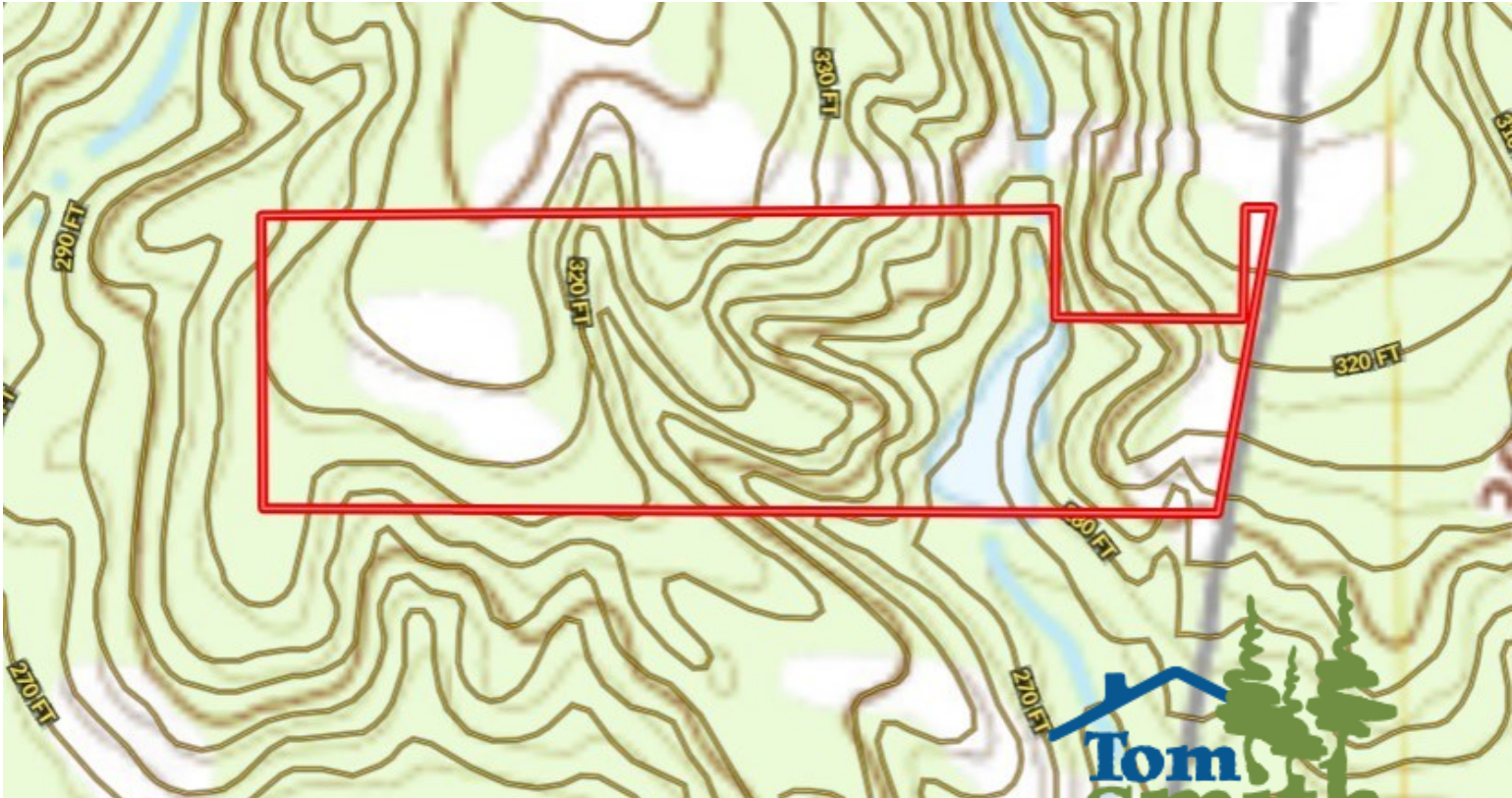
TomSmithLandandHomes.com

Information is believed to be accurate but not guaranteed.

Flood Map



Topographic Map



CLIF CANNON, REALTOR®

Clif@TomSmithLand.com

601.990.5070 office | 601.565.1070 cell

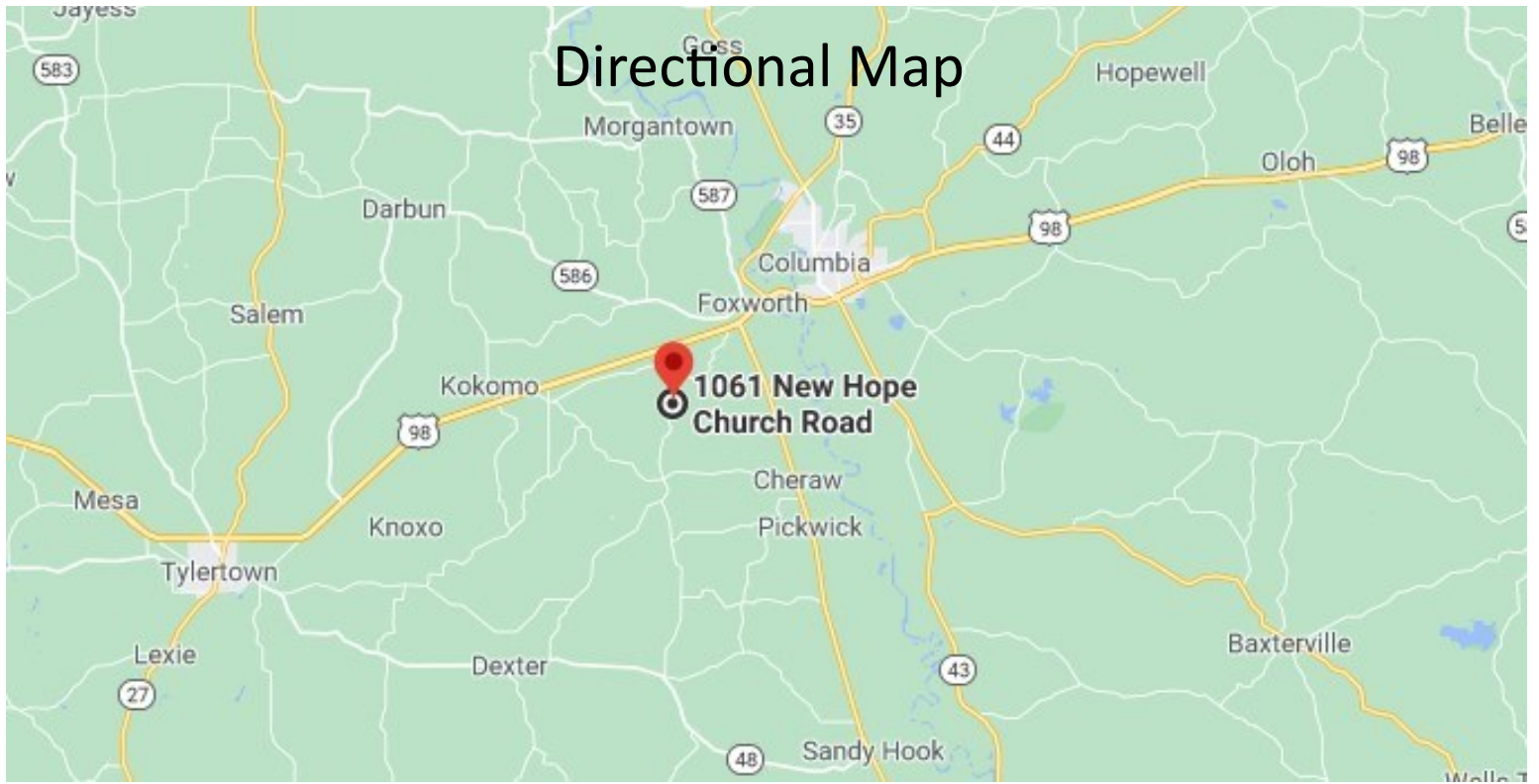


Expect More. Get More.



TomSmithLandandHomes.com

Information is believed to be accurate but not guaranteed.



Directional Map

Directions from the intersection of US-98 and MS-44 in Columbia, MS: Travel west on US-98 for 4.7 miles. Turn left onto New Hope Church Rd and travel for 3.5 miles. The property will be on the right.



CLIF CANNON, REALTOR®
Clif@TomSmithLand.com
601.990.5070 office | 601.565.1070 cell



TomSmithLandandHomes.com

Information is believed to be accurate but not guaranteed.